

Cabin Catalog



The image shows two men in industrial workwear, including yellow hard hats and dark jackets, standing on a white metal balcony or platform. They are looking down at a set of blueprints held by the man on the right. The man on the left is pointing towards the plans. In the background, there is a large industrial building with a glass facade and a clear blue sky.

INTEGRATED PRODUCTION OF ADVANCED EQUIPMENT ASSEMBLY LINE

In terms of product technology, our company has the ISO9001, international SGS, CE and other certifications, and passing the TUV field inspection, product structure safety test, In addition, we have the product invention patents,

FACTORY IMAGE



17 AUTOMATED
PRODUCTION LINES

17⁺

200000+ SQUARE
METERS OF FACTORY

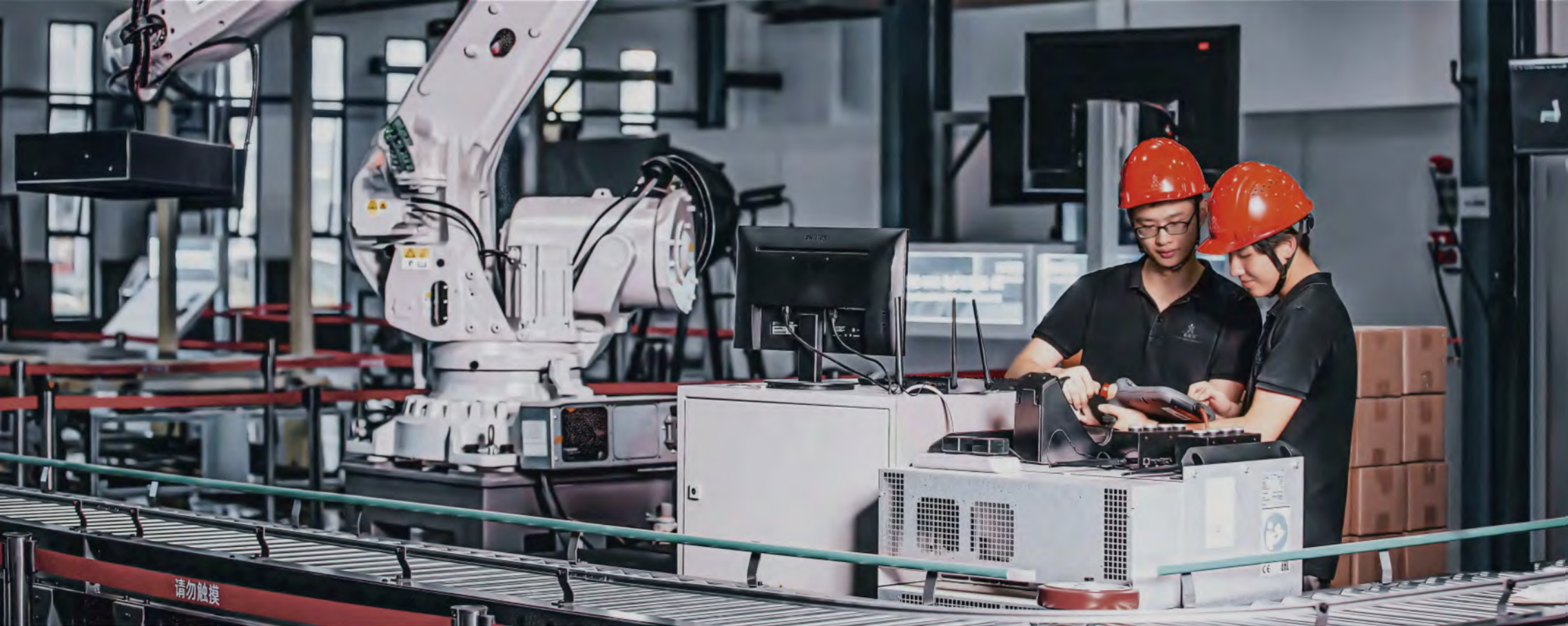
200000⁺

PRODUCE 300+
UNITS PER MONTH

200⁺

3 DAYS FOR SAMPLE PRODUCTION
10 DAYS FOR DELIVERY COMPLETION

3,10^{days}



STRICT STANDARD

01

Strictly control the selection of materials, construction projects, the service indicators are strictly abide by the industry standards, emergency equipment is complete, perfect measures, so that customers are more at ease, more assured.

STRENGTHEN QUALITY INSPECTION

02

Attach importance to quality, strengthen quality inspection, from product development to landing, every step is concerned about quality control, through a number of quality inspections of products, establish a good reputation.

HIGH AND NEW TECHNOLOGY

03

Company has gathered high-tech talents in product research and development, camp planning and consulting, landscape planning, industrial design, interior design, machining and other fields.

PRODUCT STANDARD

1. WIND PRESSURE CAN REACH 9

The outer doors and windows are not damaged under the action of wind pressure when they are normally closed. The high strength columns, beams, walls and other load-bearing constructions further resist the impact of wind pressure and vibration.

2. ANTI-CORROSION AND ANTI-INSECT

The external aluminum alloy material has great corrosion resistance. The material has been specially treated, with good airtightness, mosquito, insect and termite proof, and the service life is up to 50 years.

3. FIRE AND WATERPROOF

The wall is made of waterproof coil and waterproof material, and the watertight performance can reach level 6 strong wind and rainstorm. The wall is made of high flame retardant sheet to increase the ability of fire and waterproof.

4. THERMAL INSULATION UP TO 8 LEVELS

Warm in winter, cool in summer, comfortable and energy saving, using a variety of materials of the combination wall, forming a thermal insulation structure system, to solve the dual problem of thermal insulation and heat insulation.

5. SOUND INSULATION PERFORMANCE CAN REACH 45 DB

The double glazing and sound insulation materials are used to meet the national standard "Green Building Evaluation Standard" GB50378, aiming to provide a quiet indoor living environment for residents.

6. ANTI-THEFT AND ANTI-FREEZE

Air tightness up to class 8, steel frame, high-strength aluminum hull, reinforced door lock security, guarantee privacy while enjoying the natural beauty of the outside.



Smart theme control light strip

Small living room warm design

Intelligent security code lock

Smart viewing skylight

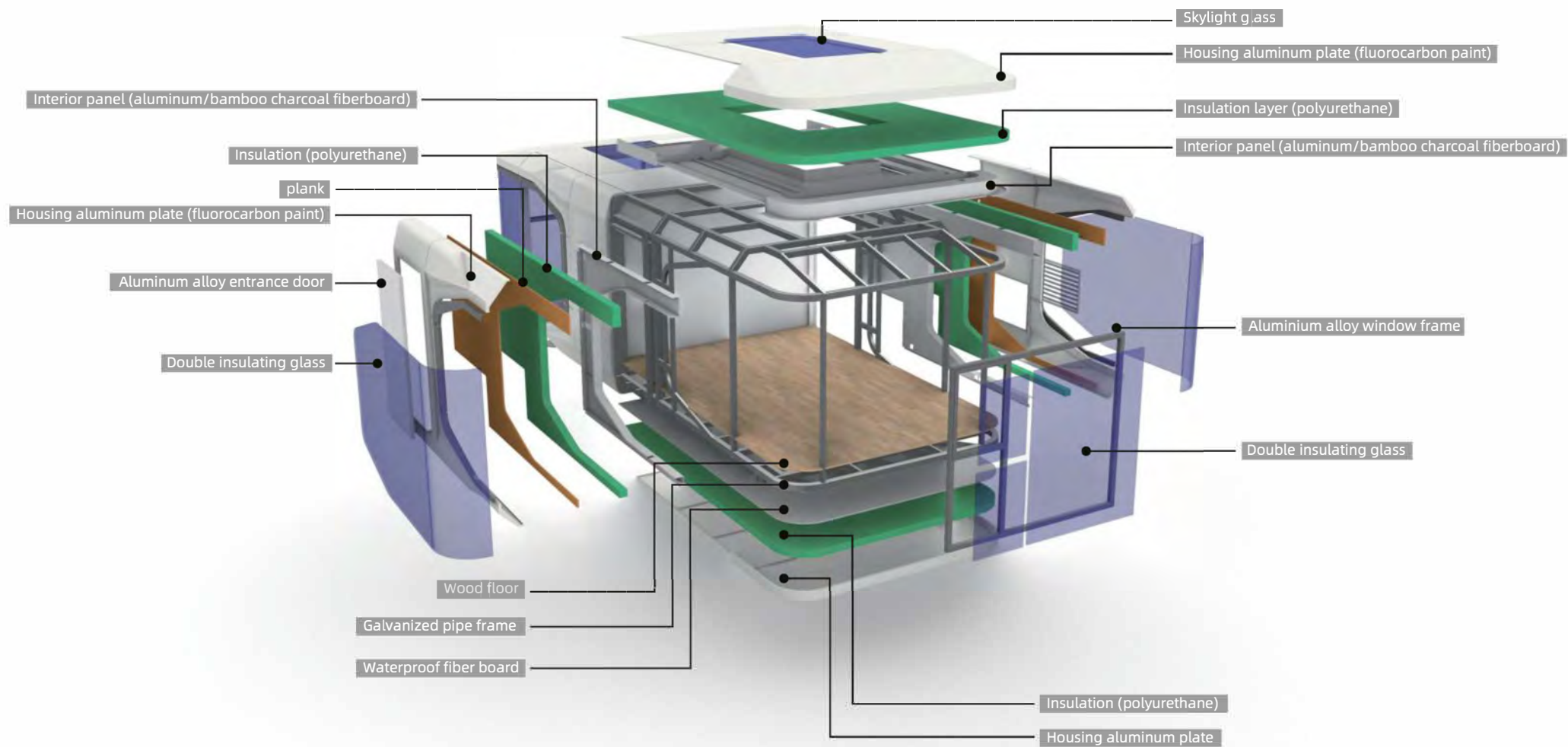
Sloping roof

360 degree double view balcony

270 degree view bedroom

High-tech explosion-proof glass





INTERNAL STRUCTURE ANALYSIS DIAGRAM



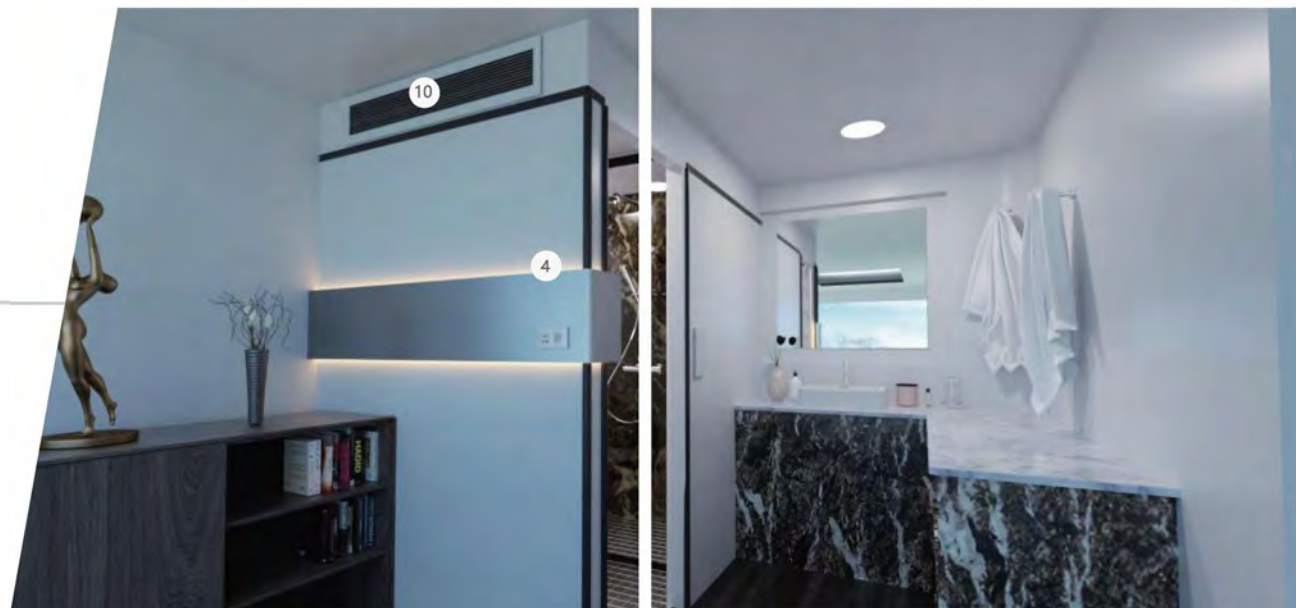
STANDARD FUNCTION

- | | |
|-----------------------------|------------------------------|
| 1 Intelligent control panel | 6 Air conditioner |
| 2 Integrated sound system | 7 Ground floodlight belt |
| 3 Ceiling light belt | 8 window frame lighting belt |
| 4 Ambiance light belt | 9 Automatic curtain |
| 5 Simple bar | 10 Fresh air |



OPTIONAL FUNCTION

- | | |
|--------------------------------------|--------------------------------|
| 11 Panoramic electric atomized glass | 12 Electric floor heating |
| 13 Skylight (with curtain) | 14 Automatic projection screen |



AI INTELLIGENCE SYSTEM

CROSS-BORDER INTEGRATION

Provide the overall solution of intelligent integrated equipment./



REMOTE CONTROL

Whole-house smart home system,
、 The mobile APP can be remotely controlled.

INTELLIGENT UPGRADE

Traditional guest room hardware intelligent upgrade and intelligent AI customer service, Help hotels reduce costs and increase efficiency to improve guest experience.





MULTIFACETED SYSTEM CONSTRUCTION

A system to solve hotel communication and enablement problems, Unified management background, convenient and fast

PRECISION DATA COLLECTION

Regularly help the hotel intelligent collection of data, for the hotel to continue to optimize the way of operation and maintenance to provide data support. Background automatic calculation of total revenue, cost, gross profit, financial more worry.



OTA ONLINE UPGRADE

CLOUD-BASED ONLINE PERFECT UPGRADE SYSTEM, REDUCING MAINTENANCE AND INSPECTION COSTS

PRODUCT CATALOGUE



SERIES I

GPS1

L : 5.85 M W : 3M H : 3.1M P:37



SERIES I

GPS2

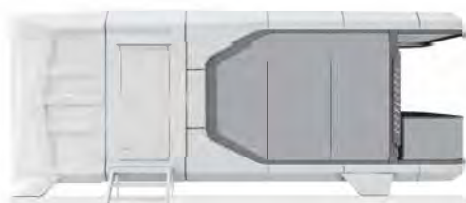
L : 8.5 M W : 3.3M H : 3.3M P:39



SERIES I

GPS3

L : 11.5 M W : 3.3M H : 3.3M 41



SERIES I

GPS4

L : 8.5 M W : 3.3M H : 3.3M P:43



SERIES I

GPS5

L : 11.5 M W : 3.3M H : 3.3M P:45



SERIES I

GPS6

L : 11.5 M W : 3.3M H : 3.3M P:47



SERIES II

GPS7

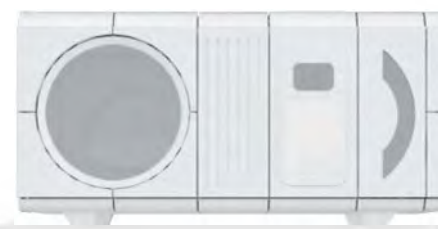
L : 6.6 M W : 3M H : 3.1M P:49



SERIES III

GPS8

L : 8 M W : 3.3M H : 3.2M P:51



SERIES IV

GPS9

L : 6.3 M W : 3M H : 3.3M P:53



SERIES V

GPS10

L : 8.5 M W : 3.3M H : 3.3M P:55



SERIES VI

GPS11

L : 8.5 M W : 3.3M H : 3.3M



SERIES VII

GPS12

L : 11.5 M W : 3.3M H : 3.3M

PRODUCT CATALOGUE



GPS13

L : 7 M W : 3M H : 3.3M



GPS14

L : 5.8 M W : 2.15M H : 2.5M P:58



GPS15

L : 3.85M W : 2.15M H : 2.5M P:57



GPS16

L : 11.5 M W : 2.15M H : 2.5M P:59



GPS17

L : 5.8 M W : 2.15M H : 2.5M P:60



GPS18

L : 3.6 M W : 3.6M H : 2.7M P:61



GPS19

L : 6.5M W : 3.5M H : 3.3M P:63



GPS20

L : 8.5M W : 3.5M H : 3.3M P:64



GPS21

L : 11.5M W : 3.5M H : 3.3M P:65



GPS22

L : 12M W : 2.4M H : 3M P:67

PRODUCT CATALOGUE



GPS23

L : 12M

W : 2.4M H : 3M

P:70



GPS24

L : 12M

W : 2.4M H : 3M

P:70

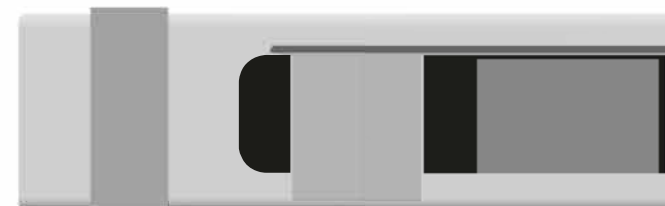


GPS25

L : 12M

W : 2.4M H : 3M

P:70



GPS26

L : 12M

W : 2.4M H : 3M

P:70



L : 12M W : 2.4M H : 3M P:70



L : 12M W : 2.4M H : 3M P:70

Customized OEM (Original Equipment Manufacturer)

Color standard housing module

Standard interior module

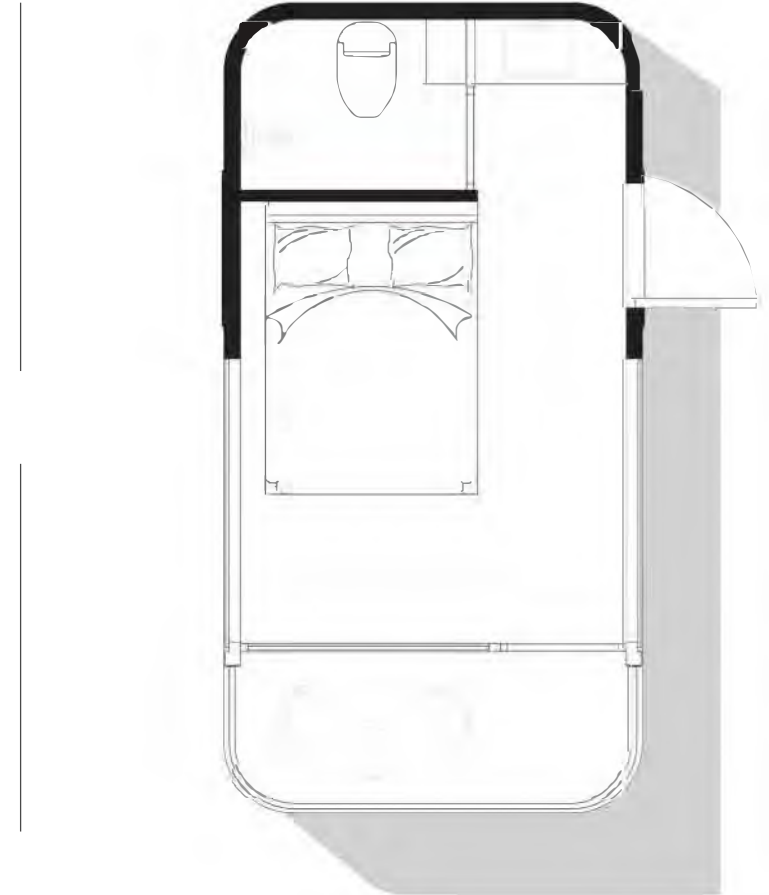
Standard cabinet module

Environment-friendly composite floor module

Domestic version

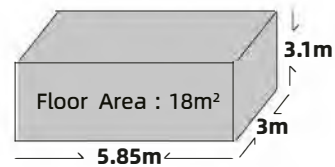


Export Version



PRODUCT SHOWCASE

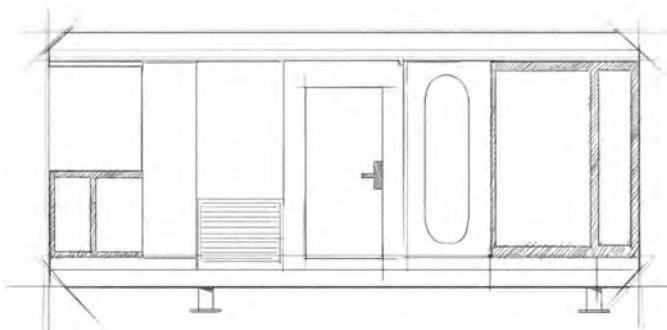
GP1



| | |
|----------------------------|---|
| MAIN STRUCTURE: | Thickened steel frame, aluminum exterior panels, polyurethane insulation layer, panoramic wall curtain glass (6+12+6 insulating glass), aluminum doors and Windows, intelligent access control, foot support. |
| INTERNAL STRUCTURE: | Bamboo charcoal fiberboard wall, advanced waterproof composite wood floor, indoor and outdoor multi-color warm light, electric curtain, large skylight, the whole house intelligent control system, brand socket panel. |
| SANITARY WARE: | Glass side sliding door, smart toilet, water heater, shower, brand basin, brand faucet. |
| MAIN EQUIPMENT: | Gree central air conditioning, water heater, bath ba wind heating multi-in-one integrated bath ba. |
| OPTIONAL: | Electric floor heating, water pipe antifreeze, projector, fire smoke alarm, starry roof. |



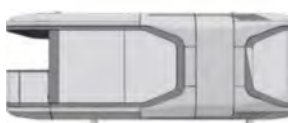
PRIMARY MANUSCRIPT



FIRST GENERATION



SECOND GENERATION



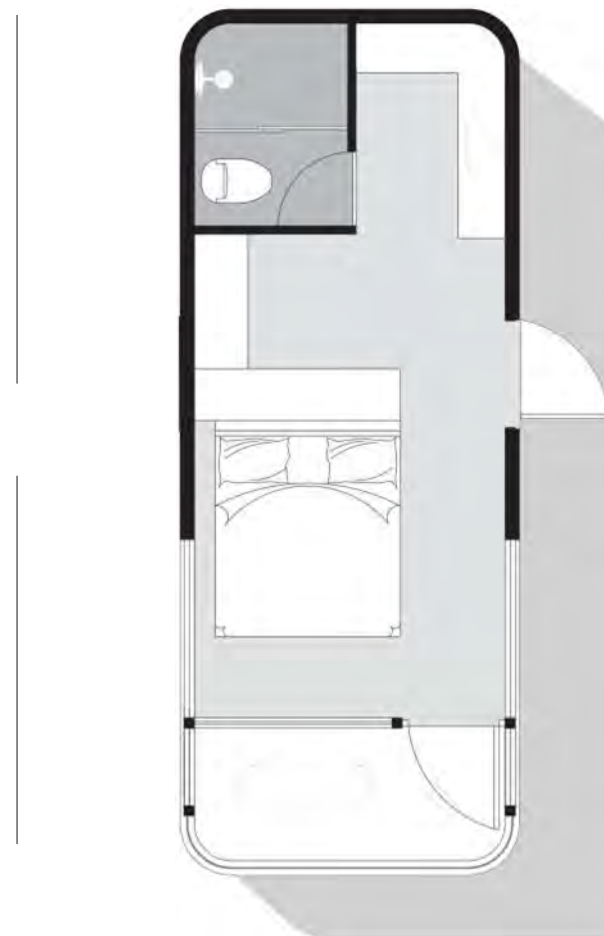
NEW THIRD GENERATION



Domestic version

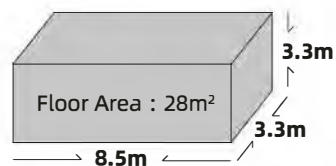


Export Version



PRODUCT
SHOWCASE

GPS2



MAIN STRUCTURE:

Thickened steel frame, aluminum exterior panels, polyurethane insulation layer, panoramic wall curtain glass (6+12+6 insulating glass), aluminum doors and Windows, intelligent access control, foot support.

INTERNAL STRUCTURE:

Bamboo charcoal fiberboard wall, advanced waterproof composite wood floor, indoor and outdoor multi-color warm light, electric curtain, large skylight, the whole house intelligent control system, brand socket panel.

SANITARY WARE:

Glass side sliding door, smart toilet, water heater, shower, brand basin, brand faucet.

MAIN EQUIPMENT:

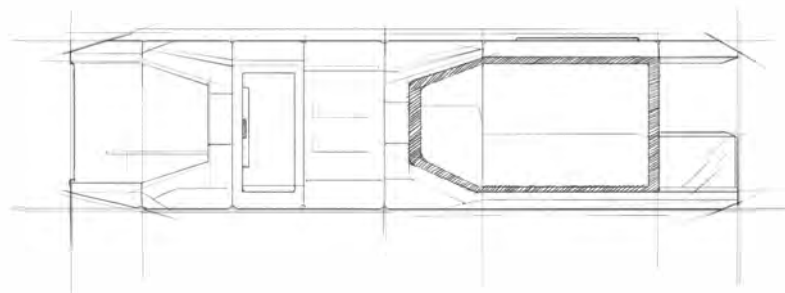
Gree central air conditioning, water heater, bath ba wind heating multi-in-one integrated bath ba.

OPTIONAL:

Electric floor heating, water pipe antifreeze, projector, fire smoke alarm, starry roof.



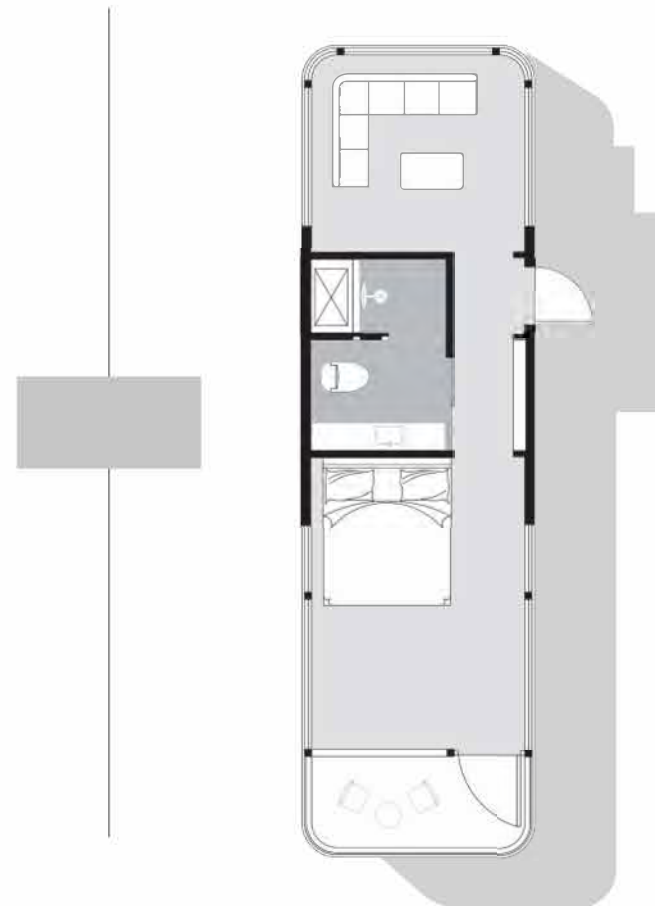
PRIMARY MANUSCRIPT



FIRST GENERATION



SECOND GENERATION



NEW THIRD GENERATION

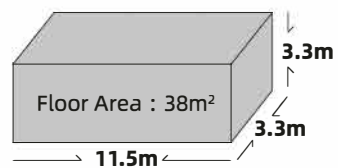


Domestic version

Export Version

PRODUCT
SHOWCASE

GPS3



MAIN STRUCTURE:

Thickened steel frame, aluminum exterior panels, polyurethane insulation layer, panoramic wall curtain glass (6+12+6 insulating glass), aluminum doors and Windows, intelligent access control, foot support.

INTERNAL STRUCTURE:

Bamboo charcoal fiberboard wall, advanced waterproof composite wood floor, indoor and outdoor multi-color warm light, electric curtain, large skylight, the whole house intelligent control system, brand socket panel.

SANITARY WARE:

Glass side sliding door, smart toilet, water heater, shower, brand basin, brand faucet.

MAIN EQUIPMENT:

Gree central air conditioning, water heater, bath ba wind heating multi-in-one integrated bath ba.

OPTIONAL:

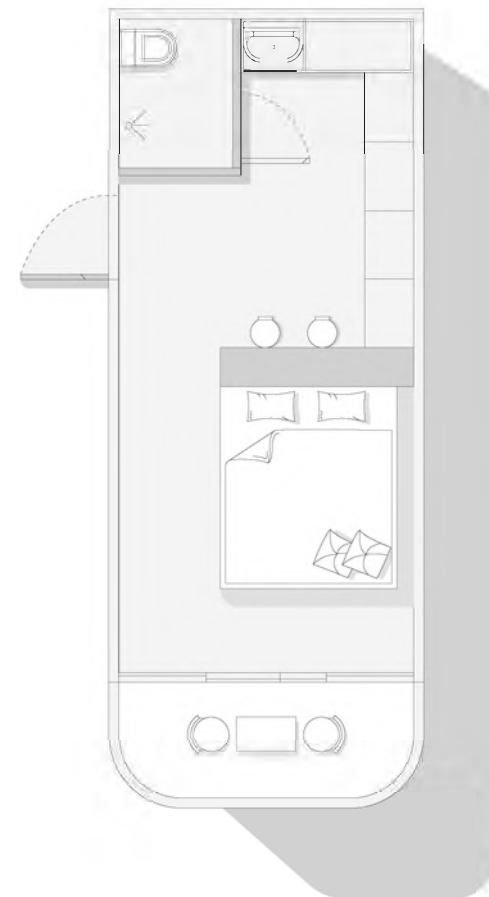
Electric floor heating, water pipe antifreeze, projector, fire smoke alarm, starry roof.



Domestic version

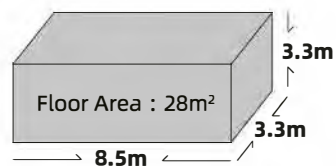


Export Version



PRODUCT SHOWCASE

GPS4



MAIN STRUCTURE: Thickened steel frame, aluminum exterior panels, polyurethane insulation layer, panoramic wall curtain glass (6+12+6 insulating glass), aluminum doors and Windows, intelligent access control, foot support.

INTERNAL STRUCTURE: Bamboo charcoal fiberboard wall, advanced waterproof composite wood floor, indoor and outdoor multi-color warm light, electric curtain, large skylight, the whole house intelligent control system, brand socket panel.

SANITARY WARE: Glass side sliding door, smart toilet, water heater, shower, brand basin, brand faucet.

MAIN EQUIPMENT: Gree central air conditioning, water heater, bath ba wind heating multi-in-one integrated bath ba.

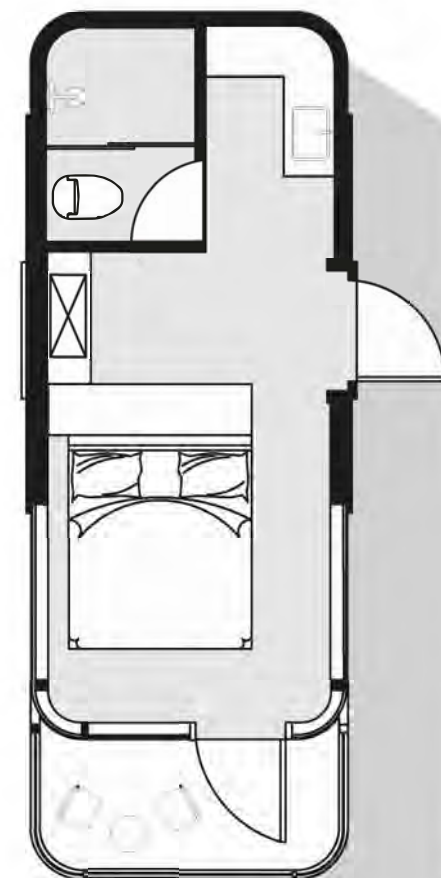
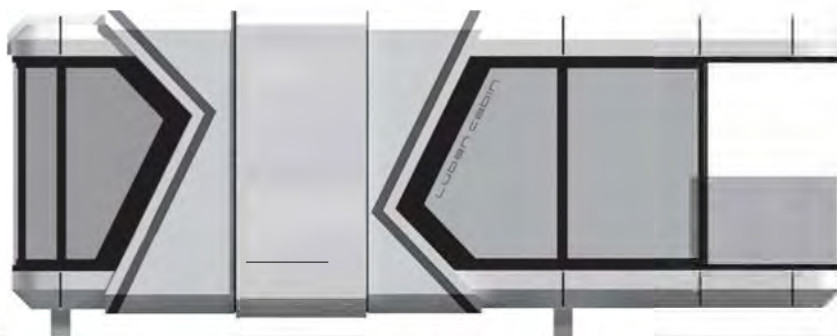
OPTIONAL: Electric floor heating, water pipe antifreeze, projector, fire smoke alarm, starry roof.



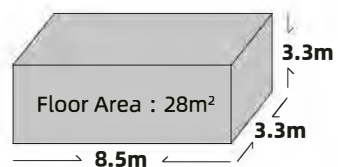
Domestic version



Export Version



PRODUCT SHOWCASE | GPS5



MAIN STRUCTURE: Thickened steel frame, aluminum exterior panels, polyurethane insulation layer, panoramic wall curtain glass (6+12+6 insulating glass), aluminum doors and Windows, intelligent access control, foot support.

INTERNAL STRUCTURE: Bamboo charcoal fiberboard wall, advanced waterproof composite wood floor, indoor and outdoor multi-color warm light, electric curtain, large skylight, the whole house intelligent control system, brand socket panel.

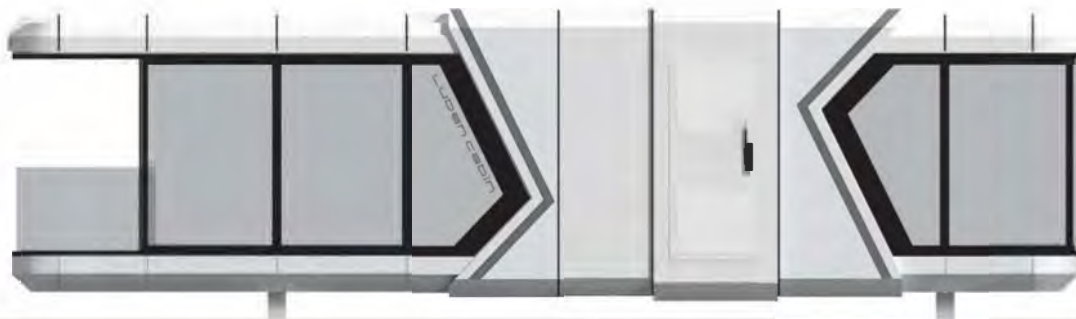
SANITARY WARE: Glass side sliding door, smart toilet, water heater, shower, brand basin, brand faucet.

MAIN EQUIPMENT: Gree central air conditioning, water heater, bath ba wind heating multi-in-one integrated bath ba.

OPTIONAL: Electric floor heating, water pipe antifreeze, projector, fire smoke alarm, starry roof.



Domestic version

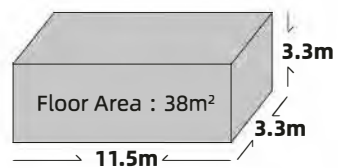


Export Version



PRODUCT
SHOWCASE

GPS6



MAIN STRUCTURE: Thickened steel frame, aluminum exterior panels, polyurethane insulation layer, panoramic wall curtain glass (6+12+6 insulating glass), aluminum doors and Windows, intelligent access control, foot support.

INTERNAL STRUCTURE: Bamboo charcoal fiberboard wall, advanced waterproof composite wood floor, indoor and outdoor multi-color warm light, electric curtain, large skylight, the whole house intelligent control system, brand socket panel.

SANITARY WARE: Glass side sliding door, smart toilet, water heater, shower, brand basin, brand faucet.

MAIN EQUIPMENT: Gree central air conditioning, water heater, bath ba wind heating multi-in-one integrated bath ba.

OPTIONAL: Electric floor heating, water pipe antifreeze, projector, fire smoke alarm, starry roof.



Domestic version

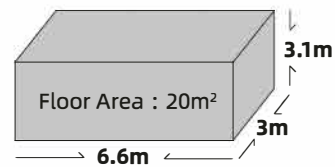


Export Version

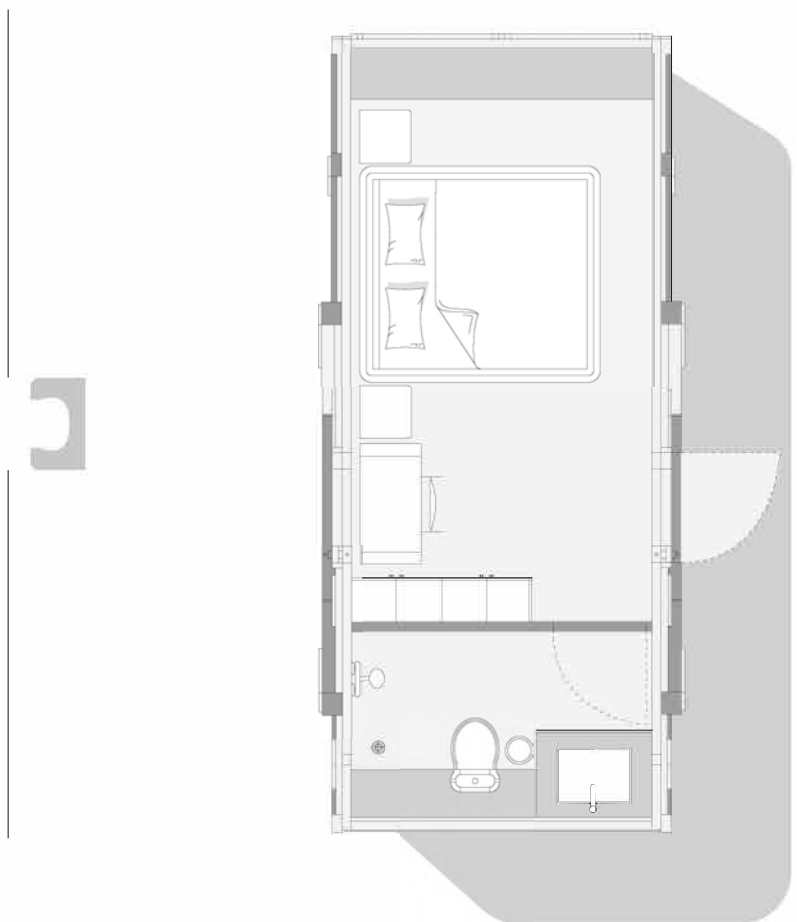


**PRODUCT
SHOWCASE**

GPS7



| | |
|----------------------------|---|
| MAIN STRUCTURE: | Thickened steel frame, aluminum exterior panels, polyurethane insulation layer, panoramic wall curtain glass (6+12+6 insulating glass), aluminum doors and Windows, intelligent access control, foot support. |
| INTERNAL STRUCTURE: | Bamboo charcoal fiberboard wall, advanced waterproof composite wood floor, indoor and outdoor multi-color warm light, electric curtain, large skylight, the whole house intelligent control system, brand socket panel. |
| SANITARY WARE: | Glass side sliding door, smart toilet, water heater, shower, brand basin, brand faucet. |
| MAIN EQUIPMENT: | Gree central air conditioning, water heater, bath ba wind heating multi-in-one integrated bath ba. |
| OPTIONAL: | Electric floor heating, water pipe antifreeze, projector, fire smoke alarm, starry roof. |

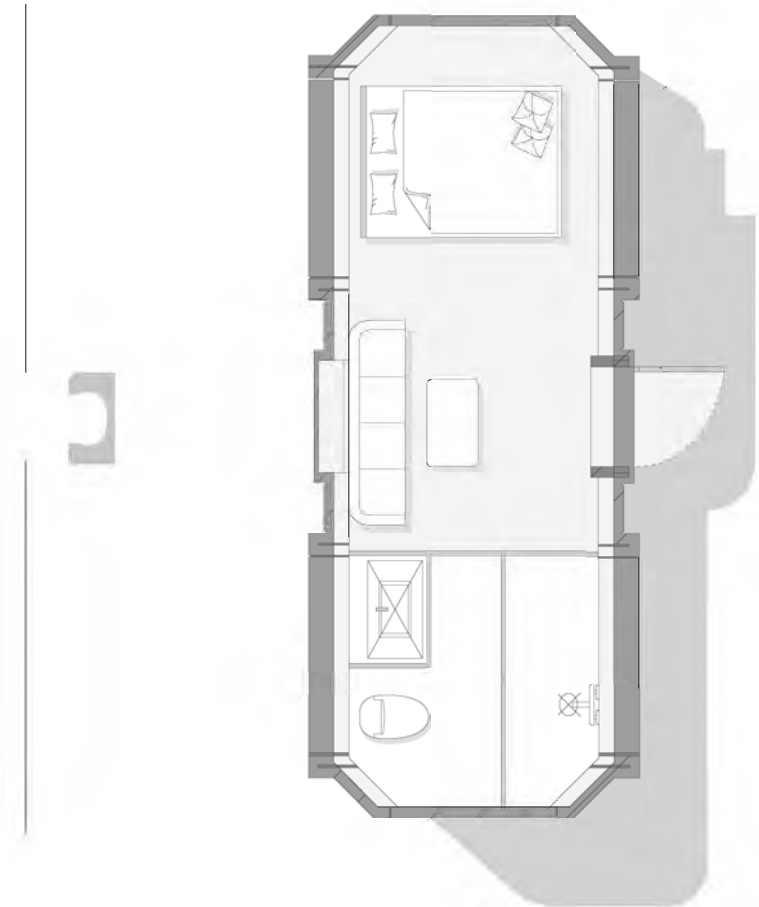




Domestic version

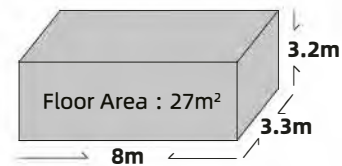


Export Version



PRODUCT SHOWCASE

GPS8



| | |
|----------------------------|---|
| MAIN STRUCTURE: | Thickened steel frame, aluminum exterior panels, polyurethane insulation layer, panoramic wall curtain glass (6+12+6 insulating glass), aluminum doors and Windows, intelligent access control, foot support. |
| INTERNAL STRUCTURE: | Bamboo charcoal fiberboard wall, advanced waterproof composite wood floor, indoor and outdoor multi-color warm light, electric curtain, large skylight, the whole house intelligent control system, brand socket panel. |
| SANITARY WARE: | Glass side sliding door, smart toilet, water heater, shower, brand basin, brand faucet. |
| MAIN EQUIPMENT: | Gree central air conditioning, water heater, bath ba wind heating multi-in-one integrated bath ba. |
| OPTIONAL: | Electric floor heating, water pipe antifreeze, projector, fire smoke alarm, starry roof. |



Domestic version

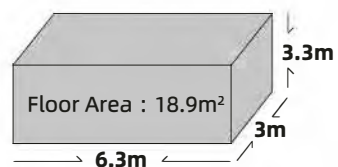


Export Version



PRODUCT SHOWCASE

GPS9



MAIN STRUCTURE: Thickened steel frame, aluminum exterior panels, polyurethane insulation layer, panoramic wall curtain glass (6+12+6 insulating glass), aluminum doors and Windows, intelligent access control, foot support.

INTERNAL STRUCTURE: Bamboo charcoal fiberboard wall, advanced waterproof composite wood floor, indoor and outdoor multi-color warm light, electric curtain, large skylight, the whole house intelligent control system, brand socket panel.

SANITARY WARE: Glass side sliding door, smart toilet, water heater, shower, brand basin, brand faucet.

MAIN EQUIPMENT: Gree central air conditioning, water heater, bath ba wind heating multi-in-one integrated bath ba.

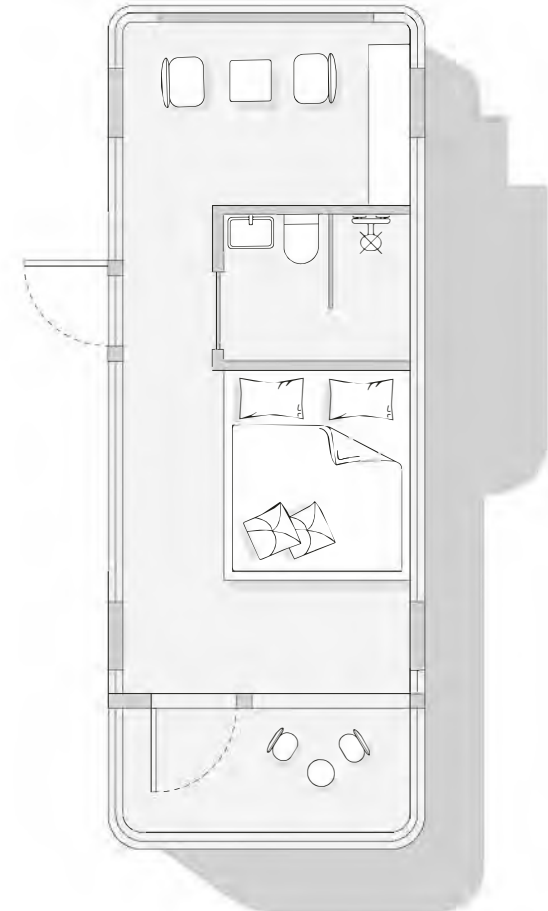
OPTIONAL: Electric floor heating, water pipe antifreeze, projector, fire smoke alarm, starry roof.



Domestic version

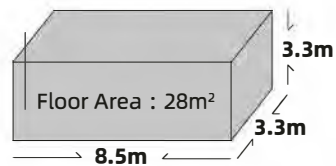


Export Version



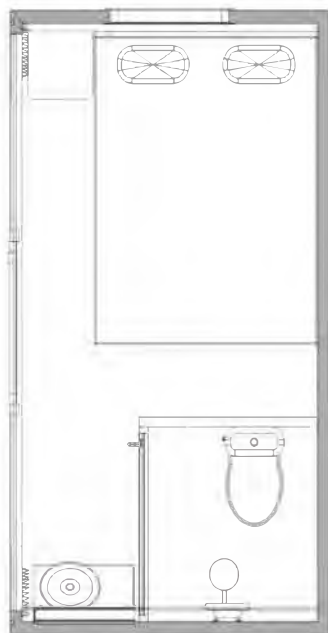
PRODUCT SHOWCASE

GPS10



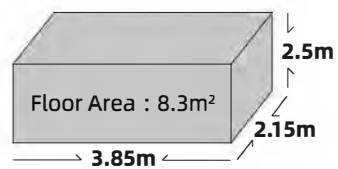
| | |
|----------------------------|---|
| MAIN STRUCTURE: | Thickened steel frame, aluminum exterior panels, polyurethane insulation layer, panoramic wall curtain glass (6+12+6 insulating glass), aluminum doors and Windows, intelligent access control, foot support. |
| INTERNAL STRUCTURE: | Bamboo charcoal fiberboard wall, advanced waterproof composite wood floor, indoor and outdoor multi-color warm light, electric curtain, large skylight, the whole house intelligent control system, brand socket panel. |
| SANITARY WARE: | Glass side sliding door, smart toilet, water heater, shower, brand basin, brand faucet. |
| MAIN EQUIPMENT: | Gree central air conditioning, water heater, bath ba wind heating multi-in-one integrated bath ba. |
| OPTIONAL: | Electric floor heating, water pipe antifreeze, projector, fire smoke alarm, starry roof. |



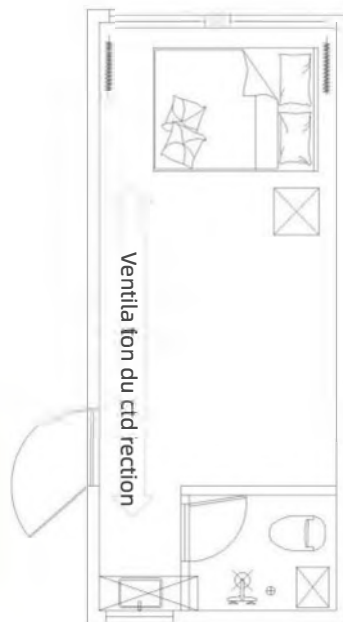


PRODUCT SHOWCASE

GPS11

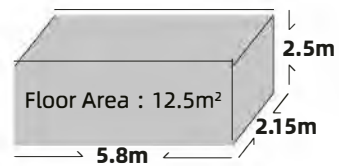


| | |
|---------------------------|---|
| MAIN STRUCTURE | : Thickened steel frame, aluminum exterior panels, polyurethane insulation layer, panoramic wall curtain glass (6+12+6 insulating glass), aluminum doors and Windows, intelligent access control, foot support. |
| INTERNAL STRUCTURE | : Bamboo charcoal fiberboard wall, advanced waterproof composite wood floor, indoor and outdoor multi-color warm light, electric curtain, large skylight, the whole house intelligent control system, brand socket panel. |
| SANITARY WARE | : Glass side sliding door, smart toilet, water heater, shower, brand basin, brand faucet. |
| MAIN EQUIPMENT | : Gree central air conditioning, water heater, bath ba wind heating multi-in-one integrated bath ba. |
| OPTIONAL | : Electric floor heating, water pipe antifreeze, projector, fire smoke alarm, starry roof. |

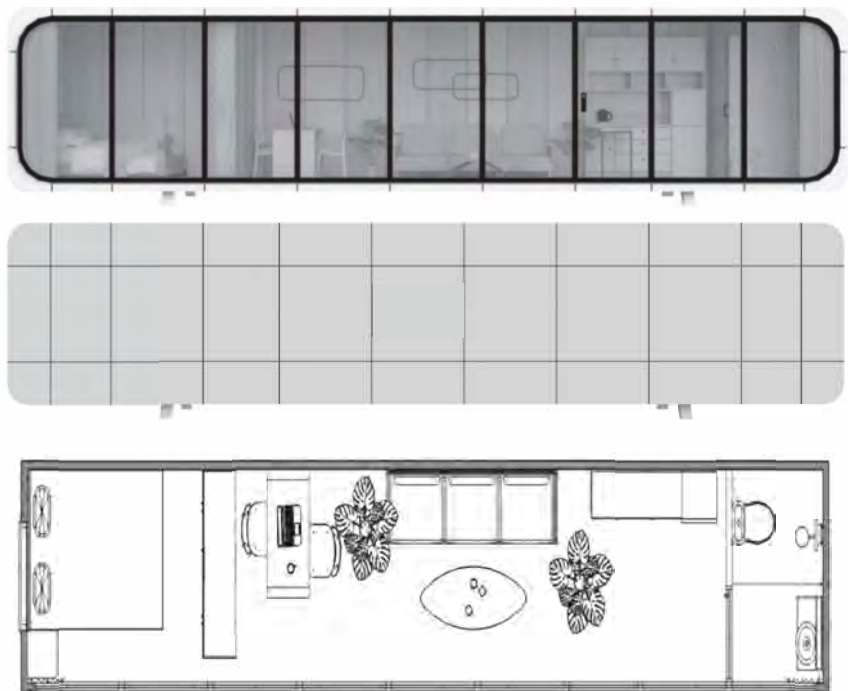


PRODUCT SHOWCASE

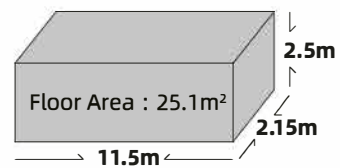
GPS12



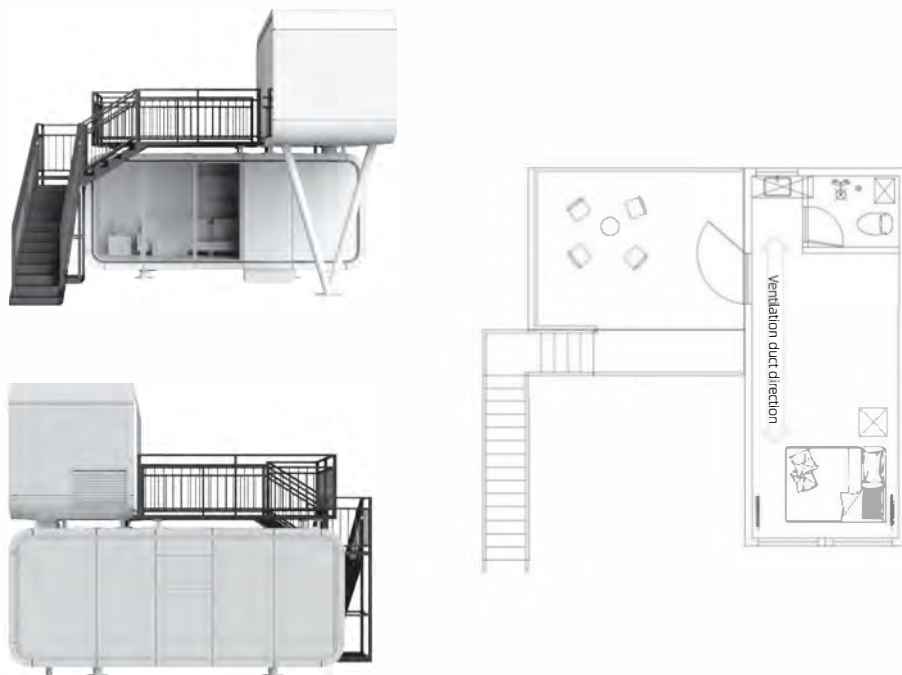
| | |
|---------------------------|---|
| MAIN STRUCTURE | : Thickened steel frame, aluminum exterior panels, polyurethane insulation layer, panoramic wall curtain glass (6+12+6 insulating glass), aluminum doors and Windows, intelligent access control, foot support. |
| INTERNAL STRUCTURE | : Bamboo charcoal fiberboard wall, advanced waterproof composite wood floor, indoor and outdoor multi-color warm light, electric curtain, large skylight, the whole house intelligent control system, brand socket panel. |
| SANITARY WARE | : Glass side sliding door, smart toilet, water heater, shower, brand basin, brand faucet. |
| MAIN EQUIPMENT | : Gree central air conditioning, water heater, bath ba wind heating multi-in-one integrated bath ba. |
| OPTIONAL | : Electric floor heating, water pipe antifreeze, projector, fire smoke alarm, starry roof. |



GPS13

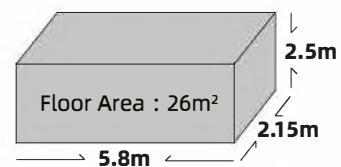


| | |
|---------------------------|---|
| MAIN STRUCTURE | : Thickened steel frame, aluminum exterior panels, polyurethane insulation layer, panoramic wall curtain glass (6+12+6 insulating glass), aluminum doors and Windows, intelligent access control, foot support. |
| INTERNAL STRUCTURE | : Bamboo charcoal fiberboard wall, advanced waterproof composite wood floor, indoor and outdoor multi-color warm light, electric curtain, large skylight, the whole house intelligent control system, brand socket panel. |
| SANITARY WARE | : Glass side sliding door, smart toilet, water heater, shower, brand basin, brand faucet. |
| MAIN EQUIPMENT | : Gree central air conditioning, water heater, bath ba wind heating multi-in-one integrated bath ba. |
| OPTIONAL | : Electric floor heating, water pipe antifreeze, projector, fire smoke alarm, starry roof. |



PRODUCT SHOWCASE

GPS14

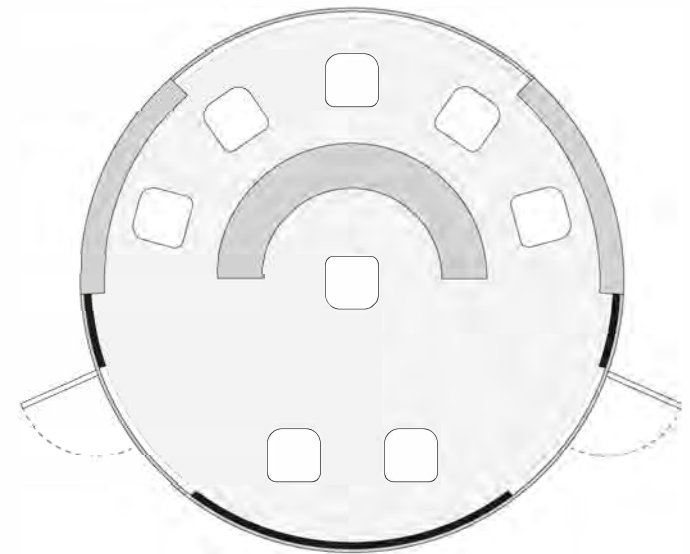


| | |
|---------------------------|---|
| MAIN STRUCTURE | : Thickened steel frame, aluminum exterior panels, polyurethane insulation layer, panoramic wall curtain glass (6+12+6 insulating glass), aluminum doors and Windows, intelligent access control, foot support. |
| INTERNAL STRUCTURE | : Bamboo charcoal fiberboard wall, advanced waterproof composite wood floor, indoor and outdoor multi-color warm light, electric curtain, large skylight, the whole house intelligent control system, brand socket panel. |
| SANITARY WARE | : Glass side sliding door, smart toilet, water heater, shower, brand basin, brand faucet. |
| MAIN EQUIPMENT | : Gree central air conditioning, water heater, bath ba wind heating multi-in-one integrated bath ba. |
| OPTIONAL | : Electric floor heating, water pipe antifreeze, projector, fire smoke alarm, starry roof. |

Domestic version

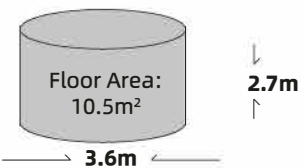


Export Version



PRODUCT SHOWCASE

GPS15



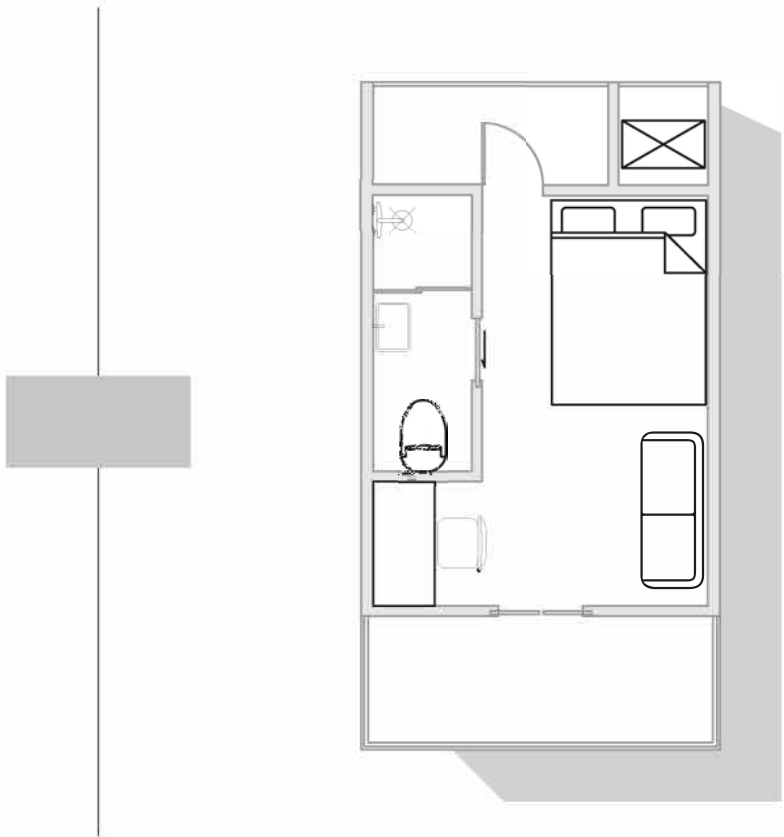
| | |
|----------------------------|---|
| MAIN STRUCTURE: | Thickened steel frame, aluminum exterior panels, polyurethane insulation layer, panoramic wall curtain glass (6+12+6 insulating glass), aluminum doors and Windows, intelligent access control, foot support. |
| INTERNAL STRUCTURE: | Bamboo charcoal fiberboard wall, advanced waterproof composite wood floor, indoor and outdoor multi-color warm light, electric curtain, large skylight, the whole house intelligent control system, brand socket panel. |
| SANITARY WARE: | Glass side sliding door, smart toilet, water heater, shower, brand basin, brand faucet. |
| MAIN EQUIPMENT: | Gree central air conditioning, water heater, bath ba wind heating multi-in-one integrated bath ba. |
| OPTIONAL: | Electric floor heating, water pipe antifreeze, projector, fire smoke alarm, starry roof. |



Domestic version

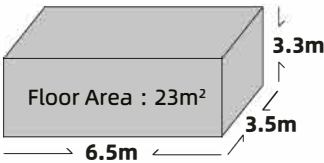


Export Version



**PRODUCT
SHOWCASE**

GPS16

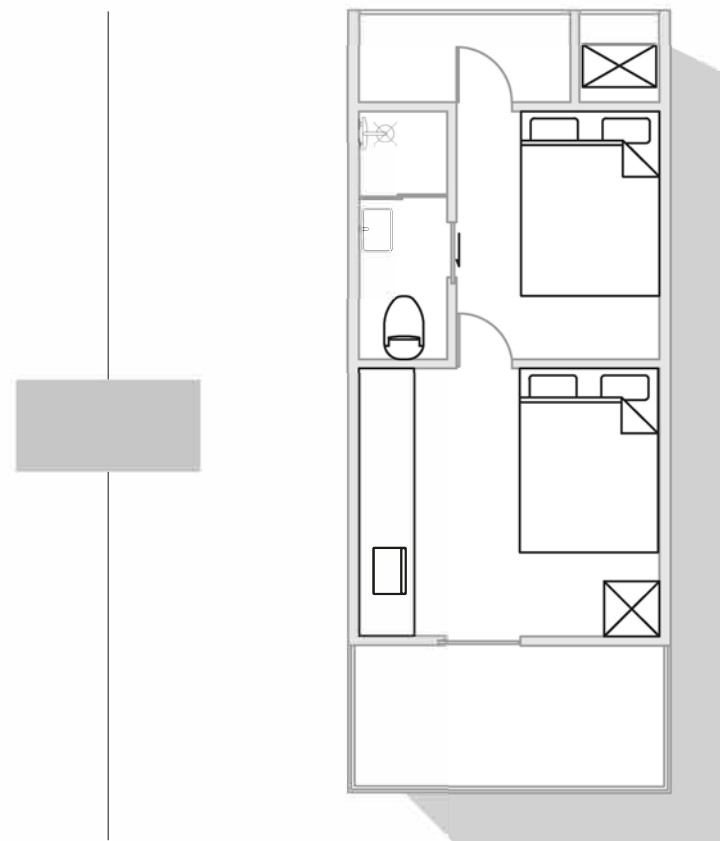


| | |
|----------------------------|---|
| MAIN STRUCTURE: | Thickened steel frame, aluminum exterior panels, polyurethane insulation layer, panoramic wall curtain glass (6+12+6 insulating glass), aluminum doors and Windows, intelligent access control, foot support. |
| INTERNAL STRUCTURE: | Bamboo charcoal fiberboard wall, advanced waterproof composite wood floor, indoor and outdoor multi-color warm light, electric curtain, large skylight, the whole house intelligent control system, brand socket panel. |
| SANITARY WARE: | Glass side sliding door, smart toilet, water heater, shower, brand basin, brand faucet. |
| MAIN EQUIPMENT: | Gree central air conditioning, water heater, bath ba wind heating multi-in-one integrated bath ba. |
| OPTIONAL: | Electric floor heating, water pipe antifreeze, projector, fire smoke alarm, starry roof. |

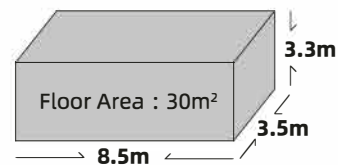
Domestic version



Export Version



**PRODUCT
SHOWCASE** | **GPS17**

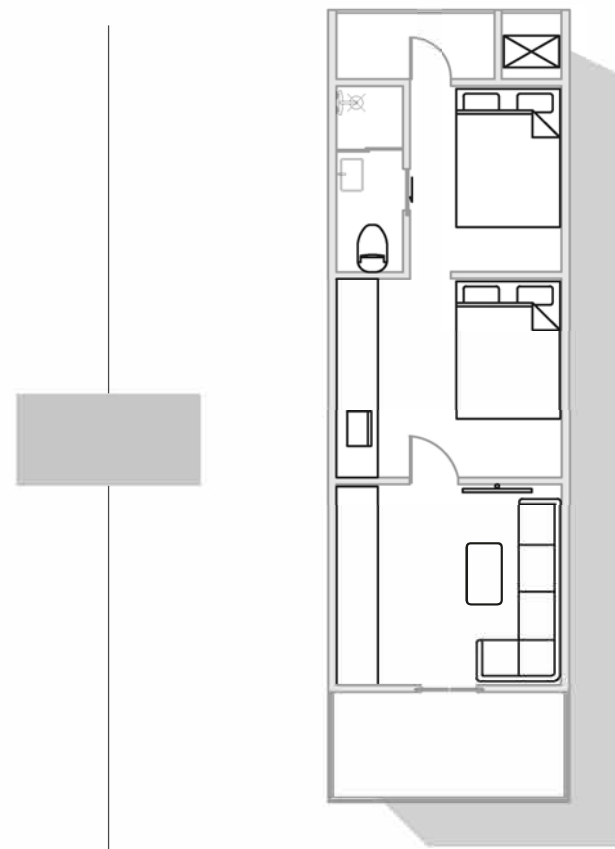


| | |
|----------------------------|---|
| MAIN STRUCTURE: | Thickened steel frame, aluminum exterior panels, polyurethane insulation layer, panoramic wall curtain glass (6+12+6 insulating glass), aluminum doors and Windows, intelligent access control, foot support. |
| INTERNAL STRUCTURE: | Bamboo charcoal fiberboard wall, advanced waterproof composite wood floor, indoor and outdoor multi-color warm light, electric curtain, large skylight, the whole house intelligent control system, brand socket panel. |
| SANITARY WARE: | Glass side sliding door, smart toilet, water heater, shower, brand basin, brand faucet. |
| MAIN EQUIPMENT: | Gree central air conditioning, water heater, bath ba wind heating multi-in-one integrated bath ba. |
| OPTIONAL: | Electric floor heating, water pipe antifreeze, projector, fire smoke alarm, starry roof. |

Domestic version

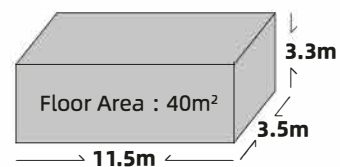


Export Version



PRODUCT SHOWCASE

GPS18



| | |
|----------------------------|---|
| MAIN STRUCTURE: | Thickened steel frame, aluminum exterior panels, polyurethane insulation layer, panoramic wall curtain glass (6+12+6 insulating glass), aluminum doors and Windows, intelligent access control, foot support. |
| INTERNAL STRUCTURE: | Bamboo charcoal fiberboard wall, advanced waterproof composite wood floor, indoor and outdoor multi-color warm light, electric curtain, large skylight, the whole house intelligent control system, brand socket panel. |
| SANITARY WARE: | Glass side sliding door, smart toilet, water heater, shower, brand basin, brand faucet. |
| MAIN EQUIPMENT: | Gree central air conditioning, water heater, bath ba wind heating multi-in-one integrated bath ba. |
| OPTIONAL: | Electric floor heating, water pipe antifreeze, projector, fire smoke alarm, starry roof. |

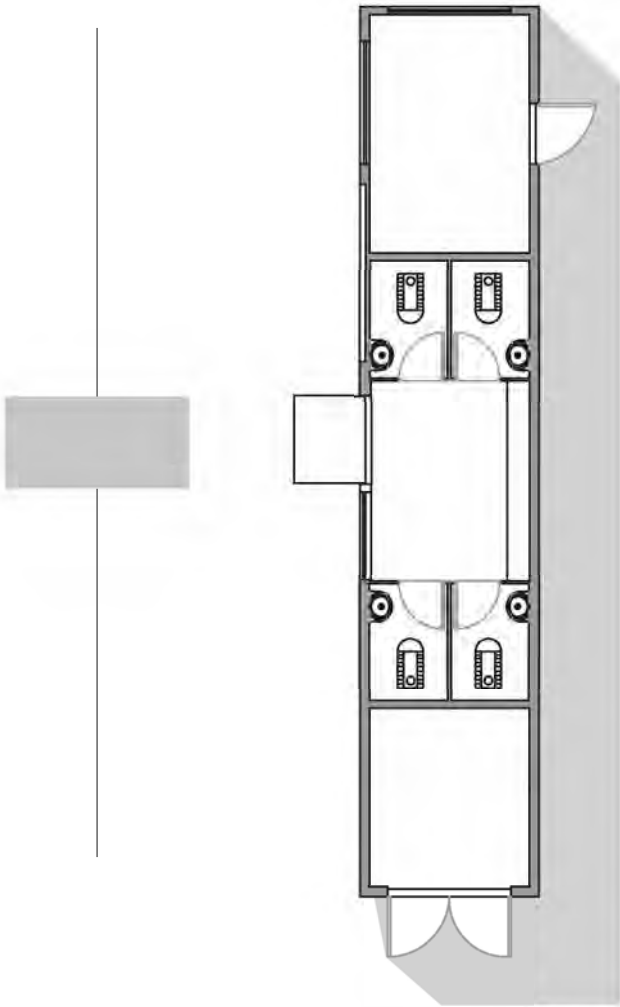
| | |
|--|--|
| | |
| | |



Domestic version

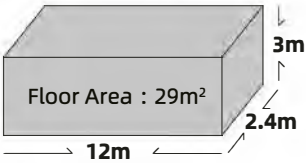


Export Version



PRODUCT
SHOWCASE

GPS19



| | |
|---------------------|--|
| MAIN STRUCTURE: | Thickened steel frame, aluminum exterior panels, polyurethane insulation layer, aluminum doors and Windows, intelligent access control, foot support. |
| INTERNAL STRUCTURE: | Bamboo charcoal fiberboard wall, advanced waterproof composite wood floor, indoor and outdoor multi-color warm light, electric curtain, brand socket panel. |
| SANITARY WARE: | Squatting Toilet, Urinal, Cosmetic mirror, Automatic sensor faucet, Handrails for the disabled. |
| MAIN EQUIPMENT: | Monitoring Systems, Electrical Controls, Water Circuit, Lighting System, Large Display Screen, Exhaust system. |
| OPTIONAL: | Multimedia Screen, Vacuum System, Manure treatment system, Energy Storage Booster Pumps, Soap Wave Machine, Sweep code dispenser, Signage, Public Management Module. |



INTERNAL CONFIGURATION





USAGE SCENARIO



BEAUTIFUL RURAL LUXURY RESORT

ONE

It is convenient and eco-friendly to dismantle and build, it is the best choice for holding various themed activities, outdoor camping and accommodation activities, outdoor equipment exhibition.

CULTURAL AND TOURISM COMPLEX AND FOREST HEALTH VALLEY

TWO

The capsule house adapt to a variety of terrain environment, and it is convenient for transportation. It provides a more superior choice for the development of cultural tourism and health care industry.

URBAN RENEWAL SPACE AND CITIZEN STATION

THREE

It covers a small area and is practical, and can replace some public facilities in urban construction, such as blood donation point, public toilet, citizen station, etc.



SMART TOURISM SHARING CAMPING SITE

FOUR

It can be used for group building development, travel study research, travel camping to enhance the sense of experience and enjoy the ease of natural intimacy.

ECOLOGICAL RESORT HOTEL

FIVE

The resort hotel introduces the future cabin, which not only absorbs the eye and drains, but also saves time, land area and engineering cost.

EDUCATION, MEDICAL CARE, HEALTH CARE AND OLD-AGE CARE

SIX

In terms of education, medical care and health care for the elderly, it provides convenient stations and intelligent facilities to assist education and medical care, and the design is more humane.

CAMP PLANNING



ONE-STOP HIGH-END CAMP SOLUTION



LANDING CASE





Building area: 3000 square meters
Project scale: 85 sets



Building area: 1520m²
Project scale: 80sets



Building area: 2000m²
Project scale: 98 sets



Building area: 1600m²
Project scale: 60 sets

LANDING CASE



Building area: 5000 square meters
Project scale: 100sets, the number of visitors has exceeded 2 million



Construction area: 1860m²
Project scale: 56 sets



Building area: 1000 square meters
Project scale: 50 sets



Building area: 2000m²
Project scale: 77 sets



Building area: 1000 square meters
Project scale: 90sets

TRANSPORTATION MODE





20 | TRANSPORTATION MODE

REMARK

Before installing the product, the customer needs to complete the on-site engineering of water supply, power supply, sewage pipeline and load-bearing foundation according to our product standard basic hydropower drawings. Under the guidance of our technicians, it will be accurately positioned to the designed installation point. After the water and electricity are connected, the water and electricity test will be completed and handed over to the customer for acceptance.

1

Our company unified arrangement of truck transport to the project site.
The standard truck is 17.5m long semi-trailer, 3m transport width, transport height no more than 4.2m, can be free to pass the national highway.

2

After the goods arrive at the site, the customer needs to contact the local crane service. Our technical team will arrive at the site in advance for guidance. Lifting weight of 5 to 10 tons, it is recommended to use not less than 25 tons of crane loading and unloading.



REMARK

Before installing the product, the customer needs to complete the on-site engineering of water supply, power supply, sewage pipeline and load-bearing foundation according to our product standard basic hydropower drawings. Under the guidance of our technicians, it will be accurately positioned to the designed installation point. After the water and electricity are connected, the water and electricity test will be completed and handed over to the customer for acceptance.

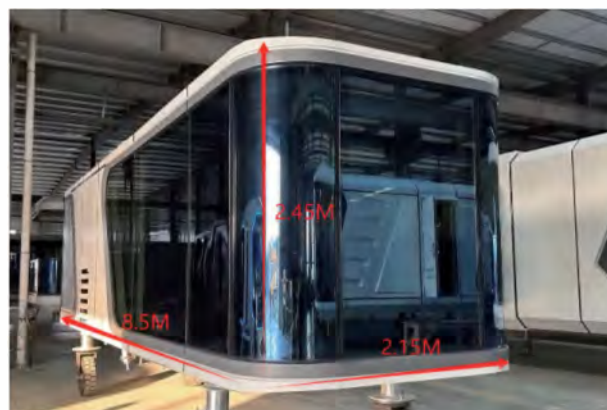
(一) STANDARD VERSION OF DISASSEMBLED TYPE

This version is a cleverly divided style of the standard size. Its design allows the cabin to be easily loaded into a 40-foot high container, greatly optimizing the use of transportation space, effectively reducing transportation costs, and ensuring the user experience after the customers receive the goods. However, please note that some simple manual assembly is required upon arrival, but this process is not complex and can be completed by following the instructions.



(二) REDUCED SIZE FULLY ASSEMBLED MODEL

To meet the loading requirements of a 40-foot high container, we have specially introduced this reduced size, fully assembled model. It has been moderately adjusted in height and width to ensure that the finished product can be shipped as a whole, without the need for additional disassembly. This not only saves on transportation costs but also eliminates the assembly process, further reducing labor costs.



(三) STANDARD VERSION OF FLAT RACK CONTAINER MODEL

This version retains the standard dimensions, offering spacious and comfortable space that provides an excellent living experience for users. Due to its larger size, we have specially designed a flat rack container for shipping to ensure stability and safety during transport. Compared to other models, this version saves a considerable amount of labor costs. Upon arrival, only simple hoisting operations are needed, and it can be inhabited within two hours, making it convenient and fast.

