



Container Houses Catalog



PRODUCTS INTRODUCTION



(Detachable Container House)

The detachable container house is a mobile and reusable construction product. Modular design and factory production are adopted, with the container as the basic unit, which can be used alone or through different combinations of horizontal and vertical directions to form a spacious use space, and the vertical direction can be stacked. The unit structure is a standard component welded with special section steel, and the containers are connected by bolts. The structure is simple and the installation is convenient and quick.

It can be used for many purpose, such as office, accommodation, conference rooms, field exploration office, dormitory etc...

(Detachable Container House)

5 Key Advantages/Features

- 1. Easy Relocation*** – Compact design for frequent site changes
- 2. Heavy-duty Steel Frame*** – High impact resistance & minimal deformation
- 3. IP65 Waterproof*** – Precision-sealed joints & weatherproof walls
- 4. Customizable Layouts*** – Offices/Dorms/Toilets in modular combinations
- 5. Quick Assembly*** – Tool-free bolts + Fire/Corrosion/Quake resistant



(Detachable Container House)

Color/Pattern Selection



Wood Grain



Light Gray



Blue



Red



Camouflage Green



Grass Green



Yellow



Green



Black Brick Pattern



Pink



Dusty Purple



Dark Gray

(Detachable Container House)

***More
Customization***



Solid Wood Skirting



SPC Floor



PVC Leather Floor



831 Ceiling Sheet



Wallpaper



Metal carved board



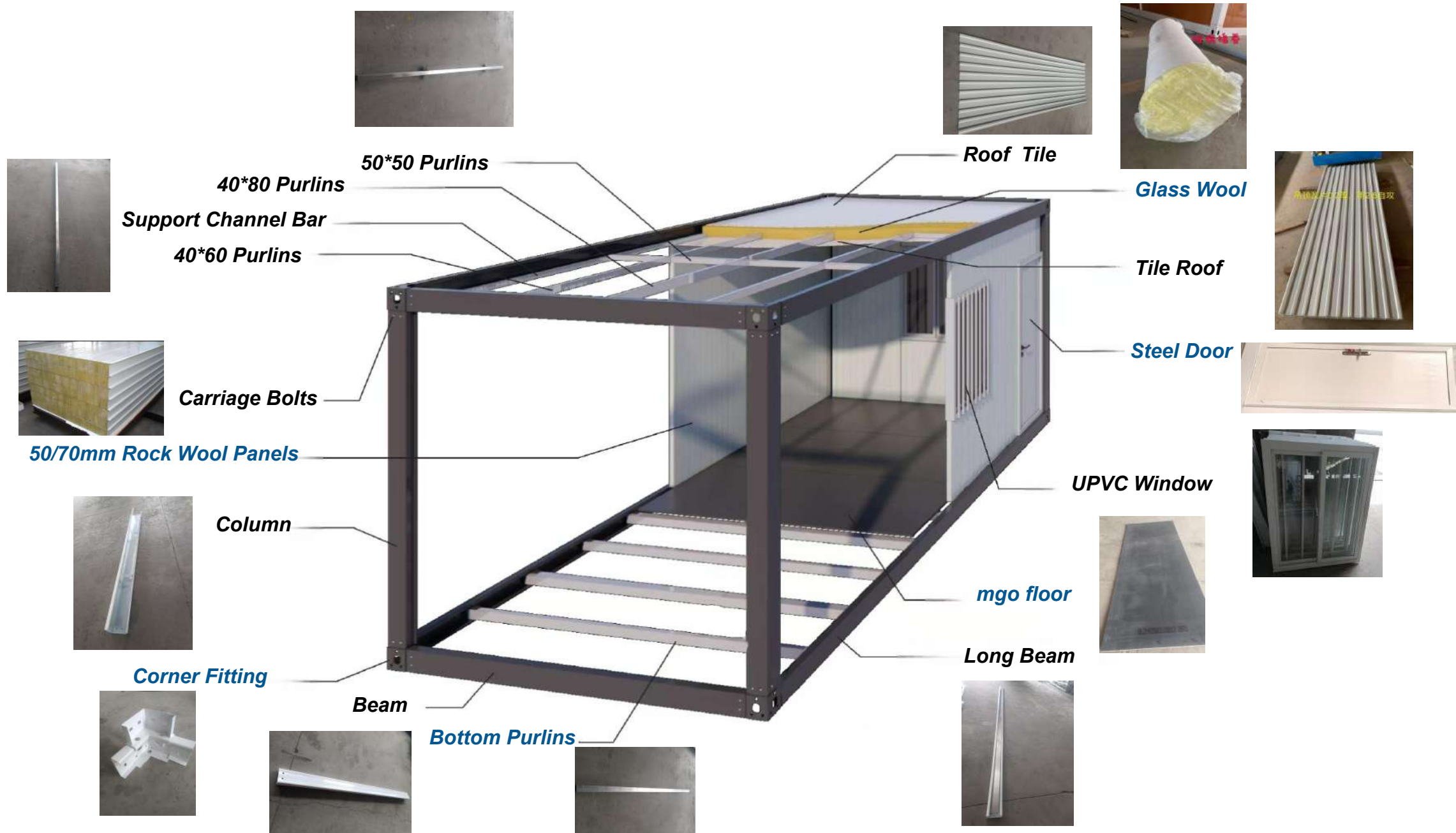
Integrated wall panel

(Detachable Container House)

Basic Specifications

Type	Detachable
Length	5950mm
Width	3000mm
Height	2800mm
Area	17.85m ²
Weight	1300kg
Windproof	Level12 32.7-41.4m/s
Shockproof Level	9
Life Span	Above 15 Years
Fire Proof	Class A





(Detachable Container House)



LOADING

20GP | 7-8Units



PACKAGING

40HQ | 17-18Units

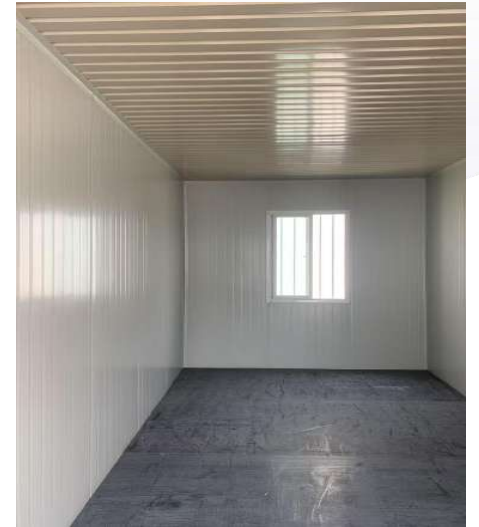
(Detachable Container House)

Project Display



(Detachable Container House)

Project Display



(Detachable Container House)

Project Display



(Detachable Container House)

Project Display



(Detachable Container House)

Project Display



(Detachable Container House)

Project Display



(Detachable Container House)

Project Display



(Detachable Container House)

Project Display



(Detachable Container House)

Project Display



(Detachable Container House)

Project Display



(Detachable Container House)

Project Display



PRODUCTS INTRODUCTION



(Flat-Pack Container House)

Flatpack container housing is a modular construction method that enables rapid assembly of complete residential units. Characterized by its demountable design, this portable structure system offers notable advantages in convenient storage and reusable functionality, making it an ideal solution for temporary or semi-permanent accommodation needs. Beyond conventional installation approaches, the system's versatility allows for direct crane hoisting as an alternative assembly method, significantly enhancing on-site operational efficiency. Key features include:

- ***Rapid Deployment:*** Modular components permit swift on-site assembly compared to traditional construction.
- ***Sustainable Design:*** Reusability and reduced material waste support eco-friendly building practices.
- ***Space Optimization:*** Collapsible structure enables compact storage and transportation.
- ***Adaptable Installation:*** Multiple erection methods including crane-assisted positioning for challenging sites.

(Flat-Pack Container House)

5 Key Advantages/Features

- 1. Convenient transportation, especially suitable for units that frequently change construction sites;**
- 2. Sturdy and durable, all made of steel, with strong shock resistance and deformation resistance;**
- 3. The sealing performance is good, and the strict manufacturing process makes this mobile room have good watertightness;**
- 4. The movable room is based on the standard steel chassis, which can derive many combinations of spaces. Such as meeting rooms, dormitories, kitchens, bathrooms, etc...**



(Flat-Pack Container House)

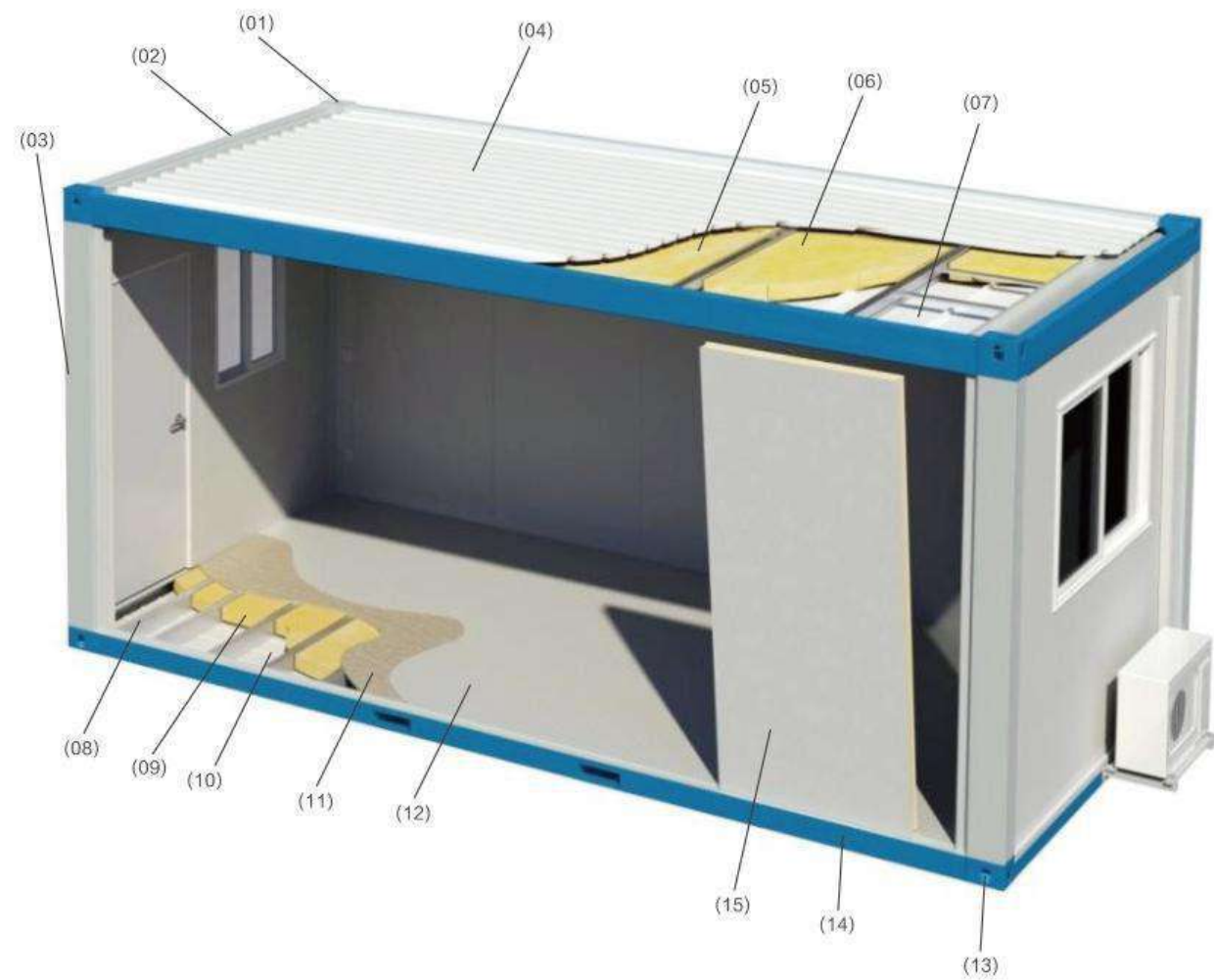
Basic Specifications



Type	Detachable	ExportDimension
Length	6055mm	5950mm
Width	2099mm	2438mm
Height	2896mm	2986mm
Area	18.1m ²	14.5m ²
Weight	2060kg	2045kg
Windproof	Level12 32.7-41.4m/s	Level12 32.7-41.4m/s
Shockproof Level	9	9
Life Span	Above 15 Years	Above 20 Years
Fire Proof	Class A	Class A

(Flat-Pack Container House)

Structure Diagram



NO.	NAME	NO.	NAME
01	Roof Corner Fittings	09	Glass Wool
02	Roof Main Beam	10	Bottom Steel Plate
03	Column	11	Cement Board
04	Steel Tile	12	Plastic flooring
05	Glass Wool	13	Bottom Beam
06	Roof Purlins	14	Bottom Corner Fittings
07	Celling Tile	15	Panels
08	Bottom Purlins		

(Flat-Pack Container House)

Export Loading



PACKAGING



LOADING

(Flat-Pack Container House)

Project Display



(Flat-Pack Container House)

Project Display



(Flat-Pack Container House)

Project Display



(Flat-Pack Container House)

Project Display



PRODUCTS INTRODUCTION



(Foldable Container House)

Foldable container houses represent a portable and reusable building solution. These structural units can be employed independently or assembled through modular configurations to create adaptable living/working spaces with customizable functional zones and floor areas. Featuring standardized components formed from steel strip press-forming technology, the container modules utilize bolt-connected joints that ensure structural simplicity while enabling rapid, efficient installation. This innovative design combines mobility with structural integrity, offering versatile spatial solutions for modern architectural needs.

(Foldable Container House)

5 Key Advantages/Features

1. Fast Installation

Utilize a crane to lift the folding house, then install and tighten the eight bolts to complete assembly. The formed folding box house can be freely relocated and deployed.

2. Ultra-Low Transportation Costs

Vehicle capacity: 6 units per 6.8-meter truck / 23 units per 17.5-meter truck

3. Efficient Storage

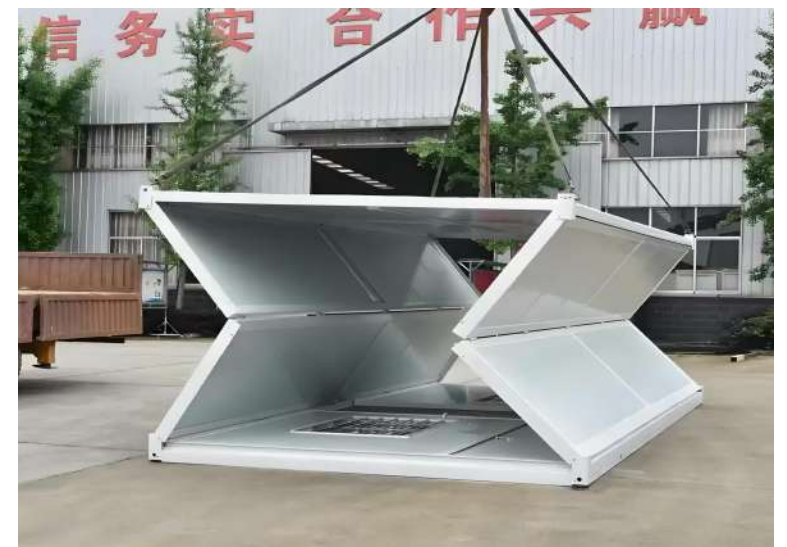
Multi-layer stacking storage minimizes warehouse space requirements.

4. Cost Savings

Reduces temporary construction costs by 66% compared to traditional prefab houses.

5. Extended Service Life

Withstands 500+ folding cycles and maintains structural integrity for over 10 years.



(Foldable Container House)

Export Loading/Transportation



PACKAGING

20GP | 5-6Units



LOADING

40HQ | 10-12Units

(Foldable Container House)

Project Display



(Foldable Container House)

Project Display



PRODUCTS INTRODUCTION



(Flat-Pack Foldable Container House)

Flat-Pack Foldable Container House – A revolutionary hybrid construction system integrating foldable mobility and flat-pack efficiency. Engineered with galvanized light steel frames (1.5mm thickness, ASTM A653 SS240) and patented hinge mechanisms, it achieves:

- ***15-Minute On-Site Assembly*** – Pre-installed drainage networks (UPVC piping, 1:50 gradient) & fold-flat walls
- ***Triple-Layer Weatherproofing*** – IP54-rated panels with thermal-break insulation (-30°C~50°C)
- ***60% Logistics Savings*** – 28 units per 40HC container vs 5 standard units
- ***Seismic & Wind Resilience*** – 8° earthquake resistance & 150km/h wind load certification

Applications: Emergency shelters, mining camps, mobile clinics, pop-up retail.

(Flat-Pack Foldable Container House)

Export Loading/Transportation



LOADING
40HQ-7PCS

(Flat-Pack Foldable Container House)

Project Display



PRODUCTS INTRODUCTION



(Expandable Container House)

The Expandable House System features a modular engineering structure design, combining the advantages of quick disassembly and assembly with the performance standards of permanent buildings. The main frame is made of lightweight and corrosion-resistant alloy, and is matched with a multi-layer composite protection system to achieve excellent waterproof sealing performance and all-weather adaptability. The innovative thermal performance system integrates high-efficiency thermal insulation, sound insulation, and airtightness. Coupled with Class A fireproof building materials and earthquake-resistant reinforcement structures, it ensures stable operation in harsh environments. The appearance offers a variety of customizable color schemes, and the surface treatment process also has the function of resisting UV aging. The overall solution extends the service life beyond 10 years through the optimization of environmentally friendly materials, making it particularly suitable for temporary building scenarios that require rapid deployment and have high requirements for safety and durability.

Core Highlights:

- Balanced design between lightweight portability and permanent performance
- All-weather reliability with integrated multiple protection features
- Sustainable engineering solution with low maintenance costs
- Modular deployment efficiency for immediate use upon installation

(Expandable Container House)

Export Loading/Transportation



PACKAGING



LOADING

40HQ-2UNITS

(Expandable Container House)

Project Display



(Expandable Container House)

Project Display



(Expandable Container House)

Project Display



(Expandable Container House)

Project Display



PRODUCTS INTRODUCTION



(Fabricated House)

Series Prefab House

Light steel frame + fireproof sandwich panels, bolt-assembled structure. Standard size: 3.64×6.16m (customizable). Features:

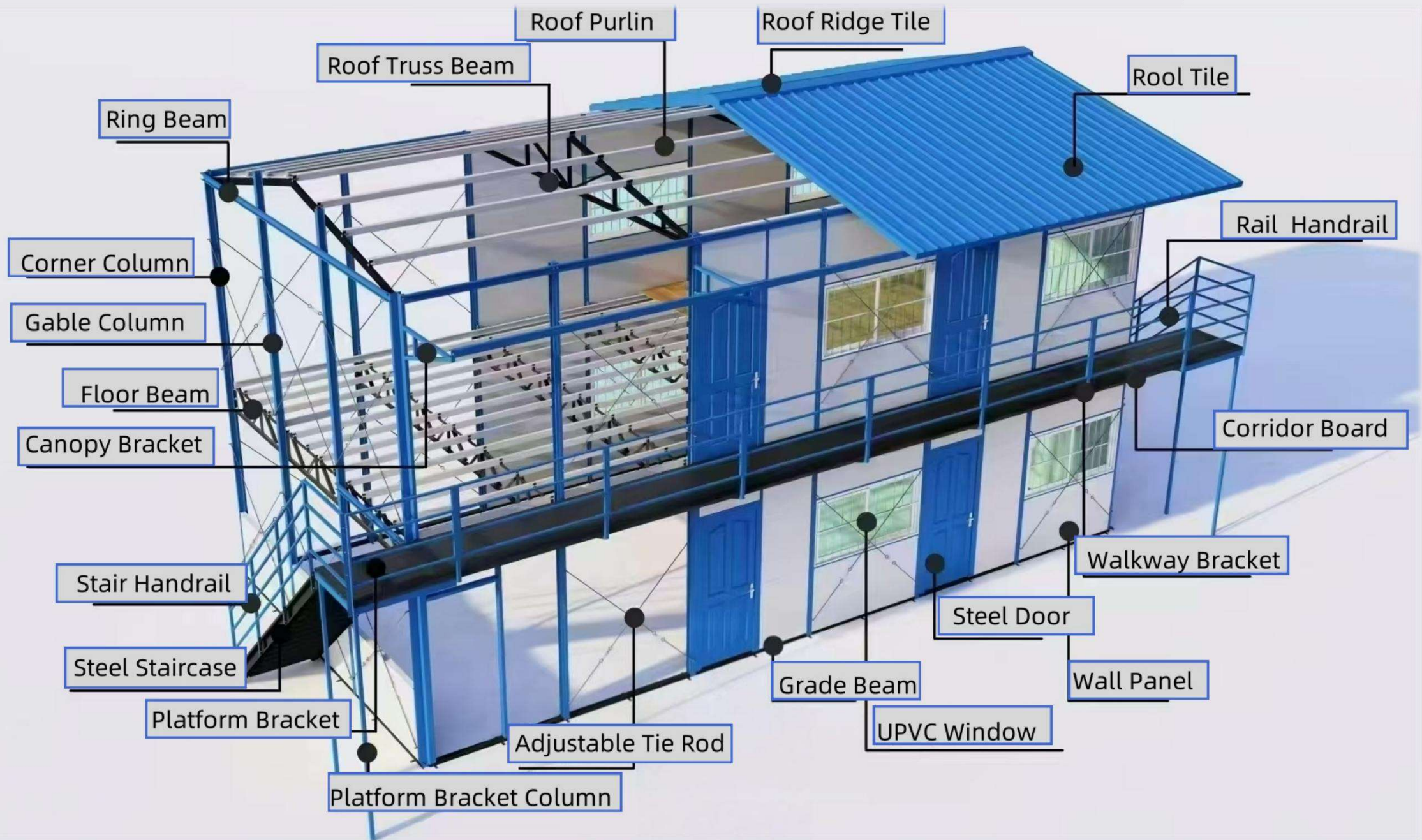
- 60% lighter than concrete
- PVDF anti-corrosion coating
- Rapid deployment (4 units/day)
- CE/ISO certified for construction sites/emergency use

For e-commerce title:

- Series Prefab House
- Bolt-Assembly Light Steel
- CE/ISO Certified
- Custom Sizes

Optimized highlights:

- Technical specs condensed into symbols
- Key certifications prioritized (CE/ISO)
- Critical metrics retained (60% weight reduction)
- Universal unit (meters) for global clarity



(Fabricated House)
Basic Materials

①



Plywood

②



Plastic Steel Window

③



Steel Door

④



MainSteel

⑤



Celling

⑥



RoofingTile

(Fabricated House)
Upgrade Options

①



**Gypsum Board
Ceiling**

②



831 Ceiling

③



MGO Floor

④



Wooden Floor

⑤



Inner Staircase

(Fabricated House)

Project Display



(Fabricated House)

Project Display



(Container Public Toilet)

Project Display



(Prefabricated Toilet)

Project Display



(Prefabricated Toilet)

Project Display



ROCK WOOL COLOR STEEL SANDWICH PANEL



EPS SANDWICH PANEL



SILICON COLOR STEEL SANDWICH PANEL



HOLLOW GLASS MAGNESIUM PANEL



MAGNESIUM SULFIDE SANDWICH PANEL



POLYURETHANE COLOR STEEL SANDWICH PANEL