

Prefab Houses Catalog





Introduction of Detachable Container House

The detachable container house is a mobile and reusable construction product. Modular design and factory production are adopted, with the container as the basic unit, which can be used alone or through different combinations of horizontal and vertical directions to form a spacious use space, and the vertical direction can be stacked. The unit structure is a standard component welded with special section steel, and the containers are connected by bolts. The structure is simple and the installation is convenient and quick.

it can be used for many purposes, such as office, accommodation, conference rooms, field exploration office, dormitory etc.



Features of Detachable Container House



1. Convenient transportation, especially suitable for units that frequently change construction sites;
2. Sturdy and durable, all made of steel, with strong shock resistance and deformation resistance;
3. The sealing performance is good, and the strict manufacturing process makes this mobile room have good water tightness;
4. Flexible and customizable, which can derive many combination spaces. Such as meeting rooms, dormitories, kitchens, bathrooms, etc.
5. Easy disassembly and assembly, good performance, stable and firm, good shockproof performance, waterproof, fireproof and anti-corrosion, light weight.

Selection of Colors

Panels



Black



Wood



White



Grass
Green



Sky Blue



Light
Yellow

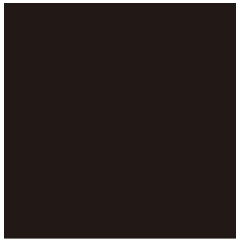
Frame



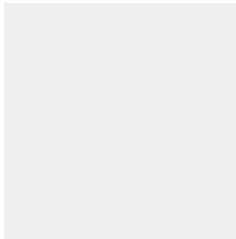
Royal Blue



Red



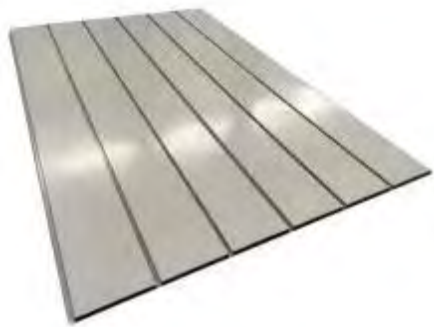
Black



White

MOQ 30 Units for Customized Colors

Customization



831 Ceiling Sheet



Solid Wood Skirting



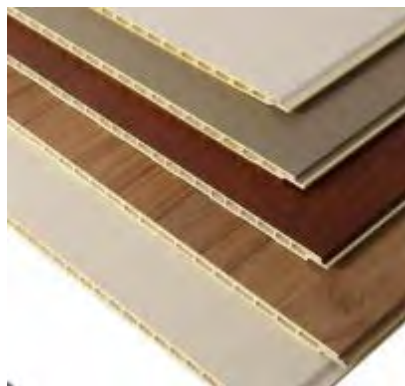
SPC Floor



PVC Leather Floor



Wallpaper



Integrated wall panel



Metal carved board



Basic Specifications of Detachable Container House

Type	Length	Width	Height	Area	Weight
Detachable	5950mm	3000mm	2800mm	17.85m²	1167kg



Windproof | Level12 32.7-41.4m/s Anti-Seismic | 9

Life Span | Above 15 Years Fire Proof | Class A

Structure Diagram of Detachable Container House



Loading | Detachable Container House



Packaging

20GP | 7-8Units

40HQ | 17-18Units









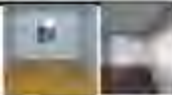



Loading

Material List

Material Specifications of Detachable Container House

1	Main Structure	Column	2.15 mm cold rolled steel profile			4 pcs
2		Roof Beam	1.95mm cold formed cross members			1 set
3		bottom Beam	1.95 mm cold rolled steel profiles			1 set
4		Roof square tube	50*50*1.2mm ; 40*80*1.2cm ; 40*60*1.2mm			11 piece
5		Bottom square tube	80*80*1.2mm ; 40*80*1.2mm			9 piece
6		Roof Corner Fitting	W245*L245*H245mm ,thickness size :3.5mm			4 pcs/set
7		Floor Corner Fitting	W245*L245*H245mm ,thickness size :3.5mm			4 pcs/set
8	Wall Panel	Sandwich Panel	50mm EPS/rockwool panles, size is 950*2500mm*0.25mm steel sheets			18pcs/set
9	Supporting channel bar	Galvanized steel	2 (pcs) :L2800mm*W90*H30*T0.9mm 2(pcs):L5780mm*W90*H30*T 0.9mm			4pcs/set
10	Enhance Beam	Door frame beam	Galvanized square tube steel L2560mm*W20*H40*T1mm			1 pc
11		Wind-proof beam	Bake painting steel tube steel L2480mm*W40*H60*T1.2mm			2pcs

12	Roof insulation	Glass wool	14kg/m ² , thickness size 100mm				1 roll/set
13	Roof tile	steel tile	L2970*W1060*T0.34mm				6pcs/set
14	Ceiling tile	steel tile	L2790*W1060*T0.18mm				6pcs/set
15	Window	Single open aluminum alloy	Size:925*1200mm				2 pcs/set
16	Corner trimming	Galvanized aluminum	L5700*W40*H40*T0.25mm (2pcs) L2700*W40*H40*T0.25mm (2pcs) L2500*W40*H40*T0.25mm (4pcs)				8pcs/set
17	Door	steel	size: 950*2070mm				1 pcs/set
18	Floor	floor panel	W1147*L2800mm*H15mm MGO fireproof board				5pcs
19	Accessories		Screw Bolt, Nail, steel bending Trims				1 set

Detachable Container House Project Display



Detachable Container House | Project Display

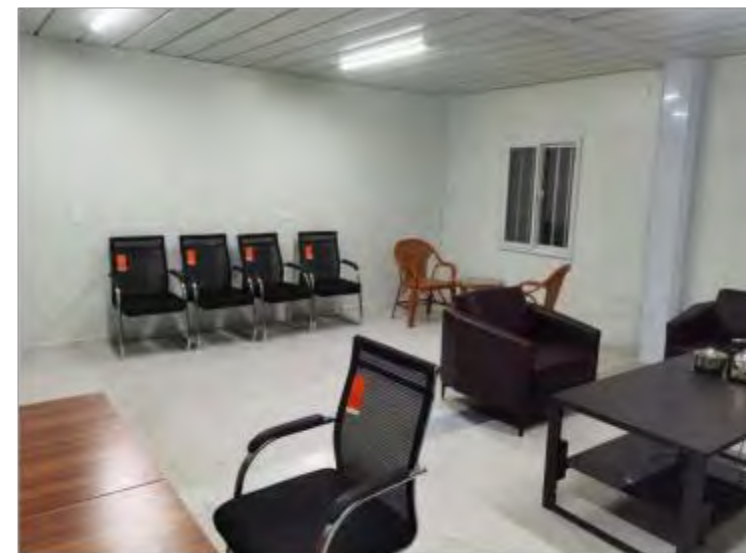
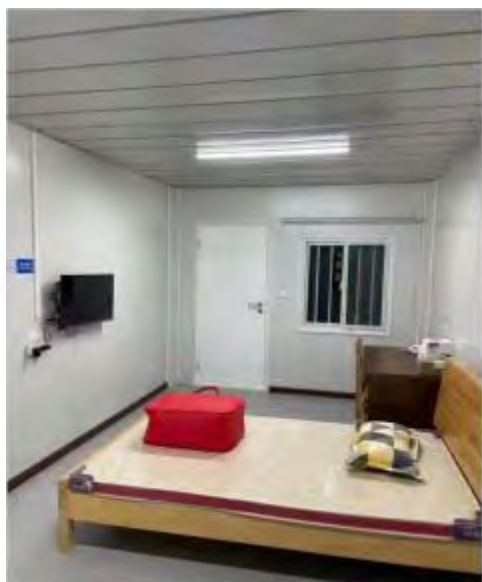




Detachable Container House | Project Display



Detachable Container House Project Display





Introduction of Foldable Container House

The folding box house is a movable and reusable building product. It can be used alone or combined into living/working spaces with different functions and areas. The box unit structure is a standard component pressed by steel belts. The boxes are connected by bolts. The structure is simple and the installation is convenient and quick.

It is widely used in temporary offices and dormitories on construction sites, and housing for earthquake relief and other fields.



Features of Foldable Container House

1. Fast installation: Use a crane to lift the folding house, and then install and tighten the eight bolts, and a folding box house can be formed, which can be moved and used at will
2. The transportation cost is greatly reduced: 6 sets can be loaded on a 6.8-meter car; 23 sets can be loaded on a 17.5-meter car
3. Storage cost: a set of places can be stacked and stored in multiple layers.
4. Cost of use: Compared with traditional prefab houses, it saves 2/3 of temporary construction costs.
5. Use cycle: Repeated folding 500 times, the service life can reach more than 10 years.

Export Loading

Transportation of Foldable House




20GP | 5-6 20GP | 5-6Units




40HQ | 10-14 40HQ | 10-12Units



Packaging

Loading

Number	Name	Description	Size	Qty	Unit	
—	型式一 (Form 1)	(Standard container)	External: 5860mm (L) *2490mm (W) *2530m (H) Internal: 5700mm (L) *2350mm (W) *2410mm (H) Folded: 5860mm (L) *2490mm (W) *320mm (H)	1	Unit	
1	(Frame)	(Top girder)	galvalized Steel tube 40mm*60mm*1.5mm+Steel tube40mm*60mm*1.5mm	2	set	
		(Bottom girder)	galvalized Steel tube 50mm*100mm*1.5mm+40mm*60mm*1.5mm	2	set	
		(Top beam)	P galvalized Steel tube 40mm*80mm*1.5mm	2	pc	
		(Top sub-beam)	galvalized Steel tube 40mm*60mm*1.5mm	1	pc	
		(Sidewall frame)	galvalized Steel tube 40mm*60mm*1.5+galvalized Steel tube 50mm*100mm*1.5mm	4对	pc	
		(Bottom crossbeam)	galvalized Steel tube 40mm*60mm*1.5mm	14	pc	
		(Cast steel butt joint Corner Fitting)	steel plate160mm*120mm*8mm	8	pc	
		Hinger	High-strength galvanized hinge85mm*115mm*3mm (Shaft column304stainless steel)	36	pc	
		(Integral frame protective coating)	electrostatic spraying	1	pc	

2	(Top of container)	(External roof)	50mm steel sandwich panel	6	pc	
		(Internal ceiling)	50mm steel sandwich panel		pc	
		Wall panel	density 80kg/m³ rockwool or 14kg/M³ EPS		m²	
3	(Floor)	MGO (asbestos free)	18mm	5	pc	
4	Wall panel	side wall	0.3mm彩钢板/50mm/80kg/m3 rockwool or 14kg/m³ EPS	8	pc	
		Front wall and back wall	0.3mm彩钢板/50mm/80kg/m3 rockwool or 14kg/m³ EPS	6	pc	

5	(Window)	PVC frame	930mm*930mm with fly screen	2	pc	
6	(Door)	High-end container special steel anti-theft door	970mm*1970mm	1	pc	
7	(Electrical system)	(circuit protector)		1	pc	
		Industrial socket,will change according to different area		1	pc	
		(Single tube LED light)		1	pc	
		<Special socket for air conditioner (3 holes)>		1	pc	
		(Light switch)		1	pc	





Introduction of Flat- Pack Container House

Flat pack container house is a kind of building mode that can quickly assemble a complete set of houses. Its main features are easy demolition, convenient storage, and a temporary house that can be reused many times. In addition to some more mainstream methods in the installation process of the packing box house, there is also the possibility of direct hoisting.



Features of Flat- Pack Container House

1. Convenient transportation, especially suitable for units that frequently change construction sites;
2. Sturdy and durable, all made of steel, with strong shock resistance and deformation resistance;
3. The sealing performance is good, and the strict manufacturing process makes this mobile room have good water tightness;
4. The movable room is based on the standard steel chassis which can derive many combination spaces. Such as meeting rooms, dormitories, kitchens, bathrooms, etc.



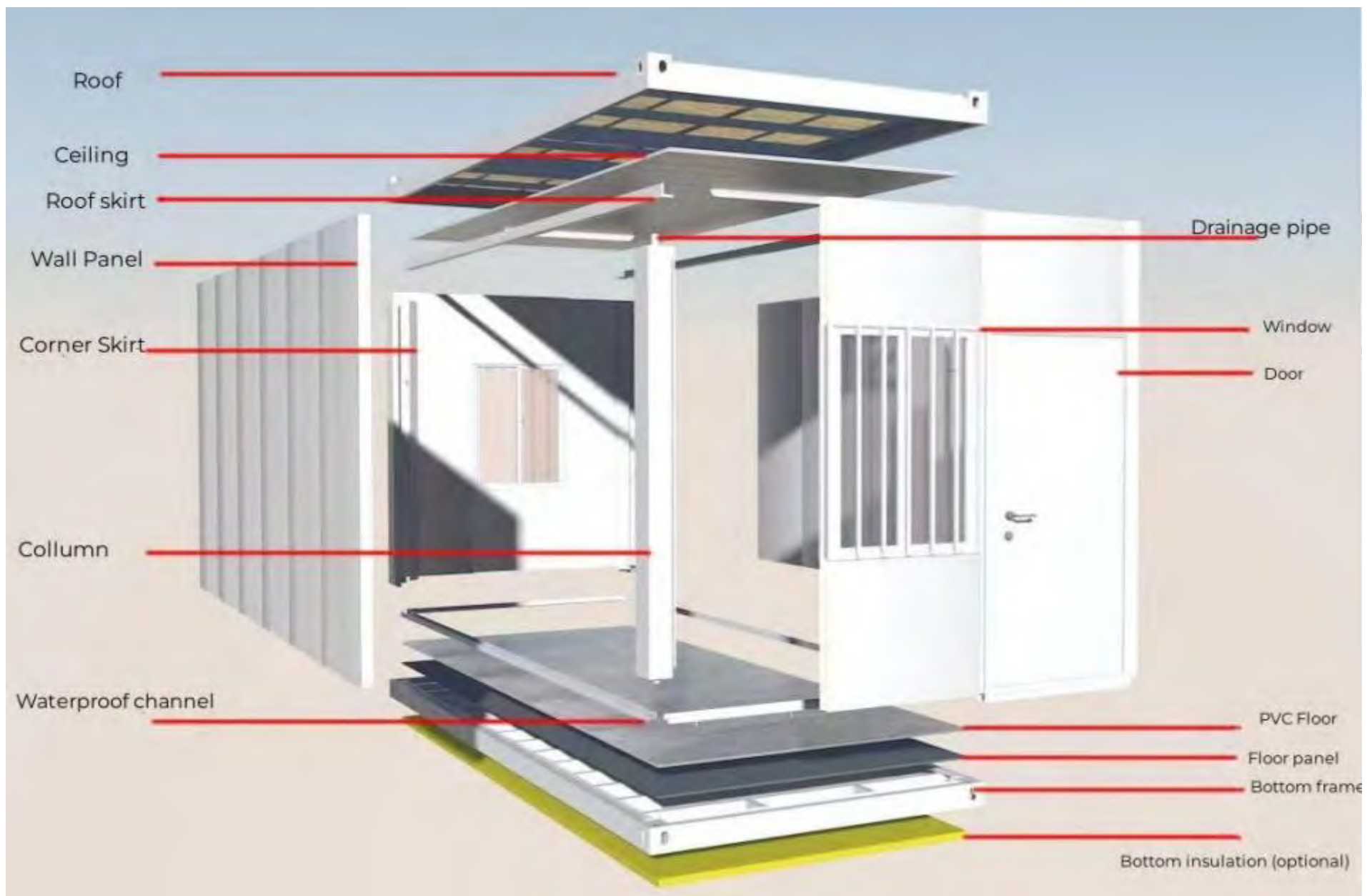
Specifications of Flat- Pack Container House

Type	Length	Width	Height	Area	Weight
Domestic Dimension	6055mm	2990mm	2896mm	18.1m²	2060kg
Export Dimension	5950mm	2438mm	2896mm	14.5m²	2045kg

The structure adopts a steel frame structure system, the floor live load is 2.0KN/m², the roof

live load is 0.5KN/m², the wind load is 0.6KN/m², the seismic intensity is 8 degrees, and the structural design period is 20 years





Domestic Loading

| Loading of Flat -Pack



17.5M Truck | 12units

Export Loading

Loading of Flat -Pack

40HQ | 6Units



Packaging



Loading



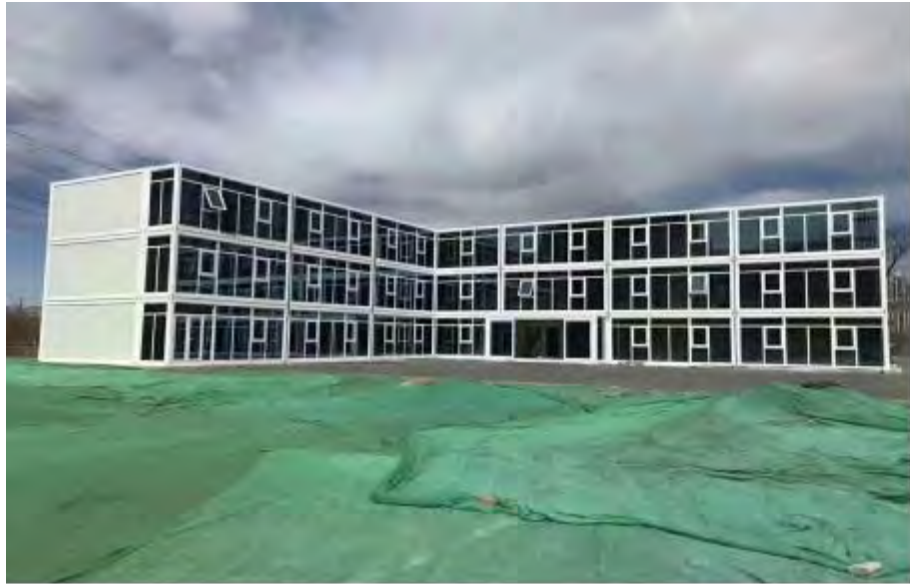
Flat-Pack Container | Project Display



Flat-Pack Container | Project Display



Flat-Pack Container | Project Display







Flat-pack foldable container house

Flat-pack foldable container house is a new type of construction product. Combining the best features of folding boxes and flat-pack boxes, the disassembly and assembly of folding boxes is quick, and the drainage system of flat-pack boxes is more perfect.

The overall structure is still made of light steel to ensure longevity, wind resistance and earthquake resistance.




Loading

Flat-pack Foldable Container House

40HQ- 8PCS



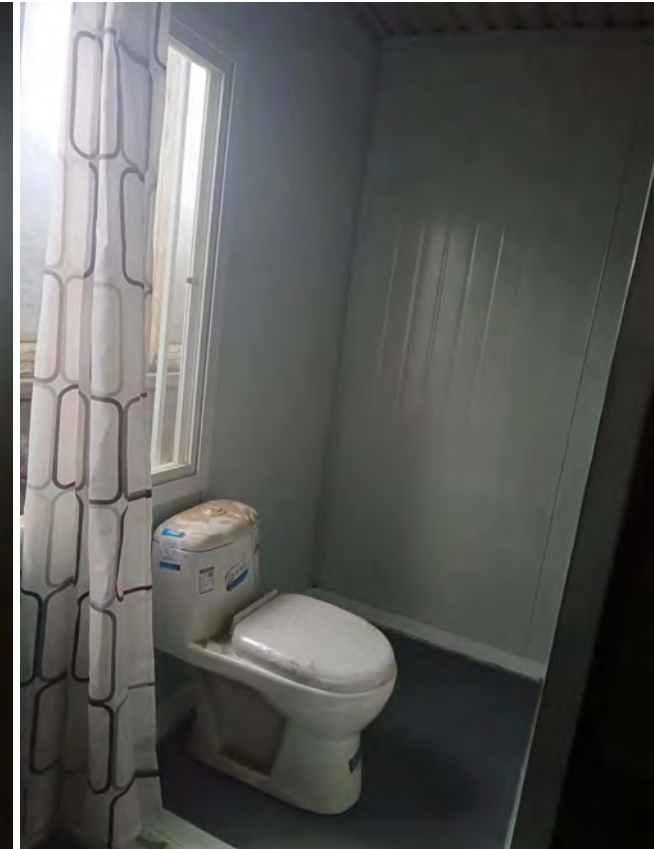
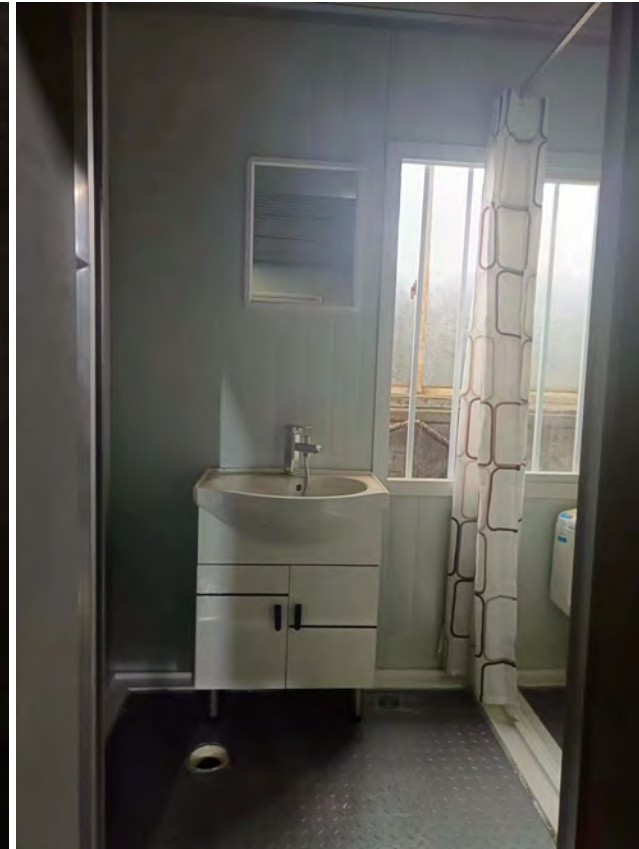
Loading

Name		5800*2438*2530 5630*2280*2200		Name	set	Qty	Remark
Main frame 2.00mm	Roof frame	2.00mm galvanized profile beam , galvanized amount 80g/m², width 170mm length 5633mm			pc	2.00	
		2.00mm galvanized profile beam, galvanized amount 80g/m², width 170mm length 5633mm			pc	2.00	
		Galvanized C80*1.2mm profile, galvanized amount 80g/m²			pc	7.00	
		30*30*1.0mm galvalized purlins, galvanized amount 80g/m²,			pc	2.00	
	bottom frame	2.00 mm galvalized beam, galvanized amount 80g/m², width 160mm,length 5633mm			pc	2.00	
		2.00 mm galvalized beam, galvanized amount 80g/m², width 160,length 5633mm			pc	2.00	
		plumbing steel channel, 5633mm			pc	2.00	
		plumbing steel channel, 2688mm			pc	2.00	
		galvalized 50*100*1.2mm purlins, galvanized amount 80g/m²			pc	9.00	
		plumbing steel channel, 5630mm			pc	2.00	
		plumbing steel channel, 2280mm			pc	2.00	
	Collumn	2.00 mm galvalized collumn, galvanized amount 80g/m² 210mm, 150mm height			pc	4.00	
		connector .0mm, galvanized amount 80g/m²			pc	8.00	
		L shape strenthening part			pc	8.00	
	Corner connector	7mm corner connector, galvanized amount 80g/m² height 210mm width170mm			pc	4.00	
		7mmcorner connector , galvanized amount 80g/m² height 165mm width 150			pc	4.00	
	Color	Bake painted			set	1.00	
	Bolts	galvalized hexagon socket screw			pc	48.00	

	Roof	Roof	0.25mm steel sheet, 360 degree fitting,with special warter proof	set	1.00	
	Plumbin pipe	Plumbin pipe	50mm pvc pipe	pc	4.00	
	Ceiling insulation	Moisture proof	PE moisture proof 1.0mm	set	1.00	
		75mm glass wool	75mm glasswool roll1 4kg/m³			
	Ceiling	Ceiling	0.25mm thick, 831 type	set	1.00	
	Floor	cement floor	18mm thick cement fiber floor, 1177*2820mm	pc	5.00	
	PVC	PVC	1.6mm, PVC floor	set	1.00	
	Skirting	Skirting	steel skirting	pc	4.00	
	Door	Steel door	925*1970	pc	1.00	
	Window	Single layer glass	925*1130	pc	2.00	
	Accessories	Accessories	screws,glue	pc	1.00	
	Electrical system	Electrical system	industrial socket 32A (1set) Distributor J-8 (1个), leakage breaker (32A) AC switch 32A (1个), 2 normal sockets, switch 1, 2 strip led light。 Wire: main wire 4sqm AC 4sqm socket 2.5 sqm light sqm 1.5 sqm	set	1.00	
	wall panel	0.25mm steel	50mm steel sandwich panel, steel0.25/0.25mm 70kg/m³	set	1.00	

Flat-pack Foldable Container House | Project Display

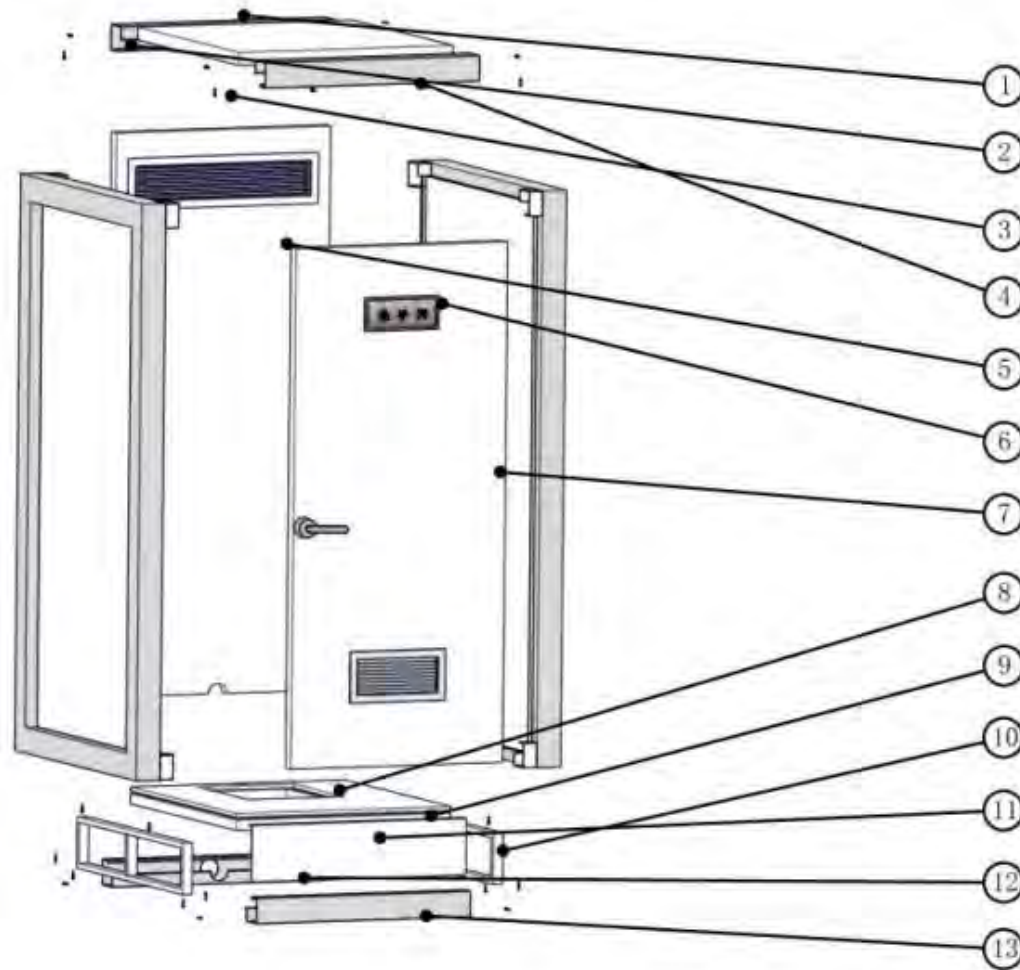






Material List

Prefabricated Outdoor Toilet



- 1: Roof Panel
- 2: Rear Top Beam
- 3: Self-tapping Screws
- 4: Front Top Beam
- 5: Rear Panel
- 6: Side Panel
- 7: Swing Door
- 8: Skid Plate
- 9: Chassis Bracket
- 10: Chassis Outriggers
- 11: Access Panel
- 12: Rear Drainage Beam
- 13: Front Bottom Beam

Prefabricated Toilet



Container Public Toilet | Project Display





Introduction of Expandable House

Expandable house is easy to disassemble, superior performance, stable and firm, tight seal, heat insulation, waterproof structure, lake corrosion resistance, beautiful fire prevention, various colors, waterproof and fireproof, anti-corrosion and shockproof and other good performances, the overall weight is light, the service life can reach more than 10 years.

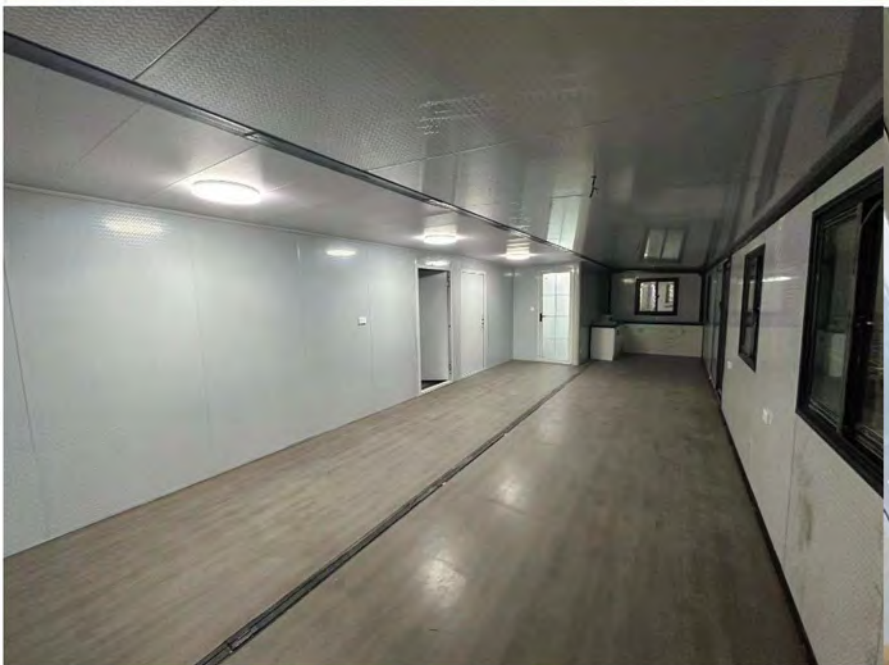
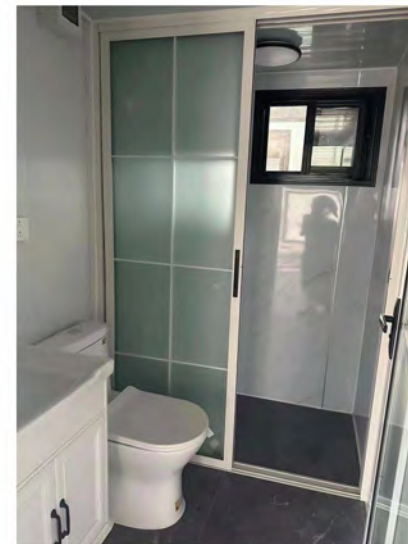
The structure is simple and the installation is convenient and quick, It is widely used in leisure villas, vacation houses, temporary offices and resettlement.











Export Loading

Transportation of Expandable House

40HQ | 2Units



Packaging



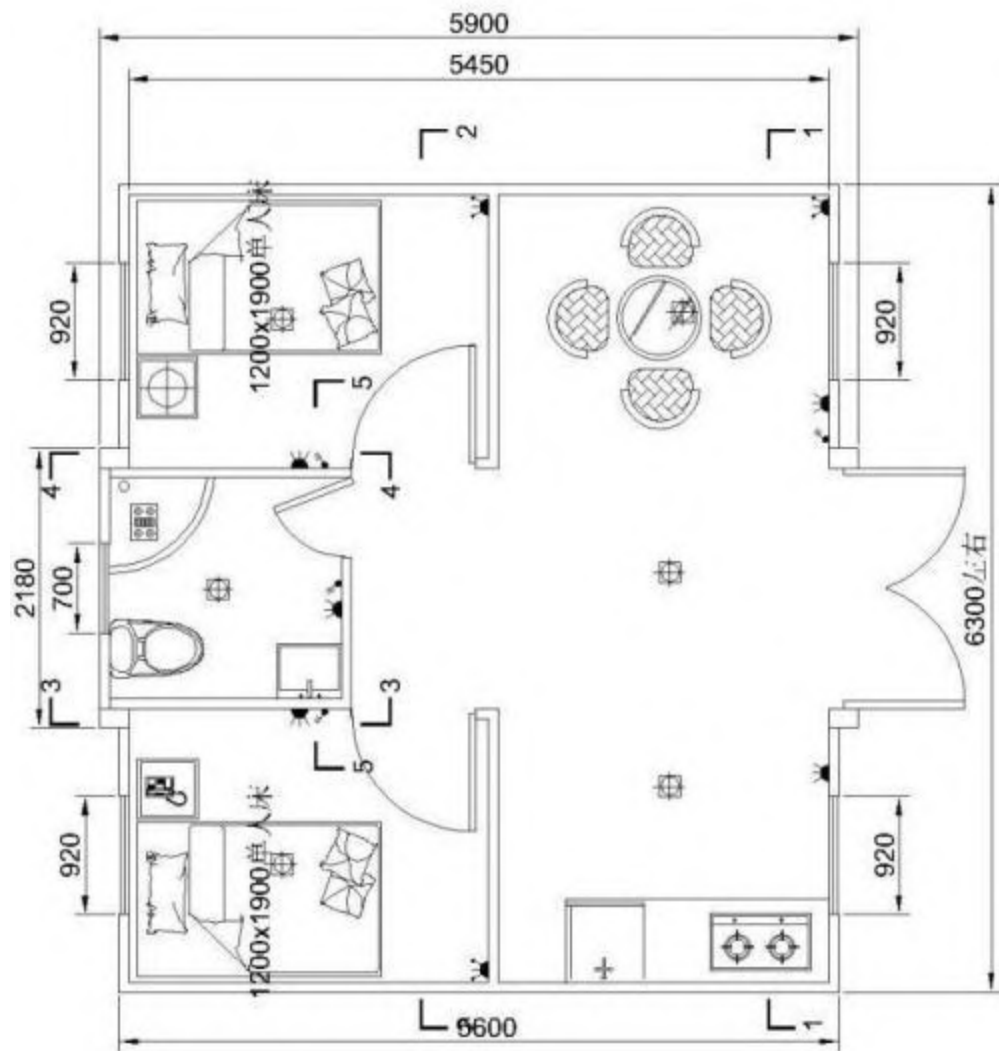
Loading

Material List | Expandable House

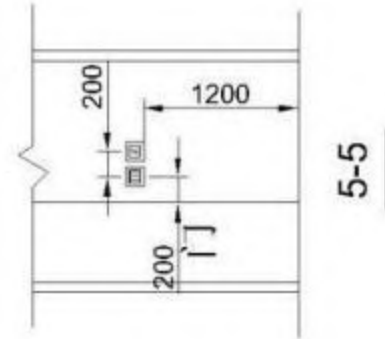
Feature	External Dimension(mm)	6320*5900*2480(20尺) 11800*6360*2480 (40尺)
	Internal Dimension(mm)	6160*5560*2240 (20尺) 11640*6020*2240 (40尺)
	Folded Dimension(mm)	2200*5900*2480
	Weight(kg)	2200
Structure	Middle Beam	T2.5mmQ235B
	Bottom Beam	T2.5mmQ235B
	End Side Beam	t1.5mmQ235B
	Column	T2.5mmQ235B
	Side Wall Frame	t1.5mmQ235B
	Subframe	t1.5mmQ235B
	Hanger	t4mmQ235B
	Hinge	13mm Galvanized Hinge
	Coating	Electrostatic Spray/ Straight White Plastic Powder
	Middle Cabinet Top and Bottom	80*100
	Side Cabinet Top and Bottom	40*60 t =1.5
Top	Roof	t0.5mm Galvanized sheet
	Celling	831 Celling
Panel	Middle Roof Insulation	T50mm Glass Wool (Side Roof 50 board)

Panel	MiddleRoof Insulation	T50mm Glass Wool (Side Roof 50 board)
	Side Walls,Front and Rear Wall Panels	t50mm Glass Wool Color Steel Plate or t50mm EPS Board
	Internal Partition	t50mm EPS Panel
	Bathroom	1700*1500mm
Floor	Middle Floor	MGO Fire-Proof Floor 15mm
	gide Floor	Bamboo Floor
Electric System	Electrical wiring is installed in strict accordance with moisture- proof specifications, and all electrical products must comply with CE certification. Connect the circuit according to the circuit engineering specification, indoor: 2 LED lamps, 2 ceiling lamps, 3 five- hole single-opening sockets, 1 single- opening socket, 3 ten- hole sockets, 1 air- conditioning socket, 1 2.0 A leakage protector. Voltage 220V, 50HZ	
Door	2 Ordinary Anti-theft Door	
Window	4 Plastic steel single glass sliding window (920*1120)	
Warranty	One Year	

Layout of Expandable House(20ft)

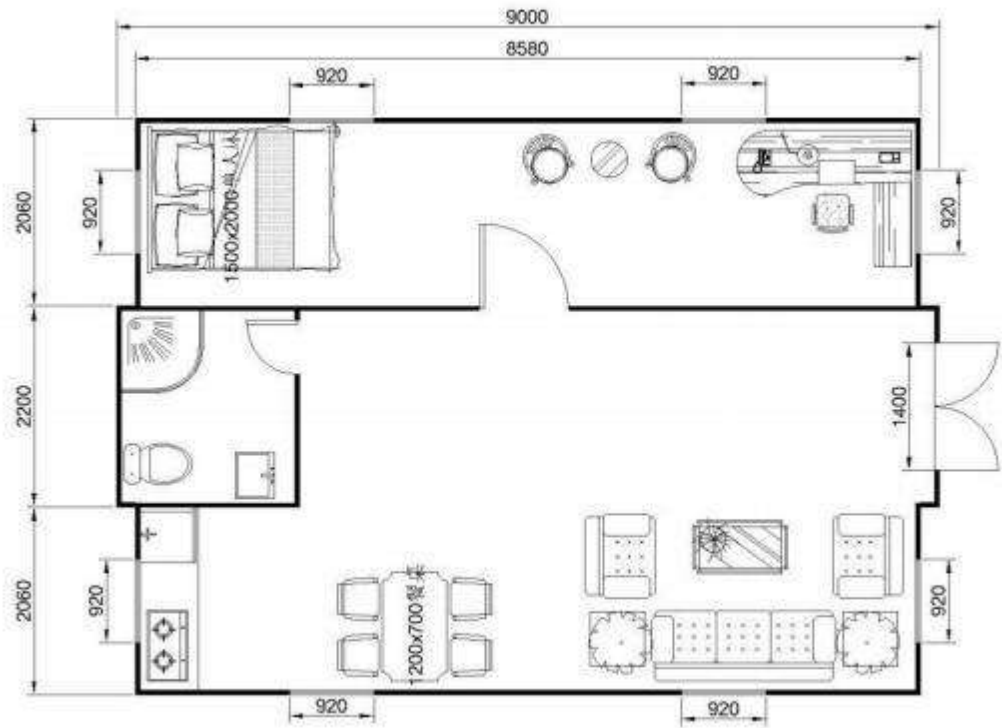


Circuit Diagram of 20 ft Expandable House
(2 Bedroom 1 Livingroom 1 Bathroom)

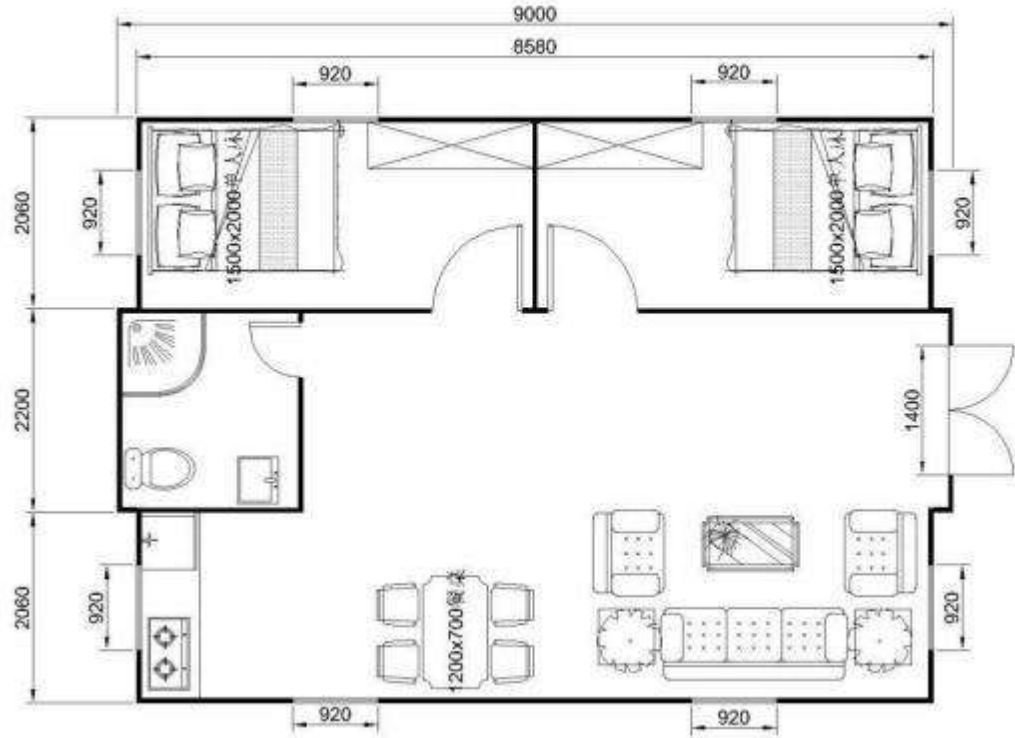


5-5

Layout of Expandable House(30ft)

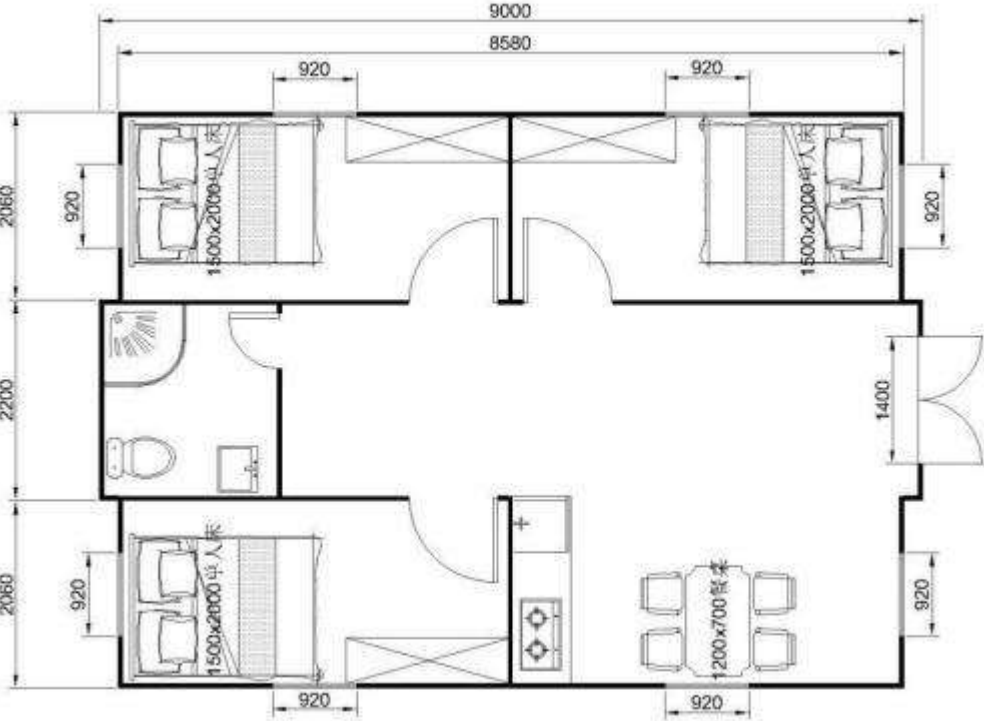


30 ft Expandable House(1 Bedroom
1 Livingroom 1 Bathroom)

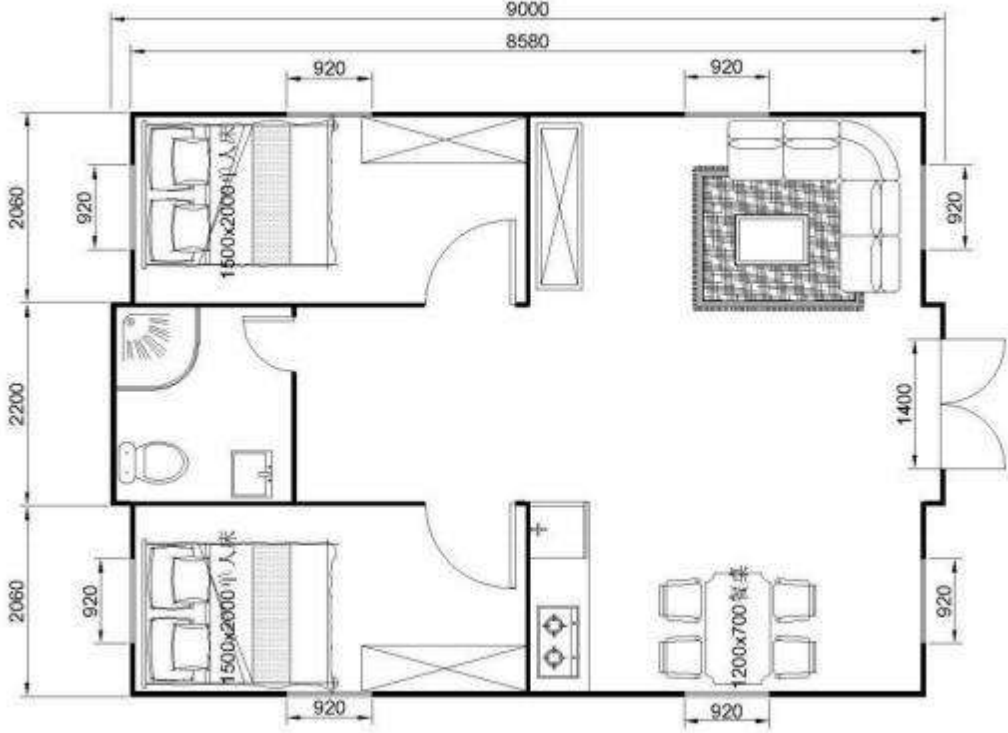


30 ft Expandable House(2 Bedroom
1 Livingroom 1 Bathroom)

Layout of Expandable House(30ft)

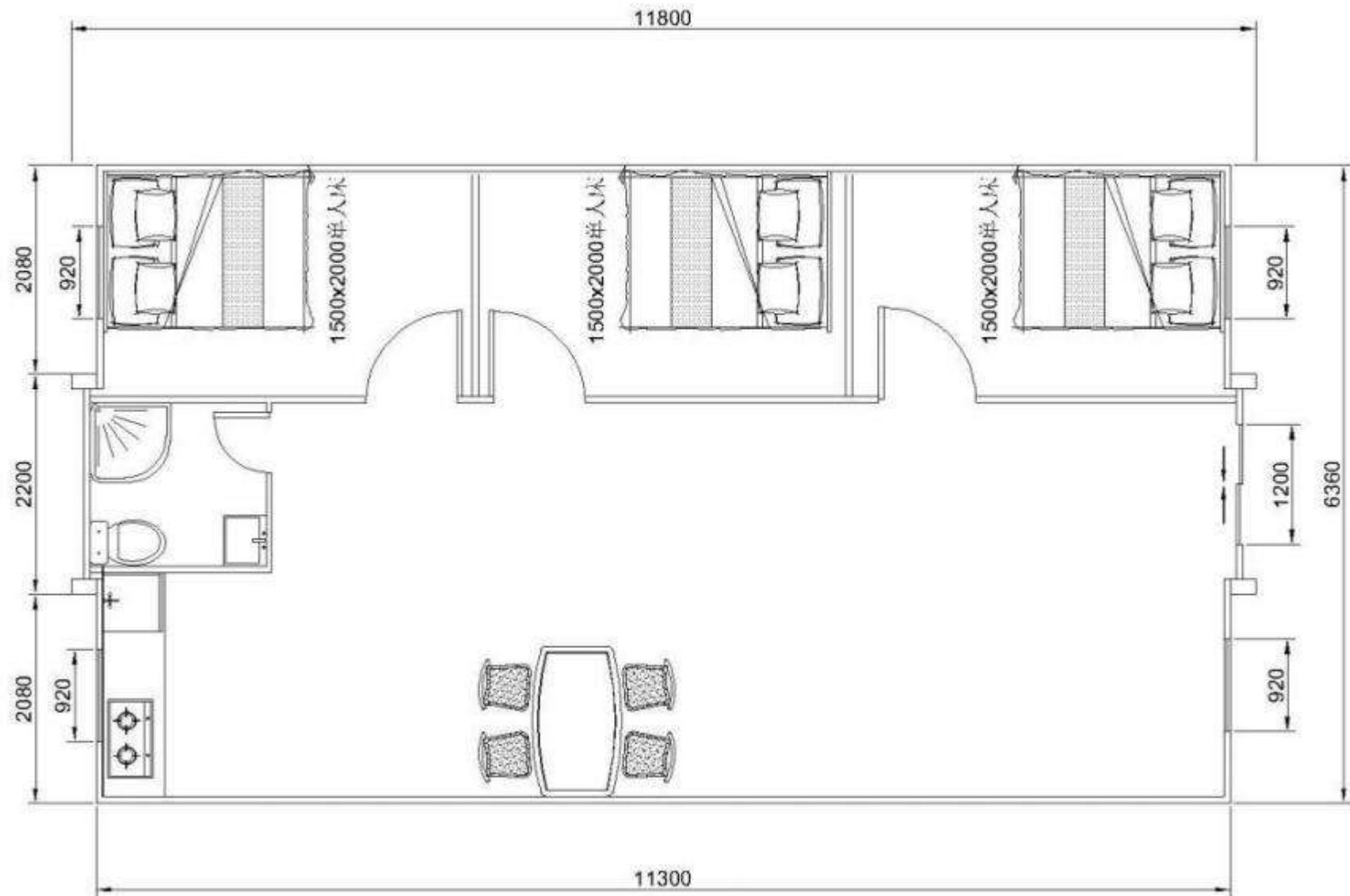


3 0 ft Expandable House(3 Bedroom
1 Livingroom 1 Bathroom)



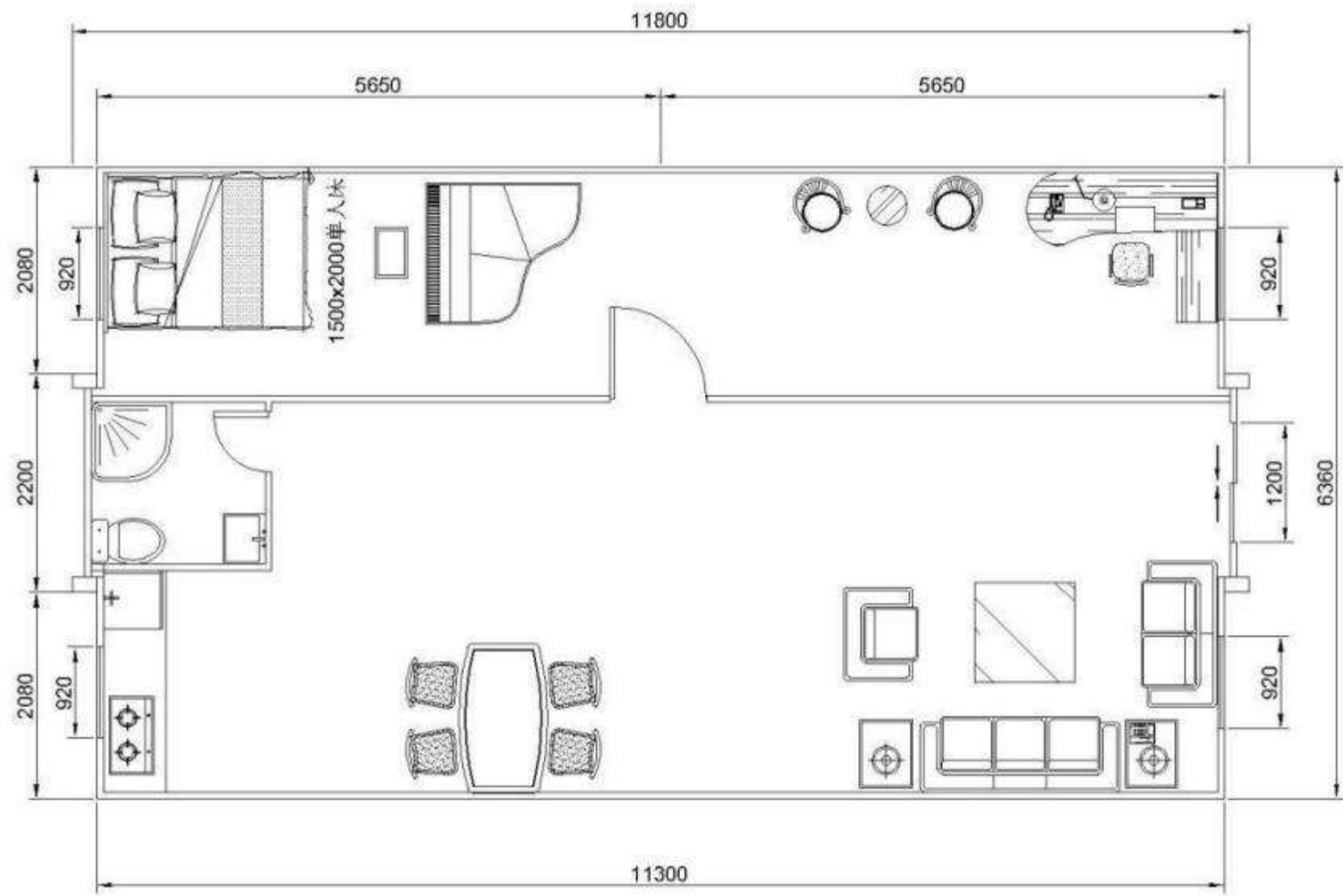
3 0 ft Expandable House(2 Bedroom
1 Livingroom 1 Bathroom)

Layout of Expandable House(40ft)



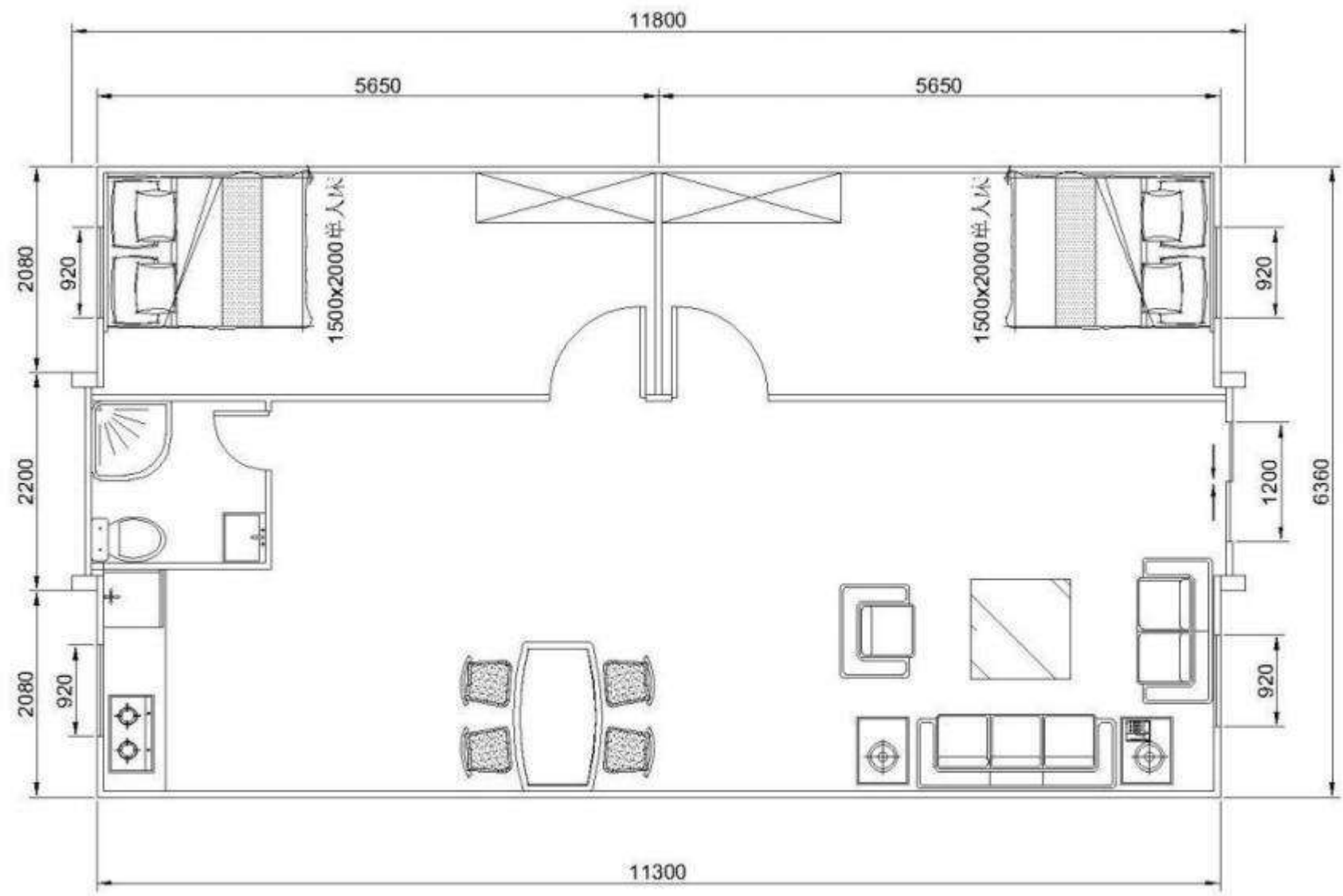
4 0 ft Expandable House(3 Bedroom
1 Livingroom 1 Bathroom)

Layout of Expandable House(40ft)



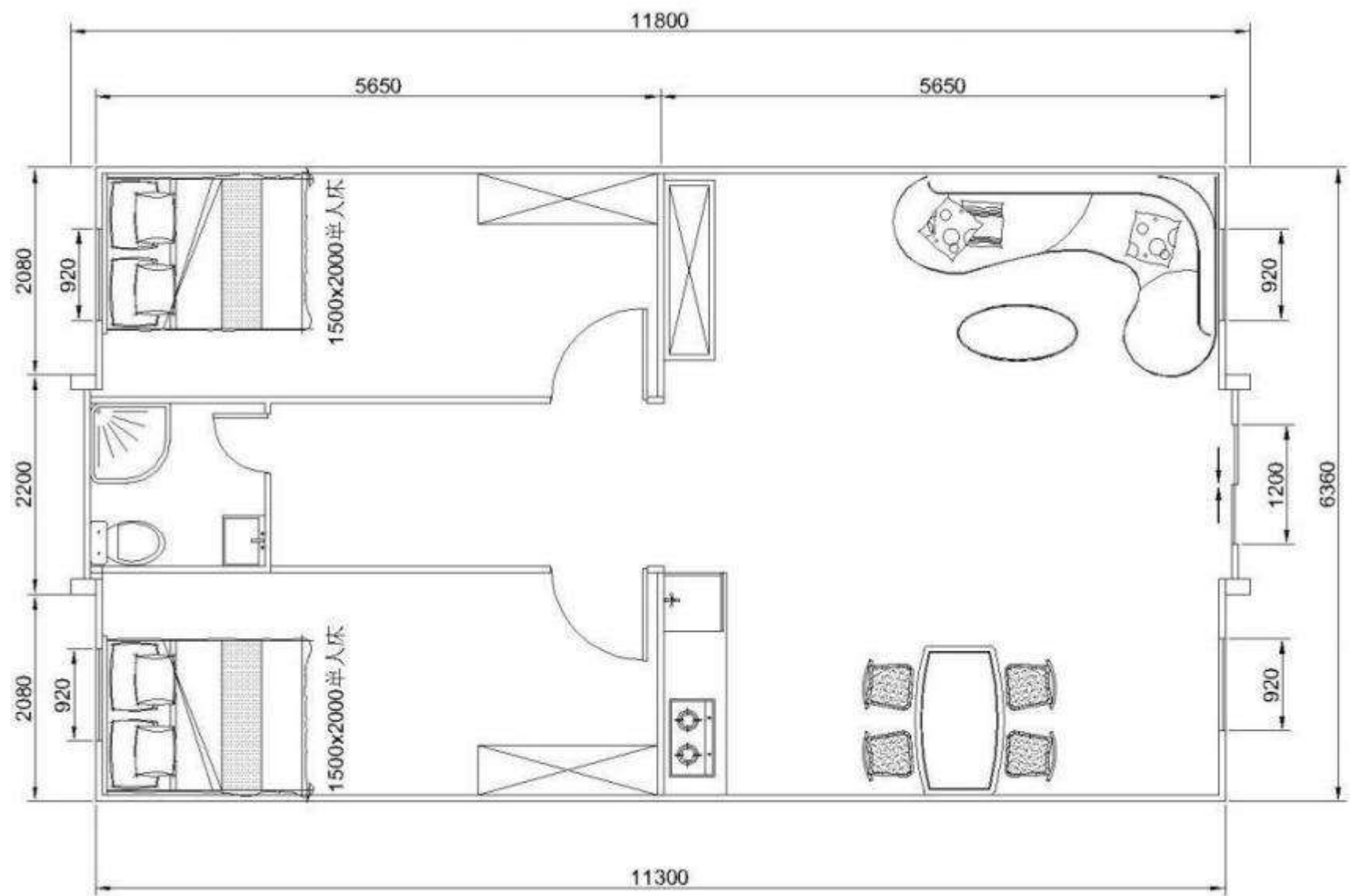
40 ft Expandable House(1 Bedroom
1 Livingroom 1 Bathroom)

Layout of Expandable House(40ft)



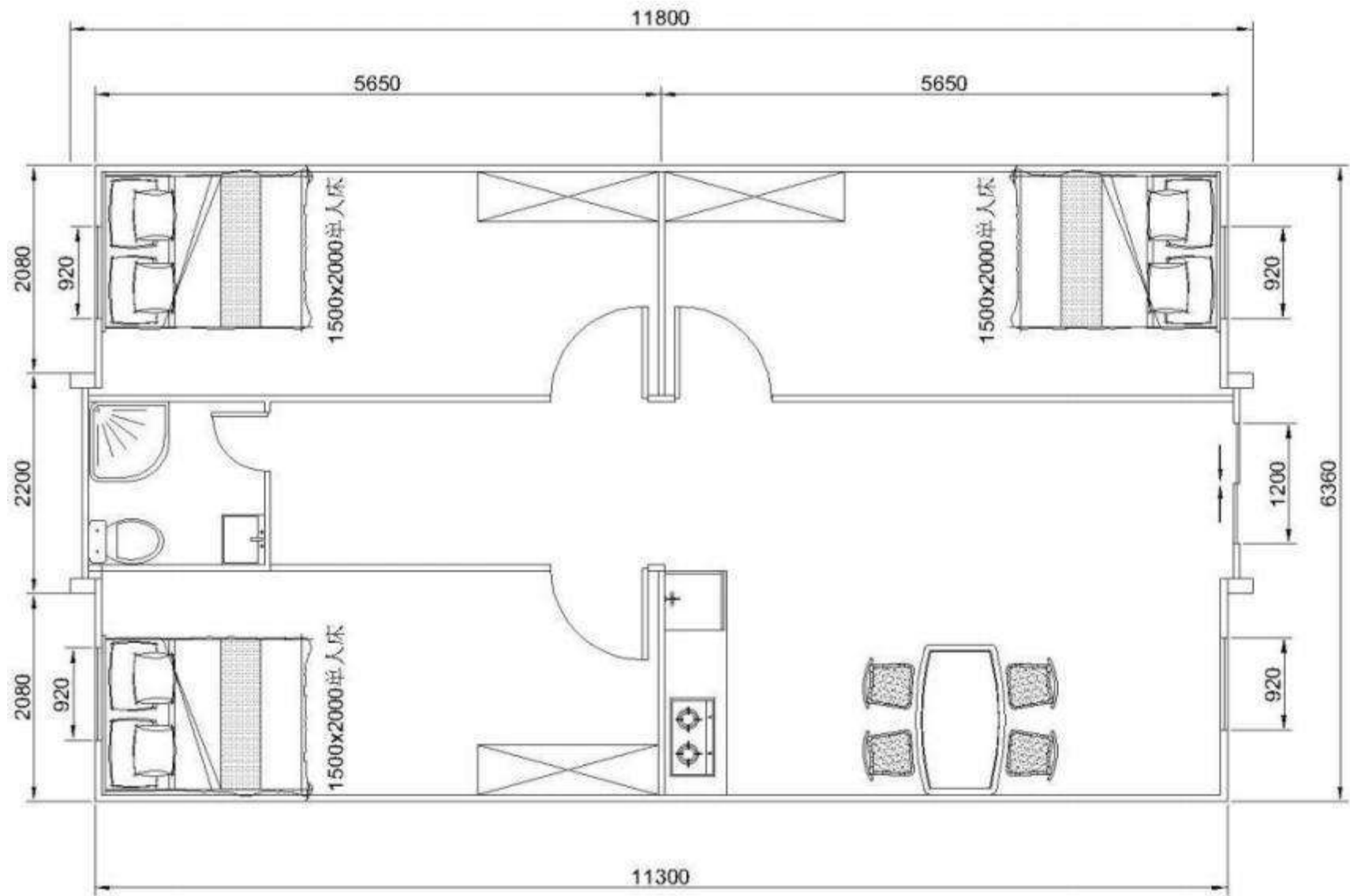
4 0 ft Expandable House(2 Bedroom
1 Livingroom 1 Bathroom)

Layout of Expandable House(40ft)



4 0 ft Expandable House(2 Bedroom
1 Livingroom 1 Bathroom)

Layout of Expandable House(40ft)



4 0 ft Expandable House(3 Bedroom
1 Livingroom 1 Bathroom)



Introduction of Corrugated Container House

The corrugated container house has strong and durable features, all of which are assembled with steel materials, and use a seamless welding method, which has the functions of anti-corrosion, waterproof, windproof, electricity-proof, fire-proof and earthquake-resistant.

In addition to the above advantages, the corrugated container house also has the advantage of easy disassembly and assembly. It can be directly transported to the desired destination by means of a crane, and then hoisted on site and directly moved in, and even the daily necessities inside can be carried with the crane. take away.



Feature of Corrugated Container House

1. Convenient and fast: fast and convenient to move, flexible combination. Hoisting on the same day, check-in on the same day; it is convenient to change the site, use the hoisting truck to directly move the entire container to any position you want at any time.
2. Safety: Steel frame structure, Class A fire prevention, heat insulation, windproof, shockproof, moisture-proof, waterproof, leakage-proof, environmental protection and safety.
3. Durability: The outer wall of the steel plate is corrosion-resistant, acid-resistant, no rust or cracks, and the service life is more than 10 years.
4. Sound insulation and heat insulation: it adopts air-break heat design, which has good sound insulation and heat insulation.
5. Aesthetics: It can be designed in various shapes, the outer wall has many colors, and the appearance is bright and beautiful.
6. Strong load-bearing capacity, can be stacked together for use.

Analysis Diagram | Corrugated Container



Standard Dimension: 6*3*2.8M

Material List | Corrugated Container



Corrugated Container			
No.	Materials	Specifications	Remark
1	Bottom	12# Galvanized Channel Steel	45kg
2	Column	100*100 Galvanized Tube	t=2.0mm
3	Beam	100*100 Galvanized Tube	t=2.0mm
4	Chassis Structure	40*80 Galvanized Roller Pieces	t=1.8mm
5	Chassis accessories	5# Galvanized Angle Steel	
6	Hanger	Standard Stamping Firmware	t=7.0mm
7	Top Structure	50*50 Galvanized Tube	t=1.8mm
8	Panels	2500*1150*50 Corrugated Board	t=0.5mm,40g glass wool
9	Fire Proof Floor	2800*1160*18 Sanding Board	Grade A Fireproof
10	Celling Tile	Color Steel Plate	t=0.3mm
11	Roof Insulation	Glass Wool	t=7cm
12	Roof Tile	Color Steel Plate	t=0.5mm
13	Door	1970*900*50 Steel Fireproof Door	Standard
14	Window	Aluminum Window	Standard
15	Supporting Facilities	Galvanized Steel Plate	t=1.2mm
16	Breaker	1pc	
17	Conditioner Outlet	1pc	
18	Five Hole Outlet	4pcs	
19	Single Switch	1pc	
20	18W Round Lamp	2pcs	
21	Wire		
22	Conditioning Rack	1pc	

Corrugated Container | Project Display



Corrugated Container |Project Display

