

Container House Catalog

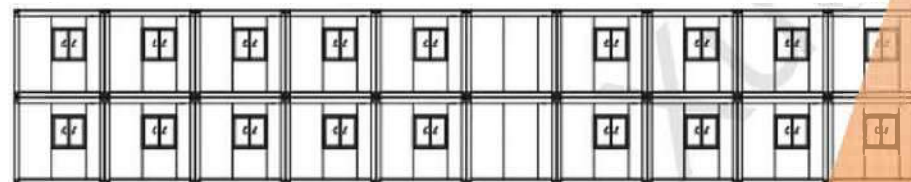
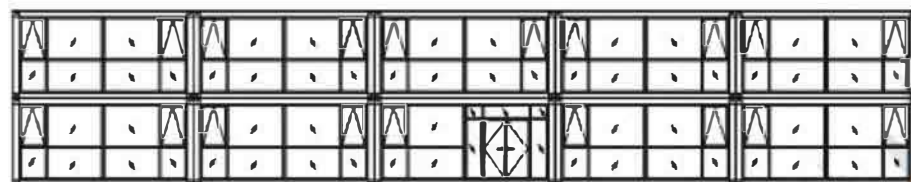
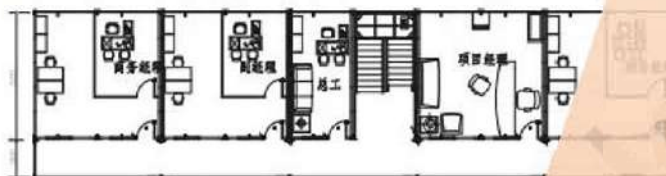
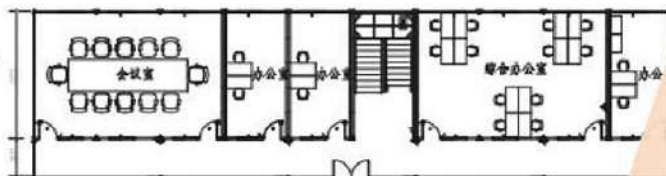


01 Ground Floor Plan

02 First Floor Plan

03 Front Elevation

04 Back Elevation



CONTENTS

④ *Folding house*

PART ① Product Overview

- **Convenient transportation**
- **Fast installation**
- **Sturdy and durable**
- **Flexible design**
- **High cost-effectiveness**

This document will focus on Packing Box Houses and Folding Houses.

These two types of houses have excellent value for money, are easy to install, reusable, and can be combined to create a variety of desired sizes.

The products are mainly made of steel frames, together with insulated sandwich panels, which together create a solid and insulated indoor environment

Regarding insulated sandwich panels, we offer different thicknesses and different sandwich materials.

The product especially has excellent splicing capabilities and can be used in multi-module combinations. Single layer combinations can become larger rooms, and multi-layer combinations can become multi-storey buildings.

PART ② Product Display

➤ *Product Description*

➤ *Product Size*

➤ *Product structure*

➤ *Product interior layout*

Packing Box Houses



Folding Houses

Packing Box Houses

Product Description

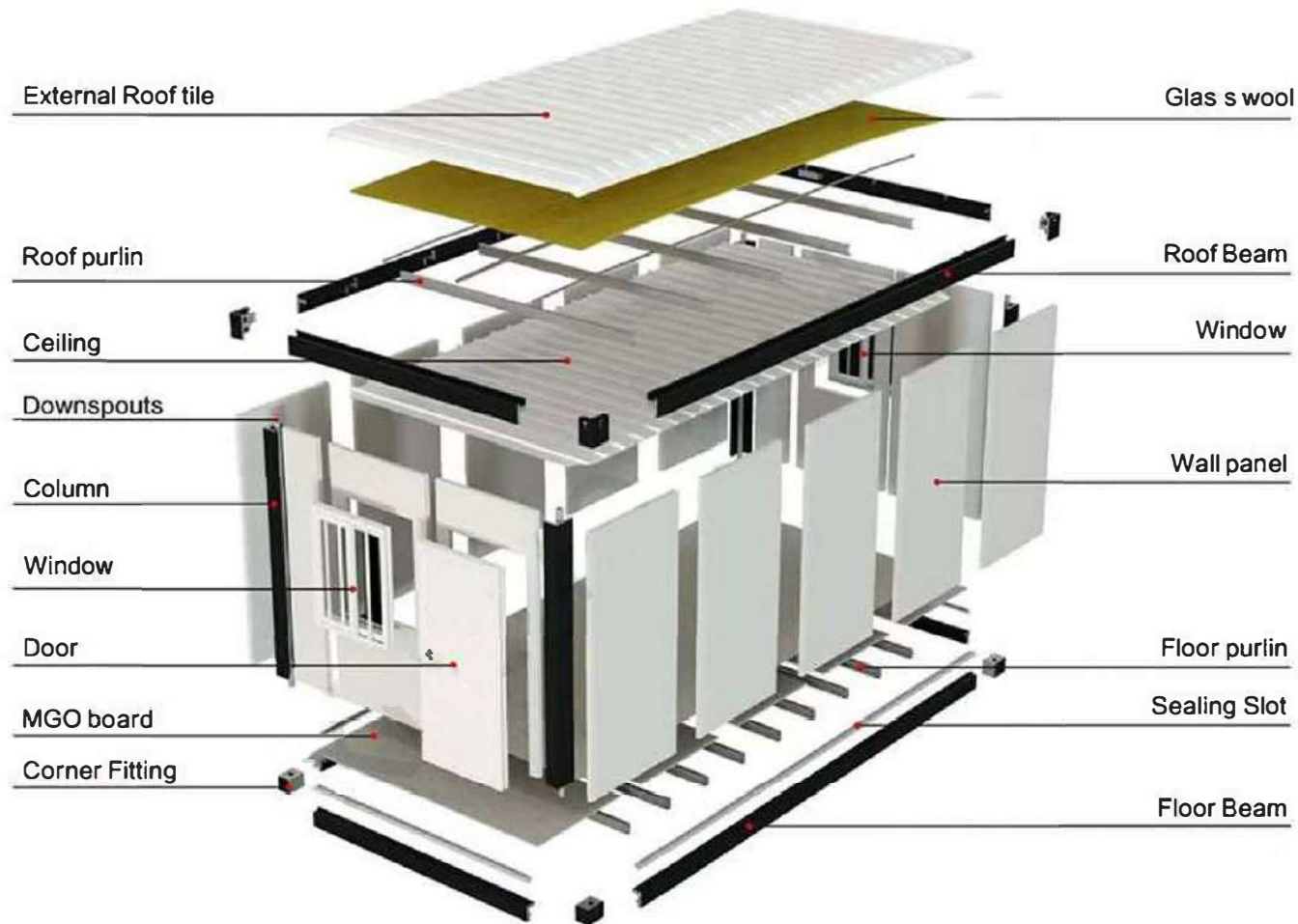
- Assembly of finished components without on-site welding
- Different wall panel thicknesses are available for selection
- Different sandwich materials are available for selection
- Shipped in pieces, one 40 container can transport up to 17 units
- Multiple modules are combined to form a larger space

Product Size	
Size	L5950*W3000*H2800mm
Cover area	13.4m ²



Packing Box Houses

Product details



Packing Box Houses ---- Customized optional reference



Packing Box Houses ----- A design showcase



Folding Houses

Product Description

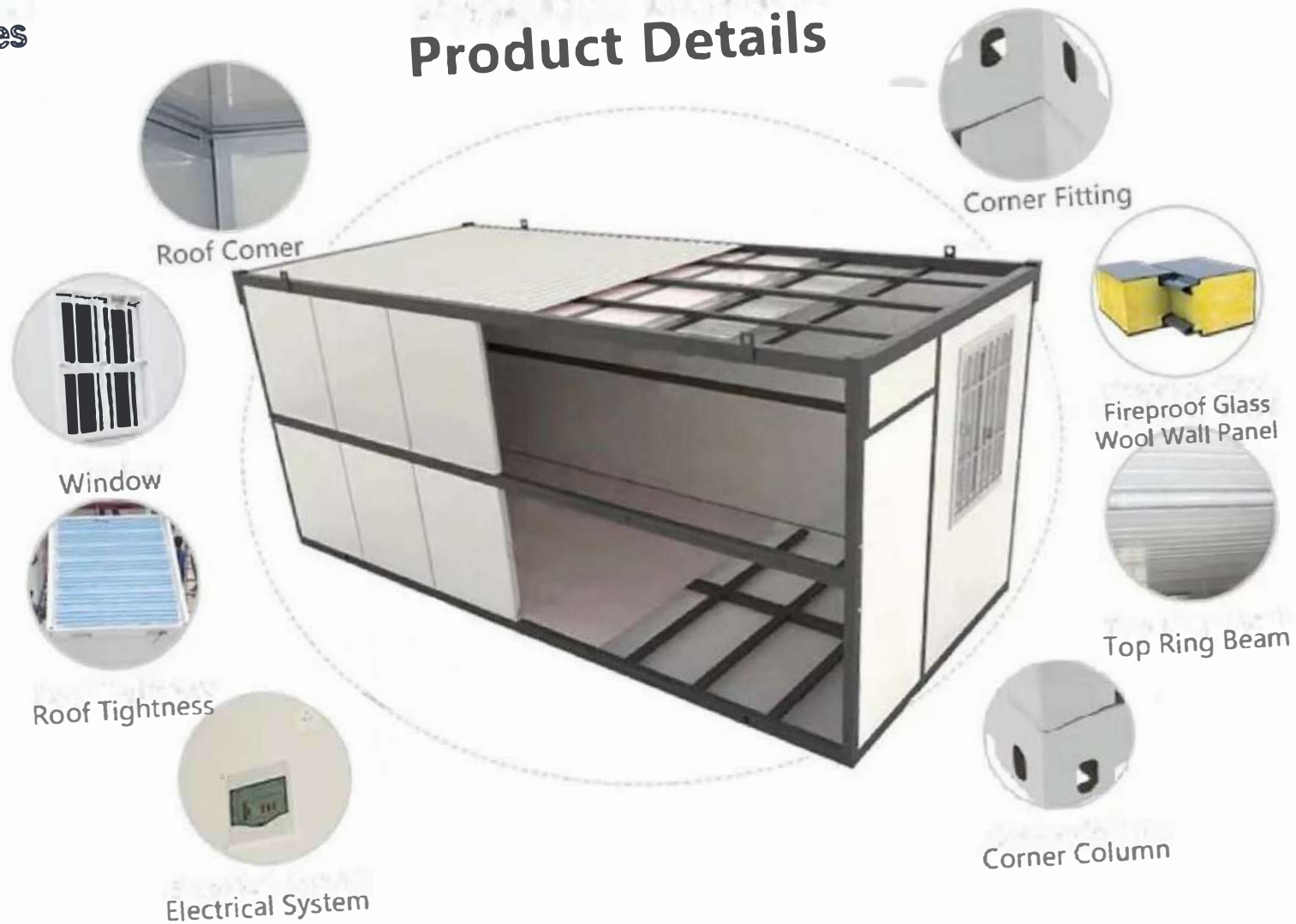
- Easy and fast installation
- Different wall panel thicknesses are available for selection
- Different sandwich materials are available for selection
- Shipped in pieces, one 40 container can transport up to 10 units
- Multiple modules are combined to form a larger space

Product Size	
Size	L5800*W2480*H2470mm
Cover area	13.4m ²



Folding Houses

Product Details



Folding Houses ---- Simple and fast installation steps



Simple and fast installation is the biggest product advantage of folding houses.
Which can save a lot of installation time and cost.

If other things need to be installed in the room,
the house needs to be unfolded first

Folding Houses



different colors and combination available

