



Container House Catalog



01.

**Normal folding
container house**

02.

**Upgraded folding
container house**

03.

Differences

04.

**Z-type
folding house**

CONTENTS

01

Type 1--Normal folding container house

...

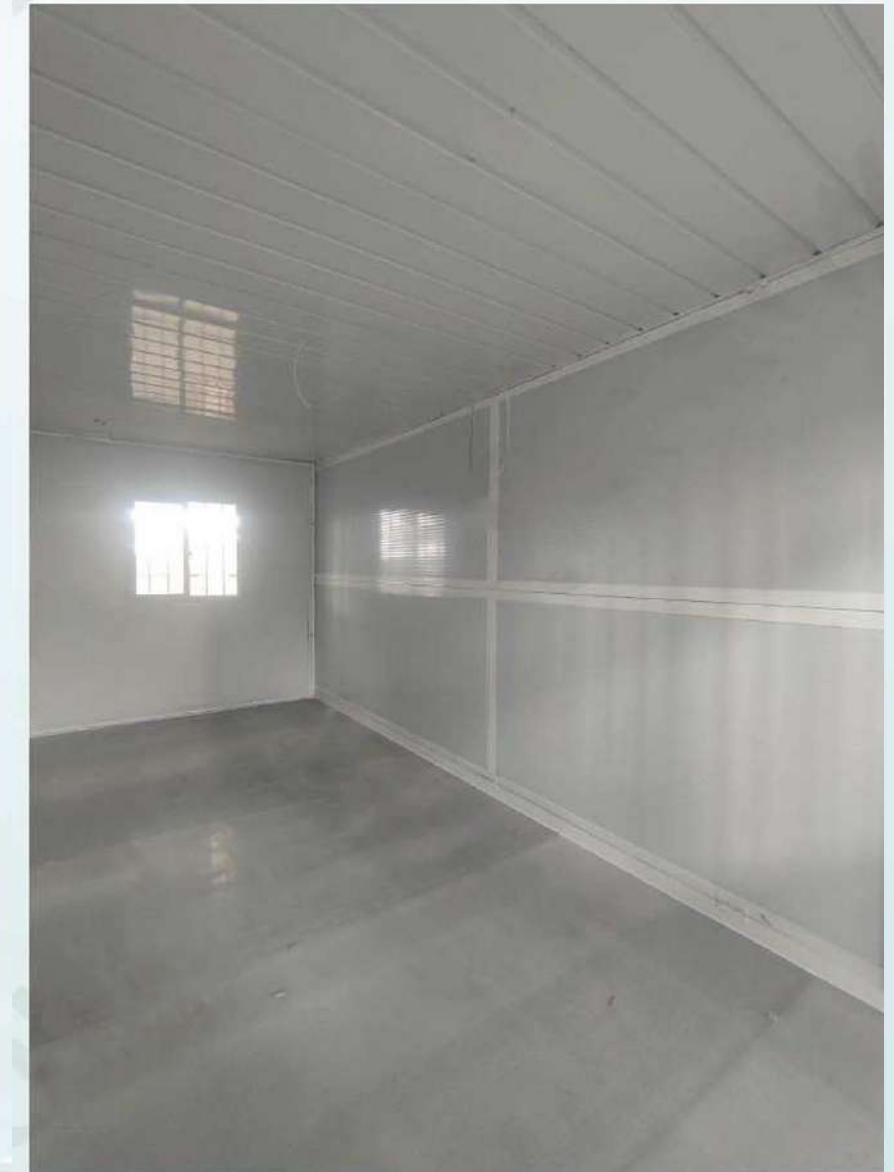
Advantages

1. Low price , more cost-effective and easily accepted by everyone;
2. Can fold, one 40HQ can fit 12units , save labor and shipping cost ;
3. Easy to install ,move and store ;
4. Generally used for construction sites, workers' residences, dormitories or temporary residences





Picture display



02

Type 2--Upgraded folding container house

...

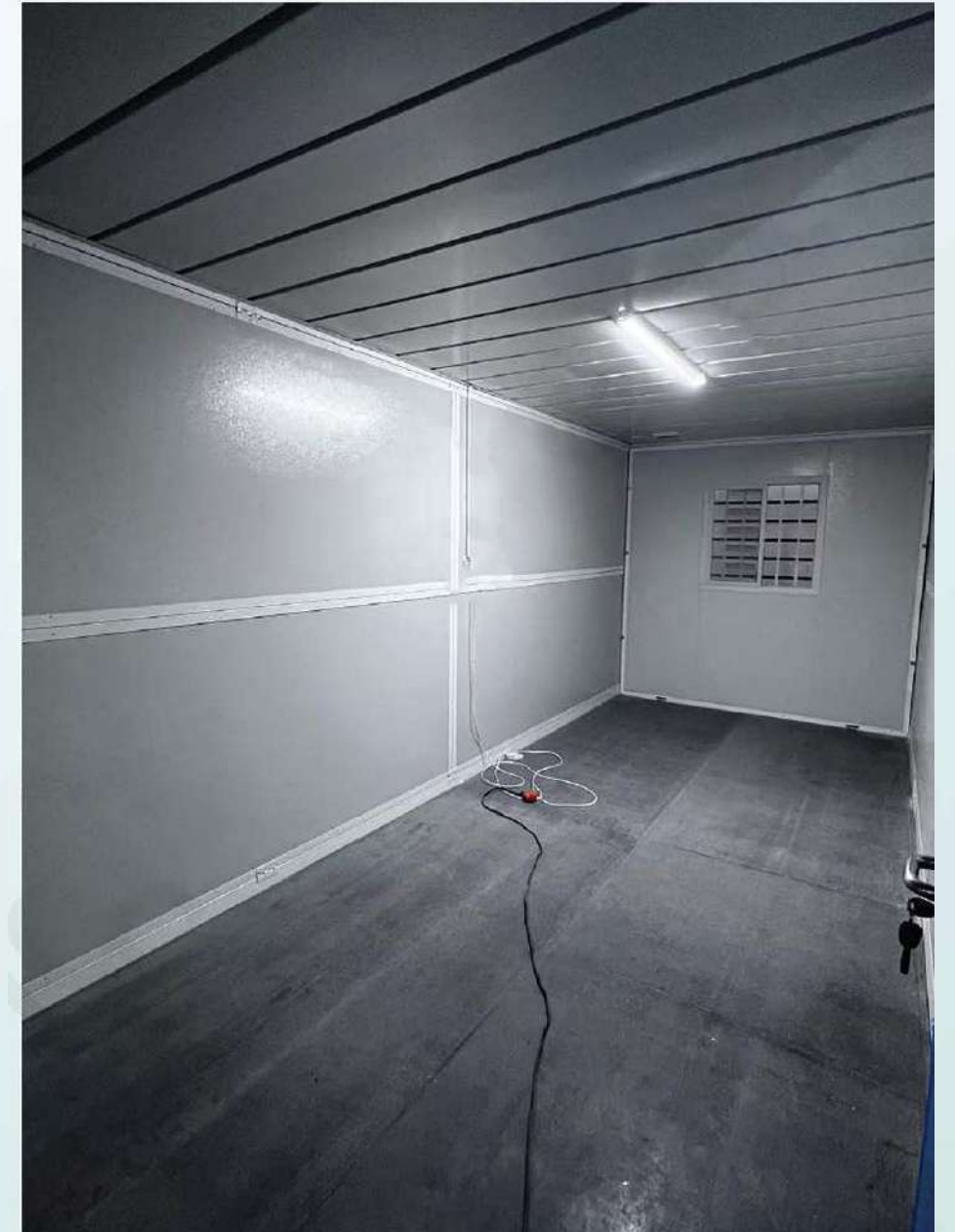
Advantages

1. The price is a little more expensive than normal folding houses, but the technology is upgraded;
2. Stronger bearing capacity, more beautiful appearance, thicker and stronger, better sealing ,increase the number of cycles ;
3. Can fold, one 40HQ can fit 12units , save labor and shipping cost ;
3. Easy to install ,move and store ;
4. Generally suitable for people who want higher quality and higher end, used as dormitories or residences





Picture display



03

Differences

...

Column



VS

Thicker columns
enhance structural stability and
load-bearing capacity



The top and bottom
purlins are enhanced

Improve bearing capacity, resulting
in greater stability of the ground



Corner



VS

Thickened corner
more beautiful and smooth, edge fit



Folded corner pieces



VS

Folded corner pieces
flush



Side and roof skin



VS

Side and roof skin
one new forming process, load-bearing,
beautiful, rain proof

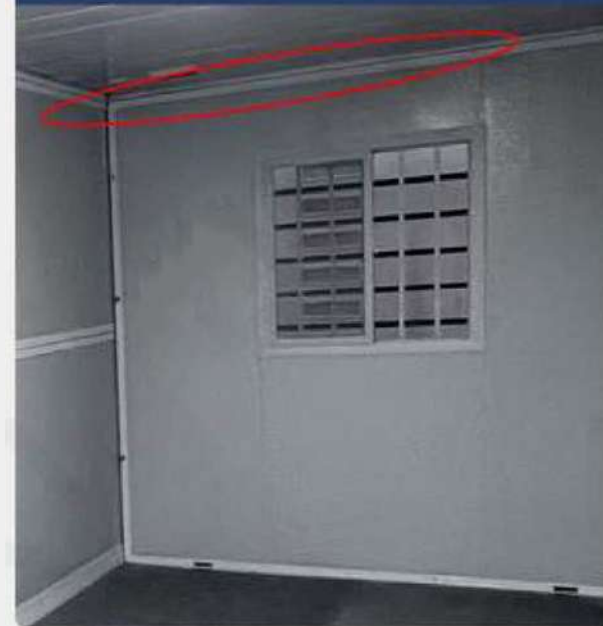


Internal concave line



VS

Internal concave line
process upgrade



Ordinary spray paint



VS

electrostatic spraying
has more weight and gloss



Ordinary colored steel plate



VS

Orange peel grain plate
more advanced, beautiful, smooth,
stronger hardness



Corner pieces are 2-3mm thick



VS

The corner parts are thickened to 8mm,
which is more beautiful and smooth



04

Type 3-- Z type folding flat pack container house

...

Advantages

1. The top is folded, the appearance is more beautiful and the sealing is better;
2. Special waterproofing process;
3. The top and bottom main beams, secondary beams and hanging heads are strengthened to make them more solid and durable;
4. The floor is made of calcium silicate board, which is fireproof and moisture-proof and has good durability;
5. Doors and windows are high-end burglarproof;
4. Generally used for residence, project or office.







Shipping

