



Container House Catalog



01.

**Flat Pack
Container House**

02.

**Z Type Folding Flat
Pack Container
House**

03.

Difference

CONTENTS

01

Type 1-- Flat Pack Container House

• • •

1. Safe and reliable structure, good sealing, beautiful and neat;
2. Special waterproofing process;
3. Rock wool board as wall board has stable quality and good thermal insulation performance;
4. Stainless steel doors and Windows;
5. The buckle plate connecting the container makes it more secure and stable.





Picture Display



02

Type 2 -- Z Type Folding Flat Pack Container House



1. The top is folded, the appearance is more beautiful and the sealing is better;
2. Special waterproofing process;
3. The upper and lower main beams, secondary beams and hanging heads are reinforced to make them more solid and durable;
4. The floor is made of calcium silicate board, which is fireproof and moisture-proof and has good durability;
5. The doors and windows are of high quality burglar-proof;
6. Generally used for residence, project or office.





Picture Display





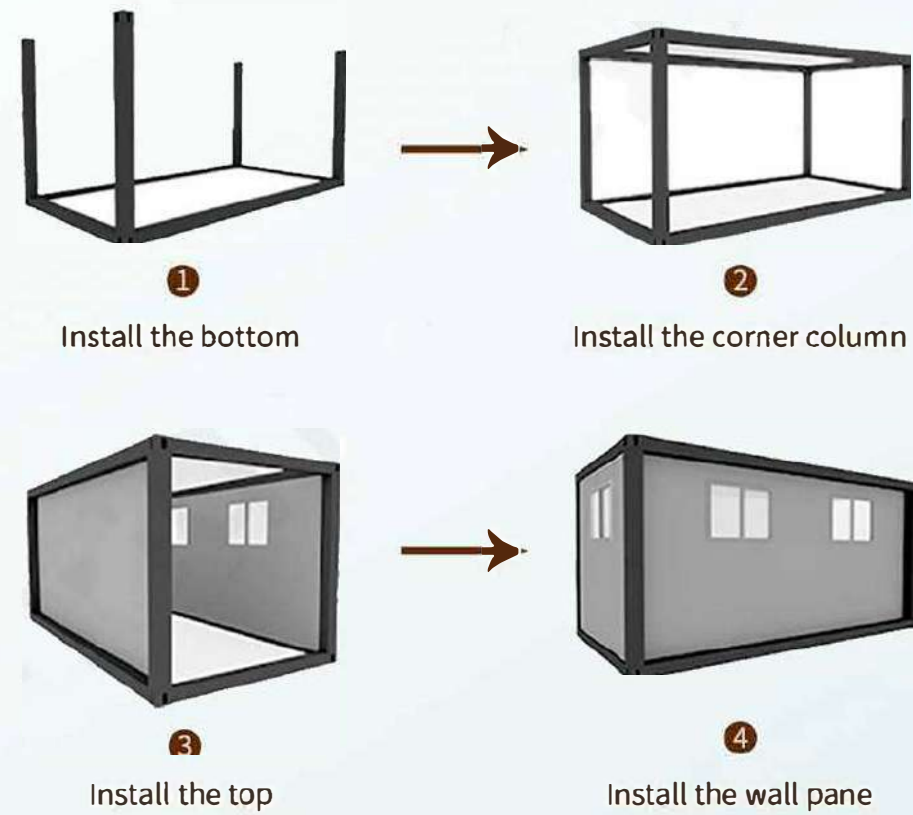
03



Need to install

VS

Foldable (Save labor cost)



Difference

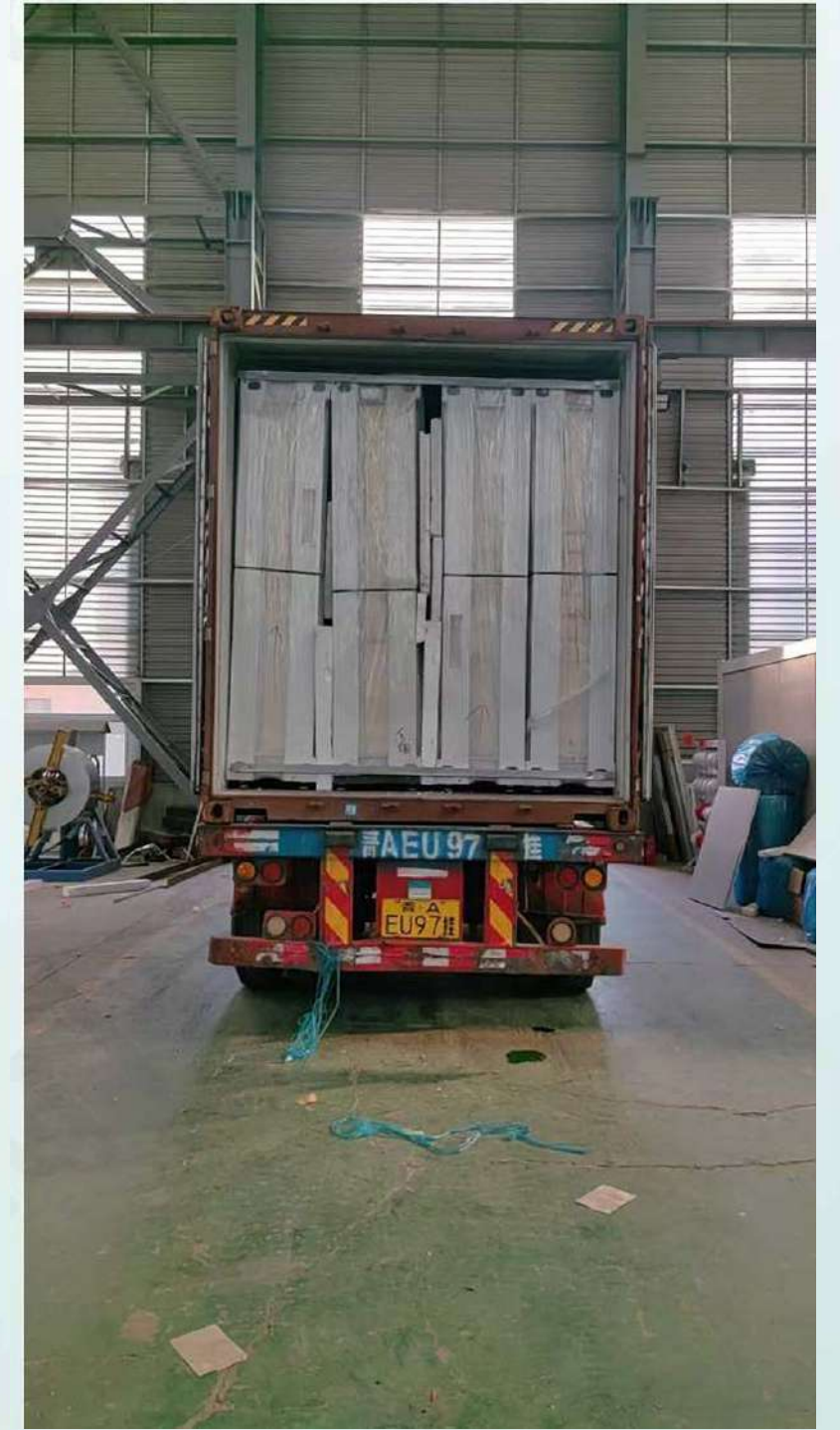


Shipping

...

One 40HC → 8 Units

PRODUCT



○○○



Big Projects

...

