




# Guardrail & Safety Barriers Catalog





Bridge guardrail.....	01-06
Road guardrail.....	07-08
Municipal traffic guardrail.....	09-10
Zinc steelguardrail.....	11-12
Wrought iron guardrail.....	13
Sports fence.....	14
Lawn guardrail.....	15-16
Railwayguardrail.....	17-18
Highway guardrail.....	19
Highway anti-glare mesh.....	20
Plastic wood fence guardrail.....	21-22
Workshopguardrail.....	23
Double guardrail.....	24
Border guardrail.....	25-26
Site standardization guardrail.....	27
Const ructlon guard rail.....	28
Water blocking plate.....	29-30
Steel grating.....	31-32
Sound barrier.....	33
Photovoltaic bracket.....	34

## Bridge guardrail



Anti-collision guardrails are typical cold-formed steel products with the advantages of good impact resistance, low cost, long life, higher safety, and green environmental protection. The width of the fence: 310MM, the thickness: 3MM, 4MM. 1 ton of guardrail boards can be laid: 80 meters with 3MM thickness and 61 meters with 4MM thickness. The 3MM thick one weighs 12.3 tons per kilometer, and the 4MM thick one weighs 16.388 tons.

Surface treatment process: fully automatic electrostatic powder spraying (plastic spraying) or spray painting. The surface treatment materials used for outdoor anti-collision guardrails are waterproof materials. The anti-collision guardrail is beautiful in appearance and not easy to rust.



## Bridge guardrail

Anti-collision column: carbon steel, stainless steel, aluminum alloy, etc.

Anti-collision guardrail material: Q235bc, 0345bcde, 0355bcde, etc.

Stainless steel material: 201, 304, 316, 316L, etc.

Other accessories: base plate, embedded parts, bolts, nuts, etc.



## Bridge guardrail

The LED lighting guardrail is a successful product that combines the practical functions of urban facilities and the artistic viewing function. It solves the problem of hiding lamps, is easy to install, and plays a safety warning and guidance function for vehicles and pedestrians.

The lights designed on the pillars have soft brightness and are available in warm and cold colors, which play a very good supporting role in road lighting!



The product specifications are complete and any size can be customized according to user requirements, or personalized design can be carried out according to environmental needs. It is suitable for night scene lighting in public places such as main streets, parking lots, parks, tourist areas, artificial street bridges, viaducts, highway bridges, railway bridges, and cross-sea bridges.



## Bridge guardrail

The structure is simple, beautiful, practical and easy to transport, and the installation is not restricted by terrain fluctuations. Especially suitable for mountainous, sloping and curved terrain. The price is moderately low and suitable for large areas. Various metal landscape guardrails are not only strong in quality and elegant in appearance, but also beautiful in shape and low in price, adding a beautiful landscape to the city.



## Bridge guardrail

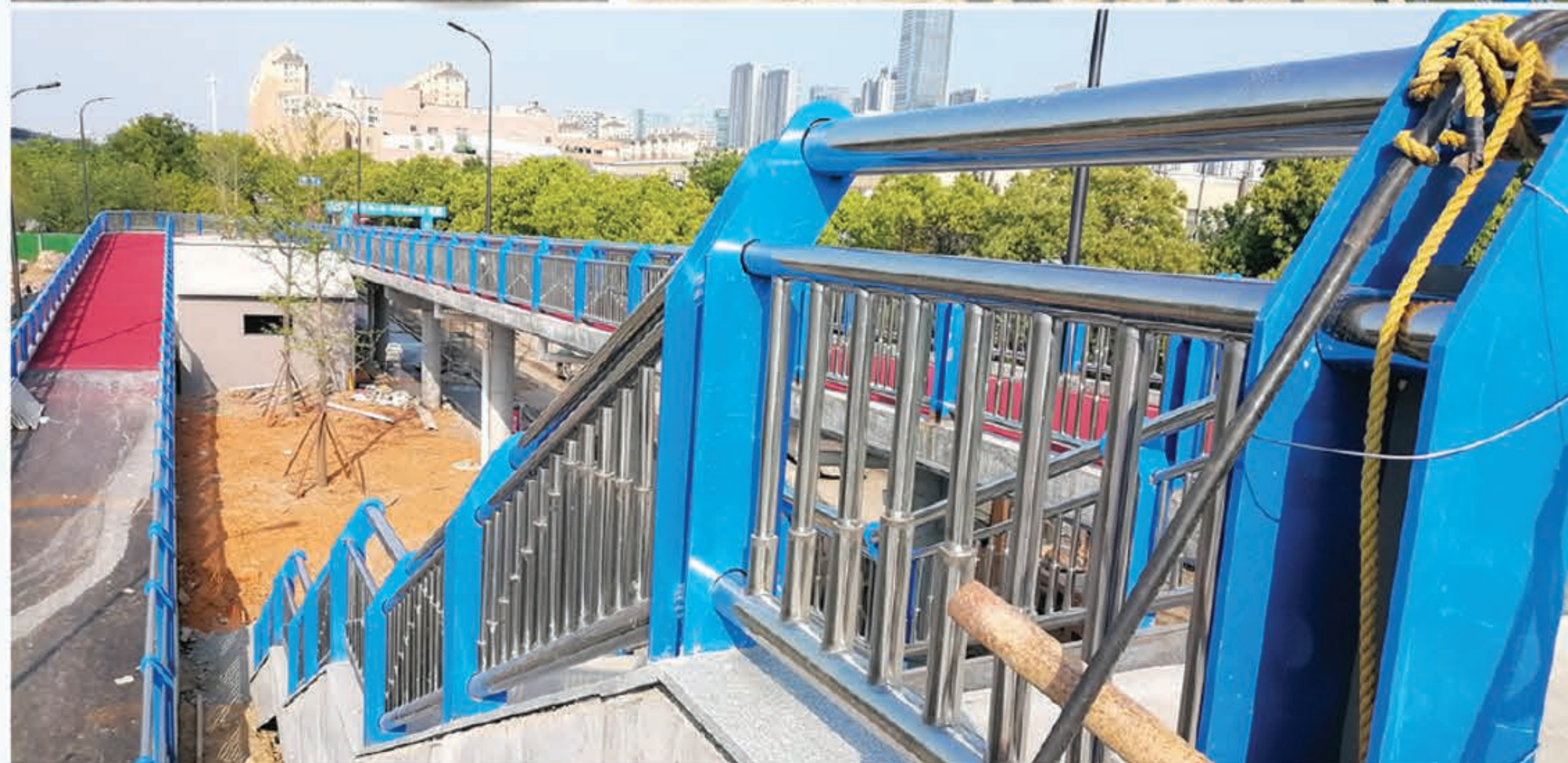
This product uses e-zinc steel columns. The surface of the front column is treated with electrostatic spraying. The horizontal pipe is made of stainless steel/carbon steel composite pipe. It is made of bimetallic materials such as stainless steel (SUS304) and carbon structural steel (Q195-Q235, SPCC). Made of high-tech synchronous composite welding, the product combines the gorgeous appearance of stainless steel, corrosion resistance and many outstanding advantages of carbon steel structural strength. Compared with pure stainless steel pot tubes, it saves costs and increases strength.



**Thickened material:**  
Dynamic corrosion and rust-proof, durable, high-quality steel, wear-resistant and pressure-resistant, strong impact resistance.



**Excellent material:**  
Made of synchronous composite without pressure, it is corrosion-resistant, wear-resistant, beautiful in appearance, and has good bending strength and impact resistance.



## Bridge guardrail



# Road guardrail

**Blocking function:** The traffic guardrail will block bad traffic behavior and block pedestrians, bicycles or motor vehicles from crossing the road. It requires the guardrail to have a certain height, a certain degree of curvature (referring to the vertical rail), and a certain strength.

**Warning function:** Through installation, the outline on the guardrail should be made simple and clear, and the driver should pay attention to the existence of guardrails and pay attention to pedestrians and non-motorized vehicles, so as to prevent traffic accidents.

**Aesthetic function:** Through different materials, different forms, different shapes and different colors of guardrails, integration and coordination with the road environment can be achieved.

**Reflective effect:** Due to the use of S-shaped fence panels welded at a 45° angle, the angle of reflection of the reflective film is changed. When the vehicle is driving at night, under the illumination of the car lights, the plane of the reflective film is facing the driving vehicle, so that the reflective film reaches its maximum Best reflective effect.

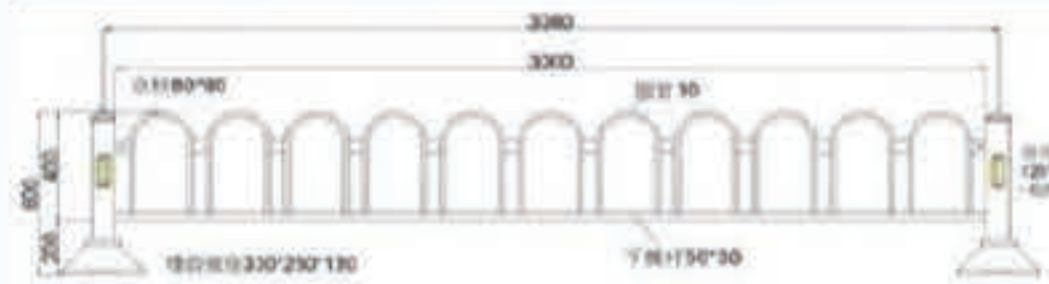
# Road guardrail

The key components of this product are made of polymer composite injection molding. It has the advantages of environmental protection resistance to compression deformation, flexibility at low temperatures, extremely high UV stability, and tear resistance. It is comparable to traditional cement isolation belts and metal isolation belts. Compared with this, the actual advantage is that it greatly reduces the incidence of accidents and the degree of damage to the vehicle itself and the human body when an accident occurs, and plays a real role in safety and isolation. Especially at night, under the illumination of lights, it can emit strong light, which is extremely eye-catching and not only brings safety to night driving, but also adds a bit of beauty to the city. Judging from the installation effect, it is relatively beautiful and practical, and has become a new landmark in the civilized city. In the next step, it will be installed at more intersections based on comprehensive considerations such as usage effect and applicability.

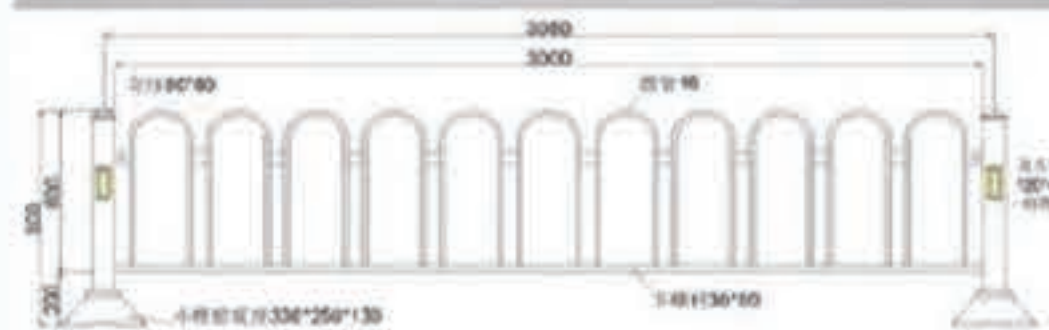


## 产品参数

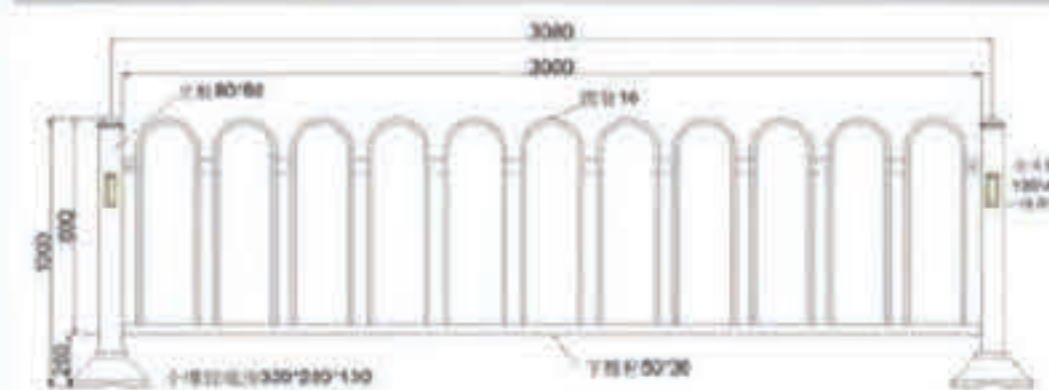
型号一：3080\*600 (单位：mm)



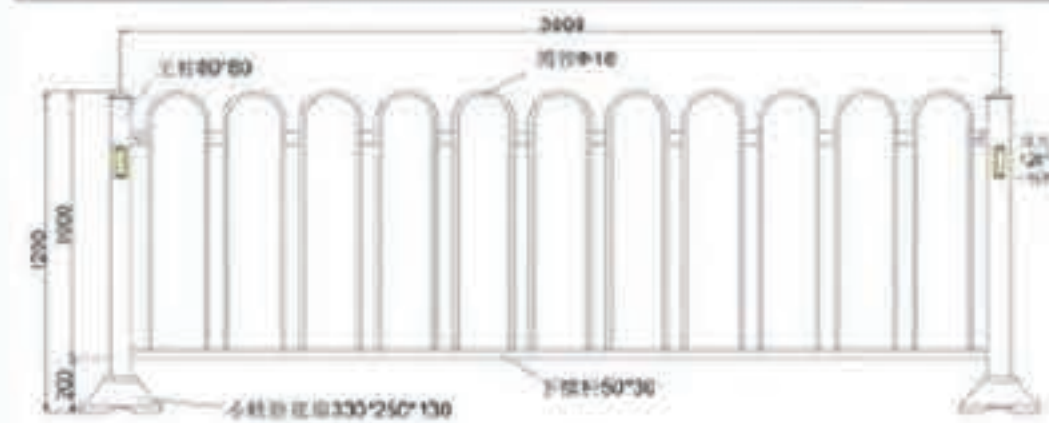
型号二：3080\*800 (单位：mm)



型号三：3080\*1000 (单位：mm)



型号四：3080\*1200 (单位：mm)



## Municipal traffic guardrail

**Product name:** Cultural guardrail, creative guardrail, cultural traffic isolation barrier, cultural road isolation barrier

**Material:** Galvanized steel pipe, stainless steel, cast iron, cast aluminum

**Usage:** Cultural guardrail of urban main road, used in sub-business management of municipal roads, sidewalk separation and other purposes

**Surface treatment:** galvanized, spray paint, fluorocarbon far (conventional color is bronze gold, dark gray, white, etc.)



## Municipal traffic guardrail

### Golden guardrail features:

1. Welding free assembly design, quick and simple installation
2. Four layers of anti-corrosion treatment, the service life of more than twenty years, to solve the corrosion problem of some products in a short time, but also reduce some maintenance costs
3. Environmental protection, it does not pollute the environment, to solve the problem of ordinary products polluting buildings
4. With good toughness, with better resistance
5. Buried installation mode and footing plate installation, saving the cost of building foundation
6. It has good salt spray resistance and heat resistance, suitable for installation in different areas



## Zinc steel guardrail

Zinc steel guardrails refer to balcony guardrails made of zinc alloy materials. Due to their advantages of high strength, high strength, and exquisite appearance, they have become a pillar product used in residential areas.

The fence is divided into:

Type A with four crossbars and double flowers,

Type B with three crossbars and one flower.

Type C three crossbars

Type D two crossbars

Type F non-standard guardrail

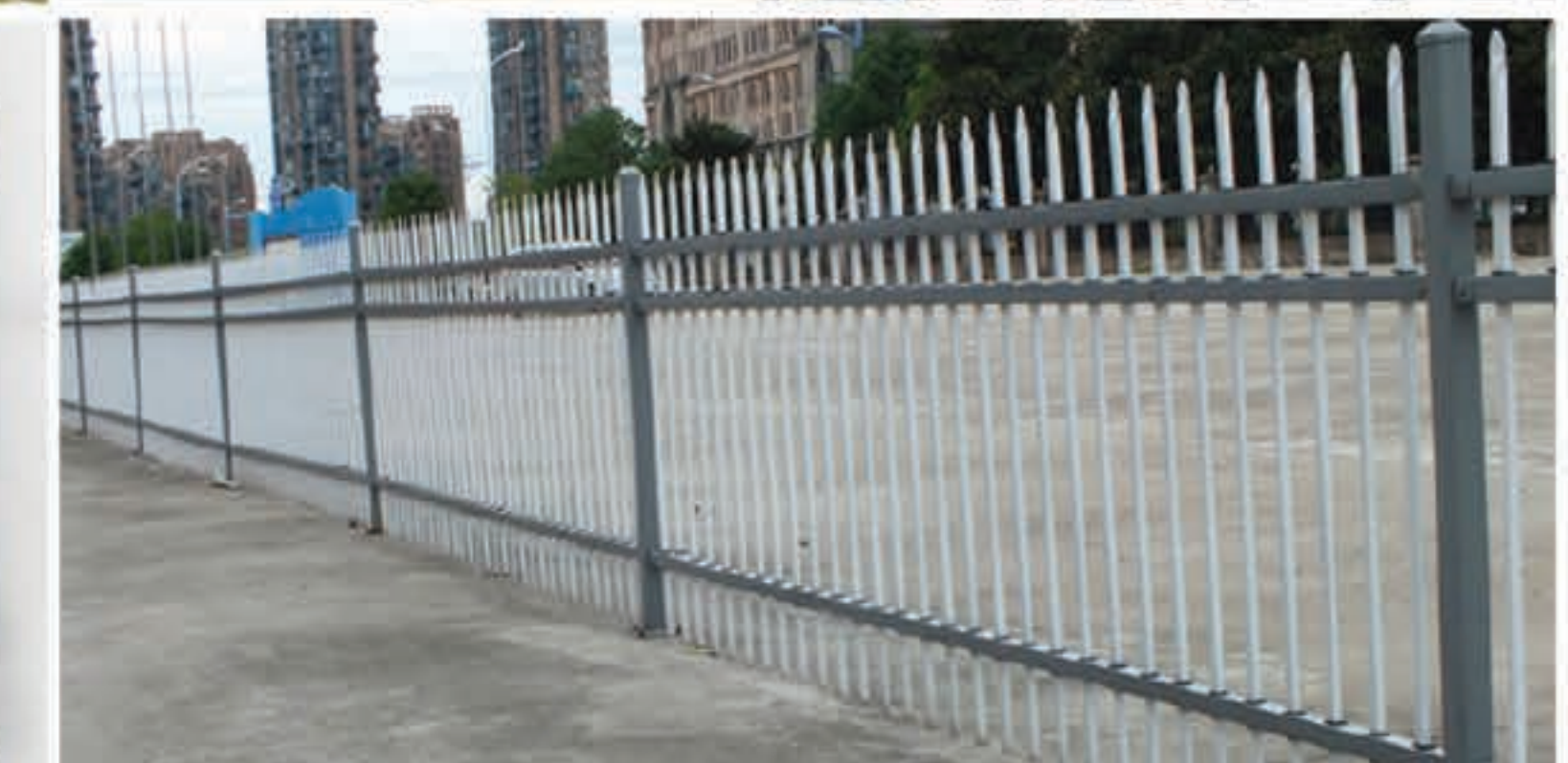


## Zinc steel guardrail



Common colors: Black matte, milky white, grass green, sky blue, dark pink, light pink, black gloss, gold flower, explosive silver, gray matte.

Special colors: Champagne, bronze, imitation bronze, powder can be adjusted according to special colors.





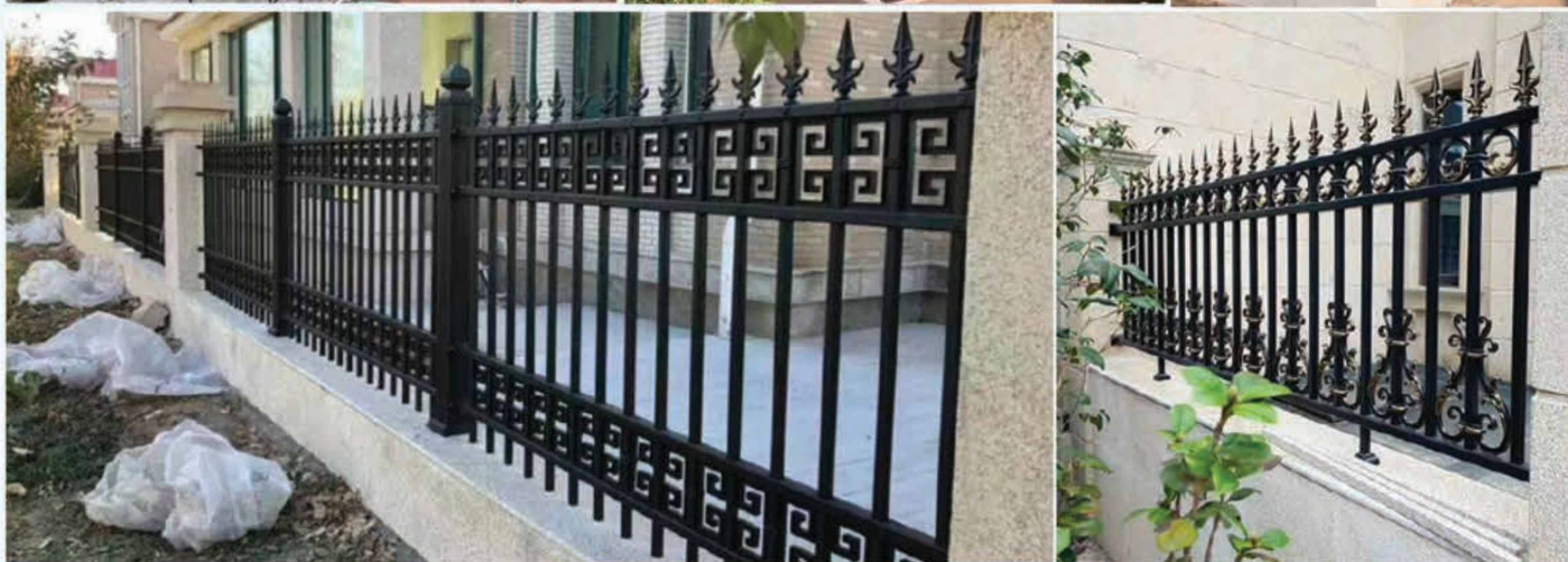
## Iron guardrail

### Classification:

**According to the functional uses of wrought iron guardrails:** Wrought iron balcony guardrails, wrought iron stair guardrails, wrought iron air conditioning guardrails, wrought iron peripheral wall guardrails, wrought iron anti-theft guardrails, etc.

**According to the technology classification of wrought iron guardrails:** Forged wrought iron guardrails, cast wrought iron guardrails, welded wrought iron guardrails, assembled wrought iron guardrails, wrought iron guardrails are classified, etc.

**According to their styles:** European wrought iron guardrails, Chinese wrought iron guardrails, etc.



## Sports guardrail

Scope of application: tennis courts, basketball courts, football fields, hockey fields, volleyball fields, baseball fields, etc.

Stadium fence product specifications	
Material	Galvanized wire, low carbon steel
Wire diameter:	3.0mm, 3.5mm, 3.8mm, 4.0mm, 5.0mm, etc.
Fence height	2500-6000mm, width: 2500-3000mm
Mesh specifications	40*40mm, 50*50mm, 60*60mm, etc.
Column specifications	60mm, 75mm, etc.
Beam specifications	48mm, 60mm, etc.
Surface treatment	Plastic coating (can be customized with electro-galvanized, hot-dip galvanized, spray-coated, diffused plastic)
Product advantages	High strength, good rigidity, beautiful appearance, wide field of vision, easy installation, bright and relaxed feeling.



## Lawn guardrail

Product name: Lawn guardrail

Product specifications: Support customization

Scope of application: Outdoor/garden/courtyard/villa, etc.

Service life: More than 20 years

Cutting color: Dark green/white

Installation method: Direct buried type (buried in the soil)

/flange type (expansion screw drilling in the cement floor)

Preferred material: Made of high-quality materials and advanced technology, it can show such clear lines and outlines.

1. Eye-catching colors
2. Customizable
3. Easy to install
4. Increased pressure resistance



### Advantages of Bent Lawn Guardrails:

Bent lawn guardrails can be selected according to specific needs, or in order to be generous and beautiful, and harmoniously integrate with the environment.

Different guardrail heights and guardrail styles can be selected.

1. The zinc coating is thick, crystallized finely, uniformly and without pores;
2. The zinc layer obtained by electroplating is relatively pure, corrodes slowly in acid, alkali and other mist, and can effectively protect the steel matrix;
3. The zinc coating forms white, colorful, military green, etc. after chromic acid potassium treatment, which is beautiful, generous and decorative;
4. Since zinc coating has good ductility, it can be cold punched, rolled, bent and other forming without damaging the coating.

## Lawn guardrail

PVC plastic steel guardrail has the characteristics of taking into account the strength and beauty of steel. It has the advantages of bright color, smooth surface, high strength, strong toughness, corrosion resistance, antistatic, no fading, no cracking, and no embrittlement.

PVC guardrails are divided into:

PVC lawn guardrails/PVC community guardrails/PVC wall guardrails

/PVC transformer fence guardrails/PVC green belt guardrails/PVC wall fences/PVC lawn fences

/PVC flower bed guardrails, etc.



## Railway guardrail

Railroad guardrail is an important transportation infrastructure, safety and practicality in the requirements of more stringent.

Railroad guardrail material: high-quality low carbon steel wire, aluminum-magnesium alloy wire

Weaving and welding; grid structure is concise, easy to transport, installation is not subject to the limitations of the terrain undulation, especially for the mountains, slopes, curved zones adaptability is very strong.

Railroad guardrail production process: first of all, the choice of high-quality coil pulled out of the finished wire; welding or compilation; and then the selection of frame materials should be selected from high-quality steel angle and back to the steel, in different fence uses on the choice of angle and back to the steel should be different, the overall spraying should pay attention to the uniformity of the degree of spraying, there is also the quality of the paint is also essential.

Railroad guardrail use: the railroad road on both sides of the isolation protection.



1. The railway guardrail columns are made of concrete castings, so the project cost is low;

2. High strength and good overall stability



## Railway guardrail



## Highway barrier

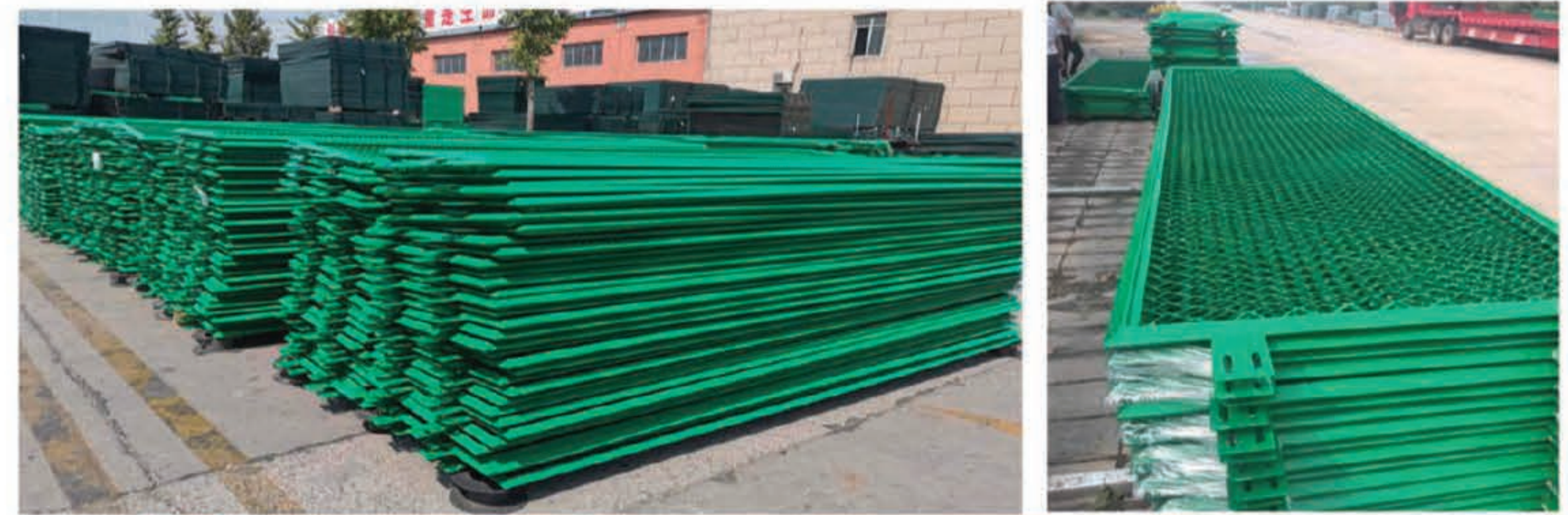
### Features:

1. Due to the installation mode of mesh and column combination, it has the characteristics of simple structure, easy installation, beautiful and practical. And it is easy to be transported, and it is not restricted by the terrain undulation during installation.
2. For the southern region, especially some mountains, slopes, curved areas on both sides of the highway can be easily installed.
3. Compared with other isolation fence products, the price is moderate, very suitable for large-scale promotion on both sides of the domestic highways of all levels.



## Highway anti-glare Mesh

Most of the highway anti-glare nets are made of steel plate mesh, profiled tube, side lugs, round tubes welded together, connecting attachments and hot-plated tube pillars fixed. Good anti-glare performance to play the role of anti-glare and protection; another anti-glare barrier, fence, mesh fence and other names. After galvanized plastic coated double coating can extend the service life, reduce maintenance costs, and easy to install, not easy to damage, less contact surface, not easy to dust can be kept clean for a long time, specifications are diverse, mesh body lightweight, novel shape, beautiful and durable, suitable for bridge anti-throw net.



## PLASTIC WOOD FENCE GUARDRAIL

PLASTIC WOOD FENCE IS A FENCE MADE OF WOOD FIBER AND PLASTIC COMPOSITE MATERIALS, SUITABLE FOR FENCES, CORRIDORS, GARDENS, VILLAS, ETC. HAS THE FOLLOWING ADVANTAGES:

1. DURABILITY: PLASTIC WOOD FENCES HAVE THE DUAL ADVANTAGES OF WOOD AND PLASTIC, WHICH CAN EFFECTIVELY RESIST CORROSION AND WATER EROSION, MAKING THEM MORE DURABLE THAN TRADITIONAL WOODEN FENCES.
2. LOW MAINTENANCE COST: COMPARED TO WOODEN FENCES, PLASTIC WOOD FENCES DO NOT REQUIRE REGULAR MAINTENANCE AND PAINTING, ONLY REGULAR CLEANING IS REQUIRED.



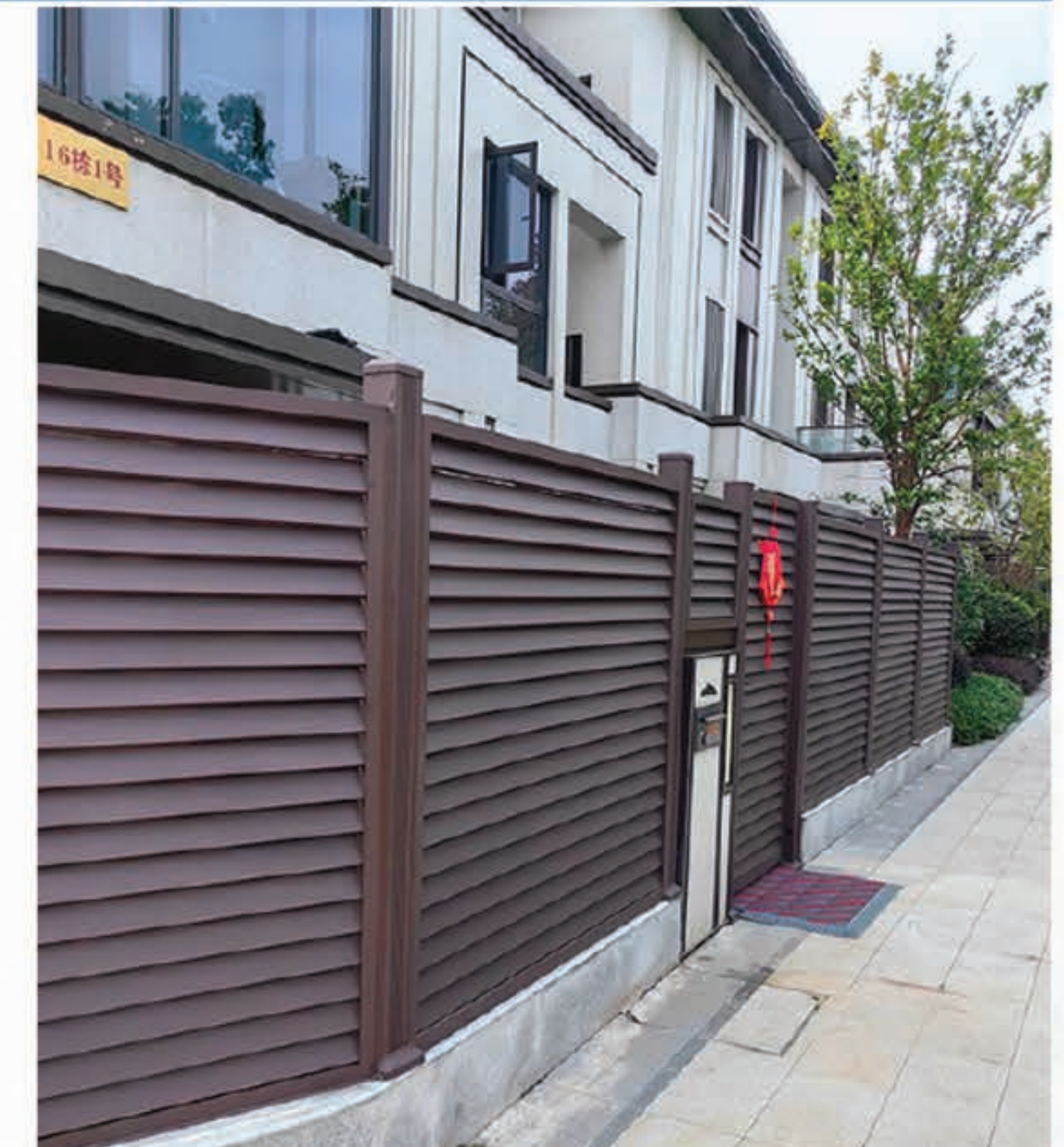
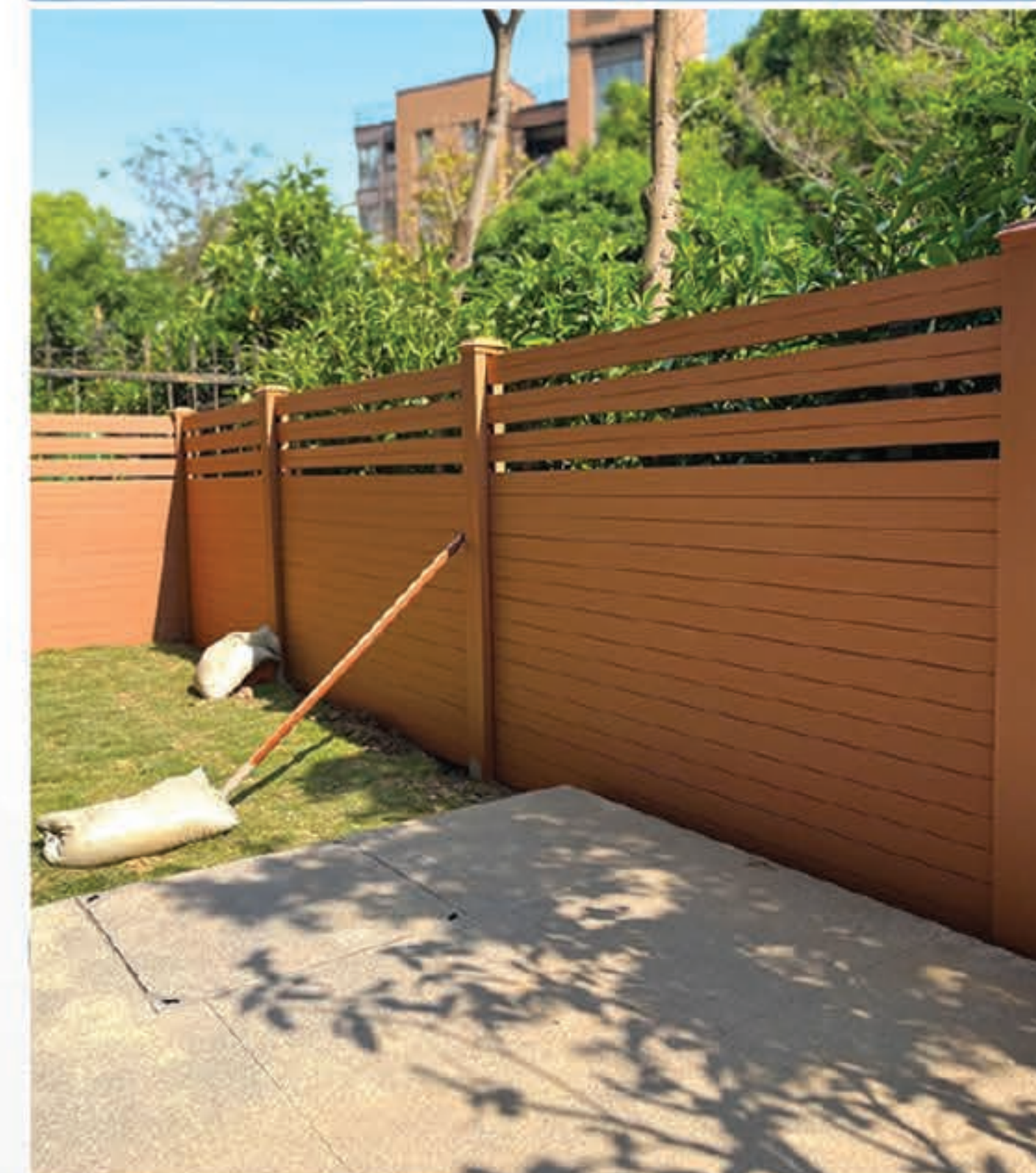
## PLASTIC WOOD FENCE GUARDRAIL

THE PLASTIC WOOD VILLA COURTYARD GUARDRAIL CAN SERVE AS A BOUNDARY DIVISION AND DECORATION FOR AREAS SUCH AS WALLS, FLOWER BEDS, AND LAWNS. ITS NATURAL TEXTURE AND ELEGANT LINES ADD A TOUCH OF NOBILITY AND ELEGANCE TO THE COURTYARD.

PLASTIC WOOD FENCES WILL NOT CRACK, WARP, OR PRODUCE SHARP EDGES LIKE TRADITIONAL WOODEN FENCES, MAKING THEM SAFER.



Surface treatment: Usually the bridge fence mesh anti-corrosion form of electroplating, hot plating, spraying, dipping plastic.



## Workshop guardrail

Workshop fence: also known as isolation fence, workshop isolation shed, factory isolation fence, factory isolation shed, site isolation fence, warehouse isolation fence, fence net.

Workshop fence specifications recommend:

- (1) Plastic dipped wire: 4.5mm-5.5mm
  - (2) Mesh size: 50mm\*150mm
  - (3) Size: 1800mm\*3000mm
  - (4) Post: 50\*50mm Square tube dipped
  - (5) Accessories: Rain caps, connectors, anti-theft bolts
  - (6) Connection method: Card connection
- product advantages:**
1. Novel structure and elegant style.
  2. The overall structure is stable.



## Double guardrail

Widely used in farms, farms, factories, highways, railways, development zones, parks, greening, orchards and other fields.

The top of the bilateral fence has a bend of about 30 cm long and 30 degrees of view point, which can be more useful to increase the isolation and anti-climbing effect, and help prevent animals such as pigs and singles from passing. The column of bilateral fence net can be fixed by embedded or flange screw. Connect the column and the mesh with anti-theft screws and fix it. The device is simple and fast.

**Double fence advantages:**

1. The grid structure is simple, beautiful and practical; Double-sided silk fence;
2. Easy to transport, installation is not limited by terrain fluctuations;
3. In particular, it is highly adaptable to mountainous, sloping and multi-curved areas;
4. The price is medium and low, suitable for large areas.



## Border guardral



Elevator protection door is the construction of elevator safety protection door, referred to as the elevator safety door, it is the construction site to prevent personal injury necessary protective facilities, it is suitable for all kinds of construction sites.

The elevator safety door adopts lemon yellow, blue, green, red, etc., and the iron plate in the middle of the door is sprayed with warning slogans. The lower part of the door is divided into yellow and black or red and white intervals to give people a warning effect.



## Border guardral



## Site standardization guardrail



## Construction guardrail

Name	Assembly type steel structure enclosure	Material	galvanized steel
Specifications	2.5M*6M/ customized	Color	Support customization
Surface treatment	Baking paint	Technology	can be spliced
Product features	Separator function, block function, warning function, etc		
Product use	Construction site fencing road construction factory construction municipal construction		



Assembly type enclosure: all steel profile production, solid structure, plate surface paint treatment, no rust, no color, strong wind resistance can be reused many times, quick disassembly, convenient maintenance, card slot installation mode, reduce screw installation, convenient transportation.





## Water blocking plate



The water blocking plate is made of stainless steel or aluminum alloy material as a whole, which has strong visibility and high practicality! The reflective strip on the upper part is professionally made of engineering grade reflective film, which is sturdy and durable with backing adhesive paper.



## Water blocking plate

### Function of water blocking plate:

Water blocking boards are also called waterproof boards, water blocking boards, rain blocking boards, rain blocking boards, flood prevention boards and water blocking boards. In rainstorm season, due to the large amount of rainwater, in order to prevent rainwater from entering underground garages, subways, basements and other places, water blocking boards are installed at the entrances and exits.

### Specification of water blocking plate:

The water blocking board has slots on both sides, a middle motherboard, and four expansion nails required for installation. The height of the water blocking board slot is consistent with the board height, usually 560mm, and the thickness of the middle board is about 25mm. The length of the water blocking board is determined by the specific width of the door used! The thickness of the card slot is about 40mm and the width is 30mm.

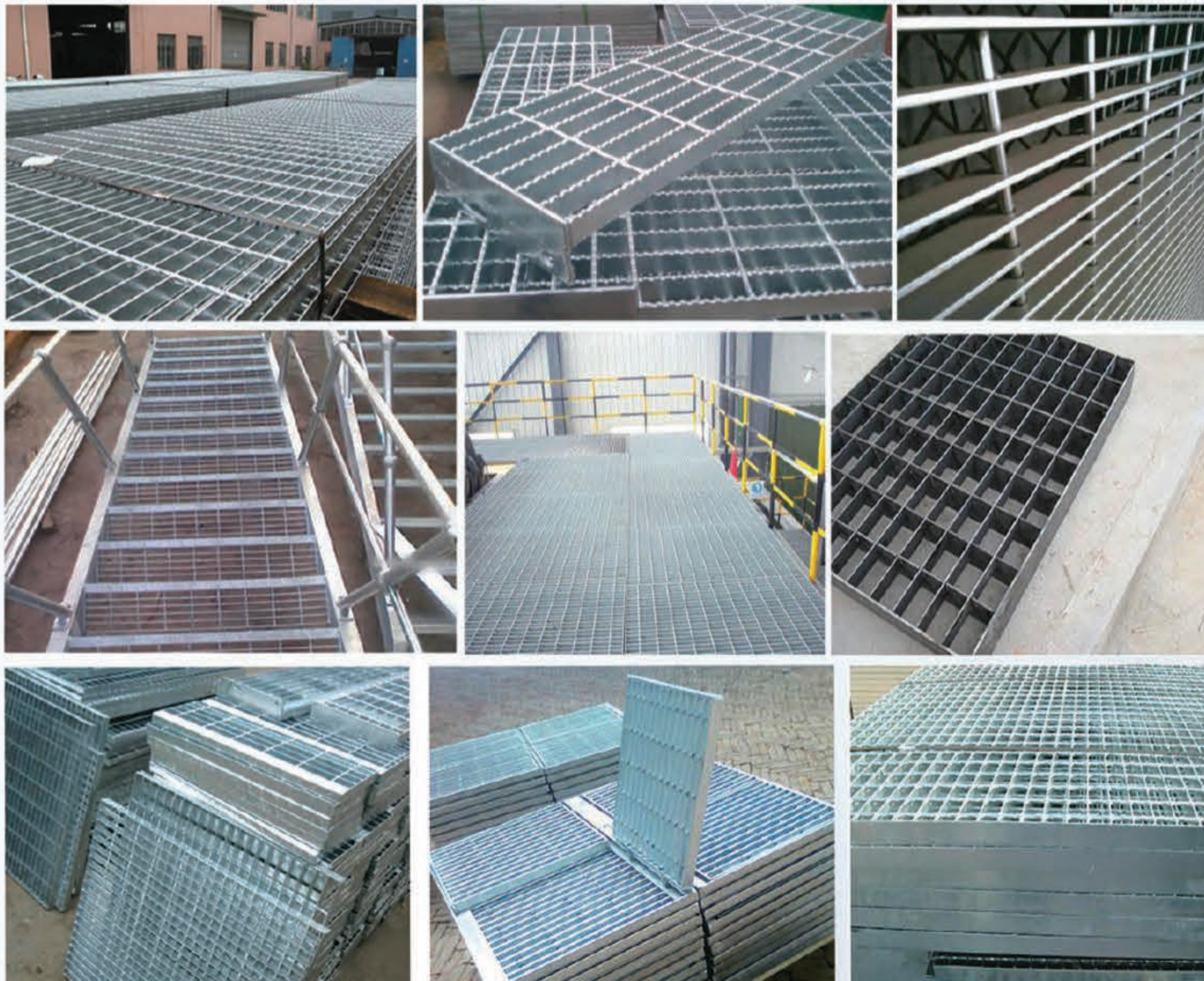


## Steel grating

Steel grid plate is generally made of carbon steel, hot dip galvanized appearance, can play a role in preventing oxidation. It can also be made of stainless steel. The steel grid plate has the properties of ventilation and daylighting, heat dissipation, anti-slip, explosion-proof and so on.

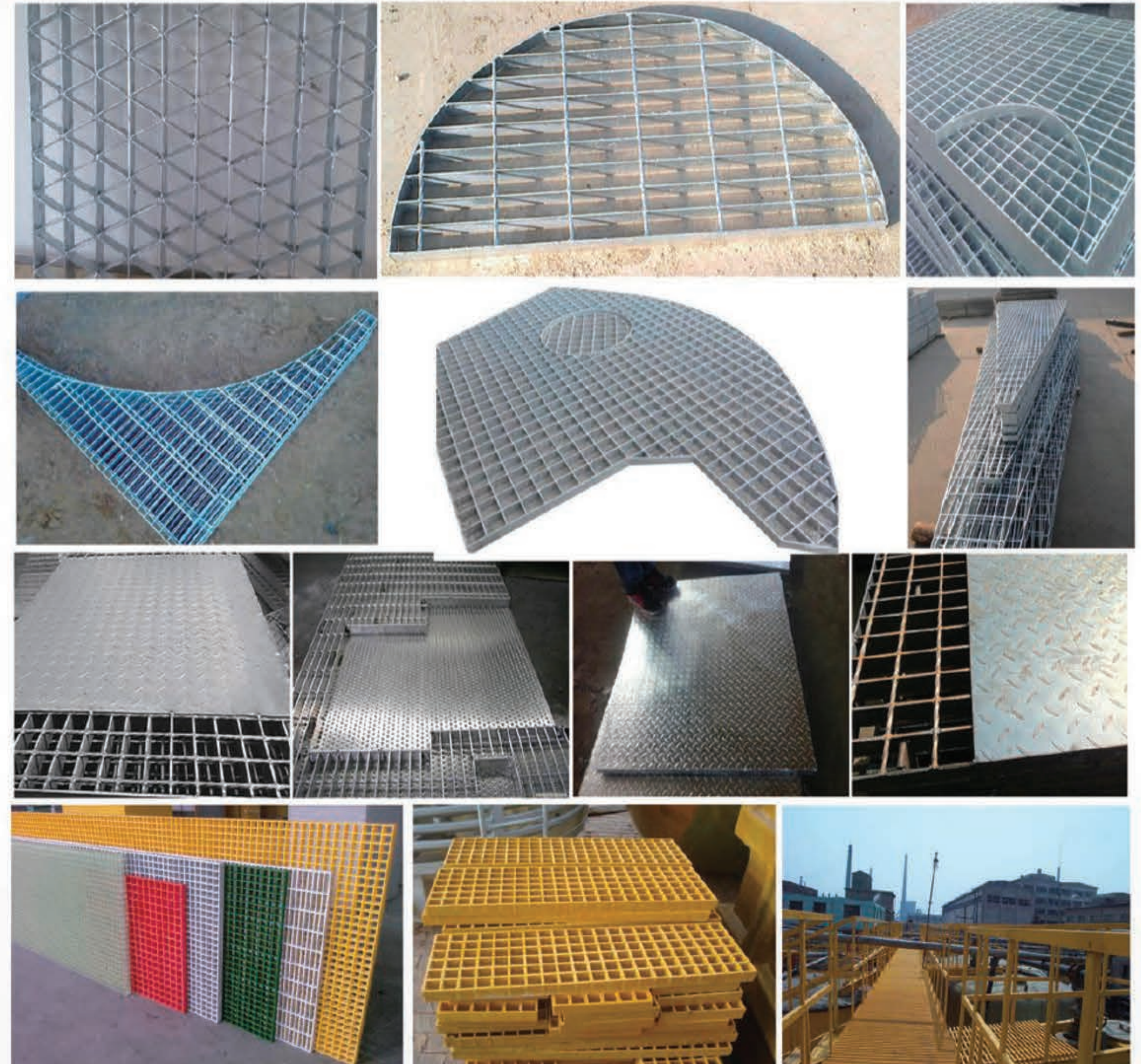
Steel grid plate is a kind of steel product with a square lattice in the middle, which is cross-arranged with flat steel according to a certain spacing and crossbar through the pressure welding machine or manual welding. Steel grid plate is mainly used to do ditch cover plate, steel structure platform plate, steel ladder step plate, etc. The cross bar is generally made of twisted square steel.

Application: Steel grid plate is suitable for alloy, building materials, power station, boiler. Building ships. Petrochemical, chemical and general industrial plants, municipal construction and other industries, with ventilation and light, anti-slip, bearing capacity, beautiful and durable, easy to clean, easy to install advantages.



## Steel grating

Steel grid plate, is to use flat steel in accordance with a certain spacing and crossbar (twisted square steel, square steel, round steel, flat steel, etc.) cross arrangement, and welded into a square lattice in the middle of a steel product, steel grid plate is mainly used to do ditch cover plate, steel structure platform plate, steel ladder step plate, etc. The cross bar is generally made of twisted square steel. Steel grid plate is generally made of carbon steel, hot dip galvanized appearance, can play a role in preventing oxidation. It can also be made of stainless steel. Steel grid plate has ventilation, daylighting, heat dissipation, non-slip, explosion-proof and other properties.



## Sound barrier

### Characteristics:

1. corrosion resistance, stable chemical performance, in the natural environment will not occur corrosion phenomenon, automobile exhaust has no effect on it;
2. high strength, bending capacity  $5.29\text{KN}/\text{m}^2$ , not easy to deform;
3. light weight (weight  $\leq 16\text{kg}/\text{m}^2$ ), can reduce the strength design requirements of the sound barrier foundation and column and bring convenience to the site installation;
4. smooth surface, beautiful style, good landscape effect, can be designed according to user requirements into a variety of different styles and surrounding coordination;
5. Ideal sound absorption and insulation effect, noise coefficient  $\text{NRC} \geq 0.8$ , weighted sound insulation  $\text{R}_w \geq 30\text{dB(A)}$ , can meet the requirements of a variety of noise sensitivity;
6. Convenient maintenance, no color change, easy cleaning, easy replacement after damage, etc.



## Photovoltaic bracket

### Introduce:

Solar photovoltaic bracket is a special bracket designed for placing, installing, and fixing solar panels in a solar photovoltaic power generation system. The general materials include aluminum alloy, carbon steel, and stainless steel.

### Texture of material:

The materials of solar support system related products are carbon steel and stainless steel. The surface of carbon steel is hot-dip galvanized, and it will not rust after 30 years of outdoor use. The characteristics of solar photovoltaic bracket systems are no welding, no drilling, 100% adjustable, and 100% reusable.



Photovoltaic brackets can be divided into three types: fixed, adjustable tilt, and automatic tracking, and their connection methods are generally welding and assembly.

