



Barbecues Catalog



13 INCH GRILL

Table top with two handles that can be carried easily.



Mini size serve **1-2 person.**

- SPECIFICATION -



Main Body Diameter: **32cm/12.6"**
Dia of Cooking Grid: **26.5cm**
Operation Height: **25cm**
Assembled Dimension(LxDxH):
50x46x47cm



N.W / G.W: **21KG / 24KG**
Package: **1 Carton**
Carton SIZE:
42.8x37.6x52cm



Loading Qty:
312 PCS/20'FT
648 PCS/40'FT
803 PCS/40'HQ



16 INCH GRILL

Portable & table-top for camping / kitchen / balcony



Portable size serve **2-4 person.**

- SPECIFICATION -



Main Body Diameter: **40.5cm/15.9"**
Dia of Cooking Grid: **34.5cm**
Operation Height: **29cm**
Assembled Dimension(LxDxH):
55x55x55cm



N.W / G.W: **31KG / 34KG**
Package: **1 Carton**
Carton SIZE:
51.5x46x50.8cm



Loading Qty:
192 PCS/20'FT
400 PCS/40'FT
500 PCS/40'HQ

18 INCH GRILL

Medium size that can fit small family.



Medium size serve **4-5 person**.

- SPECIFICATION -



Main Body Diameter: **45.7cm/17.9"**
Dia of Cooking Grid: **38.3cm**
Operation Height: **78cm**
Assembled Dimension(LxDxH):
116x63.8x107cm



N.W / G.W: **60KG / 66.5KG**
Package: **2 Cartons**
Carton A: **57x52x64cm**
Carton B: **55x51x17.5cm**



Loading Qty:
120 PCS/20'FT
252 PCS/40'FT
276 PCS/40'HQ



21 INCH GRILL

Hot selling size.



Large size serve **5-8 person**.

- SPECIFICATION -



Main Body Diameter: **54.7cm/21.5"**
Dia of Cooking Grid: **46cm**
Operation Height: **83cm**
Assembled Dimension(LxDxH):
127x75x115cm



N.W / G.W: **86KG / 95KG**
Package: **2 Cartons**
Carton A: **65x63.5x77.5cm**
Carton B: **55x51x17.5cm**



Loading Qty:
54 PCS/20'FT
108 PCS/40'FT
162 PCS/40'HQ



23.5 INCH GRILL



X-large size serve **8-10 person**.

- SPECIFICATION -



Main Body Diameter: **60cm/23.6"**
Dia of Cooking Grid: **51.5cm**
Operation Height: **85cm**
Assembled Dimension(LxDxH):
132.5x81x113cm



N.W / G.W: **92KG / 102KG**
Package: **2 Cartons**
Carton A: **73x70x75cm**
Carton B: **55x51x17.5cm**



Loading Qty:
48 PCS/20'FT
102 PCS/40'FT
153 PCS/40'HQ



26 INCH GRILL



XX-large size that
fit big party.

XX-large size serve **8-13 person**.

- SPECIFICATION -



Main Body Diameter: **66cm/26"**
Dia of Cooking Grid: **57cm**
Operation Height: **90cm**
Assembled Dimension(LxDxH):
141.5x85x122cm



N.W / G.W: **114KG / 125KG**
Package: **2 Cartons**
Carton A: **81x77x82.5cm**
Carton B: **78x52x24cm**



Loading Qty:
42 PCS/20'FT
84 PCS/40'FT
108 PCS/40'HQ





13 Inch Grill

- SPECIFICATION -



Main Body Diameter:
32cm / 12.6"
Dia of Cooking Grid:
26.5cm



N.W / G.W: **21KG / 23KG**
Package: **1 Carton**
Carton Size:
42.8x37.6x50cm



Loading Qty:
312 PCS/20'FT
648 PCS/40'FT
810 PCS/40'HQ

16 Inch Grill

- SPECIFICATION -



Main Body Diameter:
40cm / 15.9"
Dia of Cooking Grid:
33.5cm / 13.2"



N.W / G.W: **31KG / 34KG**
Package: **1 Carton**
Carton Size:
49x44x50.3cm



Loading Qty:
220 PCS/20'FT
460 PCS/40'FT
575 PCS/40'HQ



16 Inch Grill

- SPECIFICATION -



Main Body Diameter:
40.5cm/15.9"
Dia of Cooking Grid:
33.5cm



N.W / G.W: **34KG / 38KG**
Package: **1 Carton**
Carton Size:
56x53x51.5cm



Loading Qty:
160 PCS/20'FT
320 PCS/40'FT
420 PCS/40'HQ



16 Inch Grill

- SPECIFICATION -



Main Body Diameter:
40cm/15.7"
Dia of Cooking Grid:
33.5cm



N.W / G.W: **35KG / 40KG**
Package: **2 Cartons**
Carton A: **54x48x52cm**
Carton B: **63x33x11cm**



Loading Qty:
180 PCS/20'FT
380 PCS/40'FT
450 PCS/40'HQ



18 Inch Grill

- SPECIFICATION -



Main Body Diameter:
45.7cm/17.9"
Dia of Cooking Grid:
38.3cm



N.W / G.W: **54KG / 59KG**
Package: **2 Cartons**
Carton A: **57x52x64cm**
Carton B: **55x51x15cm**



Loading Qty:
120 PCS/20'FT
252 PCS/40'FT
276 PCS/40'HQ



21 Inch Grill

- SPECIFICATION -



Main Body Diameter:
55cm / 21.6"
Dia of Cooking Grid:
46cm



N.W / G.W: **72KG / 82KG**
Package: **2 Cartons**
Carton A: **65x63.5x77.5cm**
Carton B: **55x51x15cm**



Loading Qty:
54 PCS/20'FT
108 PCS/40'FT
162 PCS/40'HQ



23.5 Inch Grill

- SPECIFICATION -



Main Body Diameter:
59.5cm / 23.4"
Dia of Cooking Grid:
51.5cm



N.W / G.W: **82KG / 93KG**
Package: **2 Cartons**
Carton A: **73x70x75cm**
Carton B: **55x51x15cm**



Loading Qty:
48 PCS/20'FT
102 PCS/40'FT
153 PCS/40'HQ



26 Inch Grill

- SPECIFICATION -



Main Body Diameter:
66cm / 26"
Dia of Cooking Grid:
57cm



N.W / G.W: **99KG / 110KG**
Package: **2 Cartons**
Carton A: **73x70x80cm**
Carton B: **66x61x16cm**



Loading Qty:
48 PCS/20'FT
102 PCS/40'FT
137 PCS/40'HQ



29 Inch Grill

- SPECIFICATION -



Main Body Diameter:
72cm / 28.3"
Dia of Cooking Grid:
61.5cm



N.W / G.W: **128KG / 140KG**
Package: **1 Cartons**
Carton size:
85x95x90 cm



Loading Qty:
24 PCS/20'FT
56 PCS/40'FT
56 PCS/40'HQ

bbq with diamand texture and stainless steel stand.



18 Inch Grill

- SPECIFICATION -



Main Body Diameter: **45.7cm/17.9"**
Dia of Cooking Grid: **38.3cm**
Operation Height: **79.5cm**
Assembled Dimension(LxDxH):
121x65.5x108cm



N.W / G.W: **54KG / 59KG**
Package: **2 Cartons**
Carton A: **57x52x64cm**
Carton B: **55x51x15cm**



Loading Qty:
120 PCS/20'FT **252PCS/40'FT**
276 PCS/40'HQ



21 Inch Grill

- SPECIFICATION -



Main Body Diameter: **55cm/21.6"**
Dia of Cooking Grid: **46cm**
Operation Height: **91cm**
Assembled Dimension(LxDxH):
130x73x122cm



N.W / G.W: **72KG / 82KG**
Package: **2 Cartons**
Carton A: **65x63.5x77.5cm**
Carton B: **55x51x15cm**



Loading Qty:
54 PCS/20'FT **108PCS/40'FT**
162 PCS/40'HQ

19 INCH WITH TROLLEY

Premium version with 4cm-width heavy duty steel stand.



NEW

This size that fit **5-7 person**.

- SPECIFICATION -



Main Body Diameter:
49.2cm/19.3"
Dia of Cooking Grid:
42.5cm



N.W / G.W: **80KG / 88KG**
Package: **2 Cartons**
Carton A: **61x50x73cm**
Carton B: **68x57.5x15.5cm**



Loading Qty:
54 PCS/20'FT
114 PCS/40'FT
171 PCS/40'HQ

Assembled Dimension(LxDxH): **57.3x49.5x70cm**
Trolley Assembled Dimension(LxDxH): **127.3x57.3x89cm**
Full set Assembled Dimension(LxDxH): **127.3x65.4x127.6cm**

22 INCH WITH TROLLEY

Premium version with 4cm-width heavy duty steel stand.



NEW

This size that fit **6-9 person**.

- SPECIFICATION -



Main Body Diameter:
56cm/22"
Dia of Cooking Grid:
48.5cm



N.W / G.W: **94KG / 104KG**
Package: **2 Cartons**
Carton A: **68x66x75cm**
Carton B: **68x57.5x15.5cm**



Loading Qty:
48 PCS/20'FT
102 PCS/40'FT
153 PCS/40'HQ

Assembled Dimension(LxDxH): **72.5x56x73cm**
Trolley Assembled Dimension(LxDxH): **127.3x57.3x89cm**
Full set Assembled Dimension(LxDxH): **127.3x72.5x128cm**



13 Inch Grill

- SPECIFICATION -



Main Body Diameter:
32cm / 12.6"
Dia of Cooking Grid:
26.5cm



N.W / G.W: **21KG / 24KG**
Package: **1 Carton**
Carton Size:
42.8x37.6x52cm



Loading Qty:
312 PCS/20'FT
648 PCS/40'FT
803 PCS/40'HQ

16 Inch Grill

- SPECIFICATION -



Main Body Diameter:
40.5cm / 15.9"
Dia of Cooking Grid:
34.5cm



N.W / G.W: **31KG / 34KG**
Package: **1 Carton**
Carton Size:
51.5x46x50.8cm



Loading Qty:
192 PCS/20'FT
400 PCS/40'FT
500 PCS/40'HQ



18 Inch Grill

- SPECIFICATION -



Main Body Diameter:
45.7cm / 17.9"
Dia of Cooking Grid:
38.3cm



N.W / G.W: **62KG / 68KG**
Package: **2 Cartons**
Carton A: **57x52x64cm**
Carton B: **55x51x17.5cm**



Loading Qty:
120 PCS/20'FT
252 PCS/40'FT
276 PCS/40'HQ



21 Inch Grill

- SPECIFICATION -



Main Body Diameter:
54.7cm / 21.5"
Dia of Cooking Grid:
46cm



N.W / G.W: **86KG / 95KG**
Package: **2 Cartons**
Carton A: **65x63.5x77.5cm**
Carton B: **55x51x17.5cm**



Loading Qty:
54 PCS/20'FT
108 PCS/40'FT
162 PCS/40'HQ



24 Inch Grill

- SPECIFICATION -



Main Body Diameter: **60cm/23.6"**
Dia of Cooking Grid: **52cm**
Operation Height: **90cm**
Assembled Dimension(LxDxH):
132.5x81x113 cm



N.W / G.W: **92KG / 102KG**
Package: **2 Cartons**
Carton A: **73x70x75cm**
Carton B: **55x51x17.5cm**



Loading Qty:
48 PCS/20'FT
102 PCS/40'FT
153 PCS/40'HQ



- SPECIFICATION -



Main Body Diameter:
66cm / 26"
Dia of Cooking Grid:
57cm



N.W / G.W: **114KG / 125KG**
Package: **2 Cartons**
Carton A: **81x77x82.5cm**
Carton B: **78x52x24cm**



Loading Qty:
42 PCS/20'FT
84 PCS/40'FT
108 PCS/40'HQ

21 INCH TABLETOP PIZZA OVEN

Portable size which can be used to cook **28cm pizza**.



- SPECIFICATION -



Main Body Diameter: **53.3cm**
Window Size : **32x9.5cm**
Assemble Dimension(LxWxH) :
70.3x53.3x38.6cm



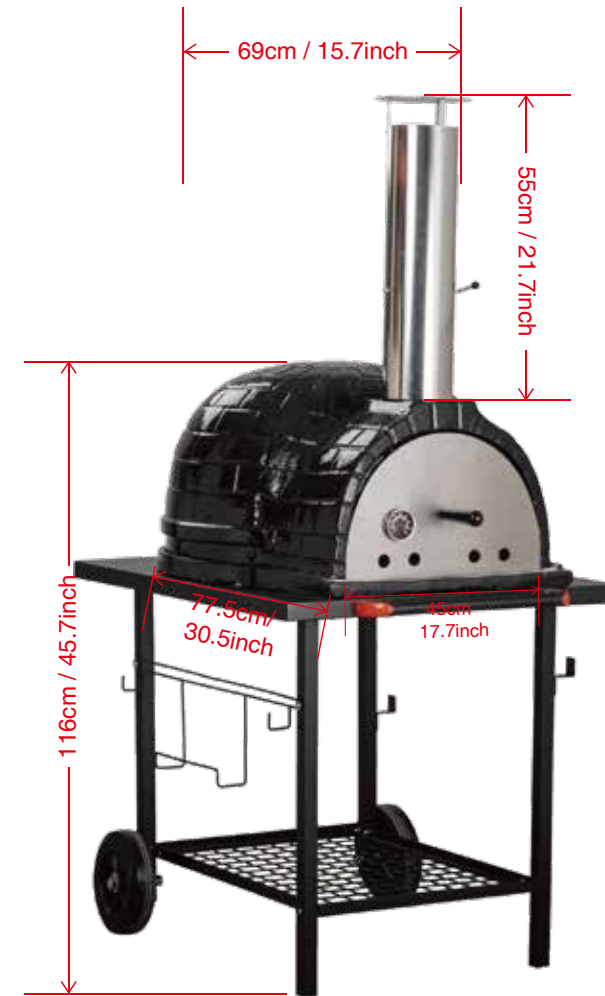
N.W / G.W: **30KG / 34.5KG**
Package: **1 carton**
Carton Size: **61.5x61.5x38cm**



Loading Qty:
162 PCS/20'FT
342 PCS/40'FT
399 PCS/40'HQ

26 INCH FREE STANDING PIZZA OVEN

26" pizza oven
with trolley cart included.
It can be used to cook
2x28cm pizza and can
reach high temperature
about 400°C.



- SPECIFICATION -



Pizza Oven with Steel Cart
Ceramic Body Diameter: **66cm**
window size: **38x22cm**
Steel Cart Assemble size:
92x73x74.5cm



Package: **2 CTNS/SET**
Ceramic Part : **75x65x42cm**
N.W / G.W: **54KG / 57KG**
Steel Cart : **86x75x16cm**
N.W / G.W: **34KG / 37KG**



Loading Qty:
65 PCS/20'FT
130 PCS/40'FT
150 PCS/40'HQ

ROCKET STOVE



- SPECIFICATION -



Main Body Diameter: **52cm/20.5"**
 Dia of Cooking Grid: **47.0cm**
 Rad of Cooking Grid: **23.5cm**
 Assembled Dimension (L*D*H):
61x52x134cm
 Operation Height: **98.5cm**



N.W / G.W: **73.5KG / 81KG**
 Package: **2 Cartons**
 Carton A: **60x60x55cm**
 Carton B: **60x60x55cm**



Loading Qty:
54 PCS/20'FT
120 PCS/40'FT
120 PCS/40'HQ



MODERN CHIMINEA

Premium wood burning outdoor fireplace that can be put in your garden.



- SPECIFICATION -



Product Dimension: **64x64x129cm**
 Stand Material: **1.0x20x20mm Steel**
 Size: **Dia 45cm**
 Height: **25cm**
 Finish: **Black Powder Coating**
 Overall Dimension: **64x64x148cm**



Package: **2 Cartons**
 Carton A: **72x72x68cm**
 Carton B: **21x21x78cm**



Loading Qty:
48 PCS/20'FT
96 PCS/40'FT
144 PCS/40'HQ

DELUXE 2 IN 1 GRILL

GAS & CHARCOAL
PLAY AS YOU LIKE!



NEW



- SPECIFICATION -



Main Body Diameter: **56cm/22"**
Dia of Cooking Grid: **48.5cm**
Assembled Dimension (L*D*H):
130x73x122cm
Operation Height: **91cm**



N.W / G.W: **72KG /82KG**
Package: **2 Cartons**
Carton A: **65x63.5x77.5cm**
Carton B: **55x51x15cm**



Loading Qty:
54 PCS/20'FT
108 PCS/40'FT
162 PCS/40'HQ

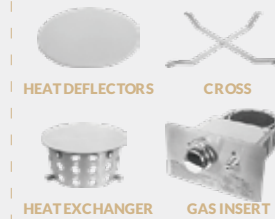


GAS & CHARCOAL PLAY AS YOU LIKE!

STANDARD PARTS



GAS

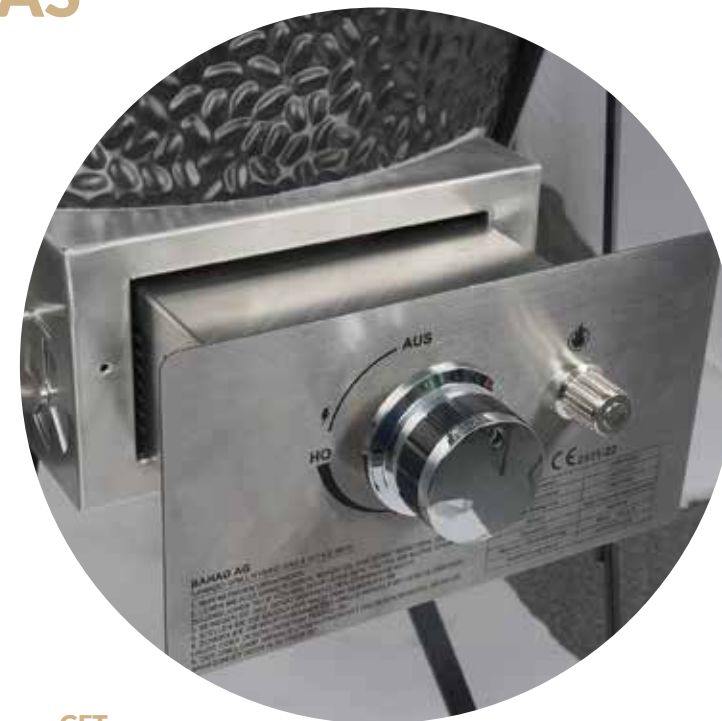


CHARCOAL



COOK WITH NATURAL GAS

EASY STEPS



REMOVE
ASH DRAWER

SLIDE IN
QUICKCHANGE
GAS INSERT
AND ADD HEAT
EXCHANGER



ADD
BRACKETS
AND
PIZZA STONE



GET
COOKIN'!



PRESS EASY START
BUTTON TO IGNITE
THE GAS INSERT



ATTACH QUICK
DISCONNECT AND
FULLY OPEN
TOP VENT



HIBACHI GRILL



GRILL +TABLE



NEW

Round

- SPECIFICATION -

Ceramic body size: **34.5x14cm**
 Assemble size: **45.5x34.5x17cm**
 Stainless steel cooking grate: **φ30.5cm**
 Bamboo handle: **10.5x3x2.3cm**
 Choacoal plate: **φ28cm, T=3mm**



N.W / G.W: **11.5KG / 12.5KG**
 Package: **1 Carton**
 Carton SIZE: **53x42x28cm**



Loading Qty:
570 PCS/20'FT
1191 PCS/40'FT
1324 PCS/40'HQ



NEW

Square

- SPECIFICATION -

Ceramic body size: **39.5x22x13cm**
 Assemble size: **52.5x22x16cm**
 Stainless steel cooking grate: **35x17cm**
 Charcoal plate: **22x14.3cm, T=3mm**
 Bamboo handle: **10.5x3x2.3cm**



N.W / G.W: **12.5KG / 13KG**
 Package: **1 Carton**
 Carton SIZE: **59.5x32x25.5cm**



Loading Qty:
704 PCS/20'FT
1495 PCS/40'FT
1656 PCS/40'HQ



Square

- SPECIFICATION -



Dimension:
41x24x17cm
 Diameter of Steel Grid:
3mm*2mm Steel sheet



G.W: **8.8 KG/PCS**
9.6 KG/CARTON
 Package: **1 PCS/CTN**
Color box for inner box
 Carton Size: **47x30.5x20.5 cm**



Loading Qty:
930 PCS/20'FT
1950 PCS/40'FT
2334 PCS/40'HQ



NEW

- SPECIFICATION -



Overall size: **152x76x130cm**
 Suitable for **18", 21", 23.5" & 26"**



Package: **2 Cartons**
 Carton A: **72x72x81cm**
 Carton B: **84x84x39cm**

26 INCH GRILL WITH TROLLEY



- SPECIFICATION -



Main Body Diameter: **66cm/26"**
 Dia of Cooking Grid: **57cm**
 Assembled Dimension(LxDxH):
115.3x91x127.1cm



N.W / G.W: **142.5KG / 156.8KG**
 Package: **2 Cartons**
 Carton A: **77x75x82 cm**
 Carton B: **87x75x26 cm**



Loading Qty:
36 PCS/20'FT
81 PCS/40'FT
102 PCS/40'HQ

23" OVAL SHAPE GRILL WITH TROLLEY



- SPECIFICATION -



Main Body Diameter: **59.5x44cm**
 Dia of Cooking Grid: **48x32.5cm**
 Operation Height: **TBC**
 Assembled Dimension(LxDxH):
TBC



N.W / G.W: **95CKG / 104KG**
 Package: **1 Carton**
 Carton Size:
77x66x79cm



Loading Qty:
TBC PCS/20'FT
TBC PCS/40'FT
TBC PCS/40'HQ

21 INCH PELLET& CHARCOAL GRILL



- SPECIFICATION -



Main Body Diameter: **55cm/21.6"**
Dia of Cooking Grid: **46.0cm**
Operation Height: **78cm**
Assembled Dimension(LxDxH):
130x73x122cm



N.W / G.W: **TBCKG / TBCKG**
Package: **2 Cartons**
Carton A: **TBC**
Carton B: **TBC**



Loading Qty:
TBC PCS/20'FT
TBC PCS/40'FT
TBC PCS/40'HQ

CUSTOMIZE IT YOURSELF



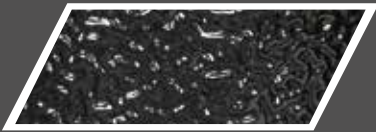
Regular

Top Vent



Which helps to control the airflow and therefore the internal temperature.

Surface Treatment



Bright gloss, nice touch, stains do not adhere easily, durable, No fading.

Hinge System



The New Strong Hinge system Can Effectively Preventing the Lid From Crashing Down.

Upgraded



Cast aluminum top vent

Adjustable and rainproof
Maintain precise temperature control.
Easily adjust to set your desired airflow.



Stainless steel top vent

Stainless steel material
Very durable and highly resistant to rust, corrosion, rain, and mold. Will not fall off or break. Good adjustment, accurate air flow. Cook in rain or snow, all weather top vent. Maintain settings when opening and closing the grill lid.



Cast iron top vent with rain cover

Cast aluminum material
Maintains precise airflow for consistent temperatures.
Does not lose its setting when the grill lid is lifted.
Prevents rain from entering in bad weather and it cannot rust.



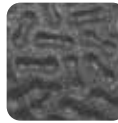
Cast iron top vent with rain cover

Cast iron material.
Adjustable rain cover cap.



Matt Surface Treatment

Avoid reflective interference, show unique temperament. Fine handfeeling, stable and restrained. More high-end looking.



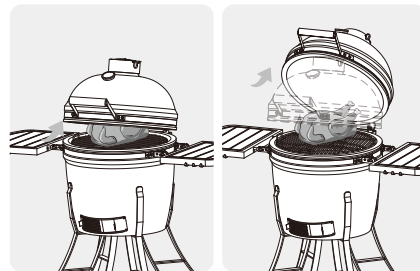
Bubble Glaze Surface Treatment

The specially treated bubble glaze has high durability, shines uniquely and is full of artistry, giving the product a more layered and three-dimensional feel.



Air Lift Hinge System

Lid can stay at any angle without dropping down
The most flexible & convenient system
Locker guarantee the perfect air tightness



Hinge with Protected Cover

Easy-open hinge system
Hinge with strong lifting power
Powder Coated Cover to protect springs better to resist rusted

Regular

Bamboo Handle



Using environmentally friendly materials--bamboo harms and easy to grasp.

Bamboo Side Table



Using environmentally friendly materials--bamboo harms and easy to grasp.

Felt gasket



High Heat Resistant Gasket
Preoxygenated Fiber

Fire box & Fire ring



High Heat resistant ceramic, more than 1000°C. Unique & Upgraded Formula make it more steady

Upgraded



Heavy Bamboo Handle

Much better resistance in cracking, mouldy than ply-bamboo. And remain the original wood color.



Wood Handle

Much better resistance in cracking, mouldy than ply-bamboo. And remain the original wood color.



Steel Handle

All Black steel with powder coating treatment. No cracking, no mouldy.



HDPE Plastic Handle

Black HDPE plastic with steel bracket with powder coating treatment. No cracking, no mouldy.



Heavy Bamboo Side Table

Much better resistance in cracking, mouldy than ply-bamboo. And remain the original wood color.



Steel Side Table

All Black steel with e-coating+powder coating double layer treatment. No cracking, no mouldy.



HDPE Plastic Side Table

Black HDPE plastic with steel bracket with e-coating +powder coating double layer treatment. No cracking, no mouldy.



Cast Aluminum Material

Smooth Surface & Nice Touch
More excellent on resisting mold



Fiberglass

More high heat resistant
Longer lifespan
S/S wire of inside, silica material of gasket



Multi-piece firebox

Lower after-sales cost on replacement
Safer transportation
More High-end Design & Stable Structure

Regular

Cooking Grill



Stainless Steel Cooking Grid,
6 mm diameter

Stand



Upgraded



Cooking System

Cooking System facilitates an extensive variety of cooking set up and expand your grilling surface. You could cook, ribs, whole roasts and chicken, vegetables, steaks, pizzas, and more all at once.



Cast Iron Cooking Grill

Perfect Grill for Searing
Superior Heat Conductivity



Stand-V

stainless stand,with
Anti-rust function easy to install



Stand-4A

Fashion design structural stability



Stand-4A+

With space to stock tools
More High-end Design & Stable
Structure



Stand-KJ

Abundant space to stock tools
Thicker & More Heavy Duty Stand
More Stable Design & Structure



Stand-T

Plenty of space
Integrated structure
large bearing capacity of side table



Stand-T+

Professional for Commercial Usage.
More Heavy Duty Stand 6 Inch
Wheels make it easy to be moved.
Abundant space to stock tools.
Stainless stand with anti-rust function

*Only carts

TEMPERATURE CONTROL

Hot Air Charcoal Lighter

Speed up the heating process of your coals so that your BBQ is ready for cooking in just a few seconds.



Charcoal Basket with Shared

Makes it easy to dispose of ashes and be ready for your next cook in seconds. The special separate grate design to brings the flexibility of two zone for grilling and smoking. Allows more free airflow, achieve high temperatures faster.



Charcoal Chimney Starter

Get your charcoal glowing and ready to go in just minutes. Quick-release makes starting your charcoal grill fast & easy. Fill the starter with charcoal & light it. The hottest charcoals even stay on the bottom for better heat distribution & more efficient grilling.



Air Blower

The air blower is the fastest way to start charcoals and to raise fire's temperature. With this installed on the bottom vent of your charcoal grill, you'll be ready to start cooking within 10 minutes. This electric bellows is much more effective than blowing air from your mouth, and you won't get smoky ash.



Luxurious Electric Lighter

Further shorten the time of igniting charcoal.



Instant-Read Food Thermometer

Used to accurately detect the internal temperature of food.



Wireless Digital Thermometer

Used to accurately detect the internal temperature of food.

COOKING ACCESSORIES



Versatile Cooking System

Cooking System facilitates an extensive variety of cooking set up and expand your grilling surface. You could cook, ribs, whole roasts and chicken, vegetables, steaks, pizzas, and more all at once.



Pizza Stone

Bake authentic, wood-fired, pizzeria-quality pizzas. High-impact ceramic stone distributes heat and absorbs excess moisture for a perfectly cooked pizza with a crispy crust.



Ceramic Heat Deflectors

Transforms your grill into an outdoor convection oven, diverts heat around the perimeter of the grill.



SS Heat Deflectors

Transforms your grill into an outdoor convection oven, diverts heat around the perimeter of the grill.



Half Moon Cast Iron Plate

Double sided griddle offers a smooth surface and a ribbed surface. Cast iron delivers excellent heat retention and is very sturdy.



Cooking Grid Expander

Increase the cooking area to two layers.



BBQ Rib Rack

Made of commercial-grade stainless steel for lasting quality. Rib rack design fits more ribs by cooking them vertically.



Chicken Sitter

Cook whole chickens with ease and flavour it to your liking. (beer, marinade, juice, etc.)



Rotisserie Kit

The rotisserie kit is a hassle free way to cook large roasts, chicken, and turkeys.

ROTISSERIE KIT

A great companion for BBQ

STYLE 1



Food Grade Stainless Steel Material:

Remium 304 grade stainless steel construction with non-stick surface, durable and rust resistant, which provides natural protection to keep your equipment safe, clean and healthy.

Healthy and Native Taste

The fry basket definitely makes what's inside nice and crisp without the unhealthy fat when frying foods.

Suitable for many types of food

Perfect for the preparation of small, finely chopped food like french fries, seafood, chicken wings and vegetables, cooking fish, hamburgers, sausages, etc.

STYLE 2



Food Grade Stainless Steel Material:

High quality 304 grade stainless steel construction for durability, durable and rust resistant, easier cleaning.

Effortless Rotisserie Cooking Experience

Enjoy an easy rotisserie cooking experience with our powerful 120V 4W motor. Assembly is easy. Rotation is constant, so food is being cooked evenly. No "over done" or "not done enough" food portions.

Durable

Featuring a durable offset prong orientation, these forks will accommodate a greater variety of loads without losing grip.

Easy to clean and maintain.

STYLE 3



Easy to use

Simply slide the kebabs onto the rotisserie for quick and easy setup.

Dishwasher safe

Rotisserie are made of high-grade stainless steel for durability, dishwasher safe.

SET CONTAINS

This kit comes with six (6) chrome plated skewers and two (2) rotisserie plates to hold the skewers in place.

FITS MOST ROTISSERIES

Fits most Spit rods, if you don't have a Napoleon barbecue grill you can still use this unique BBQ accessory. It is perfect for grilling koalas, lamb, chicken, steaks and vegetables.

BBQ TOOLS

Ash Box

To collect the ash and pour it out easily. It should be used with charcoal basket together.



Ash Drawer

With the ash drawer, it can allow you to clean the excess ash easily from your unit without stopping to let it cool down.



BBQ Lamp

It is suitable for lighting during night barbecue and also increases the atmosphere.



Rain Cover

Waterproof full rain cover to help keep you looking great.



Glove

High temperature resistant material to protect hands and prevent accidental burns.



Steam BBQ Cleaning Brush

The use of water and detergent makes it easier to clean the cooking grill.



BBQ Tool Set

Auxiliary tools for barbecue.



Cast iron grid plate Gripper

Designed by human mechanics to clip half moon cast iron grid/plate.



New Grid Gripper

Ergonomic design makes it easier to clip the cooking grill.



Roast Nets Clip

Labor-saving design, easy to move the grill.

