



WPC Floors Catalog



VINYLYL

- LVT
- Dry back
- Loose lay
- SPC
- WPC





	DRYBACK	LVT	SPC	WPC
2mm	√			
2.5mm	√			
3mm	√			
3.3mm		√	√	
4.0mm		√	√	
4.5mm		√	√	
5.0mm		√	√	
5.5mm		√	√	√
6.0mm			√	√
6.5mm			√	√
7.0mm			√	√
8.0mm			√	
Press Bevel				√
Painted Bevel			√	√
Padding			√	√
W*L	12"*24"(304.8*609.6mm)	7.5"*48"(190.5*1219.2mm)	7.5"*70"(190.5*1778mm)	
	18"*36"(457.2*914.4mm)	9"*48"(228.6*1219.2mm)	9"*70"(228.6*1778mm)	
	6"*36"(152.4*914.4mm)	7.5"*60"(190.5*1524mm)	48"*7.6"/5.7"/3.8"	
	7"*48"(177.8*1219.2mm)	9"*60"(228.6*1524mm)	(1220*194/145/96mm)	
	24"*24"(609.6*609.6mm)			



Dryback Collection

- 1 Wear layer with UV coating
- 2 Decor film
- 3 PVC core

The Dryback Collection of vinyl flooring brings the beauty of nature into your home, providing an array of advantages at the same time. Top quality and long-lasting, these floorings are designed with both style and durability in mind.

Their 100% water resistance also opens up endless home makeover possibilities, allowing you to install flooring that looks just like solid wood in bathroom or kitchen. This glue-down installation method brings peace of mind that your new flooring will perform perfectly over time and provide superior stability.



LVT Collection

- 1 Wear layer with UV coating
- 2 Decor film
- 3 Vinyl layers
- 4 Click system
- 5 Fibre glass
- 6 Vinyl layers

LVT Flooring has the power to bring a home to life with their distinct style and quality, while adding durability to any room. The flooring comes in a range of realistic styles so you can easily achieve the look you want, while simultaneously adding warmth underfoot. It's never been easier to make a statement with your flooring.

Wood collection

Dryback

1219.2*152.4*2.0mm

24 pcs/ctn

48 ctns/pallet

24 pallets/20ft container



1219.2*152.4*2.0mm



1219.2*152.4*2.0mm



1219.2*152.4*2.0mm

LVT

1219.2*177.8*4.0mm

12 pcs/ctn

60 ctns/pallet

20 pallets/20ft container



1219.2*177.8*4.0mm



1219.2*177.8*4.0mm



1219.2*177.8*4.0mm

SPC



SPC Collection

- ① Wear layer with UV coating
- ② Decor film
- ③ SPC core
- ④ Click system
- ⑤ Padding (optional)

SPC (Stone Plastic Composite) Flooring is a massive technical upgraded, enhanced vinyl plank with an advanced generation and improvement of LVT dick flooring more greater density and solid dick strength. SPC Flooring is made of high polymer materials as the primary raw material, after high temperature rolling, the surface wear layer is produced away from formaldehyde and heavy metals and harmful substances. it have effect of waterproof, moisture-proof, antibiosis, anti-slip, wear-resistant, fire-resistant.



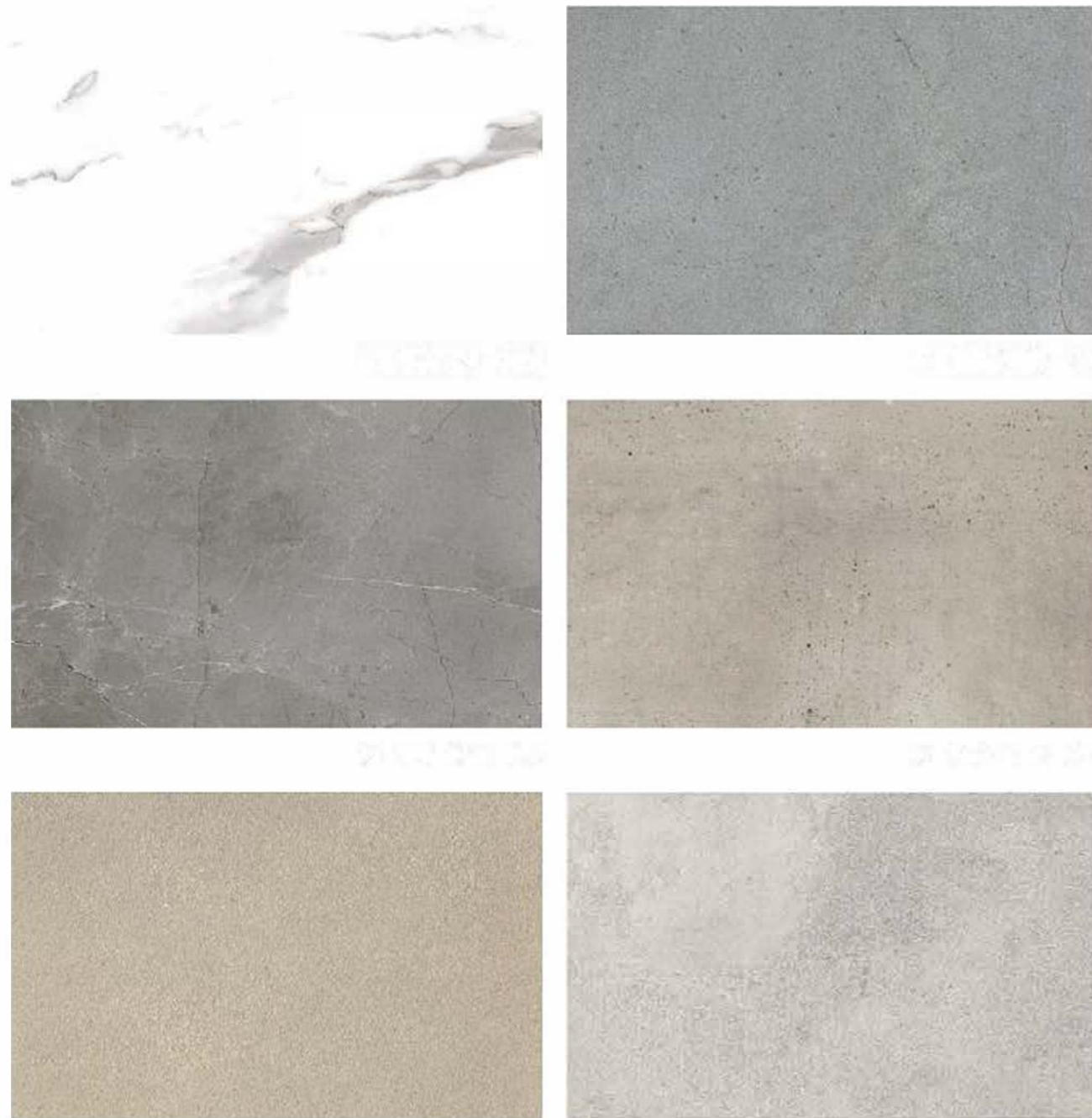
Stone collection

914.4*457.2*4mm

8 pcs/ctn

40 ctns/pallet

20 pallets/20ft container



Wood collection

1219.2*177.8*4.0mm

1mm EVA

10 pcs/ctn

60 ctns/pallet

20 pallets/20ft container



Wood collection



WPC



WPC Collection

- 1 Wear layer with UV coating
- 2 Decor film
- 3 PVC layer
- 4 Click system
- 5 WPC core
- 6 Padding(Optional)

WPC vinyl flooring is an engineered luxury vinyl plank flooring option. WPC is considered as typically 100% waterproof, resilience and stable composite material.

When it comes to vinyl flooring, WPC, which stands for waterproof plastic composite, is an engineered vinyl plank that gives you a luxury flooring option for your home. This is a relatively new product on the market, and benefits from its technologically advanced construction. The majority of WPC range in thickness from 5.5mm to 7 mm. WPC flooring benefits from a foamed core which makes it softer underfoot.



Wood collection

1219.2*127*7.0mm

1mm IXPE

10 pcs/ctn

77 ctns/pallet

20 pallets/20ft container



W20201



W20202



W20203



W20204





ENGINEERED Collection

- 1 Veneer
- 2 Multi-layer plywood
- 3 Tongue and Groove/Click system
- 4 Supporting layer

Engineered flooring is both durable and resistant to changes in humidity. The flooring is made from different species of wood layered together with a top layer of hardwood veneer. Due to the way it is made, engineered flooring is exceptionally strong and durable.

Engineered flooring applies multi-layer construction which is more stable and this means it's not as prone to shrinking or warping with changed in environmental conditions.



Nature wood

1860*190*12.0mm

8 pcs/ctn

45 ctns/pallet

12 pallets/20ft container



25024



25025



25026



25027



25028



Nature wood



Laminate



Laminate Collection

- ① Wear layer
- ② Decor paper
- ③ HDF coreboard
- ④ Click system&V-groove
- ⑤ Balance paper

Eco-friendly laminate flooring is made by wood-patterned paper and HDF boards. It's designed to replicate the natural color, grain and texture of real hardwood. Laminate flooring is most mature product line, so you are assured with high quality and stable performance. Moreover, we are developed with water resistant HDF core to support more customer request.

WATERPROOF LAMINATE FULLY STANDS UP TO MOISTURE



Worry-Free Waterproof Laminate Floors Work for Any Room in Your Home Waterproof laminate flooring allows the look and feel of authentic hardwood without the worry. Waterproof laminate is durable, easy to maintain, and offers a wide variety of styles, making it a great solution for any room in the home.

Laminate

1212*195*12mm

6 pcs/ctn

60 ctns/pallet

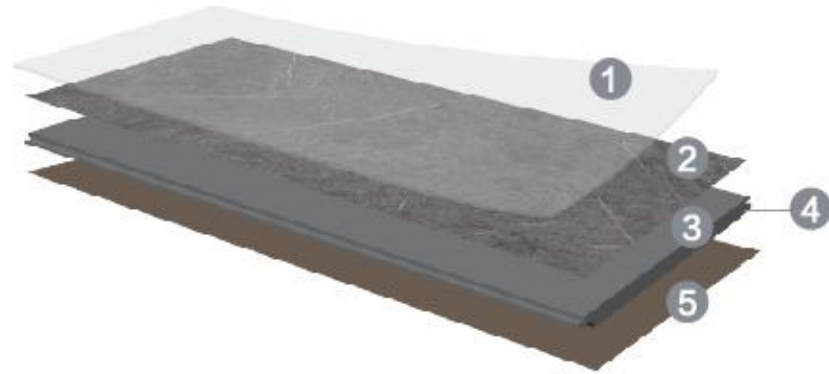
18 pallets/20ft container



*the Elegance
everyday
in your life*

Fixed Length	Random Length	Fixed Width	Random Width	Thickness
1220mm	1200/750/450mm	298mm	91/126/161mm	8mm
2200mm	1206/683/583mm	190mm	91/142/193mm	10mm
	1820/1210/610mm	165mm		12mm
		145mm		
		125mm		
		90mm		

P-MgO



Paper+MgO Board

- 1 Wear layer
- 2 Decor paper
- 3 MgO Board
- 4 Click system & V-groove
- 5 Balance paper

- Non PVC
- High Density Mineral core
- 100% waterproof
- Extra rigid Support
- Kid proof and Pet proof
- Anti-microbial and Mould proof
- Hard surface with good scratch

V-MgO



Wood Veneer +MgO Board

- 1 UV Coating
- 2 Wood Veneer
- 3 MgO Board
- 4 Click system
- 5 Balance layer

- Mothproof or moth resistance. Alkalescency
- Green and environmental protection
- Sound and thermal insulation
- Size stability is better than WPC
- Has characters of degradation
- No formaldehyde for Mineral core
- Fire resistance level A for Mineral core

Stone collection



Wood collection



18324-20

18324-20



Molding



PVC flooring accessories include PVC skirting board, Flush Stair Nose, T-molding, End cap, Reducer, Staimose etc. It is fireproof, waterproof, environmental friendly, easy setting and cleaning, not easily deformed, wear resistant, high intensity, sound insulation, resist erosion, anti aging.



T- molding
T-Moldings are commonly used in doorways to join two floors in adjoining rooms.



Stair Nose
Stair Nose combines style and function to enhance the beauty of a staircase or step.



Skirting board
Skirting board is used around the edge of the room to hide the expansion gap between flooring and wall.



Reducer
Reducer is used to create a smooth transition between two floors of different heights, as well protect the planks.



Flush Stair Nose
Flush Stair Nose can join your SPC/WPC flooring directly with the click system.



End Cap
End cap is used as the finishing touch of the flooring edge at outside doors. We can match end cap moulding with the color of your floor.

Tests

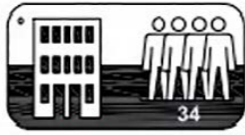
General requirement:

Characteristics	Test results	Verdict
Overall thickness (mm)	5.11	Pass
Length (mm)	1219.94	Pass
Width (mm)	148.01	
Squareness (mm)	0.12	Pass
Staightness (mm/m)	0.12	Pass
Flatness length (%)	0.04	Pass
Flatness width (%)	0.14	Pass
Joint openings average value (mm)	0.03	Pass
Joint openings maximum value (mm)	0.04	
Height differences average value (mm)	0.04	Pass
Height differences maximum value (mm)	0.05	

Classification requirements:

Characteristics	Test results	Classification
Wear resistance (method A)	4200 cycles	Class 34
Wear resistance (method B)	≥ 7000 cycles	Class 34
Micro-scratch resistance	MSR-A2; MSR-B1	Class 34
Castor chair resistance	25000 cycles	Class 34
Effect of furniture leg	no visible damage	Class 34
Residual indentation	0.03	Class 34
Resistance to staining	0.1	Class 34
Swelling	0.1	Class 34
Longitudinal joint Maximum Locking strength F_{max} (N)	2152	Class 34
Transverse joint Maximum Locking strength F_{max} (N)	677	Class 34
Dimensional stability due to variation of temperature	≤0.05	Class 34

Level of use class:

Class	Symbol	Intensity of use
34		Commercial Very heavy

