

# Security Catalog



# X-ray Baggage Scanner

X-ray Baggage Scanner offers advanced switchable 4/7-colors imaging technology.

Shows images in 7 colors, enables users to achieve optimal material identification by allowing them to view screened objects in 7 colors, each color correcting to a specific



## High-Performance

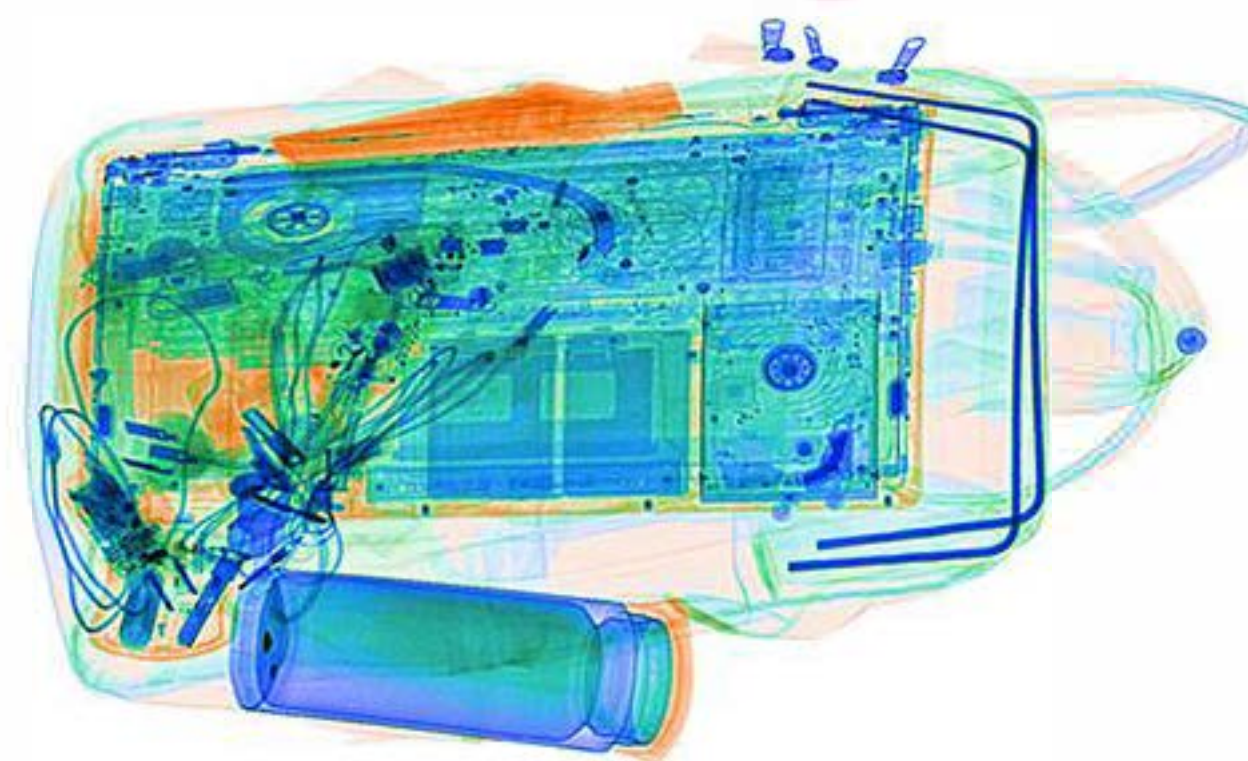
## 7-Colors

## 3-Screen

### Raises the standard For X-ray Screening Systems

- ✓ Switchable 4/7 Colors Imaging
- ✓ Real-time Imaging Processing
- ✓ Automatic Density Alert for Weapons
- ✓ Organics & Inorganic & Mixture Striping
- ✓ Hazard Liquid Assistant Detection
- ✓ Explosive and Drug Assistant Detection
- ✓ Thin Object Scanning, Splitting Scanning

In addition, 7-colors and Z-scan are designed to help operators detect a range of dangerous liquid, explosives and narcotics respectively in real time by marking a potential threat on the X-ray image



## More Options

Our products are suitable for a variety of places. From offices to customs, as small as scanning mail and documents, as large as scanning large cargo. We have designed compact ranges and large-size X-ray scanners.

Depending on the object's size, these x-ray machine models are different from the tunnel size from 43cm x 33cm to 100cm x 100cm.



### Mail Scanner

Tunnel Size: 436(W)x331(H)mm  
Convey Max Load: 150kg  
Dimensions: 1344(L)x781(W)x983(H)mm

### Bag Scanner

Tunnel Size: 510(W)x310(H)mm  
Convey Max Load: 150kg  
Dimensions: 1359(L)x831(W)x1180(H)mm

Tunnel Size: 654(W)x508(H)mm  
Convey Max Load: 165kg  
Dimensions: 1691(L)x985(W)x1275(H)mm

Tunnel Size: 556(W)x360(H)mm  
Convey Max Load: 150kg  
Dimensions: 1359(L)x877(W)x1230(H)mm

Tunnel Size: 624(W)x429(H)mm  
Convey Max Load: 165kg  
Dimensions: 1499(L)x947(W)x1340(H)mm

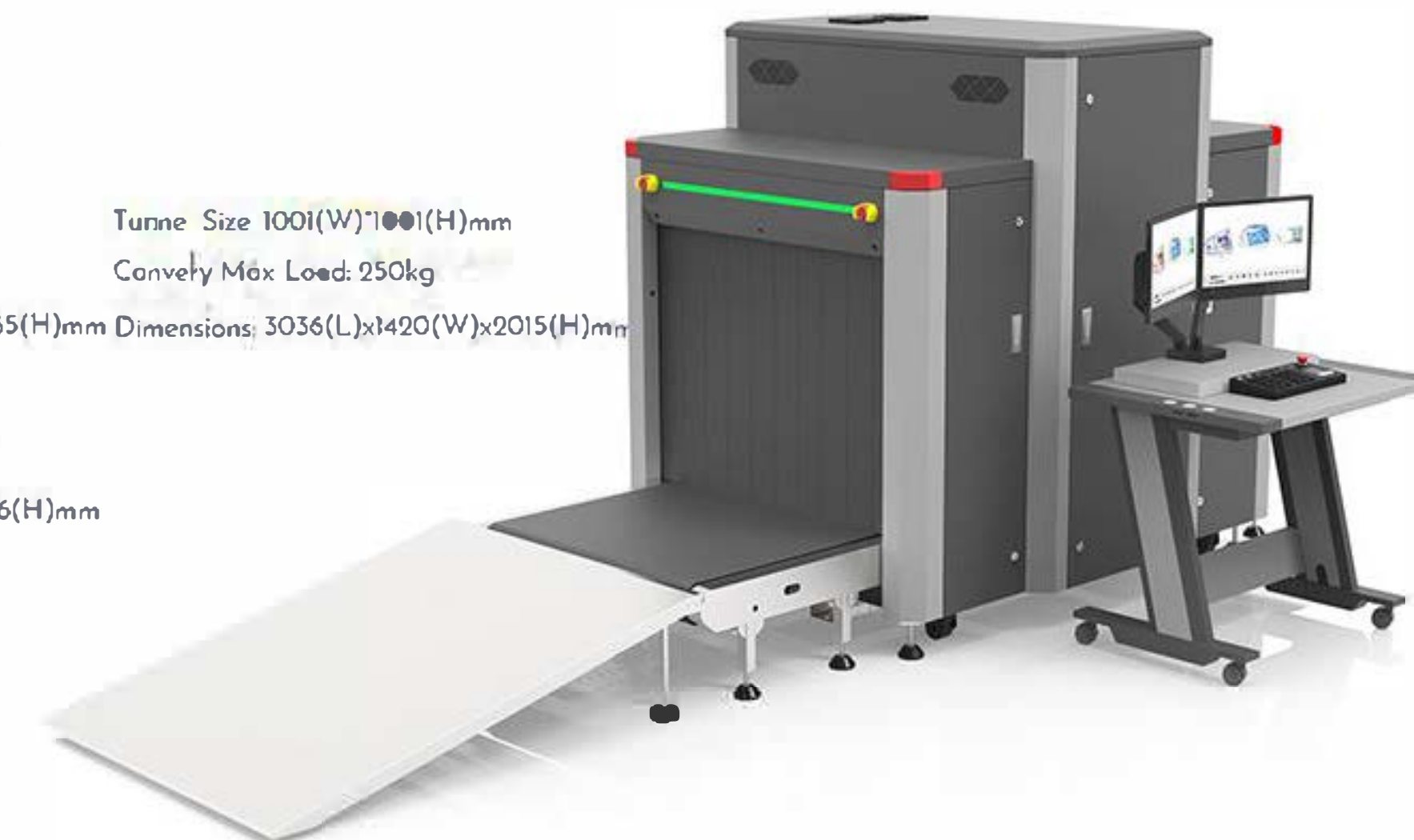


### Cargo Scanner

Tunnel Size: 801(W)x660(H)mm  
Convey Max Load: 200kg  
Dimensions: 2736(L)x1050(W)x1465(H)mm

Tunnel Size: 1001(W)x1001(H)mm  
Convey Max Load: 250kg  
Dimensions: 3036(L)x1420(W)x2015(H)mm

Tunnel Size: 1006(W)x804(H)mm  
Convey Max Load: 250kg  
Dimensions: 3146(L)x1292(W)x1706(H)mm



# Dual View Baggage Scanner

Dual View X-ray Baggage Scanner with 2 X-ray Generators can scan and image objects from both horizontal and vertical angles at the same time, avoiding missed inspections caused by overlapping and occlusion of objects

## Dual Energy

Adopting dual-energy detection system with L-Shaped Detector Line to support material discrimination.

## Dual Vision

Horizontal and vertical viewing angles avoid the interference of image overlay and occlusion.

## Dual Image

Producing two simultaneous more complete images of the scanned objects.



## Bag Scanner

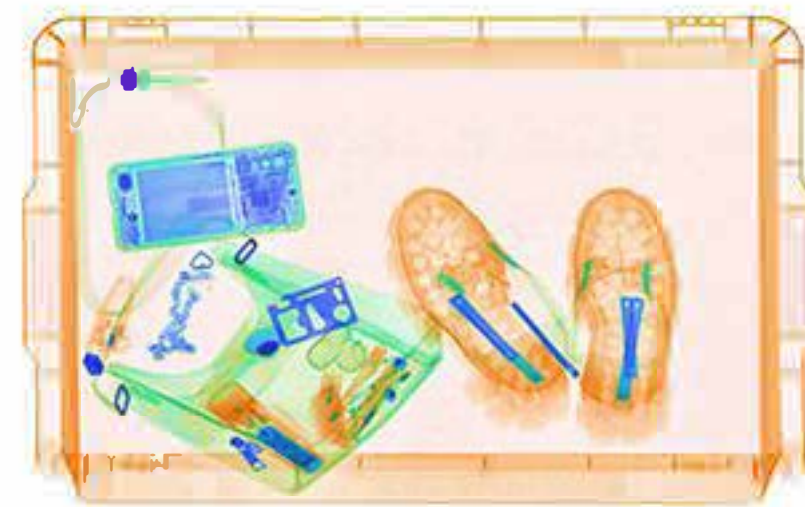
Tunnel Size: 654(W)x508(H)mm  
Convey Max Load: 165kg  
Dimensions: 1691(L)x985(W)x1275(H)mm

Tunnel Size: 754(W)x558(H)mm  
Convey Max Load: 165kg  
Dimensions: 2590(L)x1450(W)x1512(H)mm

# Easier To See More Contraband

Dual-view X-ray baggage scanner can offer two 7-colors imaging from two angles at the same time.

So that makes it easy for the operator to identify threats on screen.



Bottom Up View  
(Common X-ray Scanner)



Side View  
(Dual X-ray Scanner Only)



## Cargo Scanner

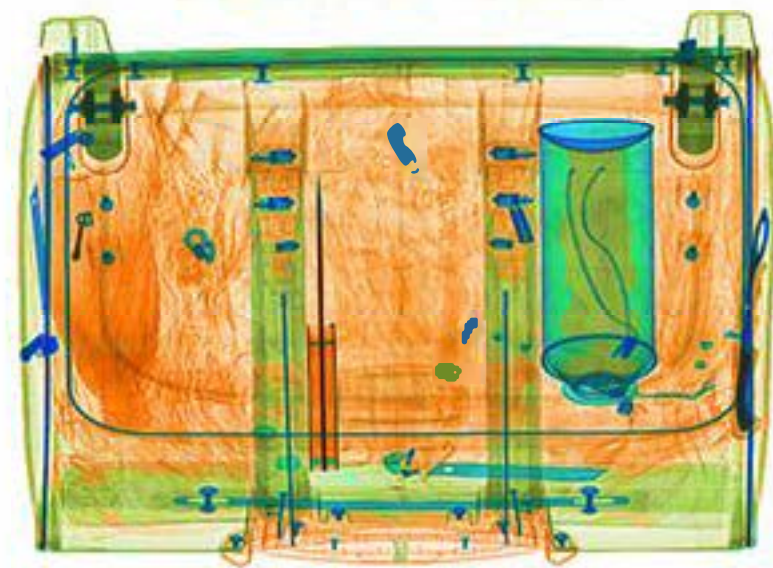
Tunnel Size: 1001(W)x1001(H)mm  
Convey Max Load: 250kg  
Dimensions: 3036(L)x1420(W)x2015(H)mm

# 3-D X-ray Baggage Scanner

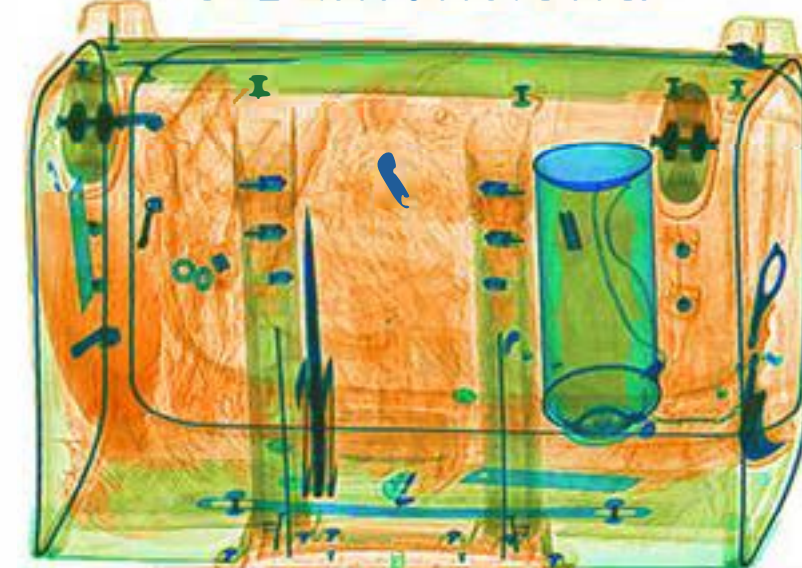
The innovative technology of 3-D Perspective Technology with 7 Colors Imaging System, Screeners can see most threats from a holistic view.

Malicious people are improving their techniques to avoid detection in existing X-ray scanners. So our methods must also evolve.

Vertical View



3-Dimensional



## Bag Scanner

Tunnel Size: 556(W)x360(H)mm  
Convey Max Load: 150kg  
Dimensions: 1359(L)x877(W)x1230(H)mm

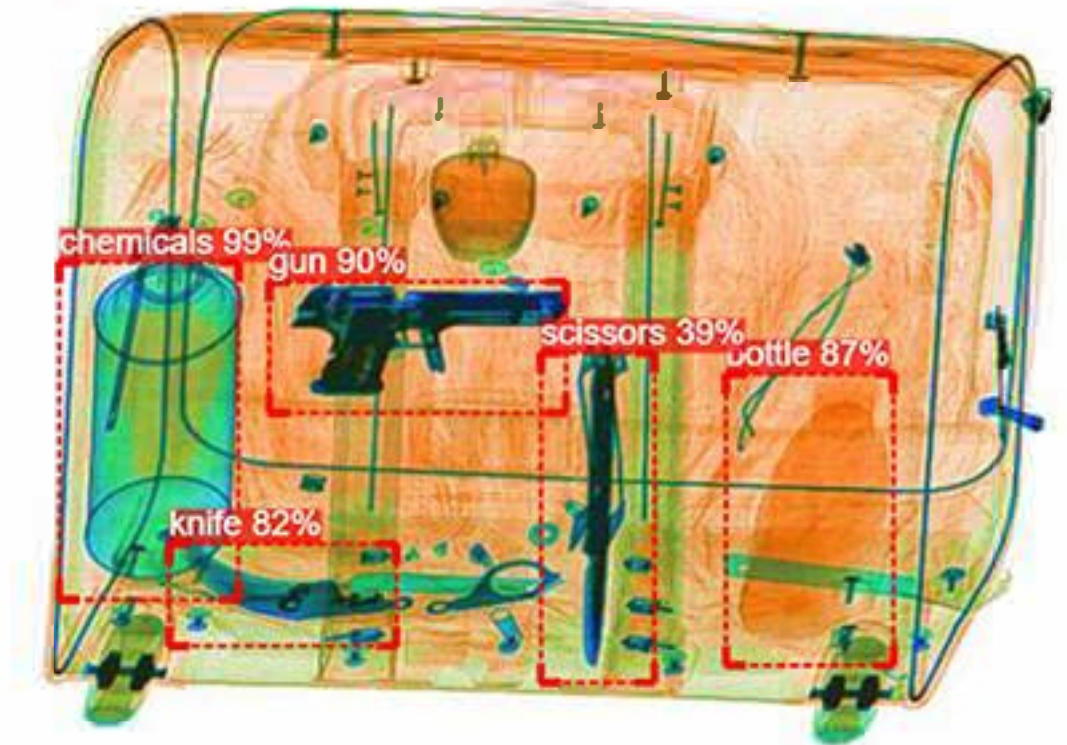
Tunnel Size: 624(W)x429(H)mm  
Convey Max Load: 165kg  
Dimensions: 1499(L)x947(W)x1340(H)mm



# AI Object Recognition System

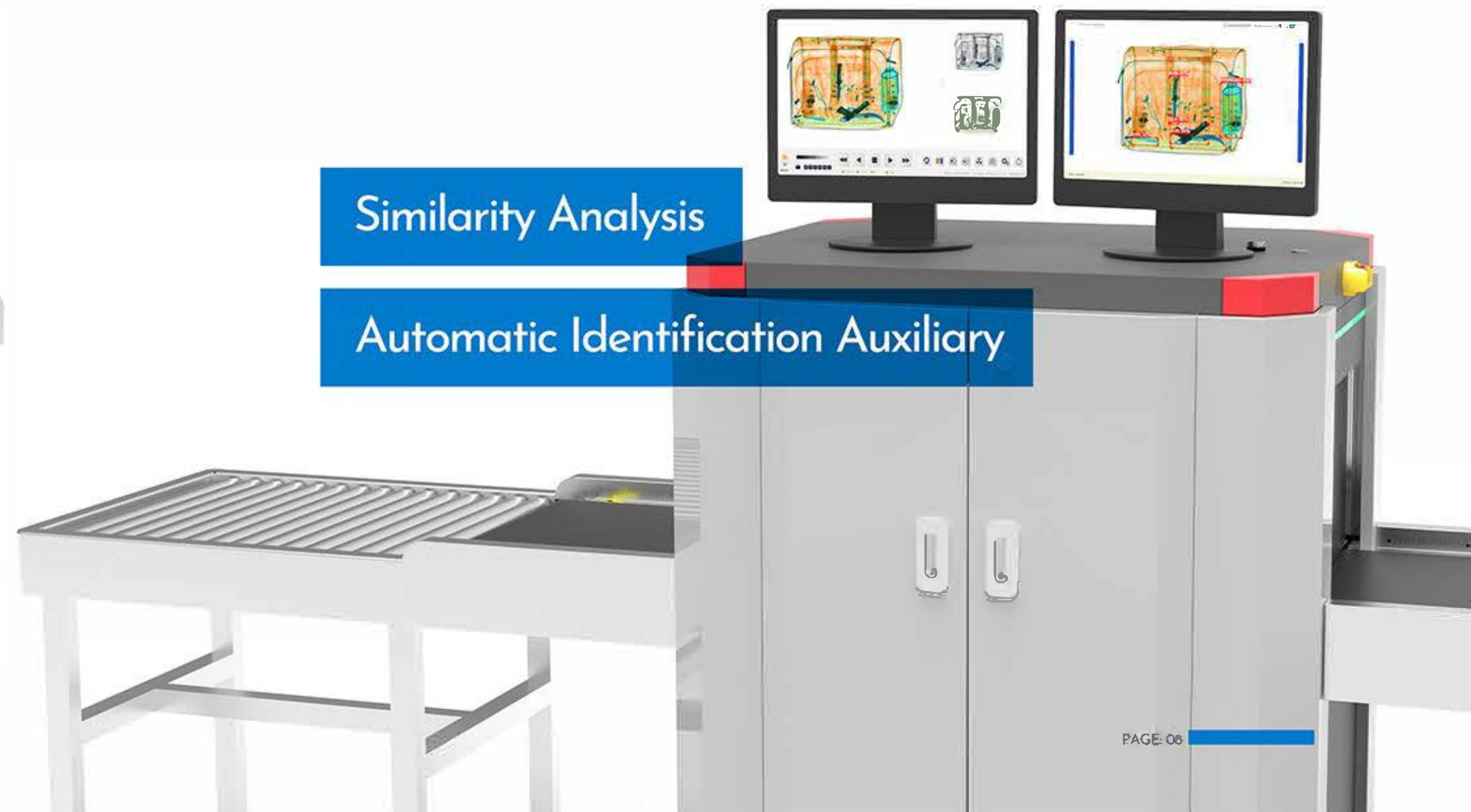
Use the AI system to assist in detecting the danger of packages, identification and similarity determination of items.

It deeply learns the image recognition kit of X-Ray inspection machine, which can accurately point out prohibited items quickly and effectively reduce security inspection costs and improve the inspection efficiency.



Similarity Analysis

Automatic Identification Auxiliary



# Walk-Through Metal Detector

## For Security Inspection In Important Locations

Safeagle® Walk-Through Metal Detector adopts a mini controller, which is more convenient for maintenance and installation.

Meets international regulatory requirements for electromagnetic safety. Successfully achieved completely harmless to pregnancy, patients, and medical equipment.

Support expansion functions

- PC Remote Control Software(via wire or wireless)
- Turnstile Connection
- Removable Wheel Accessory
- Other Customized Functions



Detecting Zones: 33  
Sensitivity: 1000 levels  
Display: LCD resistive touch screen  
Channel Size: 2000(H)x830(W)mm  
Thickened Panels: 7cm

### FEATURES

## Some Great Features That We Have

Traditional rule-based detection and single-function devices and systems have been unable to effectively deal with increasingly serious security threats



Simultaneous detection for multi metal targets



Unmatched anti-interference performance



Full-module design for easy and rapid assembly



Bi-directional detection and counter



Detecting Zones: 5  
Sensitivity: 255 levels  
Display: LCD resistive touch screen  
Bilateral Detect Distance: 0.15m  
Size: 1890(H)x440(W)mm



Detecting Zones: 6/18(Optional)  
Sensitivity: 255 levels  
Display: LED digital display  
Channel Size: 2000(H)x760(W)mm



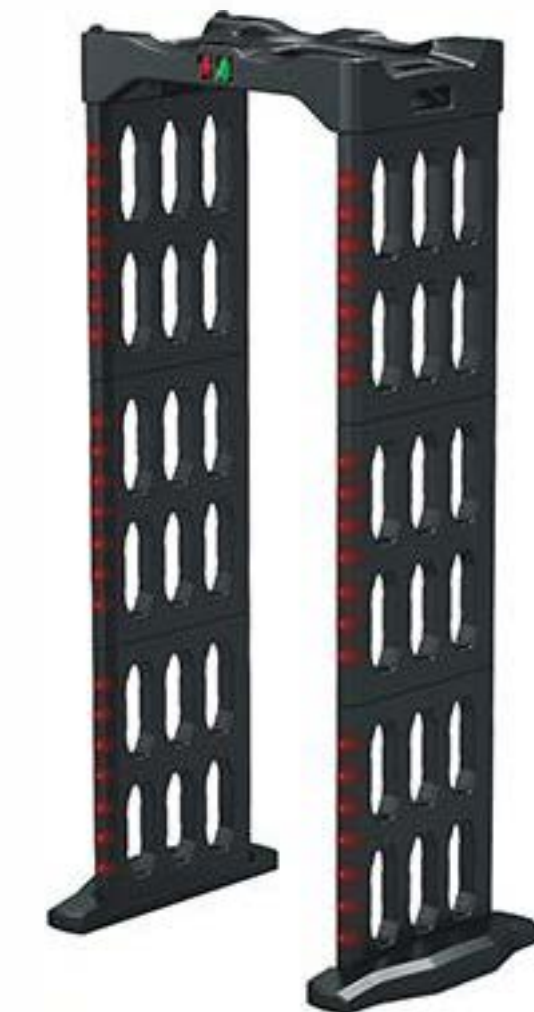
Detecting Zones: 8/16/24(Optional)  
Sensitivity: 255 levels  
Display: LED digital display  
Channel Size: 2000(H)x830(W)mm



Detecting Zones: 33/60  
Sensitivity: 1000 levels  
Display: LCD resistive touch screen  
Channel Size: 2010(H)x760(W)mm



Detecting Zones: 33/60  
Sensitivity: 1000 levels  
Display: LCD resistive touch screen  
Channel Size: 2010(H)x760(W)mm



Detecting Zones: 6/12/18  
Sensitivity: 300 levels  
Display: LCD resistive touch screen  
Channel Size: 2120(H)x790(W)mm

# Hand-Held Metal/Liquid/Explosive Detector

Hand-held detectors are designed to detect metal objects carried by people, explosives or small metal objects contained in parcels, luggage, letters, fabrics, etc.  
Proven to accurately detect concealed metallic items.



**Hand-held Explosive Detector**  
Net Weight: 1.65 kg  
Dimensions: 244(L)X144(W)X50(H)mm  
Technology: Fluorescent Polymer Sensing Technology(without radioactive source)



**Hand-held Metal Detector**  
Net Weight: 265g  
Dimensions: 360(L)X75(W)X45(H)mm

## Accurately Locate Potential Threats

Hand-held metal detectors give alarms for metal objects with an audible and visual alarm, vibration alarm, or through earphones.

It is used to check the specific position of the metal carried by the person, and it can also be used with the Walk-through Metal Detector, rechecking by Walk-through Metal Detector to find the exact location of the hidden metal objects when it alarms.



**Hand-held Metal Detector**  
Net Weight: 170g  
Dimensions: 295(L)X68(W)X25(H)mm



**Hand-held Metal Detector**  
Net Weight: 225g  
Dimensions: 375(L)X75(W)X25(H)mm



**Hand-held Metal Detector**  
Net Weight: 500g  
Dimensions: 410(L)X80(W)X45(H)mm  
3 Detection Modes: Mixture, Magnetic metal, Nonmagnetic metal



**Hand-held Metal Detector**  
Net Weight: 265g  
Dimensions: 410(L)X80(W)X25(H)mm



**Hand-held Metal Detector**  
Net Weight: 345g  
Dimensions: 410(L)X85(W)X45(H)mm



**Hand-held Metal Detector**  
Net Weight: 665g  
Dimensions: 340(L)X80(W)X40(H)mm



**Hand-held Explosive Detector**  
Net Weight: 4.6 kg  
Dimensions: 435(L)X133(W)X210(H)mm  
Technology: Gas Chromatography Ion mobility and spectrometry (IMS)



**Desktop Liquid Detector**  
Net Weight: 12 kg  
Dimensions: 460(L)X350(W)X190(H)mm  
Technology: Microwave reflection and Thermal conductivity method

## DETECTOR FOR SECURITY CHECK

Applicable to all scenarios



Airport



Subway



Capital Building



Hospital



School



Factory



Prison