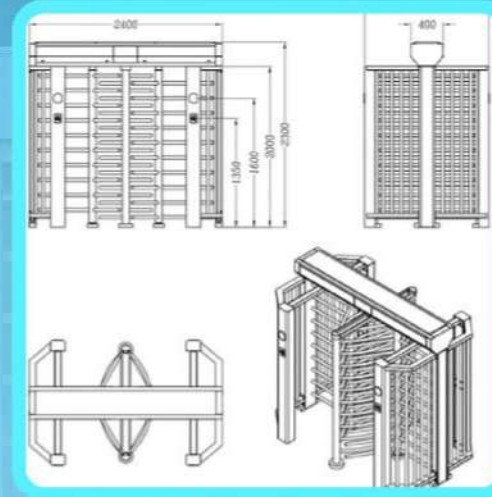


Security Gates Catalog



Double passage full height gate



- Molding full height turnstile movement;
- Low noise, smooth operation and long service life;
- The LED indicator light prompts that valid cards are displayed in green and illegal cards are displayed in red;
- With automatic reset function;
- It has a unified and standard external electrical interface to facilitate system integration;
- Can be expanded to implement functions such as access control, attendance, and charging;
- A variety of working modes are available.
- Scope of application: prisons, construction sites, communities, etc.

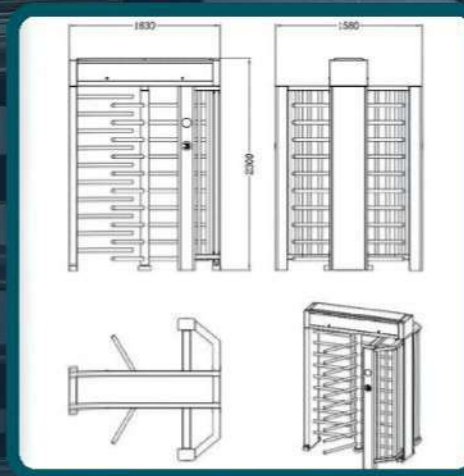
TECHNICAL PARAMETERS

SIZE	2400*1580*2300mm
MATERIAL	thickness 1.2/1.5 mm, 304 stainless steel
UNLOCK TIME	0.2s
PASSING SPEED	35p/m
CHANNEL WIDTH	650mm
INPUT VOLTAGE	AC100-240V
AMBIENT TEMPERATURE	—15-55°C
POWER	35W
OPENING SIGNAL INPUT	dry contact

Single passage full height gate



PAGE 37



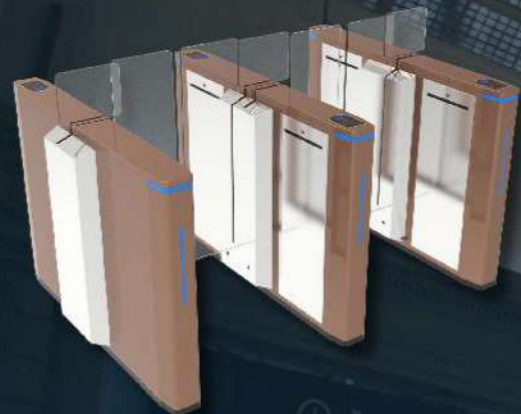
- Molding full height turnstile movement;
- Low noise, smooth operation and long service life;
- The LED indicator light prompts that valid cards are displayed in green and illegal cards are displayed in red;
- With automatic reset function;
- It has a unified and standard external electrical interface to facilitate system integration;
- Can be expanded to implement functions such as access control, attendance, and charging;
- A variety of working modes are available.
- Scope of application: prisons, construction sites, communities, etc.

TECHNICAL PARAMETERS

SIZE	1630*1580*2300mm
MATERIAL	thickness 1.2/1.5 mm, 304 stainless steel
UNLOCK TIME	0.2s
PASSING SPEED	35p/m
CHANNEL WIDTH	650mm
INPUT VOLTAGE	AC100-240V
DRIVE VOLTAGE	24V
AMBIENT TEMPERATURE	-15-55°C
POWER	35W
OPENING SIGNAL INPUT	dry contact

PAGE 38

SLIDING GATE



- 1) BRUSHLESS MOTOR, 6 PAIRS OF INFRARED SENSORS;
- 2) THE POWER-OFF DOOR SWING CAN BE OPENED DIRECTLY TO MEET THE NEEDS OF FIRE ESCAPES;
- 3) ANTI-TRAILING AND ANTI-PASSBACK CAPABILITIES;
- 4) WITH AUTOMATIC RESET AND INFRARED ANTI-PINCH FUNCTIONS;
- 5) MULTIPLE WORKING MODES ARE AVAILABLE;
- 6) SCOPE OF APPLICATION: CAMPUS, COMMUNITY, ETC.
- 7) OPTIONAL THREE-COLOR LIGHTS/MARQUEE/BREATHING LIGHTS
- 8) VARIOUS COLORS CAN BE CUSTOMIZED BY STAINLESS STEEL + IRON PLATE SPRAYING

TECHNICAL PARAMETERS

SIZE	1630*1580*2300mm
MATERIAL	thickness 1.2/1.5 mm, 304 stainless steel
UNLOCK TIME	0.2s
PASSING SPEED	35p/m
CHANNEL WIDTH	650mm
INPUT VOLTAGE	AC100-240V
DRIVE VOLTAGE	DC24V
AMBIENT TEMPERATURE	-15-55°C
POWER	35W
OPENING SIGNAL INPUT	dry contact

- 1) BRUSHLESS MOTOR, ACRYLIC BAFFLE, 5 PAIRS OF INFRARED SENSORS;
- 2) THE GATE WOULD BE AUTOMATICALLY OPEN WHEN POWER OFF TO MEET THE NEEDS OF FIRE ESCAPE;
- 3) ANTI-TRAILING AND ANTI-PASSBACK CAPABILITIES;
- 4) WITH AUTOMATIC RESET AND INFRARED ANTI-PINCH FUNCTIONS;
- 5) MULTIPLE WORKING MODES ARE AVAILABLE;
- 6) SCOPE OF APPLICATION: CAMPUS, COMMUNITY, ETC.

TECHNICAL PARAMETERS

SIZE	1400*300*980mm
MATERIAL	thickness 1.2/1.5 mm, 304 stainless steel
UNLOCK TIME	0.2s
PASSING SPEED	35p/m
CHANNEL WIDTH	550mm
INPUT VOLTAGE	AC100-240V
DRIVE VOLTAGE	DC24V
OPENING SIGNAL INPUT	dry contact



HALF HEIGHT GATE



1. REASONABLE AND RELIABLE DESIGN, LOW NOISE, SMOOTH OPERATION AND LONG SERVICE LIFE;
2. USE OUR SPECIAL ORGANIC CORE TO EFFECTIVELY ENHANCE THE USE EXPERIENCE;
3. IT HAS ANTI-TRAILING AND ANTI-SNEAKING FUNCTIONS;
4. IT HAS A UNIFIED AND STANDARD EXTERNAL ELECTRICAL INTERFACE TO FACILITATE SYSTEM INTEGRATION;
5. CAN BE EXPANDED TO IMPLEMENT FUNCTIONS SUCH AS ACCESS CONTROL, ATTENDANCE, AND CHARGING;
6. A VARIETY OF WORKING MODES ARE AVAILABLE.

TECHNICAL PARAMETERS

SIZE	1400*1300*1100MM
MATERIAL	thickness 1.2/1.5 mm, 304 stainless steel
UNLOCK TIME	0.2S
PASSING SPEED	35P/M
CHANNEL WIDTH	600MM
INPUT VOLTAGE	AC100-240V
DRIVE VOLTAGE	DC24V
AMBIENT TEMPERATURE	-15-55°C
POWER	35W
OPENING SIGNAL INPUT	dry contact

1. REASONABLE AND RELIABLE DESIGN, LOW NOISE, SMOOTH OPERATION AND LONG SERVICE LIFE;
2. USE OUR SPECIAL ORGANIC CORE TO EFFECTIVELY ENHANCE THE USE EXPERIENCE;
3. IT HAS ANTI-TRAILING AND ANTI-SNEAKING FUNCTIONS;
4. IT HAS A UNIFIED AND STANDARD EXTERNAL ELECTRICAL INTERFACE TO FACILITATE SYSTEM INTEGRATION;
5. CAN BE EXPANDED TO IMPLEMENT FUNCTIONS SUCH AS ACCESS CONTROL, ATTENDANCE, AND CHARGING;
6. A VARIETY OF WORKING MODES ARE AVAILABLE.

TECHNICAL PARAMETERS

SIZE	1400*1300*1100MM
MATERIAL	thickness 1.2/1.5 mm, 304 stainless steel
UNLOCK TIME	0.2S
PASSING SPEED	35P/M
CHANNEL WIDTH	600MM
INPUT VOLTAGE	AC100-240V
DRIVE VOLTAGE	DC24V
AMBIENT TEMPERATURE	-15-55°C
POWER	35W
OPENING SIGNAL INPUT	dry contact



SPEED GATE

- 1.12MM ARTIFICIAL MARBLE + COMPLETE MACHINE LASER 1.5MM SUS304
2. LASER CUTTING OF THE BOX;
3. PRECISION WELDING AND PRECISION GRINDING PROCESS;
4. ORIGINAL WIRE DRAWING ON THE SURFACE;
5. INFRARED ANTI-PINCH PROTECTION;
6. INFRARED ALARM FOR ILLEGAL INTRUSION;
7. REVERSE REVERSE ALARM FOR SWIPING THE CARD TO OPEN THE GATE;
8. DOMESTIC BRAND BRUSHLESS MOTOR
9. DOMESTIC FIRST-LINE BRAND CIRCULAR INFRARED 6 PAIRS
10. INTERNATIONAL FIRST-CLASS POWER SUPPLY + LED LIGHT STRIP
11. DOMESTIC FIRST-LINE BRAND 80MM OUTER DIAMETER CLUTCH
- 12.10MM TRANSPARENT ACRYLIC BAFFLE-PARTITION
13. STANDARD SPEED PASS MOVEMENT

TECHNICAL PARAMETERS

SIZE	1400*300*980mm
MATERIAL	thickness 1.2/1.5 mm, 304 stainless steel
UNLOCK TIME	0.2s
PASSING SPEED	35p/m
CHANNEL WIDTH	600mm
INPUT VOLTAGE	AC100-240V
DRIVE VOLTAGE	DC24V
AMBIENT TEMPERATURE	-15-55°C
POWER	35W
OPENING SIGNAL INPUT	dry contact

1. MATERIAL: 1.5MM SUS304+1.5MM COLD PLATE SPRAYING
2. ORIGINAL BRUSHED STAINLESS STEEL SURFACE;
3. INFRARED ANTI-PINCH PROTECTION;
4. INFRARED ALARM FOR ILLEGAL INTRUSION;
5. REVERSE REVERSE ALARM FOR SWIPING THE CARD TO OPEN THE GATE;
6. DOMESTIC BRAND SERVO MOTOR
7. DOMESTIC FIRST-LINE BRAND CIRCULAR INFRARED 6 PAIRS
8. INTERNATIONAL FIRST-CLASS POWER SUPPLY + LED LIGHT STRIP
9. DOMESTIC FIRST-LINE BRAND 80MM OUTER DIAMETER CLUTCH
- 10.10MM TRANSPARENT ACRYLIC BAFFLE PLUS PARTITION
11. STANDARD SPEED PASS MOVEMENT

TECHNICAL PARAMETERS

SIZE	1500*150*980mm
UNLOCK TIME	0.2s
PASSING SPEED	35p/m
CHANNEL WIDTH	600mm
INPUT VOLTAGE	AC100-240V
DRIVE VOLTAGE	DC24V
AMBIENT TEMPERATURE	-25-70°C
POWER	35W
OPENING SIGNAL INPUT	dry contact

SWING TURNSTILE

- 1) BRUSHLESS MOTOR, ACRYLIC BAFFLE, 12MM BLACK MARBLE UPPER COVER, 5 PAIRS OF INFRARED SENSORS;
- 2) THE GATE WOULD BE AUTOMATICALLY OPEN WHEN POWER OFF TO MEET THE NEEDS OF FIRE ESCAPES;
- 3) ANTI-TRAILING AND ANTI-PASSBACK CAPABILITIES;
- 4) WITH AUTOMATIC RESET AND INFRARED ANTI-PINCH FUNCTIONS;
- 5) MULTIPLE WORKING MODES ARE AVAILABLE;
- 6) SCOPE OF APPLICATION: CAMPUS, COMMUNITY, OFFICE BUILDING, ETC.

TECHNICAL PARAMETERS

SIZE	1200*185*980mm
MATERIAL	thickness 1.2mm, 304 stainless steel
UNLOCK TIME	0.2s
PASSING SPEED	35p/m
CHANNEL WIDTH	600mm
INPUT VOLTAGE	AC100-240V
DRIVE VOLTAGE	DC24V
OPENING SIGNAL INPUT	dry contact

- 1) SQUARE SWING GATE MOVEMENT, 40K 20W DC BRUSHLESS MOTOR; 1.2MM SUS304 NO. 400 WIRE DRAWING
- 2) PRECISION GRINDING AND WELDING BRIGHT EDGE PROCESS;
- 3) IT HAS AN AUTOMATIC RESET FUNCTION. AFTER A PEDESTRIAN READS A VALID CARD, IF HE FAILS TO PASS WITHIN THE TIME SPECIFIED BY THE SYSTEM, THE SYSTEM WILL AUTOMATICALLY CANCEL THE PEDESTRIAN'S PERMISSION TO PASS;
- 4) THE LED INDICATOR LIGHT PROMPTS THAT VALID CARDS APPEAR GREEN AND ILLEGAL CARDS APPEAR RED;
- 5) A UNIFIED STANDARD EXTERNAL ELECTRICAL INTERFACE CAN BE CONNECTED TO A VARIETY OF CARD READERS, AND REMOTE CONTROL AND MANAGEMENT CAN BE ACHIEVED THROUGH THE MANAGEMENT COMPUTER;
- 6) THE CHANNEL WILL AUTOMATICALLY OPEN NORMALLY AFTER A POWER OUTAGE (COMPLYING WITH FIRE PROTECTION REQUIREMENTS), AND WILL AUTOMATICALLY CLOSE WHEN POWER IS TURNED ON;

TECHNICAL PARAMETERS

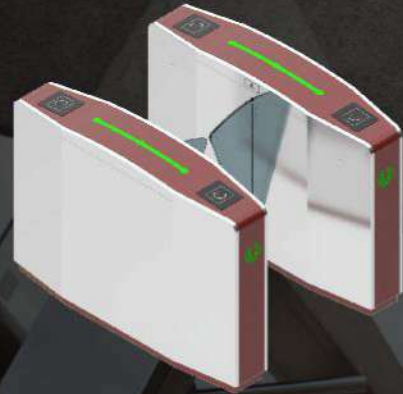
SIZE	200*200*1020
MATERIAL	thickness 1.2mm, 304 stainless steel
UNLOCK TIME	0.2s
PASSING SPEED	35p/m
CHANNEL WIDTH	600-1100mm
INPUT VOLTAGE	AC100-240V
DRIVE VOLTAGE	DC24V
OPENING SIGNAL INPUT	dry contact

FLAP TURNSTILE

- 1) SERVO MOTOR, 6 PAIRS OF INFRARED SENSORS;
- 2) THE GATE WOULD BE AUTOMATICALLY OPEN WHEN POWER OFF TO MEET THE NEEDS OF FIRE ESCAPES;
- 3) ANTI-TRAILING AND ANTI-PASSBACK CAPABILITIES;
- 4) WITH AUTOMATIC RESET AND INFRARED ANTI-PINCH FUNCTIONS;
- 5) MULTIPLE WORKING MODES ARE AVAILABLE;
- 6) SCOPE OF APPLICATION: CAMPUSES, COMMUNITIES, ETC., OFFICE BUILDINGS.
- 7) OPTIONAL THREE-COLOR LIGHTS/MARQUEE/BREATHING LIGHTS
- 8) VARIOUS COLORS CAN BE CUSTOMIZED BY IRON PLATE SPRAYING

TECHNICAL PARAMETERS

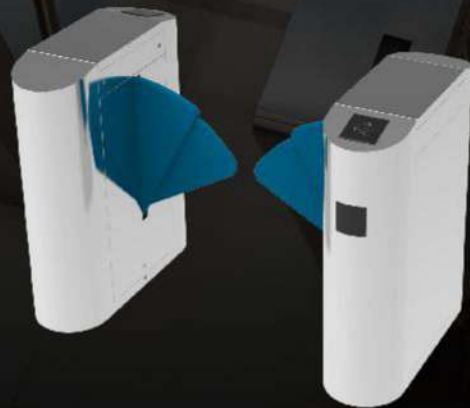
SIZE	1400*300*980mm
MATERIAL	thickness 1.2/1.5 mm, 304 stainless steel
UNLOCK TIME	0.2s
PASSING SPEED	35p/m
CHANNEL WIDTH	550mm/900mm
INPUT VOLTAGE	AC100-240V
DRIVE VOLTAGE	DC24V
OPENING SIGNAL INPUT	dry contact



- 1) BRUSH MOTOR, 3 PAIRS OF INFRARED SENSORS;
- 2) THE GATE WOULD BE AUTOMATICALLY OPEN WHEN POWER OFF TO MEET THE NEEDS OF FIRE ESCAPES;
- 3) WITH AUTOMATIC RESET AND INFRARED ANTI-PINCH FUNCTIONS;
- 4) MULTIPLE WORKING MODES AVAILABLE;
- 5) SCOPE OF APPLICATION: CAMPUS, COMMUNITY, ETC.

TECHNICAL PARAMETERS

SIZE	800*300*1000mm
MATERIAL	thickness 1.2/1.5 mm, 304 stainless steel
UNLOCK TIME	0.2s
PASSING SPEED	35p/m
CHANNEL WIDTH	900mm
INPUT VOLTAGE	AC100-240V
DRIVE VOLTAGE	DC24V
OPENING SIGNAL INPUT	dry contact



TRIPOD TURNSTILE

- 1) FULLY AUTOMATIC TRIPOD TURNSTILE MOVEMENT, STAINLESS STEEL TRIPOD ROD;
- 2) IT HAS THE FUNCTION OF DROPPING THE POLE WHEN POWER IS OFF, AND CAN ALSO ADD A REMOTE CONTROL TO CONTROL THE POLE DROPPING;
- 3) LED INDICATOR LIGHT PROMPTS, BLUE FOR STANDBY, GREEN FOR VALID CARDS, AND RED FOR ILLEGAL CARDS;
- 4) OPTIONAL THREE-COLOR LIGHT/MARQUEE/BREATHING LIGHT
- 5) WITH AUTOMATIC RESET FUNCTION;
- 6) IT HAS A UNIFIED AND STANDARD EXTERNAL ELECTRICAL INTERFACE TO FACILITATE SYSTEM INTEGRATION;
- 7) IT CAN BE CUSTOMIZED WITH IRON PLATE SPRAYING IN VARIOUS COLORS.
- 8) SCOPE OF APPLICATION: OFFICE BUILDINGS, HIGH-END RESIDENTIAL AREAS

TECHNICAL PARAMETERS

SIZE	1400*300*980mm
MATERIAL	thickness 1.2mm, 304 stainless steel
UNLOCK TIME	0.2s
PASSING SPEED	35p/m
CHANNEL WIDTH	550mm
INPUT VOLTAGE	AC100-240V
DRIVE VOLTAGE	DC24V
OPENING SIGNAL INPUT	dry contact



- 1) SEMI-AUTOMATIC TRIPOD TURNSTILE MOVEMENT, STAINLESS STEEL TRIPOD ROD;
- 2) IT HAS THE FUNCTION OF DROPPING THE POLE WHEN POWER IS OFF, AND CAN ALSO ADD A REMOTE CONTROL TO CONTROL THE POLE DROPPING;
- 3) THE LED INDICATOR LIGHT PROMPTS THAT THE ACTIVE CARD IS GREEN AND THE STANDBY CARD IS RED;
- 4) SCOPE OF APPLICATION: CAMPUS, COMMUNITY, ETC.

TECHNICAL PARAMETERS

SIZE	420*330*980mm
MATERIAL	thickness 1.2/1.5mm, 304 stainless steel
UNLOCK TIME	0.2s
PASSING SPEED	35p/m
CHANNEL WIDTH	550mm
INPUT VOLTAGE	AC100-240V
DRIVE VOLTAGE	DC24V
OPENING SIGNAL INPUT	dry contact

