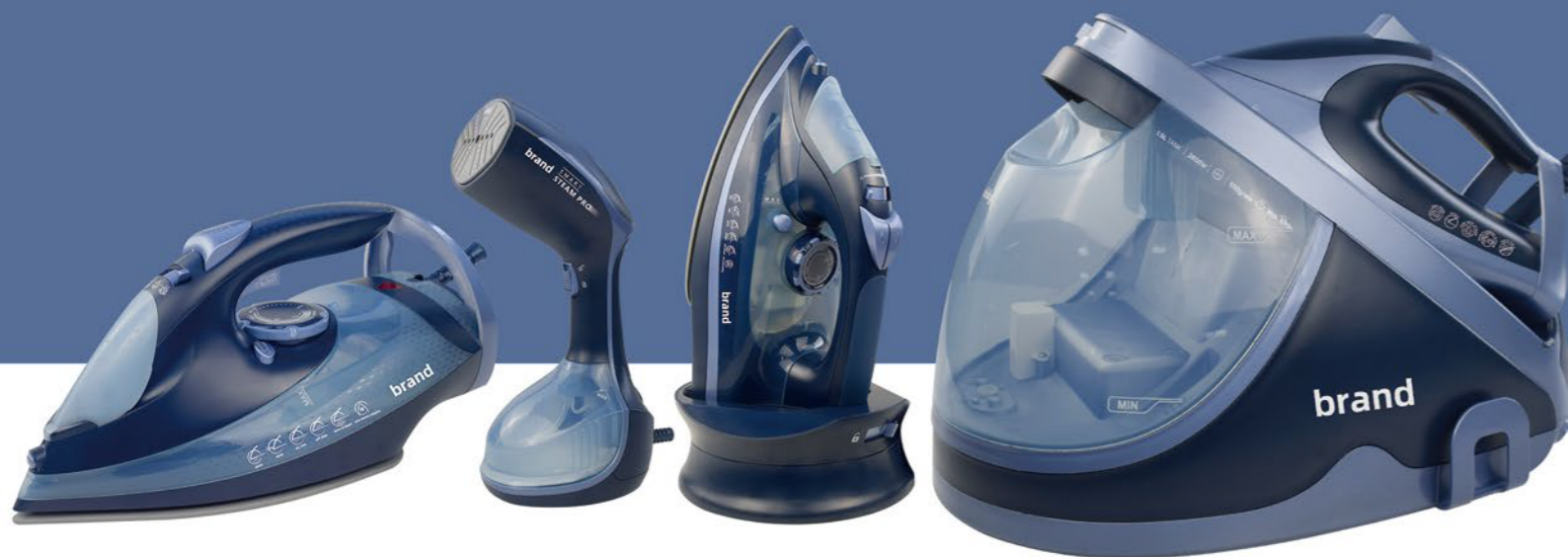


# Iron Catalog



# CONTENTS



We suggest same color combination series!!!

**06** | STEAM GENERATOR IRON

**08** | HIGH-END STEAM IRON

**19** | HANDHELD GARMENT STEAMER

**22** | PORTABLE STEAM CLEANER

**23** | CORDLESS & CORD RETRACTABLE IRON

**27** | STEAM IRON WITH PUMP SYSTEM

**28** | LED & LCD STEAM IRON

**31** | TRAVEL STEAM IRON

**32** | STEAM IRON IN MID-SIZE

**44** | OPP & ECONOMIC STEAM IRON

**53** | CORDLESS STEAM IRON

**58** | CORD RETRACTABLE STEAM IRON

**61** | DRY IRON

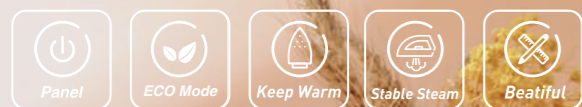
**63** | SOLEPLATES

**64** | KITCHEN APPLIANCES

**66** | PERSONAL CARE



# STEAM GENERATOR IRON



Soleplate	Composite ceramic coating soleplate	Non-stick/Ceramic coating/Nano ceramic coating/ Titanium coating	Non-stick/Ceramic coating/Nano ceramic coating/Titanium coating
Lock and carry features	✓	✓	✓
Power cord storage design	✓		
Detachable water tank	✓	✓	
With water empty alarm	With water empty alert and tone	With water empty alarm	Water shortage alert
Adjustable temperature	✓	✓	✓
PTC Control	✓	✓	
ECO design mode	✓	✓	✓
De-Calc alert design	✓	✓	Exchangeable anti-calc filter

## Steam Generator Iron



- Wattage: 2800W-3000W
- Voltage: 220-240V/100-127V
- Frequency: 50-60Hz
- Large Water tank capacity: 1900ml
- Soleplate size: 227x121mm
- Unit size: 430x245x280mm
- Unit weight: 4400g
- Two temperature level: MAX 170±15°C ; Lower Level: 120±15°C
- Burst of steam rate: 500±40g/min
- Continuous steam rate: 120g±15g/min
- Boiler pressure: 7±1.0 bar
- Steam Ready time: 3 minutes
- Power On tone
- Auto Shut-Off in 10 minutes when not used
- Packing details as follows  
1pc/ Carton  
Giftbox Size: 47.4x29.4x33.5cm  
Carton Meas.: 49.5x30.5x35.7cm  
20'=530pcs; 40'=1080pcs; 40'HQ=1210pcs
- CE/GS/CB/ROHS/REACH Approval

## Steam Generator Iron

- Power for steam iron: 830W/1030W
- Power for boiler: 1370W
- Voltage: 220-240V/100-127V
- Frequency: 50-60Hz
- Water tank capacity: 1700ml
- Soleplate size: 233x120mm
- Unit size: 430x256x280mm
- Continuous steam rate: 85±15g/min
- Burst of Steam: 300±40g/min
- Boiler pressure: 6.2±1.0 Bar
- Steam Ready time: 2-3 minutes
- Packing details as follows  
1pc/ Carton  
Giftbox Size: 47.4x29.4x32cm  
Carton Meas.: 50x30.5x34cm  
20'=540pcs; 40'=1085pcs; 40'HQ=1245pcs
- CE/GS/CB/ROHS/REACH Approval



## Steam Station Iron



- Power: 2200W-2400W
- Voltage: 220-240V/100-127V
- Frequency: 50-60Hz
- Continuous Steam Rate: 110±15g/min
- Burst of Steam Rate: 280±40g/min (Optional)
- Water tank capacity: 2000ml
- Soleplate size: 231x120mm
- Unit size: 370x196x250mm
- Steam ready time: 1 minute
- Packing details as follows  
1pc/ Carton  
Giftbox Size: 42.5x27.5x28cm  
Carton Meas.: 45x29x31cm  
20'=702pcs; 40'=1442pcs; 40'HQ=1636pcs;
- CE/GS/CB/ROHS/REACH Approval



# HIGH-END STEAM IRON



3000W



## High-End Steam Iron



- Dry/Spray/Steam/Burst of steam/Self-cleaning
- Soleplate: Non-Stick/Ceramic Coating/Nano Ceramic/Titanium Coating/Stainless Steel
- High accurate temperature control
- Optional features: anti-calc/anti-drip/auto shut-off
- Overheat safety protection circuit
- Power: 1200W-3000W
- Voltage:220-240V/100-127V
- Frequency: 50-60Hz
- Water tank capacity: 320ml
- Soleplate size: 237x129mm
- Unit size: 310x128x150mm
- Burst of steam rate: 0.6-0.8g/time
- Continuous steam rate: 20-30g/min
- Packing details as follows
- 6pcs/Carton
- Giftbox Size: 32.5x15x16.9cm
- Carton Meas.: 46.9x33.5x35.9cm
- G.W./N.W.: 10.5/9.85Kgs.
- 20'=2988pcs; 40'=6138pcs; 40'HQ=7224pcs
- CE/GS/CB/EMC/LVD/ROHS/REACH approval

## High-End Steam Iron



- Dry/Spray/Steam/Burst of steam/Self-cleaning
- Soleplate: Non-Stick/Ceramic Coating/Nano Ceramic/Titanium Coating/Stainless Steel
- High accurate temperature control
- Optional features: anti-calc/anti-drip/Sensor(Auto Shut off, Auto Turn on)
- Overheat safety protection circuit
- Power: 1200W-3000W
- Voltage:220-240V/100-127V
- Frequency: 50-60Hz
- Water tank capacity: 300ml
- Open Handle Design
- Soleplate size: 237x129mm
- Unit size: 310x135x148mm
- Burst of steam rate: 0.5-0.8g/time
- Continuous steam rate: 20-30g/min
- Packing details as follows
- 6pcs/Carton
- Giftbox Size: 32.5x15x15.9 cm
- Carton Meas.: 46.9x33.5x.34cm
- G.W./N.W.: 10.5/9.85Kgs.
- 20'=3168pcs; 40'=6420pcs; 40'HQ=7440pcs
- CE/GS/CB/EMC/LVD/ROHS/REACH approval





### High-End Steam Iron

- Dry/Spray/Steam/Burst of seam/Self-cleaning
- Optional features: Anti-calc/Anti-Drip/Auto Shut-Off
- Two-color lights remind temperature change of soleplate
- Power: 1200W-3000W
- Voltage: AC220-240V/ 100-127V
- Frequency: 50-60Hz
- Soleplate: Non-Stick/Ceramic coating/Nano Ceramic/Titanium Coating/Stainless Steel
- Water Tank capacity: 320±10ml
- High accurate temperature
- Unit size: 310x146x152mm
- Soleplate Size: 237x129mm
- Overheat safety protection circuit
- Continuous Steam Rate: 20-30g/min.
- Burst of Steam Rate: 0.6-0.8g/time
- Packing details as follows:  
6pcs per carton  
Giftbox size: 32.5x15x15.9cm  
Carton Size: 46.9x33.5x34cm  
20'=3168pcs; 40'=6420pcs; 40'HQ=7440pcs
- CE/GS/CB/ROHS approval



### High-End Steam Iron

- Dry/Spray/Steam/ Burst of steam/Self-cleaning
- Soleplate: Non-Stick/Stainless Steel/Ceramic Coating/Nano Ceramic/Titanium Coating
- High accurate temperature control
- Optional features: anti-calc/anti-drip/auto shut-off
- Overheat safety protection circuit
- Power: 1200W-3000W
- Voltage: 220-240V/100-127V
- Frequency: 50-60Hz
- Water tank capacity: 300ml
- Soleplate size: 237x129mm
- Unit size: 310x132x151mm
- Burst of steam rate: 0.6-0.8g/time
- Continuous steam rate: 20-30g/min
- Packing details as follows  
6pcs/Carton  
Giftbox Size: 32.2x15x16.9cm  
Carton Meas.: 46.9x33.3x35.9cm  
G.W./N.W.: 11.4/10.14Kgs.  
20'=2988pcs; 40'=6138pcs; 40'HQ=7224pcs
- CE/GS/CB/EMC/LVD/ROHS/REACH approval



Composite ceramic soleplate

### High-End Steam Iron

- Dry/Spray/Steam/ Burst of steam/Self-cleaning
- Soleplate: Composite ceramic coating soleplate
- High accurate temperature control
- 53 steam holes
- Optional features: anti-calc/anti-drip/auto shut-off
- Overheat safety protection circuit
- Power: 2800W-3000W
- Voltage: 220-240V/100-127V
- Frequency: 50-60Hz
- Water tank capacity: 460ml
- Soleplate size: 251x131mm
- Unit size: 317\*150\*160mm
- Burst of steam rate: 1-1.2g/time
- Continuous steam rate: 50±8g/min
- High-Level Aluminum Soleplate with Ceramic Coating
- Aluminum soleplate weight: 510g
- The total weight of Aluminum soleplate with steam chamber+heating element+ wrapped cover: 720g
- Exchangeable anti-calc filter
- Packing details as follows  
6pcs/Carton  
Giftbox Size: 32.5x16x17cm  
Carton Meas.: 50x34x36cm  
G.W./N.W.: 11.4/10.14Kgs.  
20'=2688pcs; 40'=5352pcs; 40'HQ=6252pcs
- CE/GS/CB/ROHS approval





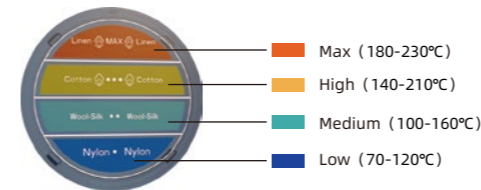
### High-End Steam Iron

- Dry/Spray/Steam/Burst of steam/Self-cleaning .
- Soleplate: Non-Stick/Ceramic Coating/Nano Ceramic/ Titanium Coating/Stainless Steel/Double Layer Anodized Soleplate.
- High accurate temperature control.
- Optional features: anti-calc/anti-drip/auto shut-off.
- Overheat safety protection circuit.
- Power: 2300W-3000W
- Voltage:220-240V/100-127V
- Frequency: 50-60Hz
- Water tank capacity: 350ml
- Soleplate size: 240x125mm
- Unit size: 319.5x130x156.2mm
- Burst of steam rate: 0.8-1.2g/time
- Continuous steam rate: 25±5g/min , 45±5g/min
- Packing details as follows
- 6pcs/Carton
- Giftbox Size: 33.7x13.4x16.2cm
- Carton Meas.: 42.4x34.4x35.8cm
- 20'=TBA; 40'=TBA; 40'HQ=TBA
- GS/CE/CB/EMC/ROHS/PAHS approval



### High-End Steam Iron

- Dry/Spray/Steam/Burst of steam/Self-cleaning .
- Soleplate: Non-Stick/Ceramic Coating/Nano Ceramic/ Titanium Coating/Stainless Steel/Double Layer Anodized Soleplate.
- With constant temperature control instead of thermostat knob control.
- Soleplate temperature: 145±5°C
- Optional features: anti-calc/anti-drip/auto shut-off
- Overheat safety protection circuit.
- Power: 2300W-3000W
- Voltage:220-240V/100-127V
- Frequency: 50-60Hz
- Water tank capacity: 300ml
- Soleplate size: 240x125mm
- Unit size: 320x130x155mm
- Burst of steam rate: 0.8-1.2g/time
- Continuous steam rate: 25±5g/min , 45±5g/min
- Packing details as follows
- 6pcs/Carton
- Giftbox Size: 33.7x13.4x16.2cm
- Carton Meas.: 42.4x34.4x35.8cm
- 20'=TBA; 40'=TBA; 40'HQ=TBA
- GS/CE/CB/EMC/ROHS/PAHS approval



### High-End Steam Iron

- Dry/Spray/Steam/Burst of steam/Self-cleaning/LED.
- Soleplate: Non-Stick/Ceramic Coating/Nano Ceramic/ Titanium Coating/Stainless Steel/Double Layer Anodized Soleplate.
- Colorful LED display panel, electronic accurate temperature control, touch control mode.
- High accurate temperature control.
- Optional features: anti-calc/anti-drip/auto shut-off
- Overheat safety protection circuit.
- Power: 2300W-3000W
- Voltage:220-240V/100-127V
- Frequency: 50-60Hz
- Water tank capacity: 300ml
- Soleplate size: 240x125mm
- Unit size: 320x130x155mm
- Burst of steam rate: 0.8-1.2g/time
- Continuous steam rate: 25±5g/min , 45±5g/min
- Packing details as follows
- 6pcs/Carton
- Giftbox Size: 33.7x13.4x16.2cm
- Carton Meas.: 42.4x34.4x35.8cm
- 20'=TBA; 40'=TBA; 40'HQ=TBA
- GS/CE/CB/EMC/ROHS/PAHS approval



## High-End Steam Iron



- Dry/Spray/Steam/Burst of steam/Self-cleaning/
- Soleplate: Non-Stick/Ceramic Coating/Nano Ceramic/Titanium Coating/Stainless Steel
- High accurate temperature control
- Optional features: anti-calc/anti-drip/auto shut-off
- Overheat safety protection circuit
- Power: 1200W-3000W
- Voltage:220-240V/100-127V
- Frequency: 50-60Hz
- Water tank capacity: 320ml
- Soleplate size:237x129mm
- Unit size: 304x137x154mm
- Burst of steam rate: 0.6-1.0g/time
- Continuous steam rate: 25-35g/min
- Packing details as follows
- 6pcs/Carton
- Giftbox Size: 32.2x15x16.9cm
- Carton Meas.: 46.9x33.3x35.9cm
- G.W./N.W.: 11.4/10.14Kgs.
- 20=2988pcs; 40'=6138pcs;40'HQ=7224pcs
- 10pcs/Carton
- Giftbox Size: 32.2x15x16.9cm
- Carton Meas.: 77.5x33.3x35.9cm
- G.W./N.W.: 16/15Kgs.
- 20=3050pcs; 40=6230pcs;40'HQ=7130pcs
- CE/GS/CB/EMC/LVD/ROHS/REACH approval

## High-End Steam Iron



- Dry/Spray/Steam/Burst of steam/Self-cleaning
- Soleplate: Non-Stick/Ceramic Coating/Nano Ceramic/Titanium Coating/Stainless Steel
- High accurate temperature control
- Optional features: anti-calc/anti-drip/Sensor(Auto Shut off, Auto Turn on)
- Overheat safety protection circuit
- Power: 1200W-3000W
- Voltage:220-240V/100-127V
- Frequency: 50-60Hz
- Water tank capacity: 430ml
- Soleplate size: 237x129mm
- Unit size: 305x136x157mm
- Burst of steam rate: 1.0-1.2g/time
- Continuous steam rate: 20-30g/min
- Packing details as follows
- 10pcs/Carton
- Giftbox Size: 32.2x15x16.9cm
- Carton Meas.: 77.5x33.3x35.9cm
- G.W./N.W.: 10.4/9.6Kgs
- 20'=3050pcs; 40'=6230pcs; 40'HQ=7130pcs
- CE/GS/CB/EMC/LVD/ROHS/REACH approval

## High-End Steam Iron

- Dry/Spray/Steam/Burst of steam/Self-cleaning
- Soleplate: Non-Stick/Ceramic Coating/Nano Ceramic/Titanium Coating/Stainless Steel
- High accurate temperature control
- Optional features: anti-calc/anti-drip/Sensor(Auto Shut off, Auto Turn on)
- Overheat safety protection circuit
- Power: 1200W-3000W
- Voltage:220-240V/100-127V
- Frequency: 50-60Hz
- Water tank capacity: 390ml
- Soleplate size:237x129mm
- Unit size: 310x128x150mm
- Burst of steam rate: 0.6-1.0g/time
- Continuous steam rate: 25-35g/min
- Packing details as follows
- 6pcs/Carton
- Giftbox Size: 32.2x15x16.9cm
- Carton Meas.: 46.9x33.3x35.9cm
- G.W./N.W.: 11.4/10.14Kgs.
- 20=2988pcs; 40'=6138pcs;40'HQ=7224pcs
- CE/GS/CB/EMC/LVD/ROHS/REACH/ETL/CETL approval



## High-End Steam Iron

- Dry/Spray/Steam/Burst of steam/Self-cleaning
- Soleplate: Non-Stick/Ceramic Coating/Nano Ceramic/Titanium Coating/Stainless Steel
- High accurate temperature control
- Optional features: anti-calc/anti-drip/Sensor(Auto Shut off, Auto Turn on)
- Overheat safety protection circuit
- Power: 1200W-3000W
- Voltage:220-240V/100-127V
- Frequency: 50-60Hz
- Water tank capacity: 400ml
- Soleplate size: 237x129mm
- Unit size: 311x136x154mm
- Burst of steam rate: 1.0-1.5g/time
- Continuous steam rate: 20-30g/min
- Packing details as follows
- 10pcs/Carton
- Giftbox Size: 32.2x15x16.9cm
- Carton Meas.: 77.5x33.3x35.9cm
- G.W./N.W.: 10.4/9.6Kgs
- 20'=3050pcs; 40'=6230pcs; 40'HQ=7130pcs
- CE/GS/CB/EMC/LVD/ROHS/REACH approval







### High-End Steam Iron

- Dry/Spray/Steam/Burst of steam/Self-cleaning
- Soleplate: Non-Stick/Ceramic Coating/Nano Ceramic/Titanium Coating/Stainless Steel
- High accurate temperature control
- Optional features: anti-calc/anti-drip/auto shut-off
- Overheat safety protection circuit
- Power: 1200W-3000W
- Voltage:220-240V/100-127V
- Frequency: 50-60Hz
- Water tank capacity: 470ml
- Soleplate size: 248x125mm
- Unit size: 303x165x123mm
- Burst of steam rate: 0.6-1.0g/time
- Continuous steam rate: 25-35g/min
- Packing details as follows
- 6pcs/Carton
- Giftbox Size: 33x13x18.5cm
- Carton Meas.: 41x34x39cm
- G.W./N.W.: 10.4/9.6Kgs.
- 20'=3000pcs; 40'=6000pcs; 40'HQ=7140pcs
- CE/GS/CB/EMC/LVD/ROHS/REACH/ETL/CETL approval



### High-End Steam Iron

- Dry/Spray/Steam/Burst of steam/Self-cleaning
- Soleplate: Non-Stick/Ceramic Coating/Nano Ceramic/Titanium Coating/Stainless Steel
- High accurate temperature control
- Optional features: anti-calc/anti-drip/auto shut-off
- Overheat safety protection circuit
- Power: 1200W-3000W
- Voltage:220-240V/100-127V
- Frequency: 50-60Hz
- Water tank capacity: 380ml
- Soleplate size: 237x129mm
- Unit size: 310x128x150mm
- Burst of steam rate: 0.6-1.0g/time
- Continuous steam rate: 20-30g/min
- Packing details as follows
- 6pcs/Carton
- Giftbox Size: 32.2x15x16.9cm
- Carton Meas.: 46.9x33.3x35.9cm
- G.W./N.W.: 11.4/10.14Kgs.
- 20'=2988pcs; 40'=6138pcs; 40'HQ=7224pcs
- CE/GS/CB/EMC/LVD/ROHS/REACH approval

### High-End Steam Iron

- Dry/Spray/Steam/Burst of steam/Self-cleaning
- Soleplate: Non-Stick/Ceramic Coating/Nano Ceramic/Titanium Coating/Stainless Steel
- High accurate temperature control
- Optional features: anti-calc/anti-drip/auto shut-off
- Overheat safety protection circuit
- Power: 1200W-3000W
- Voltage:220-240V/100-127V
- Frequency: 50-60Hz
- Water tank capacity: 400ml
- Soleplate size: 248x125mm
- Unit size: 302x160x123mm
- Burst of steam rate: 0.6-1.0g/time
- Continuous steam rate: 20-30g/min
- Packing details as follows
- 6pcs/Carton
- Giftbox Size: 33x13x18.5cm
- Carton Meas.: 41x34x39cm
- G.W./N.W.: 10.4/9.6Kgs
- 20'=3000pcs; 40'=6000pcs; 40'HQ=7140pcs
- CE/GS/CB/EMC/LVD/ROHS/REACH approval



### High-End Steam Iron

- Dry/Spray/Steam/Burst of steam/Self-cleaning
- Soleplate: Non-Stick/Ceramic Coating/Nano Ceramic/Titanium Coating/Stainless Steel
- High accurate temperature control
- Optional features: anti-calc/anti-drip/Sensor(Auto Shut off, Auto Turn on)
- Overheat safety protection circuit
- Power: 1200W-3000W
- Voltage:220-240V/100-127V
- Frequency: 50-60Hz
- Water tank capacity: 320ml
- Soleplate size: 237x129mm
- Unit size: 307x130x150mm
- Burst of steam rate: 0.6-0.8g/time
- Continuous steam rate: 20-30g/min
- Packing details as follows
- 6pcs/Carton
- Giftbox Size: 32.2x15x16.9cm
- Carton Meas.: 46.9x33.3x35.9cm
- G.W./N.W.: 11.4/10.14Kgs.
- 20'=2988pcs; 40'=6138pcs;40'HQ=7224pcs
- 10pcs/Carton
- Giftbox Size: 32.2x15x16.9cm
- Carton Meas.: 77.5x33.3x35.9cm
- G.W./N.W.: 16/15Kgs.
- 20'=3050pcs; 40'=6230pcs;40'HQ=7130pcs
- CE/GS/CB/EMC/LVD/ROHS/REACH/ETL/CETL approval







### High-End Steam Iron

- Dry/Spray/Steam/Burst of steam/Self-cleaning
- Soleplate: Non-Stick/Ceramic Coating/Nano Ceramic/Titanium Coating/Stainless Steel
- High accurate temperature control
- Optional features: anti-calc/anti-drip/auto shut-off
- Overheat safety protection circuit
- Power: 1200W-3000W
- Voltage:220-240V/100-127V
- Frequency: 50-60Hz
- Water tank capacity: 420ml
- Soleplate size: 237x129mm
- Unit size: 310x128x150mm
- Burst of steam rate: 0.6-0.8g/time
- Continuous steam rate: 20-30g/min
- Packing details as follows  
6pcs/Carton  
Giftbox Size: 32.2x15x16.9cm  
Carton Meas.: 46.9x33.3x35.9cm  
G.W./N.W.: 11.4/10.14Kgs.  
20'=2988pcs; 40'=6138pcs; 40'HQ=7224pcs
- CE/GS/CB/EMC/LVD/ROHS/REACH approval

### High-End Steam Iron

- Dry/Spray/Steam/Burst of steam/Self-cleaning
- Soleplate: Non-Stick/Ceramic Coating/Nano Ceramic/Titanium Coating/Stainless Steel
- High accurate temperature control
- Optional features: anti-calc/anti-drip/auto shut-off
- Overheat safety protection circuit
- Power: 1200W-3000W
- Voltage:220-240V/100-127V
- Frequency: 50-60Hz
- Water tank capacity: 380ml
- Soleplate size: 237x129mm
- Unit size: 310x138x150mm
- Burst of steam rate: 0.8-1.2g/time
- Continuous steam rate: 20-30g/min
- Packing details as follows  
6pcs/Carton  
Giftbox Size: 32.7x16.2x16.5cm  
Carton Meas.: 46.9x33.3x35.9cm  
G.W./N.W.: 11.4/10.14Kgs.  
20=2988pcs; 40'=6138pcs;40'HQ=7224pcs  
10pcs/Carton  
Giftbox Size: 32.2x15x16.9cm  
Carton Meas.: 77.5x33.3x35.9cm  
G.W./N.W.: 16/15Kgs.  
20'=3050pcs; 40'=6230pcs; 40'HQ=7130pcs
- CE/GS/CB/EMC/LVD/ROHS/REACH approval



• HANDHELD GARMENT STEAMER

HANDHELD GARMENT STEAMER



## Handheld Garment Steamer 1



## Handheld Garment Steamer 2



Model	1	2
Features	Instantly refresh your clothes, remove wrinkles, clean and sterilize clothes in no time	
	Versatile- suitable for a variety of fabrics including cotton, wool, polyester, plush, silk, fiber, nylon	
	Useful accessories Fabric brush to brush away wrinkles, steam bonnet to prevent any type of dripping water from staining your garments	
	Fabric Brush, Hair Brush	2 in 1 Fabric Brush
	Removable water tank is easy to clean and refill, compact design for travel or business trip	
Voltage/Power	110-127V/1200W-1600W 220-240V/1200W-1500W	
Frequency	50-60Hz	
Water Tank Capacity	250ml	160ml
Unit Size	135x124x292mm	115x148x303mm
Soleplate Size	115x65mm	105x57mm
Continuous Steam Rate	24±4g/min	22±5g/min
Steam Ready Time	30s	
Pump System	With pump	
Anti-calc	Exchangeable anti-calc filter	
Steam Lock Switch	With steam lock switch	
Auto Shut-off	5 minutes when not used	
Continuous Steam Time	Water tank lasts for up to about 10 minutes of continuous steam	
Packing Details As Follows	6pcs per carton Giftbox size: 19.3x14.8x32.1cm Carton Size: 46.5x40.2x34.2cm 2580pcs/20'FCL; 5340pcs/40'FCL; 6270pcs/40'HQ	
Certification	CE/GS/CB/EMC/LVD/ROHS/REACH/ETL/CETL	



# PORTABLE STEAM CLEANER



## Portable Steam Cleaner

- Continuous Steam
- Heating Time: 12s
- Water Tank Capacity: 250ml
- Power: 1500W
- Voltage: AC120V/AC220-240V
- Steam Pressure: 3.5 Bar
- Working Time: 15 min
- Unit Net Weight: 1.4 Kgs.
- Lightweight and portable
- Accessories: For multi-surface cleaning like Glass brush, elbow nozzle, big pick head, small round brush, small round nozzle, extension fitting sleeve pipe.
- Steam temperature: 100°C
- Steam temperature 91 degrees away from nozzle 5mm.
- Steam Rate: 15-20g/min.
- Multiple connections and scenarios
- Multiple security production
- Longer hose for more flexibility
- Long steam injection distance of 0.8 m
- Unit Size: 317X108X234mm
- Packing Details to be fixed
- CE/GS/CB/ROHS/REACH approval

# CORDLESS & CORD RETRACTABLE IRON





## Cordless & Cord Retractable Iron



## Cordless & Cord Retractable Iron



- The indicator light changes orange when the iron is heated.
- When the iron is working, the light turns green.
- The indicator light turns red when the temperature is too low.



- 8 foot retractable cord retracts conveniently into base for neat, easy storage.

### Functions:

- Cordless/Cord retractable /Dry/Spray/Steam/Burst of steam /Self-cleaning
- Soleplate: Non-Stick/Ceramic Coating/Nano Ceramic/ Titanium Coating/Stainless Steel
- Innovative cord retractable designs, never worry about the cord hitting your hand
- Optional features: anti-calc/anti-drip/auto shut-off
- Optional smart heating alert technology
- Overheat safety protection circuit
- Room space-saving design
- Ionic nano ceramic coating optional

- Power: 1200W-2600W
- Voltage: 220-240V/100-127V
- Frequency: 50-60Hz
- Water tank capacity: 280ml
- Soleplate size: 229x121mm
- Unit size: 178x178x337mm
- Burst of steam rate: 0.4-0.6g/time
- Continuous steam rate: 20-30g/min
- Packing details as follows: 10 minutes of continuous steam
- Packing details as follows: 6pcs/Carton  
Giftbox Size: 19.5x19.5x35.2cm  
Carton Meas.: 60.5x40.5x37.5cm  
20'=1704pcs; 40'=3540pcs; 40'HQ=3966pcs
- Model No.: UHC-3001RW only for American market with ETL/CETL approval
- Model No.: HC-3001RW for all the other countries except USA with CE/GS/CB/EMC/LVD/RoHS approval

### Functions:

- Cordless/Cord retractable/Dry/Spray/Steam/Burst of steam/Self-cleaning
- Soleplate: Non-Stick/Ceramic Coating/Nano Ceramic/Titanium Coating/Stainless Steel
- Innovative cord retractable designs, never worry about the cord hitting your hand
- Optional features: anti-calc/anti-drip/auto shut-off
- Optional smart heating alert technology
- Overheat safety protection circuit
- Room space-saving design
- Ionic nano ceramic coating optional

- Power: 1200W-2600W
- Voltage: 220-240V/100-127V
- Frequency: 50-60Hz
- Water tank capacity: 250ml
- Soleplate size: 229x121mm
- Unit size: 178x178x339mm
- Burst of steam rate: 0.3-0.5g/time
- Continuous steam rate: 15-25g/min
- Packing details as follows: 6pcs/Carton  
Giftbox Size: 19.5x19.5x35.2cm  
Carton Meas.: 60.5x40.5x37.5cm  
20'=1704pcs; 40'=3540pcs; 40'HQ=3966pcs
- Model No.: UHC-3002RW only for American market with ETL/CETL approval
- Model No.: HC-3002RW for all the other countries except USA with CE/GS/CB/EMC/LVD/ROHS approval



## Cordless & Cord Retractable Iron



- Cord retracable/Cordless/Dry/Spray/Steam/Burst of steam
- Soleplate: Non-Stick/Ceramic coating/Nano Ceramic/Titanium Coating/Stainless Steel
- Innovative cord retractable designs, never worry about the cord hitting your hand
- Optional features: anti-calc/auto shut-off
- Optional smart heating alert technology
- Room space-saving design
- Power: 1200W-1800W
- Voltage: 220-240V/100-127V
- Frequency: 50-60Hz
- Water tank capacity: 180ml
- Soleplate size: 198x105mm
- Unit size: 188x178x324mm
- Burst of steam rate: 0.3-0.5g/time
- Continuous steam rate: 10-20g/min
- Packing details as follows  
6pcs/Carton  
Giftbox Size: 19.5x19.5x33.3cm  
Carton Meas.: 60.5x40.5x35.5cm  
20'=1830pcs; 40'=3660pcs;  
40'HQ=4320pcs
- CE/GS/CB/EMC/LVD/ROHS approval



## Cordless & Corded Steam Iron



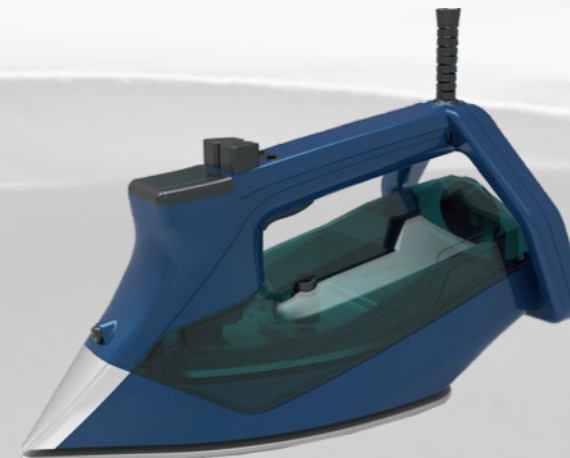
- Cord & Cordless/Dry/Spray/Steam/Burst of steam/Self-cleaning
- Soleplate: Non-Stick/Ceramic Coating/Nano Ceramic/Titanium Coating/Stainless Steel
- High accurate temperature
- Optional features: anti-calc/anti-drip/auto shut-off
- Overheat safety protection
- Power: 1200W-2600W
- Voltage:220-240V/100-127V
- Frequency: 50-60Hz
- Water tank capacity: 270ml
- Soleplate size: 231x120mm
- Unit size: 320x133x145mm
- Burst of steam rate: 0.5-0.8g/time
- Continuous steam rate: 15-25g/min
- Packing details as follows  
10pcs/Carton  
Giftbox Size: 32x13.1x16.6cm  
Carton Meas.: 46x35.7x35cm  
G.W./N.W.: 13/12Kgs.  
20'=2934pcs; 40'=5928pcs;40'HQ=6840pcs
- CE/GS/CB/EMC/LVD/ROHS/REACH/ETL/CETL approval

## Steam Iron With Pump System



- Dry/Spray/Steam/Burst of steam/Self-cleaning/Pump system
- Soleplate: Non-Stick/Ceramic Coating/Nano Ceramic/Titanium Coating/Stainless Steel
- Optional features: anti-calc/anti-drip/auto shut-off/sensor
- Overheat safety protection circuit
- Power: 1200W-2600W
- Voltage:220-240V/100-127V
- Frequency: 50-60Hz
- Water tank capacity:320ml
- Soleplate size:230x120mm
- Unit size: 313x125x165mm
- Burst of steam rate: 0.4-0.6g/time
- Continuous steam rate: 20-30g/min
- Packing details as follows  
8pcs/Carton  
Giftbox Size: 32x13.3x16.6cm  
Carton Meas.: 54.5x33x35.2cm  
20'=3560pcs; 40'=7360pcs; 40'HQ=8080pcs
- CE/GS/CB/ROHS/REACH approval

## Steam Iron With Pump System



- Dry/Spray/Steam/Burst of steam/Self-cleaning/LCD/Auto Shut-Off/Pump system
- Soleplate: Non-Stick/Ceramic Coating/Nano Ceramic/Titanium Coating/Stainless Steel
- High accurate electronic temperature control
- Continuous steam ironing/continuous vertical steam ironing
- Electronic programmable steam
- Optional features:anti-calc/auto shut-off
- Overheat safety protection circuit
- Power:1200-3250W
- Voltage:220-240V/100-127V
- Frequency: 50-60Hz
- Water tank capacity:470ml
- Soleplate size:237x129mm
- Unit size:310x158x155mm
- Burst of steam rate: 0.6-1.0g/time
- Continuous steam rate: 25-35g/min
- Packing details as follows:  
6pcs/Carton  
Giftbox Size:33.4x15x17cm  
Carton Meas.:54.5x34.4x36cm  
20'=2298pcs; 40'=4746pcs; 40'HQ=5538pcs
- CE/GS/CB/RoHS/ETL/CETL approval



# LED & LCD STEAM IRON



## LED Steam Iron

- Dry/Spray/Steam/Burst of steam/Self-cleaning/LED/Auto Shut-off
- Soleplate: Non-Stick/Ceramic Coating/Nano Ceramic/Titanium Coating/Stainless Steel
- High accurate temperature control
- Optional features: anti-calc/anti-drip
- Overheat safety protection circuit
- Power: 1200W-3000W
- Voltage:220V-240V/100-127V
- Frequency: 50-60Hz
- Water tank capacity: 390ml
- Soleplate size: 239x130mm
- Unit size: 310x128x150mm
- Burst of steam rate: 0.6-1.0g/time
- Continuous steam rate: 25-35g/min
- Packing details as follows  
10pcs/Carton  
Giftbox Size: 32.2x14.7x16.7cm  
Carton Meas.: 77.5x33.3x.35cm  
20'=3050pcs; 40'=6230pcs; 40'HQ=7130pcs
- CE/GS/CB/EMC/LVD/ROHS/REACH/ETL/CETL approval

## LED Steam Iron



- Dry/Spray/Steam/Burst of steam/Self-cleaning/LED.
- Soleplate: Non-Stick/Ceramic Coating/Nano Ceramic/Titanium Coating/Stainless Steel.
- Colorful LED display panel, electronic accurate temperature control, touch control mode, auto shut-off built-in to effectively protect the safety of use.
- Timely and intuitively reflects the status of the product when the temperature changes.
- It is more convenient to use and will not burn the clothes by mistake.
- High accurate temperature control
- Optional features: anti-calc/anti-drip/auto shut-off
- Overheat safety protection circuit
- Power: 1200-2600W
- Voltage:220-240V/100-127V
- Frequency: 50-60Hz
- Water tank capacity: 300ml
- Soleplate size: 231x120mm
- Unit size: 293x133x145mm
- Burst of steam rate: 0.4-0.6g/time
- Continuous steam rate: 15-25g/min
- Packing details as follows  
10pcs/Carton  
Giftbox Size: 31.3x12.5x16.5cm  
Carton Meas.: 65x32.5x35cm  
G.W./N.W.: 14/13Kgs.  
20'=3950pcs; 40'=8100pcs;40'HQ=9200pcs
- CE/GS/CB/EMC/LVD/ROHS/REACH approval



Press switch button once to display the first default temperature setting.

Press the power switch to display various temperature settings

## LED Steam Iron



- Dry/Spray/Steam/Burst of steam/Self-cleaning/LED/Auto Shut-off
- Soleplate: Non-Stick/Ceramic Coating/Nano Ceramic/Titanium Coating/Stainless Steel
- High accurate temperature control
- Optional features: anti-calc/anti-drip
- Overheat safety protection circuit
- Power:1200W-2400W Max:2200-2600W
- Voltage:220-240V/100-127V
- Frequency: 50-60Hz
- Water tank capacity: 280ml
- Soleplate size: 229x121mm
- Unit size: 295x120x150mm
- Burst of steam rate: 0.6-1.0g/time
- Continuous steam rate: 15-25g/min
- Packing details as follows  
10pcs/Carton  
Giftbox Size: 30.5x12.4x15.7cm  
Carton Meas.: 65x31.5x33.5cm  
20'=4150pcs; 40'=8310pcs;40'HQ=9520pcs
- CE/GS/CB/ROHS/REACH approval





### LCD Steam Iron

- Dry/Spray/Steam/Burst of steam/Self-cleaning/LCD
- Soleplate: Non-Stick/Ceramic Coating/Nano Ceramic/Titanium Coating/Stainless Steel
- Optional features: anti-calc/anti-drip/auto shut-off/sensor
- Overheat safety protection circuit
- Power: 1200W-2600W
- Voltage:220-240V/100-127V
- Frequency: 50-60Hz
- Water tank capacity: 280ml
- Soleplate size:229x121mm
- Unit size: 295x120x150mm
- Burst of steam rate: 0.6-1.0g/time
- Continuous steam rate: 15-25g/min
- Packing details as follows  
10pcs/Carton  
Giftbox Size: 30.5x12.4x15.7cm  
Carton Meas.: 65x31.5x33.5cm  
20'=4150pcs; 40'=8310pcs; 40'HQ=9520pcs
- CE/GS/CB/ROHS/REACH approval

### LCD Steam Iron

- Dry/Spray/Steam/Burst of steam/Self-cleaning/LCD/Auto Shut-Off
- Soleplate: Non-Stick/Ceramic Coating/Nano Ceramic/Titanium Coating/Stainless Steel
- High accurate temperature control
- Optional features: anti-calc/anti-drip
- Overheat safety protection circuit
- Power: 1200W-2200W
- Voltage:220-240V/100-127V
- Frequency: 50/60Hz
- Water tank capacity: 300ml
- Soleplate size: 229x121mm
- Unit size: 305x121x150mm
- Burst of steam rate: 0.4-0.6g/time
- Continuous steam rate: 15-25g/min
- Packing details as follows  
10pcs/Carton  
Giftbox Size: 32.8x13.3x16.2cm  
Carton Meas.: 69x33.9x34.4cm  
20'=2880pcs; 40'=6100pcs; 40'HQ=7130pcs
- CE/GS/CB/ROHS/REACH approval



# TRAVEL STEAM IRON



- Dry ironing without wet clothes.
- Small size with light weight, easy to carry for business or personal travel .
- Easy daily work accompanying.
- Exquisite and elegant.
- Small and lightweight ,precise quick ironing, your good travel partner.

### Travel Steam Iron

- Dry/Steam
- Voltage:220-240V/100-127V
- Frequency: 50-60Hz
- Power: 1000W
- Water tank capacity: 90ml
- Soleplate Size: 160x75mm
- Unit size:174x92x154mm
- Unit weight:0.738 kgs
- Continuous steam rate: 5-16g/min
- Steam level 1: 7g/min.; suitable for cotton, silk fabrics
- Steam level 2: 14g/min, suitable for woolen or plush fabrics
- Base can be locked and connected with iron
- Packing details as follows  
6pcs/Carton  
Giftbox Size: 22x9.5x17.5cm  
Carton Meas.: 31x23.5x37cm  
20'=6036pcs; 40'=12078pcs;40'HQ=13536pcs
- CE/GS/CB/ROHS/REACH approval





# STEAM IRON IN MID-SIZE



## Steam Iron In Mid-size



- Dry/Spray/Steam/Burst of steam/Self-cleaning
- Soleplate: Non-Stick/Ceramic Coating/Nano Ceramic/Titanium Coating/Stainless Steel
- High accurate temperature control
- Optional features: anti-calc/anti-drip/auto shut-off
- Overheat safety protection circuit
- Power: 1200W-2400W Max:2200-2600W
- Voltage: 220-240V/100-127V
- Frequency: 50-60Hz
- Water tank capacity: 270ml
- Soleplate size: 231x120mm
- Unit size: 293x123.5x143mm
- Burst of steam rate: 0.5-0.8g/time
- Continuous steam rate: 15-25g/min
- Packing details as follows
- 10pcs/Carton
- Giftbox Size: 32x13.1x16.6cm
- Carton Meas.: 65x32.5x35cm
- G.W./N.W.: 14/13Kgs.
- 20'=3950pcs; 40'=8100pcs; 40'HQ=9200pcs
- CE/GS/CB/EMC/LVD/ROHS/REACH approval

## Steam Iron In Mid-size



- Dry/Spray/Steam/Burst of steam/Self-cleaning
- Soleplate: Non-Stick/Ceramic Coating/Nano Ceramic/Titanium Coating/Stainless Steel
- High accurate temperature control
- Optional features: anti-calc/anti-drip/auto shut-off
- Overheat safety protection circuit
- Power: 1200W-2400W Max:2200-2600W
- Voltage:220-240V/100-127V
- Frequency: 50-60Hz
- Water tank capacity: 280ml
- Soleplate size: 231x120mm
- Unit size: 290x123x140mm
- Burst of steam rate: 0.4-0.6g/time
- Continuous steam rate: 15-25g/min
- Packing details as follows
- 10pcs/Carton
- Giftbox Size: 31.3x12.5x16.5 cm
- Carton Meas.: 65x32.5x35cm
- G.W./N.W.: 11.4/10.14Kgs
- 20'=3950pcs; 40'=8100pcs;40'HQ=9200pcs
- CE/GS/CB/EMC/LVD/ROHS/REACH approval





### Steam Iron In Mid-size

- Dry/Spray/Steam/Burst of steam/Self-cleaning
- Soleplate: Non-Stick/Ceramic Coating/Nano Ceramic/Titanium Coating/Stainless Steel
- High accurate temperature control
- Optional features: anti-calc/anti-drip/auto shut-off
- Overheat safety protection circuit
- Power: 1200-2400W Max:2200-2600W
- Voltage:220-240V/100-127V
- Frequency: 50-60Hz
- Water tank capacity: 260ml
- Soleplate size: 231x120mm
- Unit size:292x123x145mm
- Burst of steam rate: 0.4-0.6g/time
- Continuous steam rate: 15-25g/min
- Packing details as follows  
10pcs/Carton  
Giftbox Size: 31.3x12.5x16.5cm  
Carton Meas.: 65x32.5x35cm  
G.W./N.W.: 11.4/10.14Kgs  
20'=3950pcs; 40'=8100pcs; 40'HQ=9200pcs
- CE/GS/CB/EMC/LVD/ROHS/REACH approval



### Steam Iron In Mid-size

- Dry/Spray/Steam/Burst of steam/Self-cleaning
- Soleplate: Non-Stick/Ceramic Coating/Nano Ceramic/Titanium Coating/Stainless Steel
- High accurate temperature control
- Optional features: anti-calc/anti-drip/auto shut-off
- Overheat safety protection circuit
- Power: 1200-2400W Max:2200-2600W
- Voltage:220-240V/100-127V
- Frequency: 50-60Hz
- Water tank capacity: 300ml
- Soleplate size: 231x120mm
- Unit 'size: 292x119x143mm
- Burst of steam rate: 0.4-0.6g/time
- Continuous steam rate: 15-25g/min
- Packing details as follows  
10pcs/Carton  
Giftbox Size: 32x13.1x16.6cm  
Carton Meas.: 65x32.5x35cm  
G.W./N.W.: 11.4/10.14Kgs  
20'=3950pcs; 40'=8100pcs;40'HQ=9200pcs
- CE/GS/CB/EMC/LVD/ROHS/REACH approval



### Steam Iron In Mid-size

- Dry/Spray/Steam/Burst of steam/Self-cleaning
- Soleplate: Non-Stick/Ceramic Coating/Nano Ceramic/Titanium Coating/Stainless Steel
- High accurate temperature control
- Optional features: anti-calc/anti-drip/auto shut-off
- Overheat safety protection circuit
- Power: 1200-2400W Max:2200-2600W
- Voltage:220-240V/100-127V
- Frequency: 50-60Hz
- Water tank capacity: 300ml
- Soleplate size: 231x120mm
- Unit size: 286x123x144mm
- Burst of steam rate: 0.4-0.6g/time
- Continuous steam rate: 15-25g/min
- Packing details as follows  
10pcs/Carton  
Giftbox Size: 31x12.4x14.3cm  
Carton Meas.: 65x32.2x.32.1cm  
G.W./N.W.: 14/13Kgs.  
20'=4400pcs; 40'=8800pcs; 40'HQ=10070pcs
- CE/GS/CB/EMC/LVD/ROHS/REACH approval



### Steam Iron In Mid-size

- Dry/Spray/Steam/Burst of steam/Self-cleaning
- Soleplate: Non-Stick/Ceramic Coating/Nano Ceramic/Titanium Coating/Stainless Steel
- High accurate temperature control
- Optional features: anti-calc/anti-drip/auto shut-off
- Overheat safety protection circuit
- Power: 1200-2400W Max:2200-2600W
- Voltage:220-240V/100-127V/50/60Hz
- Frequency: 50-60Hz
- Water tank capacity: 260ml
- Soleplate size: 231x120mm
- Unit size: 290x120x145mm
- Burst of steam rate: 0.4-0.6g/time
- Continuous steam rate: 15-25g/min
- Packing details as follows  
10pcs/Carton  
Giftbox Size: 32x13.1x16.6cm  
Carton Meas.: 65x32.5x35cm  
G.W./N.W.: 11.4/10.14Kgs.  
20'=3950pcs; 40'=8100pcs;40'HQ=9200pcs
- CE/GS/CB/EMC/LVD/ROHS/REACH approval



### Steam Iron In Mid-size



- Dry/Spray/Steam/Burst of steam/Self-cleaning
- Soleplate: Non-Stick/Ceramic Coating/Nano Ceramic/Titanium Coating/Stainless Steel
- High accurate temperature control
- Optional features: anti-calc/anti-drip/auto shut-off
- Overheat safety protection circuit
- Power: 1200W-2400W
- Voltage:220-240V/100-127V
- Frequency: 50-60Hz
- Water tank capacity: 270ml
- Soleplate size: 231x120mm
- Unit size: 292x125x143mm
- Burst of steam rate: 0.4-0.6g/time
- Continuous steam rate: 15-25g/min
- Packing details as follows  
10pcs/Carton  
Giftbox Size: 32x13.1x16.6cm  
Carton Meas.: 65x32.5x35cm  
G.W./N.W.: 11.4/10.14Kgs  
20'=3950pcs; 40'=8100pcs; 40'HQ=9200pcs
- CE/GS/CB/EMC/LVD/ROHS/REACH approval

### Steam Iron In Mid-size



- Dry/Spray/Steam/Burst of steam/Self-cleaning
- Soleplate: Non-Stick/Ceramic Coating/Nano Ceramic/Titanium Coating/Stainless Steel
- High accurate temperature control
- Optional features: anti-calc/anti-drip/auto shut-off
- Overheat safety protection circuit
- Power: 1200W-2400W
- Voltage:220-240V/100-127V
- Frequency: 50-60Hz
- Water tank capacity: 230ml
- Soleplate size:231x120mm
- Unit size: 294x122x142mm
- Burst of steam rate: 0.4-0.6g/time
- Continuous steam rate: 15-25g/min
- Packing details as follows  
10pcs/Carton  
Giftbox Size: 32x13.1x16.6cm  
Carton Meas.: 65x32.5x35cm  
G.W./N.W.: 16/15Kgs.  
20'=3950pcs; 40'=8100pcs; 40'HQ=9200pcs
- CE/GS/CB/EMC/LVD/ROHS/REACH/ETL/CETL approval

### Steam Iron In Mid-size



- Dry/Spray/Steam/Burst of steam/Self-cleaning
- Soleplate: Non-Stick/Ceramic Coating/Nano Ceramic/Titanium Coating/Stainless Steel
- High accurate temperature control
- Optional features: anti-calc/anti-drip/auto shut-off
- Overheat safety protection circuit
- Power: 1200W-2400W
- Voltage:220-240V/100-127V
- Frequency: 50-60Hz
- Water tank capacity:270ml
- Soleplate size: 231x120mm
- Unit size: 295x120x145mm
- Burst of steam rate: 0.4-0.6g/time
- Continuous steam rate: 15-25g/min
- Packing details as follows  
8pcs/Carton  
Giftbox Size: 32x13.1x16.6cm  
Carton Meas.: 54.5x33x35.2cm  
G.W./N.W.: 12/11Kgs.  
20'=3560pcs; 40'=7360pcs; 40'HQ=8080pcs
- CE/GS/CB/EMC/LVD/ROHS/REACH approval

### Steam Iron In Mid-size



- Dry/Spray/Steam/Burst of steam/Self-cleaning
- Soleplate: Non-Stick/Ceramic Coating/Nano Ceramic/Titanium Coating/Stainless Steel
- High accurate temperature control
- Optional features: anti-calc/anti-drip/auto shut-off
- Overheat safety protection circuit
- Power: 1200-2400W Max:2200-2600W
- Voltage:220-240V/100-127V
- Frequency: 50-60Hz
- Water tank capacity: 240ml
- Soleplate size: 231x120mm
- Unit size: 296x120x143mm
- Burst of steam rate: 0.4-0.6g/time
- Continuous steam rate: 15-25g/min
- Packing details as follows  
10pcs/Carton  
Giftbox Size: 31.3x12.5x16.5cm  
Carton Meas.: 65x32.5x35cm  
G.W./N.W.: 11.4/10.14Kgs.  
20'=3950pcs; 40'=8100pcs;40'HQ=9200pcs
- CE/GS/CB/EMC/LVD/ROHS/REACH approval



### Steam Iron In Mid-size



- Dry/Spray/Steam/Burst of steam/Self-cleaning
- Soleplate: Non-stick/Ceramic Coating/Nano Ceramic/Titanium Coating/Stainless Steel
- High accurate temperature control
- Optional features: anti-calc/anti-drip/auto shut-off
- Overheat safety protection circuit
- Power: 1200W-2400W Max:2200-2600W
- Voltage:220-240V/100-127V
- Frequency: 50-60Hz
- Water tank capacity: 300ml
- Soleplate size: 231x120mm
- Unit size: 290x123x140mm
- Burst of steam rate: 0.4-0.6g/time
- Continuous steam rate: 15-25g/min
- Packing details as follows  
10pcs/Carton  
Giftbox Size: 31.3x12.5x16.5cm  
Carton Meas.: 65x32.5x35cm  
G.W./N.W.: 11.4/10.14Kgs.  
20'=3950pcs; 40'=8100pcs;40'HQ=9200pcs
- CE/GS/CB/EMC/LVD/ROHS/REACH approval

### Steam Iron In Mid-size



- Dry/Spray/Steam/Burst of steam/Self-cleaning
- Soleplate: Non-Stick/Ceramic Coating/Nano Ceramic/Titanium Coating/Stainless Steel
- High accurate temperature control
- Optional features: anti-calc/anti-drip/auto shut-off
- Overheat safety protection circuit
- Power: 1200W-2200W
- Voltage:220-240V/100-127V
- Frequency: 50-60Hz
- Water tank capacity: 350ml
- Soleplate size: 229x121mm
- Unit size: 300x120x155mm
- Burst of steam rate: 0.3-0.5g/time
- Continuous steam rate: 15-25g/min
- Packing details as follows  
10pcs/Carton  
Giftbox Size: 31.3x12.5x16.5cm  
Carton Meas.: 65x32.5x35cm  
G.W./N.W.: 14/13Kgs.  
20'=3950pcs; 40'=8100pcs;40'HQ=9200pcs
- CE/GS/CB/EMC/LVD/ROHS/REACH/ETL/CETL approval

### Steam Iron In Mid-size

- Dry/Spray/Steam/Burst of steam/Self-cleaning
- Soleplate: Non-Stick/Ceramic Coating/Nano Ceramic/Titanium Coating/Stainless Steel
- High accurate temperature control
- Optional features: anti-calc/anti-drip/auto shut-off
- Overheat safety protection circuit
- Power: 1200W-2600W
- Voltage:220-240V/100-127V
- Frequency: 50-60Hz
- Water tank capacity: 300ml
- Soleplate size: 229x121mm
- Unit size: 300x120x150mm
- Burst of steam rate: 0.3-0.5g/time
- Continuous steam rate: 15-25g/min
- Packing details as follows  
10pcs/Carton  
Giftbox Size: 31.3x12.5x15.9cm  
Carton Meas.: 65.5x32.5x34cm  
G.W./N.W.: 14.5/13.5Kgs.  
20'=3900pcs; 40'=8060pcs;40'HQ=9500pcs
- CE/GS/CB/EMC/LVD/ROHS/REACH/ETL/CETL approval



### Steam Iron In Mid-size

- Dry/Spray/Steam/Burst of steam/Self-cleaning
- Soleplate: Non-Stick/Ceramic Coating/Nano Ceramic/Titanium Coating/Stainless Steel
- High accurate temperature control
- Optional features: anti-calc/anti-drip/auto shut-off
- Overheat safety protection circuit
- Power: 1200W-2600W
- Voltage:220-240V/100-127V
- Frequency: 50-60Hz
- Water tank capacity: 340ml
- Soleplate size: 229x121mm
- Unit size: 300x120x155mm
- Burst of steam rate: 0.3-0.5g/time
- Continuous steam rate: 15-25g/min
- Packing details as follows  
10pcs/Carton  
Giftbox Size: 31.3x12.5x16.5cm  
Carton Meas.: 65x32.5x35cm  
G.W./N.W.: 14/13Kgs.  
20'=3950pcs; 40'=8100pcs;40'HQ=9200pcs
- CE/GS/CB/EMC/LVD/ROHS/REACH/ETL/CETL approval





### Steam Iron In Mid-size



- Dry/Spray/Steam/Burst of steam/Self-cleaning
- Soleplate: Non-Stick/Ceramic Coating/Nano Ceramic/Titanium Coating/Stainless Steel
- High accurate temperature control
- Optional features: anti-calc/anti-drip/auto shut-off
- Overheat safety protection circuit
- Power: 1200W-2600W
- Voltage:220-240V/100-127V
- Frequency: 50-60Hz
- Water tank capacity: 300ml
- Soleplate size: 229x121mm
- Unit size: 295x120x145mm
- Burst of steam rate: 0.3-0.5g/time
- Continuous steam rate: 15-25g/min
- Packing details as follows  
10pcs/Carton  
Giftbox Size: 31.8x12.6x14.7cm  
Carton Meas.: 65.5x33x31.5cm  
G.W./N.W.: 13/12Kgs.  
20'=4100pcs; 40'=8600pcs;40'HQ=9800pcs
- CE/GS/CB/EMC/LVD/ROHS/REACH/ETL/CETL approval

### Steam Iron In Mid-size



- Dry/Spray/Steam/Burst of steam/Self-cleaning
- Soleplate: Non-Stick/Ceramic Coating/Nano Ceramic/Titanium Coating/Stainless Steel
- High accurate temperature control
- Optional features: anti-calc/anti-drip/auto shut-off
- Overheat safety protection circuit
- Power: 1200W-2600W
- Voltage:220-240V/100-127V
- Frequency: 50-60Hz
- Water tank capacity: 300ml
- Soleplate size: 229x121mm
- Unit size: 305x121x150mm
- Burst of steam rate: 0.4-0.6g/time
- Continuous steam rate: 15-25g/min
- Packing details as follows  
10pcs/Carton  
Giftbox Size: 33x13x18.5cm  
Carton Meas.:69x33.9x34.4cm  
G.W./N.W.: 12/11Kgs.  
20'=2880pcs; 40'=6100pcs; 40'HQ=7130pcs
- CE/GS/CB/EMC/LVD/ROHS/REACH/ETL/CETL approval

### Steam Iron In Mid-size

- Dry/Spray/Steam/Burst of steam/Self-cleaning
- Soleplate: Non-Stick/Ceramic Coating/Nano Ceramic/Titanium Coating/Stainless Steel
- High accurate temperature control
- Optional features: anti-calc/anti-drip/auto shut-off
- Overheat safety protection circuit
- Power: 1200W-2600W
- Voltage:220-240V/100-127V
- Frequency: 50-60Hz
- Water tank capacity: 300ml
- Soleplate size: 229x121mm
- Unit size: 295x120x145.5mm
- Burst of steam rate: 0.3-0.5g/time
- Continuous steam rate: 15-25g/min
- Packing details as follows  
10pcs/Carton  
Giftbox Size: 31.3x12.5x16.5cm  
Carton Meas.: 65x32.5x35cm  
G.W./N.W.: 14/13Kgs.  
20'=3950pcs; 40'=8100pcs;40'HQ=9200pcs
- CE/GS/CB/EMC/LVD/ROHS/REACH approval



### Steam Iron In Mid-size

- Dry/Spray/Steam/Burst of steam
- Soleplate: Non-Stick/Ceramic Coating/Nano Ceramic/Titanium Coating/Stainless Steel
- High accurate temperature control
- Optional features: anti-calc/auto shut-off
- Overheat safety protection circuit
- Power: 1200W-2000W
- Voltage:220-240V/100-127V
- Frequency: 50-60Hz
- Water tank capacity: 350ml
- Soleplate size: 229x120mm
- Unit Size: 300x120x160mm
- Burst of steam rate: 0.3-0.5g/time
- Continuous steam rate: 10-20g/min
- Packing details as follows  
10pcs/Carton  
Giftbox Size: 31.3x12.5x16.5cm  
Carton Meas.: 65x32.5x35cm  
G.W./N.W.: 14/13Kgs.  
20'=3950pcs; 40'=8100pcs; 40'HQ=9200pcs
- CE/GS/CB/EMC/LVD/ROHS/REACH/ETL/CETL approval





### Steam Iron In Mid-size



- Dry/Spray/Steam/Burst of steam/Self-cleaning
- Soleplate: Non-Stick/Ceramic Coating/Nano Ceramic/Titanium Coating/Stainless Steel
- High accurate temperature control
- Optional features: anti-calc/anti-drip/auto shut-off
- Overheat safety protection circuit
- Power: 1200W-2600W
- Voltage:220-240V/100-127V
- Frequency: 50-60Hz
- Water tank capacity: 350ml
- Soleplate size: 229x121mm
- Unit size: 295x120x150mm
- Burst of steam rate: 0.3-0.5g/time
- Continuous steam rate: 15-25g/min
- Packing details as follows  
10pcs/Carton  
Giftbox Size: 30.5x12.4x15.7cm  
Carton Meas.: 65x31.5x33.5cm  
W./N.W.: 13/12Kgs.  
20'=4150pcs; 40'=8310pcs; 40'HQ=9520pcs
- CE/GS/CB/EMC/LVD/ROHS/REACH/ETL/CETL approval

### Steam Iron In Mid-size



- Dry/Spray/Steam/Burst of steam/Self-cleaning
- Soleplate: Non-Stick/Ceramic coating/Nano Ceramic/Titanium Coating/Stainless Steel
- High accurate temperature control
- Optional features: anti-calc/anti-drip/auto shut-off
- Overheat safety protection circuit
- Power: 1200W-2200W
- Voltage:220-240V/100-127V
- Frequency: 50-60Hz
- Water tank capacity: 200ml
- Soleplate size: 229x120mm
- Unit size: 290x120x140mm
- Burst of steam rate: 0.3-0.5g/time
- Continuous steam rate: 10-20g/min
- Packing details as follows  
10pcs/Carton  
Giftbox Size: 29x12.2x14.4cm  
Carton Meas.: 65x30x31.5cm  
G.W./N.W.: 12/11Kgs.  
20'=4400pcs; 40'=9230pcs; 40'HQ=10900pcs
- CE/GS/CB/EMC/LVD/ROHS/REACH/ETL/CETL approval

### Steam Iron In Mid-size

- Dry/Spray/Steam/Burst of steam/Self-cleaning
- Soleplate: Non-Stick/Ceramic Coating/Nano Ceramic/Titanium Coating/Stainless Steel
- High accurate temperature control
- Optional features: anti-calc/anti-drip/auto shut-off
- Overheat safety protection circuit
- Power: 1200W-2200W
- Voltage:220-240V/100-127V
- Frequency: 50-60Hz
- Water tank capacity: 350ml
- Soleplate size: 229x121mm
- Unit size: 295x120x150mm
- Burst of steam rate: 0.3-0.5g/time
- Continuous steam rate: 15-25g/min
- Packing details as follows  
10pcs/Carton  
Giftbox Size: 30.5x12.4x15.7cm  
Carton Meas.: 65x31.5x33.5cm  
G.W./N.W.: 13/12Kgs.  
20'=4150pcs; 40'=8310pcs; 40'HQ=9520pcs
- CE/GS/CB/EMC/LVD/ROHS/REACH approval



### Steam Iron In Mid-size

- Dry/Spray/Steam/Burst of steam/Self-cleaning
- Soleplate: Non-Stick/Ceramic Coating/Nano Ceramic/Titanium Coating/Stainless Steel
- High accurate temperature control
- Optional features: anti-calc/anti-drip/auto shut-c
- Overheat safety protection circuit
- Power: 1200W-2200W
- Voltage:220-240V/100-127V
- Frequency: 50-60Hz
- Water tank capacity: 260ml
- Soleplate size: 229x121mm
- Unit size: 305x120x140mm
- Burst of steam rate: 0.3-0.5g/time
- Continuous steam rate: 15-25g/min
- Packing details as follows  
10pcs/Carton  
Giftbox Size: 32x12.5x15.3cm  
Carton Meas.: 65.5x33.3x33cm  
G.W./N.W.: 14.5/13.5Kgs.  
20'=4060pcs; 40'=8120pcs; 40'HQ=9100pcs
- CE/GS/CB/EMC/LVD/ROHS/REACH/ETL/CETL approval





# OPP & ECONOMIC STEAM IRON



## OPP & Economic Steam Iron



- Dry/Spray/Steam/Burst of steam
- Soleplate: Non-Stick/Ceramic Coating/Nano Ceramic/Titanium Coating/Stainless Steel
- Optional features: anti-calc/anti drip/Auto Shut-Off
- Power: 1200W-2000W
- Voltage: 220-240V/100-127V
- Frequency: 50-60Hz
- Water tank capacity: 210ml
- Soleplate size: 204X110mm
- Unit size: 272x110X140mm
- Burst of steam rate: 0.4-0.6g/time
- Continuous steam rate: 15-25g/min
- Packing details as follows  
10pcs/Carton  
Giftbox Size: 29x12.2X14.4cm  
Carton Meas.: 64X29x30cm  
20'=4400pcs; 40'=9230pcs; 40'HQ=10900pcs
- CE/GS/CB/EMC/LVD/ROHS/REACH approval

## OPP & Economic Steam Iron

- Dry/Spray/Steam/Burst of steam
- Soleplate: Non-Stick/Ceramic Coating/Nano Ceramic/Titanium Coating/Stainless Steel
- Optional features: anti-calc/anti drip
- Power: 1200W-1800W
- Voltage: 220-240V/100-127V
- Frequency: 50-60Hz
- Water tank capacity: 210ml
- Soleplate size: 200X108mm
- Unit size: 250x111X123mm
- Burst of steam rate: 0.3-0.6g/time
- Continuous steam rate: 7-15g/min
- Packing details as follows  
10pcs/Carton  
Giftbox Size: 25.5x11.3X13.7cm  
Carton Meas.: 59.5X26.5x30cm  
20'=6100pcs; 40'=12350pcs; 40'HQ=13750pcs
- CE/GS/CB/EMC/LVD/ROHS/REACH approval







### OPP & Economic Steam Iron



- Dry/Spray/Steam/Burst of steam
- Soleplate: Non-Stick/Ceramic Coating/Nano Ceramic/Titanium Coating/Stainless Steel
- High accurate temperature control
- Optional features: anti-calc/auto shut-off
- Overheat safety protection circuit
- Power: 1200W
- Voltage:220-240V/100-127V
- Frequency: 50-60Hz
- Water tank capacity: 90ml
- Soleplate size: 198x108mm
- Unit size: 265x105x120mm
- Burst of steam rate: 0.3-0.5g/time
- continuous steam rate: 10-20g/min
- Packing details as follows
- 10pcs/Carton
- Giftbox Size: 27.2x11.2x13.8cm
- Carton Meas.: 59.5x28.5x30cm
- G.W./N.W.: 12/11Kgs.
- 20'=5280pcs; 40'=11190pcs; 40'HQ=12790pcs
- CE/GS/CB/EMC/LVD/ROHS/REACH/ETL/CETL approval

### OPP & Economic Steam Iron

- Dry/Spray/Steam/Burst of steam
- Soleplate: Non-Stick/Ceramic Coating/Nano Ceramic/Titanium Coating/Stainless Steel
- Optional features: anti-calc/auto shut-off
- Overheat safety protection circuit
- Power: 1200-2000W
- Voltage:220-240v/100-127V
- Frequency: 50-60Hz
- Water tank capacity: 180ml
- Soleplate size:198x105mm
- Unit size: 270x105x130mm
- Burst of steam rate: 0.3-0.5g/time
- Continuous steam rate: 10-20g/min
- Packing details as follows
- Giftbox Size: 27.2x10.7x14.5cm
- Carton Meas.: 57x28.5x31.5cm
- G.W./N.W.: 11/10Kgs.
- 20'=5590pcs; 40'=11830pcs;40HQ=13300pcs
- CE/GS/CB/EMC/LVD/ROHS/REACH/ETL/CETL approval



### OPP & Economic Steam Iron

- Dry/Spray/Steam/Burst of steam/Self-cleaning
- Soleplate: Non-Stick/Ceramic Coating/Nano Ceramic/Titanium Coating/Stainless Steel
- High accurate temperature control
- Overheat safety protectioncircuit
- Power: 1200W
- Voltage:220-240V/110-127V
- Frequency: 50-60Hz
- Water tank capacity: 120ml
- Soleplate size: 198x108mm
- Unit size: 255x110x125mm
- Burst of steam rate: 0.3-0.5g/ time
- Continuous steam rate: 10-20g/min
- Packing details as follows
- 10pcs/Carton
- Giftbox Size: 26.5x11.2x13cm
- Carton Meas.: 59.5x28x28.5cm
- G.W./N.W.: 12/11 Kgs
- 20'=5990pcs; 40'=12390pcs; 40'HQ=14400pcs
- CE/GS/CB/ETL/CETL approval





### OPP & Economic Steam Iron



- Dry/Spray/Steam/Burst of steam
- Soleplate: Non-Stick/Ceramic Coating/Nano Ceramic/Titanium Coating/Stainless Steel
- High accurate temperature control
- Optional features: anti-calc/overheat safety protection circuit
- Power: 1400W
- Voltage: 220-240V/100-127V
- Frequency: 50-60Hz
- Water tank capacity: 100ml
- Soleplate size: 198x105mm
- Unit size: 245x105x120mm
- Burst of steam rate: 0.3-0.5g/time
- Continuous steam rate: 10-20g/min
- Packing details as follows  
10pcs/Carton  
Giftbox Size: 27.2x11.2x13.8cm  
Carton Meas.: 59.5x28.5x30cm  
G.W./N.W.: 12/11Kgs.  
20'=5280pcs; 40'=11190pcs; 40'HQ=12790pcs
- CE/GS/CB/EMC/LVD/ROHS/REACH approval

### OPP & Economic Steam Iron



- Dry/Spray/Steam/Burst of steam
- Soleplate: Non-Stick/Ceramic Coating/Nano Ceramic/Titanium Coating/Stainless Steel
- High accurate temperature control
- Optional features: anti-calc/auto shut-off
- Overheat safety protection circuit
- Power: 1600W
- Voltage: 220-240V/100-127V
- Frequency: 50-60Hz
- Water tank capacity: 200ml
- Soleplate size: 214x115mm
- Unit size: 280x115x140mm
- Burst of steam rate: 0.3-0.5g/time
- continuous steam rate: 15-25g/min
- Packing details as follows  
10pcs/Carton  
Giftbox Size: 28.7x11.8x15.7cm  
Carton Meas.: 62x30x33.5cm  
G.W./N.W.: 12/11Kgs.  
20'=4380pcs; 40'=9280pcs; 40'HQ=10380pcs
- CE/GS/CB/EMC/LVD/ROHS/REACH/ETL/CETL approval

### OPP & Economic Steam Iron

- Dry/Spray/Steam
- Soleplate: Non-Stick/Ceramic Coating/Nano Ceramic/Titanium Coating/Stainless Steel
- High accurate temperature control
- Overheat safety protection circuit
- Power: 1400W
- Voltage: 220-240V/100-127V
- Frequency: 50-60Hz
- Water tank capacity: 60ml
- Soleplate size: 187x99mm
- Unit size: 230x100x105mm
- Burst of steam rate: 0.3-0.5g/time
- Continuous steam rate: 10-20g/min.
- Packing details as follows  
10 pcs/Carton  
Giftbox Size: 23.8x10.3x11.8cm  
Carton Meas.: 54.5x25x25.5cm  
G.W./N.W.: 9/8Kgs.  
20'=7900pcs; 40'=16180pcs; 40'HQ=17980pcs
- CE/GS/CB/EMC/LVD/ROHS/REACH/ETL/CETL approval





### OPP & Economic Steam Iron



- Dry/Spray/Steam/Burst of steam
- Soleplate: Non-Stick/Ceramic Coating/Nano Ceramic/Titanium Coating/Stainless Steel
- High accurate temperature control
- Optional features: anti-calc
- Overheat safety protection circuit
- Power: 1200W-2000W
- Voltage:220-240V/100-127V
- Frequency: 50-60Hz
- Water tank capacity: 200ml
- Soleplate size: 198x105mm
- Unit size: 270x107x132mm
- Burst of steam rate: 0.3-0.5g/time
- Continuous steam rate: 15-25g/min
- Packing details as follows  
10pcs/Carton  
Giftbox Size: 29.5x12x14.8cm  
Carton Meas.: 62.5x30.5x31.7cm  
G.W./N.W.: 9/8Kgs.  
20'=4400pcs; 40=9250pcs;40'HQ=10600pcs
- CE/GS/CB/EMC/LVD/ROHS/REACH approval

### OPP & Economic Steam Iron



- Dry/Spray/Steam/Burst of steam
- Soleplate: Non-Stick/Ceramic Coating/Nano Ceramic/Titanium Coating/Stainless Steel
- High accurate temperature control
- Optional features: anti-calc
- Overheat safety protection circuit
- Power: 1200W-2000W
- Voltage:220-240V/100-127V
- Frequency: 50-60Hz
- Water tank capacity: 200ml
- Soleplate size: 198x105mm
- Unit size: 266x107x130mm
- Burst of steam rate: 0.3-0.5g/time
- Continuous steam rate: 15-25g/min
- Packing details as follows  
10pcs/Carton  
Giftbox Size: 29.5x12x14.8cm  
Carton Meas.: 62.5x30.5x31.7cm  
G.W./N.W.: 9/8Kgs.  
20=4400pcs; 40=9250pcs;40'HQ=10600pcs
- CE/GS/CB/EMC/LVD/ROHS/REACH approval

### OPP & Economic Steam Iron



- Dry/Spray/Steam/Burst of steam
- Soleplate: Non-Stick/Ceramic Coating/Nano Ceramic/Titanium Coating/Stainless Steel
- High accurate temperature control
- Optional features: anti-cal
- Overheat safety protection circuit
- Power: 1200W-2000W
- Voltage:220-240V/100-127V
- Frequency: 50-60Hz
- Water tank capacity: 200ml
- Soleplate size: 198x105mm
- Unit size: 270x107x132mm
- Burst of steam rate:0.3-0.5g/time
- Continuous steam rate: 15-25g/min
- Packing details as follows  
10pcs/Carton  
Giftbox Size: 29.5x12x14.8cm  
Carton Meas.: 62.5x30.5x31.7cm  
G.W./N.W.: 9/8Kgs.  
20'=4400pcs; 40=9250pcs;40'HQ=10600pcs
- CE/GS/CB/EMC/LVD/ROHS/REACH/ETL/CETL approval

### OPP & Economic Steam Iron



- Dry/Spray/Steam/Burst of steam
- Soleplate: Non-Stick/Ceramic Coating/Nano Ceramic/Titanium Coating/Stainless Steel
- High accurate temperature control
- Optional features: anti-calc
- Overheat safety protection circuit
- Power: 1200W-2000W
- Voltage:220-240V/100-127V
- Frequency: 50-60Hz
- Water tank capacity: 200ml
- Soleplate size: 198x105mm
- Unit size: 268x105x148mm
- Burst of steam rate: 0.3-0.5g/time
- Continuous steam rate: 15-25g/min
- Packing details as follows  
10pcs/Carton  
Giftbox Size: 29.5x12x14.8cm  
Carton Meas.: 62.5x30.5x31.7cm  
G.W./N.W.: 9/8Kgs.  
20'=4400pcs; 40'=9250pcs; 40'HQ=10600pcs
- CE/GS/CB/EMC/LVD/ROHS/REACH approval



### OPP & Economic Steam Iron



- Dry/Spray/Steam/Burst of steam/Self-cleaning
- Soleplate: Non-Stick/Ceramic Coating/Nano Ceramic/Titanium Coating/Stainless Steel
- High accurate temperature
- Optional features: anti-calc/anti-drip/auto shut-off
- Overheat safety protection
- Power: 1200W-2000W
- Voltage:220-240V/100-127V
- Frequency: 50-60Hz
- Water tank capacity: 250ml
- Soleplate size: 205x111mm
- Unit size: 270x113x133mm
- Burst of steam rate: 0.3-0.5g/time
- Continuous steam rate: 15-25g/min
- Packing details as follows  
10pcs/Carton  
Giftbox Size:29.5 x12x15.3cm  
Carton Meas.: 62.5x31x32.7cm  
G.W./N.W.: 11.4/10.14Kgs.  
20'=4400pcs; 40'=9020pcs; 40'HQ=10100pcs
- CE/GS/CB/EMC/LVD/ROHS/REACH approval

### OPP & Economic Steam Iron



- Dry/Spray/Steam/Burst of steam/Self-cleaning
- Soleplate: Non-Stick/Ceramic Coating/Nano Ceramic/Titanium Coating/Stainless Steel
- High accurate temperature control
- Optional features: anti-calc/anti-drip/auto shut-off
- Overheat safety protection circuit
- Power:1200W-2000W
- Voltage:220-240V/100-127V
- Frequency: 50-60Hz
- Water tank capacity: 250ml
- Soleplate size: 205x111mm
- Unit size: 270x111x136mm
- Burst of steam rate: 0.4-0.7g/time
- Continuous steam rate: 10-15g/min
- Packing details as follows  
• 10pcs/Carton  
Giftbox Size: 29.5 x12x15.3cm  
Carton Meas.: 62.5x31x32.7cm  
G.W./N.W.: 11.4/10.14Kgs.  
20'=4400pcs; 40'=9020pcs; 40'HQ=10100pcs
- CE/GS/CB/EMC/LVD/ROHS/REACH/ETL/CETL approval

# CORDLESS STEAM IRON





### Cordless Steam Iron

- Dry/Spray/Steam/Burst of steam/Cordless
- Soleplate: Non-Stick/Ceramic Coating/Nano Ceramic/Titanium Coating/Stainless Steel
- High accurate temperature control
- Optional features: anti-calc
- Overheat safety protection circuit
- Power: 1200W-1800W
- Voltage:220-240V/100-127V
- Frequency: 50-60Hz
- Water tank capacity: 180ml
- Soleplate size: 198x105mm
- Unit size: 280x107x210mm
- Burst of steam rate: 0.3-0.5g/time
- Continuous steam rate: 10-20g/min
- Packing details as follows
- 10pcs/Carton
- Giftbox Size: 26.5x12.2x21.5cm
- Carton Meas.: 63.5x27.6x45cm
- G.W./N.W.: 13/12Kgs.
- 20'=3600pcs; 40'=7260pcs; 40'HQ=8100pcs
- CE/GS/CB/EMC/LVD/ROHS/REACH approval

### Cordless Steam Iron

- Dry/Spray/Steam/Burst of steam/Cordless
- Soleplate: Non-Stick/Ceramic Coating/Nano Ceramic/Titanium Coating/Stainless Steel
- High accurate temperature control
- Optional features: anti-calc
- Overheat safety protection circuit
- Power: 1200W-1800W
- Voltage:220-240V/100-127V
- Frequency: 50-60Hz
- Water tank capacity: 180ml
- Soleplate size: 198x105mm
- Unit size: 280x107x210mm
- Burst of steam rate: 0.3-0.5g/time
- Continuous steam rate: 10-20g/min
- Packing details as follows
- 10pcs/Carton
- Giftbox Size: 26.5x12.2x21.5cm
- Carton Meas.: 63.5x27.6x45cm
- G.W./N.W.: 13/12Kgs.
- 20'=3600pcs; 40'=7260pcs; 40'HQ=8100pcs
- CE/GS/CB/EMC/LVD/ROHS/REACH approval

### Cordless Steam Iron

- Dry/Spray/Steam/Burst of steam/Cordless
- Soleplate: Non-Stick/Ceramic Coating/Nano Ceramic/Titanium Coating/Stainless Steel
- High accurate temperature control
- Overheat safety protection circuit
- Power: 1200W
- Voltage:220-240V/100-127V
- Frequency: 50-60Hz
- Water tank capacity: 120ml
- Soleplate size: 198x108mm
- Unit size: 270x107x220mm
- Burst of steam rate: 0.3-0.5g/time
- Continuous steam rate: 10-20g/min
- Packing details as follows
- 10pcs/Carton
- Giftbox Size: 27.5x12.6x20.6cm
- Carton Meas.: 66x28.5x43cm
- G.W./N.W.: 13/12Kgs.
- 20'=3600pcs; 40'=7260pcs; 40'HQ=8100pcs
- CE/GS/CB/EMC/LVD/ROHS/REACH approval

### Cordless Steam Iron

- Dry/Spray/Steam/Burst of steam/Cordless
- Soleplate: Non-Stick/Ceramic Coating/Nano Ceramic/Titanium Coating/Stainless Steel
- High accurate temperature control
- Overheat safety protection circuit
- Power: 1200W
- Voltage:220-240V/100-127V
- Frequency: 50-60Hz
- Water tank capacity: 120ml
- Soleplate size: 198x108mm
- Unit size: 256x117x220mm
- Burst of steam rate: 0.3-0.5g/time
- Continuous steam rate: 10-20g/min
- Packing details as follows
- 10pcs/Carton
- Giftbox Size: 27.5x12.6x20.6cm
- Carton Meas.: 66x28.5x43cm
- G.W./N.W.: 13/12Kgs.
- 20'=3600pcs; 40'=7260pcs; 40'HQ=8100pcs
- CE/GS/CB/EMC/LVD/ROHS/REACH approval





### Cordless Steam Iron

- Dry/Spray/Steam/Cordless
- Soleplate: Non-Stick/Ceramic Coating/Nano Ceramic/Titanium Coating/Stainless Steel
- High accurate temperature control
- Overheat safety protection circuit
- Power: 1200W
- Voltage:220-240V/100-127V
- Frequency: 50-60Hz
- Water tank capacity: 60ml
- Soleplate size: 187x99mm
- Unit size: 258x107x195mm
- Burst of steam rate: 0.3-0.5g/time
- Continuous steam rate: 10-20g/min
- Packing details as follows  
10pcs/Carton  
Giftbox Size: 25.6x11.6x18.6cm  
Carton Meas.:61x27x39cm  
G.W./N.W.: 11/10Kgs.  
20'=4550pcs; 40'=9100pcs; 40'HQ=9600pcs
- CE/GS/CB/EMC/LVD/ROHS/REACH approval



### Cordless Steam Iron

- Dry/Spray/Steam/Cordless
- Soleplate: Non-Stick/Ceramic Coating/Nano Ceramic/Titanium Coating/Stainless Steel
- High accurate temperature control
- Overheat safety protection circuit
- Power: 1200W
- Voltage:220-240V/100-127V
- Frequency: 50-60Hz
- Water tank capacity: 60ml
- Soleplate size: 189x101mm
- Unit size: 240x117x195mm
- Burst of steam rate: 0.3-0.5g/time
- Continuous steam rate: 10-20g/min
- Packing details as follows  
10pcs/Carton  
Giftbox Size: 25.6x11.6x18.6cm  
Carton Meas.:61x27x39cm  
G.W./N.W.: 11/10Kgs.  
20'=4550pcs; 40'=9100pcs; 40'HQ=9600pcs
- CE/GS/CB/EMC/LVD/ROHS/REACH approval



### Cordless Steam Iron

- Dry/Spray/Steam/Burst of steam/Cordless
- Soleplate: Non-Stick/Ceramic Coating/Nano Ceramic/Titanium Coating/Stainless Steel
- High accurate temperature control
- Optional features: anti-calc
- Overheat safety protection circuit
- Power: 1200W-2000W
- Voltage:220-240V/100-127V
- Frequency: 50-60Hz
- Water tank capacity: 200ml
- Soleplate size: 198x105mm
- Unit Size: 282x107x220mm
- Burst of steam rate: 0.3-0.5g/time
- Continuous steam rate: 15-25g/min
- Packing details as follows  
10pcs/Carton  
Giftbox Size: 29x12.5x21.5cm  
Carton Meas.: 65x30x45cm  
G.W./N.W.:13.5/12.5Kgs.  
20'=3230pcs; 40'=6560pcs; 40'HQ=7600pcs
- CE/GS/CB/EMC/LVD/ROHS/REACH approval



### Cordless Steam Iron

- Dry/Spray/Steam/Burst of steam/Cordless
- Soleplate: Non-Stick/Ceramic Coating/Nano Ceramic/Titanium Coating/Stainless Steel
- High accurate temperature control
- Optional features: anti-calc
- Overheat safety protection circuit
- Power: 1200W-2000W
- Voltage:220-240V/100-127V
- Frequency: 50-60Hz
- Water tank capacity: 200ml
- Soleplate size: 198x105mm
- Unit size: 265x117x220mm
- Burst of steam rate: 0.3-0.5g/time
- Continuous steam rate: 15-25g/min
- Packing details as follows  
10pcs/Carton  
Giftbox Size: 29x12.5x21.5cm  
Carton Meas.: 65x30x45cm  
G.W./N.W.: 13.5/12.5Kgs.  
20'=3230pcs; 40'=6560pcs; 40'HQ=7600pcs
- CE/GS/CB/EMC/LVD/ROHS/REACH approval

# CORD RETRACTABLE STEAM IRON

## Cord Retractable Steam Iron



- Dry/Spray/Steam/Burst of steam/Self-cleaning/Cord retractable
- Soleplate: Non-Stick/Ceramic Coating/Nano Ceramic/Titanium Coating/Stainless Steel
- High accurate temperature control
- Optional features: anti-calc/anti-drip/auto shut-off
- Overheat safety protection circuit
- Power: 1200W-1500W
- Voltage: 120V~
- Frequency: 60Hz
- Water tank capacity: 350ml
- Soleplate size: 229x121mm
- Unit size: 330x120x155mm
- Burst of steam rate: 0.3-0.5g/time
- Continuous steam rate: 15-25g/min
- Packing details as follows  
10pcs/Carton
- Giftbox Size: 34.6x12.4x15.4cm
- Carton Meas.: 64.5x35.6x32.8cm
- G.W./N.W.: 16/15Kgs.
- 20'=3750pcs; 40'=7550pcs; 40'HQ=8390pcs
- ETL/CETL approval

## Cord Retractable Steam Iron



- Dry/Spray/Steam/Burst of steam/Self-cleaning/Cord retractable
- Soleplate: Non-Stick/Ceramic Coating/Nano Ceramic/Titanium Coating/Stainless Steel
- High accurate temperature control
- Optional features: anti-calc/anti-drip/auto shut-off
- Overheat safety protection circuit
- Power: 1200W
- Voltage: 120V~
- Frequency: 60Hz
- Water tank capacity: 340ml
- Soleplate size: 229x121mm
- Unit size: 330x120x155mm
- Burst of steam rate: 0.3-0.5g/time
- Continuous steam rate: 15-25g/min
- Packing details as follows  
10pcs/Carton
- Giftbox Size: 34.6x12.4x15.4cm
- Carton Meas.: 64.5x35.6x32.8cm
- G.W./N.W.: 16/15Kgs.
- 20'=3750pcs; 40'=7550pcs; 40'HQ=8390pcs
- ETL/CETL approval

## Cord Retractable Steam Iron



- Dry/Spray/Steam/Burst of steam/Self-cleaning/Cord retractable
- Soleplate: Non-Stick/Ceramic Coating/Nano Ceramic/Titanium Coating/Stainless Steel
- High accurate temperature control
- Optional features: anti-calc/antidrip/auto shut-off
- Overheat safety protection circuit
- Power: 1200W
- Voltage: 120V~
- Frequency: 60Hz
- Water tank capacity: 350ml
- Soleplate size: 229x121mm
- Unit size: 320x120x150mm
- Burst of steam rate: 0.3-0.5g/time
- Continuous steam rate: 15-25g/min
- Packing details as follows  
10pcs/Carton
- Giftbox Size: 33.3x12.5x15.3cm
- Carton Meas.: 64.8x34.5x32.8cm
- G.W./N.W.: 13.5/12.5Kgs.
- 20'=3800pcs; 40'=7900pcs; 40'HQ=8840pcs
- ETL/CETL approval

## Cord Retractable Steam Iron



- Dry/Spray/Steam/Burst of steam/Self-cleaning/Cord retractable
- Soleplate: Non-Stick/Ceramic Coating/Nano Ceramic/Titanium Coating/Stainless Steel
- High accurate temperature control
- Optional features: anti-calc/antidrip/auto shut-off
- Overheat safety protection circuit
- Power: 1200W
- Voltage: 120V~
- Frequency: 60Hz
- Water tank capacity: 200ml
- Soleplate size: 229x120mm
- Unit size: 315x120x140mm
- Burst of steam rate: 0.3-0.5g/time
- Continuous steam rate: 10-20g/min
- Packing details as follows  
12pcs/Carton
- Giftbox Size: 33.4x12.7x14.3cm
- Carton Meas.: 55.4x34x47.8cm
- G.W./N.W.: 13.5/12.5Kgs.
- 20'=3640pcs; 40'=6400pcs; 40'HQ=12120pcs
- ETL/CETL approval

## Cord Retractable Steam Iron



- Dry/Spray/Steam/Burst of steam/Self-cleaning/Cord retractable
- Soleplate: Non-Stick/Ceramic Coating/Nano Ceramic/Titanium Coating/Stainless Steel
- High accurate temperature control
- Optional features: anti-calc/anti-drip/auto shut-off
- Overheat safety protection circuit
- Power: 1200W-1500W
- Voltage: 120V~
- Frequency: 60Hz
- Water tank capacity: 260ml
- Soleplate size: 229x121mm
- Unit size: 305x120x140mm
- Burst of steam rate: 0.3-0.5g/time
- Continuous steam rate: 15-25g/min
- Packing details as follows  
10pcs/Carton
- Giftbox Size: 32x12.5x14.7cm
- Carton Meas.: 65.5x33.3x31.8cm
- G.W./N.W.: 14/13Kgs.
- 20'=4030pcs; 40'=8350pcs; 40'HQ=9350pcs
- ETL/CETL approval





### Cord Retractable Steam Iron

- Dry/Spray/Steam/Burst of steam/Self-cleaning/Cord retractable
- Soleplate: Non-Stick/Ceramic Coating/Nano Ceramic/Titanium Coating/Stainless Steel
- High accurate temperature control
- Optional features: anti-calc/anti-drip/auto shut-off
- Overheat safety protection circuit
- Power: 1200W
- Voltage: 120V
- Frequency: 60Hz
- Water tank capacity: 270ml
- Soleplate size: 229x121mm
- Unit size: 300x120x150mm
- Burst of steam rate: 0.4-0.6g/time
- Continuous steam rate: 20-30g/min
- Packing details as follows  
10pcs/Carton  
Giftbox Size: 31.3x12.5x15.3cm  
Carton Meas.: 65.5x32.5x33cm  
G.w./N.W.: 14/13Kgs.  
20'=4100pcs; 40'=8300pcs; 40'HQ=9450pcs
- ETL/CETL approval



### Cord Retractable Steam Iron

- Dry/Spray/Steam/Burst of steam/Self-cleaning/Cord retractable
- Soleplate: Non-Stick/Ceramic Coating/Nano Ceramic/Titanium Coating/Stainless Steel
- High accurate temperature control
- Optional features: anti-calc/anti-drip/auto shut-off
- Overheat safety protection circuit
- Power: 1200W-2200W
- Voltage: 220-240V~
- Frequency: 50-60Hz
- Water tank capacity: 270ml
- Soleplate size: 229x121mm
- Unit size: 330x120x150mm
- Burst of steam rate: 0.4-0.6g/time
- Continuous steam rate: 20-30g/min
- Packing details as follows  
10pcs/Carton  
Giftbox Size: 34.2x12.5x15.5cm  
Carton Meas.: 64.8x35.2x33.5cm  
G.w./N.W.: 14/13Kgs.  
20'=3500pcs; 40'=7720pcs; 40'HQ=9160pcs
- CE/GS/CB/EMC/LVD/ROHS/REACH approval

### Cord Retractable Steam Iron

- Dry/Spray/Steam/Burst of steam/Self-cleaning/Cord retractable
- Soleplate: Non-Stick/Ceramic Coating/Nano Ceramic/Titanium Coating/Stainless Steel
- High accurate temperature control
- Optional features: anti-calc/anti-drip/auto shut-off
- Overheat safety protection circuit
- Power: 1200W
- Voltage: 120V
- Frequency: 60Hz
- Water tank capacity: 90ml
- Soleplate size: 198x108mm
- Unit size: 290x105x120mm
- Burst of steam rate: 0.3-0.5g/time
- Continuous steam rate: 10-20g/min
- Packing details as follows  
10pcs/Carton  
Giftbox Size: 30.5x11.2x12.8cm  
Carton Meas.: 58.5x31.5x27.8cm  
G.W./N.W.: 13/12Kgs.  
20'=4370pcs; 40'=10740pcs; 40'HQ=12282pcs
- ETL/CETL approval



# DRY IRON



### Dry Iron

- Dry/Spray
- Soleplate: Non-Stick/Ceramic Coating/Nano Ceramic/Titanium Coating/Stainless Steel
- High accurate temperature control
- Overheat safety protection circuit
- Power: 1000W
- Voltage: 220-240V~
- Frequency: 50-60Hz
- Water tank capacity: 30ml
- Soleplate size: 198x105mm
- Unit size: 260x105x120mm
- Packing details as follows  
10pcs/Carton  
Giftbox Size: 26.5x10.9x13.1cm  
Carton Meas.: 57.5x28x29cm  
G.W./N.W.: 10/9Kgs.  
20'=6070pcs; 40'=12460pcs; 40'HQ=14020pcs
- CE/GS/CB/EMC/LVD/ROHS/REACH approval



### Dry Iron

- Dry
- Soleplate: Non-Stick/Ceramic coating/Nano Ceramic/Titanium Coating/Stainless Steel
- High accurate temperature control
- Overheat safety protection circuit
- Power: 1000W/1100W
- Voltage: 220-240V
- Frequency: 50-60Hz
- Soleplate size: 198x105mm
- Unit size: 260x105x120mm
- Packing details as follows  
10pcs/Carton  
Giftbox Size: 26.5x10.9x13.1cm  
Carton Meas.: 57.5x28x29cm  
G.W./N.W.: 10/9Kgs.  
20'=6070pcs; 40'=12460pcs; 40'HQ=14020pcs
- CE/GS/CB/EMC/LVD/ROHS/REACH approval



### Dry Iron

- Dry
- Soleplate: Non-Stick/Ceramic Coating/Nano Ceramic/Titanium Coating/Stainless Steel
- High accurate temperature control
- Overheat safety protection circuit
- Power: 1000W
- Voltage: 220-240V
- Frequency: 50-60Hz
- Soleplate size: 198x105mm
- Unit size: 260x105x130mm
- Packing details as follows  
10pcs/Carton  
Giftbox Size: 26.5x10.9x13.7cm  
Carton Meas.: 57.5x28x30cm  
G.W./N.W.: 10/9Kgs.  
20'=6060pcs; 40'=12150pcs; 40'HQ=13670pcs
- CE/GS/CB/EMC/LVD/ROHS/REACH approval



### Dry Iron

- Dry
- Soleplate: Non-Stick/Ceramic coating/Nano Ceramic/ Titanium Coating/Stainless Steel
- High accurate temperature control
- Overheat safety protection circuit
- Power: 350-1200W
- Voltage: 220-240V
- Frequency: 50-60Hz
- Soleplate size: 200x107mm
- Unit size: 250x110x121mm
- Packing details as follows  
10pcs/ Carton  
Giftbox Size: 25.5x113x137cm  
Carton Meas.: 59.5x26.5x30cm  
G.W./N.W.: 7.5/6.8Kgs.  
20'=6100pcs; 40'=12350pcs; 40'HQ=13750pcs
- CE/GS/CB/EMC/LVD/ROHS/REACH approval



### Dry Iron

- Dry
- Soleplate: Non-Stick/Ceramic coating/Nano Ceramic/ Titanium Coating/Stainless Steel
- High accurate temperature control
- Overheat safety protection circuit
- Power: 400-1200W
- Voltage: 100-230V
- Frequency: 50-60Hz
- Soleplate size: 113x212mm
- Unit size: 256x113x110mm
- Packing details as follows  
10pcs/ Carton  
Giftbox Size: 26x11.8x11.8cm  
Carton Meas.: 60.5x27.5x25.5cm  
G.W./N.W.: 10/9Kgs.  
20'=TBA; 40'=TBA; 40'HQ=TBA
- CE/GS/CB/EMC/LVD/ROHS/REACH approval



### SOLEPLATES



Enamel Soleplate



Ionic Coating



Brushed SS Finish



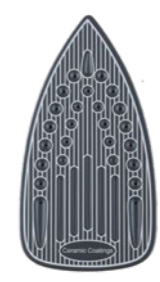
Anodized Soleplate/Composite Soleplate



Nano Ceramic Coating



Non-Stick



Regular Ceramic Coating



Stainless Steel



Titanium Coating

**WE CAN OFFER VARIOUS SOLEPLATES OPTIONAL !!!**





# Kitchen Appliances

*A good day always starts with delicacy!!*

## Pancake Maker

- Electronic temperature control.
- 6 Temperature Setting: 120 °C, 190 °C, 200 °C, 220 °C and 240 °C.
- Voltage/Wattage: 220-240V/1500-2000W , 100-127V/1000-1200W.
- Frequency: 50-60Hz.
- Time adjustment: 1-15 minutes.
- The baking plate is replaceable.
- 4-pack plates: steak plate, waffle plate, pizza plate and sandwich plate.
- The pancake plate bakes four cakes at a time, and the cake is in size of 100mm.
- Packing details: 20'=TBA; 40'=TBA; 40'HQ=TBA.
- CE/GS/CB/EMC/LVD/ROHS/REACH approval.







# Personal Care

*Beautiful makeup starts from the head.*

## Professional BLDC Hair Dryer



### Functional Features:

- Voltage: 100-240V~
- Frequency: 50-60Hz
- Rated Wattage: 1600W
- Max Airflow Speed: > 18m/s
- BLDC Motor speed: > 110000rpm
- Negative Ion quantity: > 1.5x10<sup>8</sup> ions/m<sup>3</sup>
- Product size: (95+51)x71x277mm
- Packing details: 20'=TBA; 40'=TBA; 40'HQ=TBA
- **Temperature Setting:** cool air, hot air at low and high temperature.
- **Airflow Speed:** Low speed, high speed.
- **BLDC High Speed Motor(110,000 rpm).**
- **Diffusor Type:** Air Concentrator with concentrated airflow.
- **Quick Hair Drying :** short hair for 2-3 minutes for short hair and 3-5 minutes for long hair.
- **Hair Quality Applied:** Neutral, dry, oily, rough, soft.
- **Applicable Crowd:** students, pregnant women, teenagers, adults.
- **Applicable Scenarios:** campus, home, professional salon.







### Ultra-Fast Multi-Brush Styler Kits



#### Functional Features:

- Voltage: 100V-240V ~
- Frequency: 50-60Hz
- Rated Wattage: 1200W
- Max Airflow Speed: > 18m/s
- BLDC Motor Speed: > 110000rpm
- Negative Ion quantity: > 1.5x10<sup>8</sup> ions/m<sup>3</sup>
- Unit size: 401x99x73mm
- Packing details: 20'=TBA; 40'=TBA; 40'HQ=TBA

- **Multi-Function:** Comb hair while blowing dry, whirlwind forward and reverse automatic curling hair.
- **Temperature Setting:** cool air, hot air at low and high temperature.
- **Airflow Speed:** Low speed, high speed.
- **Air Nozzle Type:** Diffusion nozzle, styling nozzle, hair smoothing nozzle.
- **Hair Quality Applied:** Neutral hair, dry hair, oily hair, rough hair, sofa hair.
- **Applicable Crowd:** students, pregnant women, teenagers, adults.
- **Applicable Scenarios:** campus, home, professional salon.

### Hair Dryer



#### Functional Features:

- Voltage/Wattage: 100V/1500W, 110-127V/1500-1900W, 220-240V/1800-2200W
- Frequency: 50-60Hz
- Max Airflow Speed: > 7m/s
- DC Motor Speed: > 18000rpm
- Product size: (203+60)x86x271mm
- Packing details: 20'=TBA; 40'=TBA; 40'HQ=TBA

- **Temperature Setting:** cool air, hot air at low and high temperature.
- **Diffusor Type:** Air Concentrator with concentrated airflow.
- **Hair Quality Applied:** Neutral, dry, oily, rough, soft.
- **Applicable Crowd:** students, pregnant women, teenagers, adults.
- **Applicable Scenarios:** campus, home, professional salon.





## Curling Iron



### Functional Features:

- Voltage: 100-240V ~
- Frequency: 50-60Hz
- Rated Wattage: 30-35W
- Max. Temperature: 220°C
- Product size: (320+50)x68x40mm
- Packing details: 20'=TBA; 40'=TBA; 40'HQ=TBA

- **Power Cord Style:** 360 °rotation.
- **Temperature Setting:** One temperature setting with constant temperature control.
- **Long-lasting styling, supple hair.**
- **Applicable Crowd:** students, pregnant women, teenagers, adults.
- **Applicable Scenarios:** campus, home, professional salon.
- **PTC Heating Plate.**

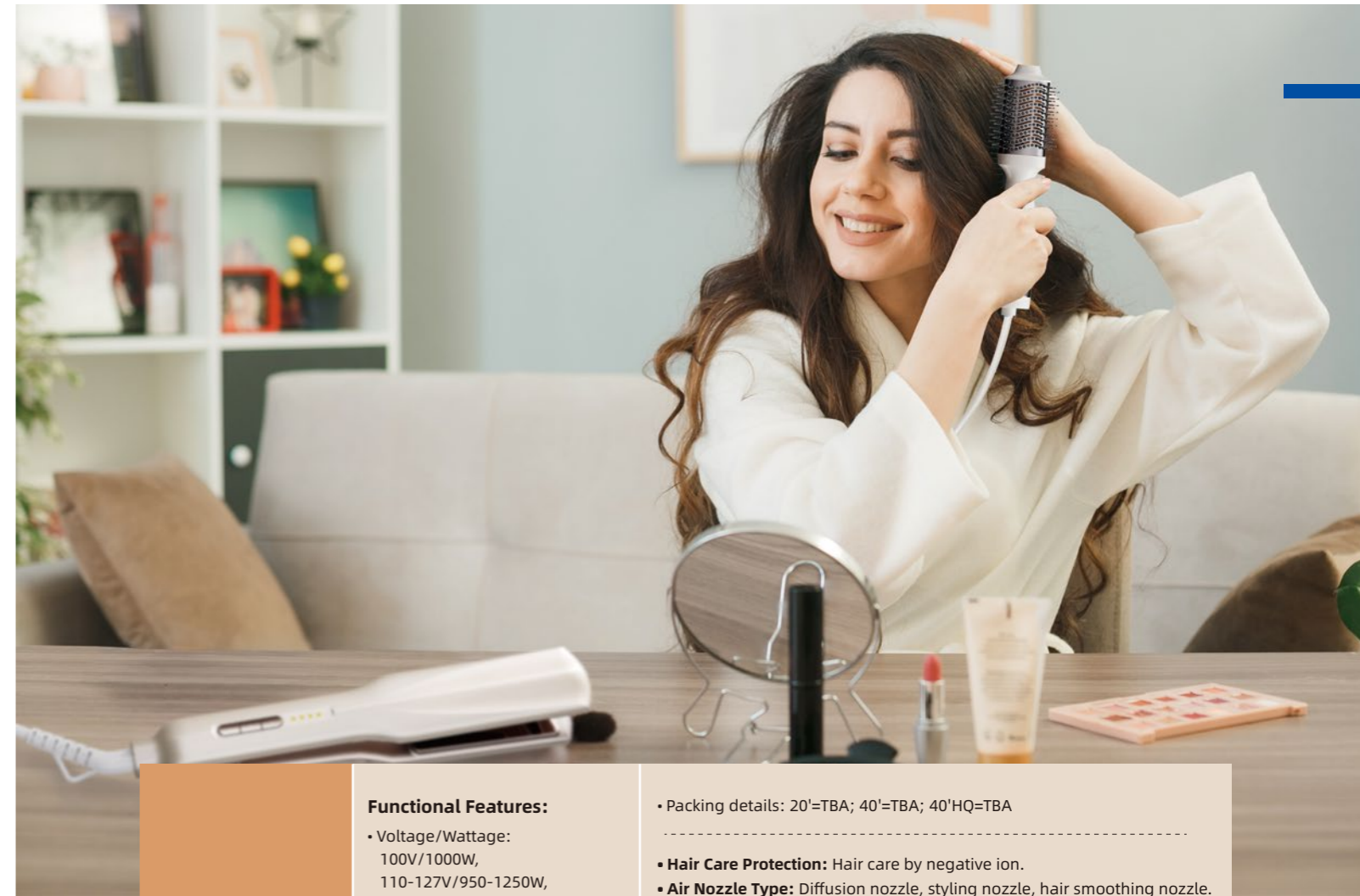
## Eyebrow Trimmer



### Functional Features:

- Voltage: 1.5V ---
- Rated Wattage: 3W
- Product size: 164x26x30mm
- Packing details: 20'=TBA; 40'=TBA; 40'HQ=TBA

- **Multi-Purpose:** trimming eyebrows, trimming hair, trimming beard, shaving baby hair.
- **Small size, easy to carry.**
- **Light weight, easily create exquisite eyebrows at will.**
- **It is safe and does not hurt the skin.**



## Hot Air Brush

### Functional Features:

- Voltage/Wattage: 100V/1000W, 110-127V/950-1250W, 220-240V/1100-1300W
- Frequency: 50-60Hz
- Rated Wattage: 1200W
- Max Airflow Speed: > 10m/s
- Motor speed: > 18000rpm
- Negative Ion quantity: > 1.5x10<sup>8</sup> ions/m<sup>3</sup>
- Product size: (362+50)x99x73mm

- Packing details: 20'=TBA; 40'=TBA; 40'HQ=TBA

- **Hair Care Protection:** Hair care by negative ion.
- **Air Nozzle Type:** Diffusion nozzle, styling nozzle, hair smoothing nozzle.
- **Hair Quality Applied:** Damaged hair, sofa hair, neutral hair, normal hair, oily hair.
- **Power Cord Style:** 360 °rotation.
- **Temperature at different airflow speed:** normal temperature with low speed, medium temperature with fluffy, hot air with high speed.
- **Applicable Crowd:** students, pregnant women, teenagers, adults.
- **Applicable Scenarios:** campus, home, professional salon.







**Functional Features:**

- Voltage:110V/220V ~
- Frequency:50-60Hz
- Rated Wattage:30W~50W
- Max. Temperature:220°C
- Product size: 341x46x37mm(L)/341x32x37mm
- Packing details: 20'=TBA; 40'=TBA; 40'HQ=TBA
  
- **Power Cord Style:** 360 ° rotation.
- **Temperature Setting:** Smart temperature control, 4 temperature settings, from 140 °C to 220 °C.
- **Applicable crowd:** students, pregnant women, teenagers, adults.
- **Applicable Scenarios:** campus, home, professional salon.

**Hair Straightener (L) / (M) / (S)**

