

**Les  
nouveau**tés**  
Mai 2024**

# Introduction

GPS Monaco Group, votre partenaire de confiance pour le sourcing international de produits LED de qualité supérieure.

Notre mission est d'apporter de la lumière à votre monde. En tant que spécialistes de l'industrie LED, nous sommes fiers de vous présenter notre dernière brochure, mettant en vedette une sélection soigneusement choisie de produits innovants.

Notre expertise nous permet de vous offrir une gamme complète de solutions d'éclairage intérieur et extérieur, des ampoules LED écoénergétiques aux luminaires d'avant-garde. De plus, si vous possédez déjà une marque, nos produits sont entièrement personnalisables pour répondre à vos besoins uniques et refléter votre identité !

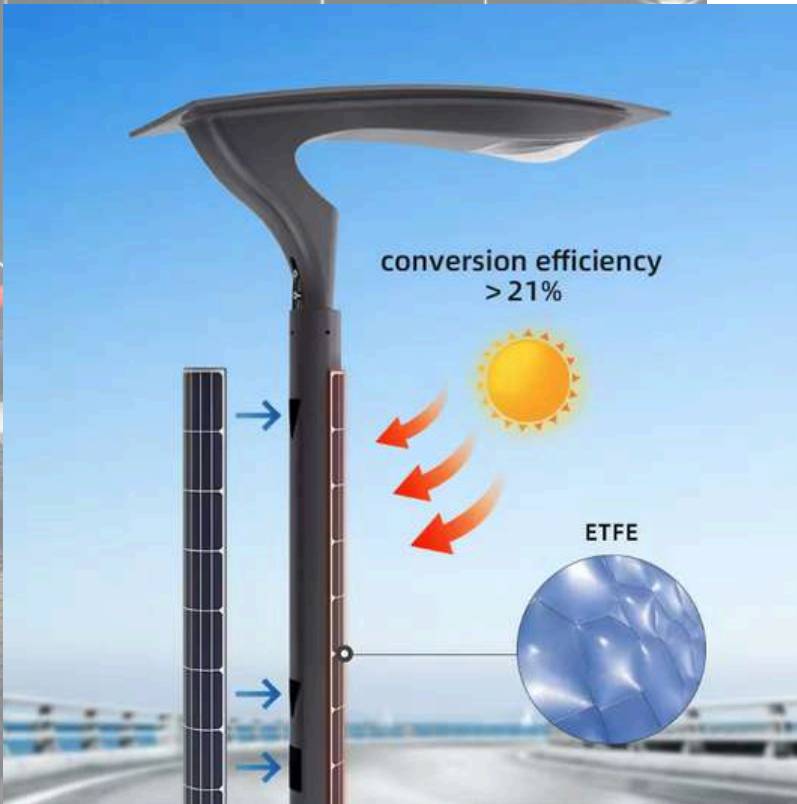
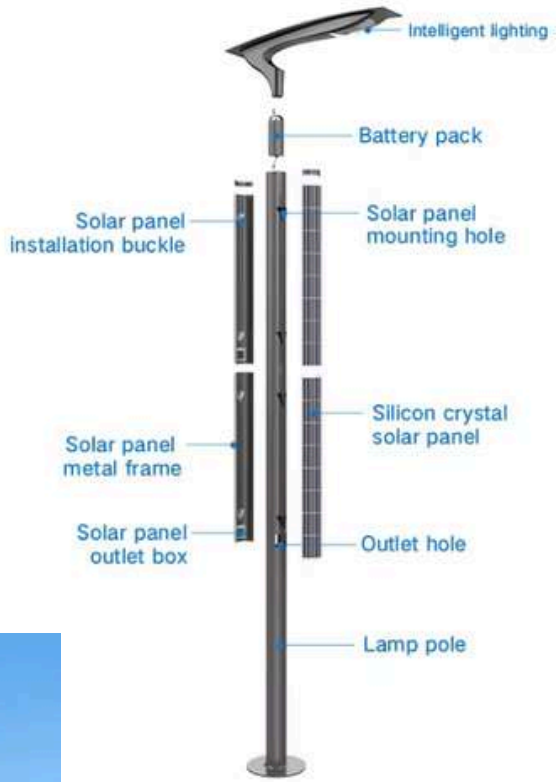
Découvrez notre sélection exceptionnelle de produits et faites de la lumière le cœur de votre environnement !

# Solar LED Street Light

## Product Parameter



Product model	
Pole height	4m, 6m, 8m
Lamp bead power	30W, 40W, 60W
Luminous flux	4500lm, 6000lm, 9000lm
Battery capacity	36AH/12.8VDC, 48AH/12.8VDC, 72AH/12.8VDC
Solar panel power	160W/18V, 240W/18V, 400W/18V
Control mode	100%0.5h+80%2.5h+50%2h+20%7h (3 cloudy and rainy days)
Working mode	Light control + Time control
Color Temperature	3000K/4000K/5700K
Beam angle	110°×70°
Light pole shape	circle
Light body color	Industrial grey



# Solar LED Street Light with Motion Sensor and Remote Control



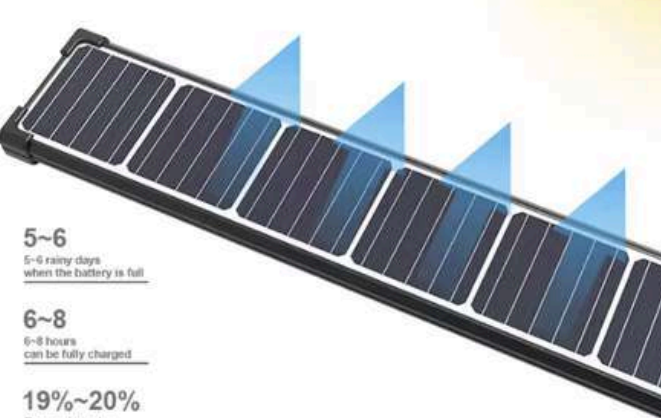
No light fading spot, uniform light, long service life  
LED lens, using excellent PC material, high light transmittance,  
Uniform refraction of light, anti-glare, better quality



**Solar Power Charging  
Photoelectric Conversion  
Efficiency >22%**

(The average photovoltaic conversion of polycrystalline silicon solar panels is only 12%)

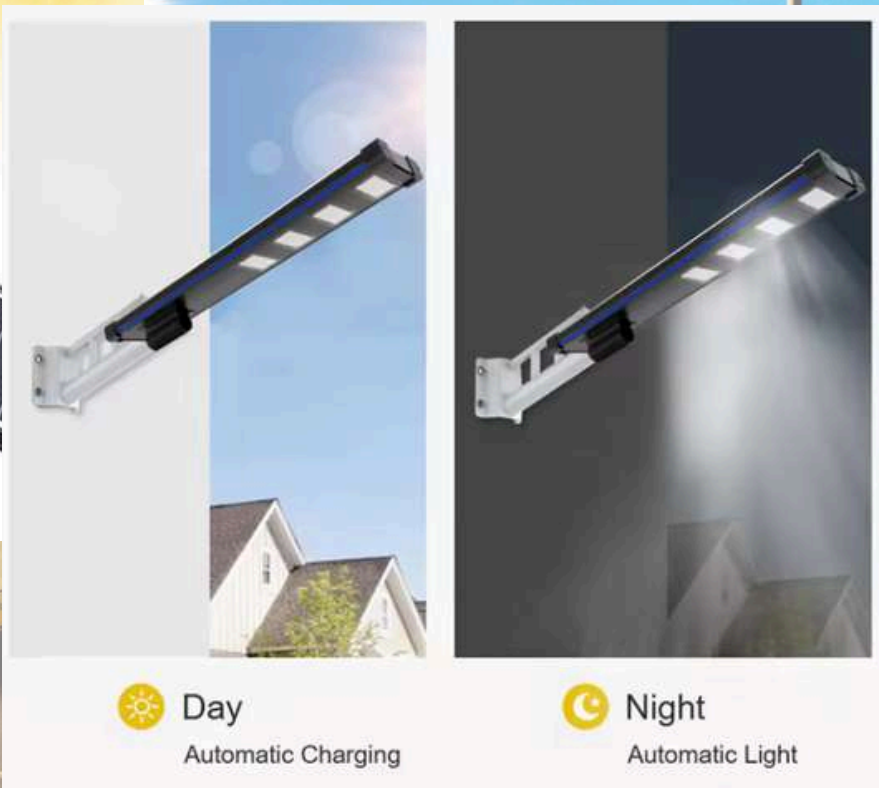
Lifespan > 20 years



5~6  
5-6 rainy days  
when the battery is full

6~8  
6-8 hours  
can be fully charged

19%~20%  
Conversion rates  
are as high as 19%-20%



 **Day**  
Automatic Charging

 **Night**  
Automatic Light

# LED Solar Light



ITEM NO.	Lumen	Battery Capacity	Solar Panel	Lamp Size	Material
	1600LM	15AH	6V_19W-390*300*15MM	451*212*51MM	Aluminum housing +PCcover
	2000LM	20AH	6V_25W-390*360*15MM	515*211*51MM	Aluminum housing +PCcover
	2400LM	25AH	6V_30W-430*390*15MM	580*220*51MM	Aluminum housing +PCcover

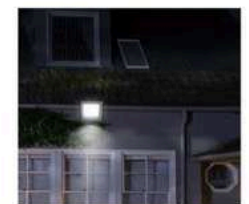
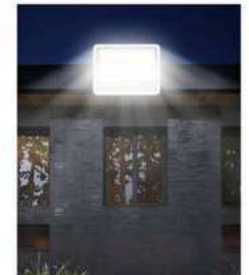


## PIR SENSOR

- Light on if the Ambient lux is less than the setting lux or any organism is detected in detection range
- Detection Angle: 120°
- Detection Range: 8M(±2M) max (<24°C)
- Light on Time Setting: 10Sec(±3s) -10min(±2min)
- Light on Lux: < 5-2000 lux



\*BATTERY REPLACEABLE



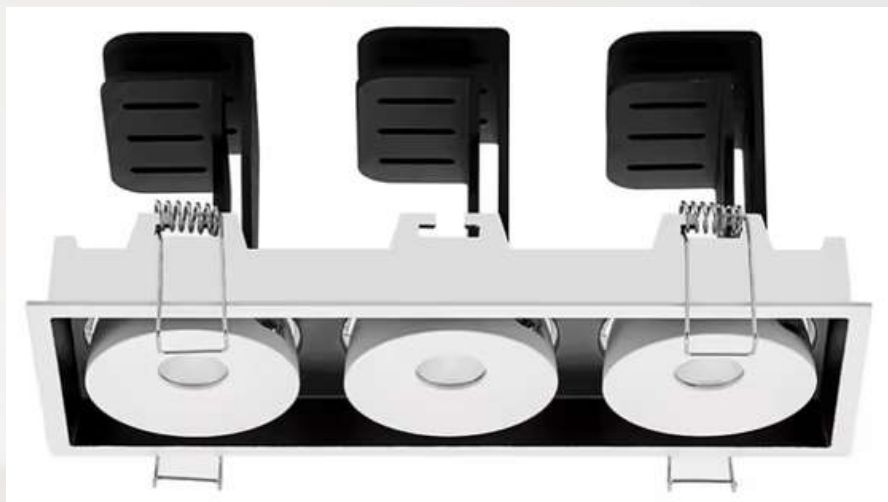
ITEM NO.	Wattage	Lumen	Battery Capacity	Solar Panel	Lamp Size	Material
	50W	600LM	3.2V/5AH	6V,7W-180*270*15MM	226*155*46MM	Aluminum+PC
	100W	1200LM	3.2V/10AH	6V,12W-235*350*15MM	226*155*46MM	Aluminum+PC
	200W	1800LM	3.2V/15AH	6V,16W-290*350*15MM	243*178*48MM	Aluminum+PC
	300W	2500LM	3.2V/20AH	6V,20W-400*350*15MM	283*208*48MM	Aluminum+PC
	400W	3500LM	3.2V/24AH	6V,24W-450*350*15MM	283*208*48MM	Aluminum+PC



# LED Ceiling Light



# Adjustable Downlight LED Spot



# LED Downlights



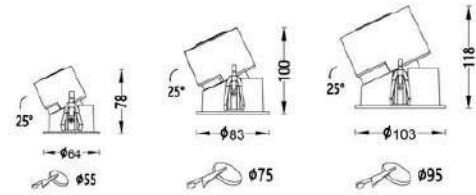
## TECHNICAL DATA

Model	83*78mm	83*100mm	103*118mm
Lamp size	54*78mm	83*100mm	103*118mm
Cutout size	55mm	75mm	95mm
Power	7W	17W	18W
CCT	4000K	4000K	4000K
CRI	>80	>80	>80
Lumens Output	200LM	900LM	1200LM
LED	COB	COB	COB
Beam angle	45°	45°	45°
Fire-proof Level	V0	V0	V0
AC Input	200V-240V AC	200V-240V AC	200V-240V AC
Working Tp	-20°C ~ +50°C	-20°C ~ +50°C	-20°C ~ +50°C
IP Level	IP54	IP54	IP54
Certification	CE, RoHS	CE, RoHS	CE, RoHS
Material	Aluminum	Aluminum	Aluminum
Warranty	3Years	3Years	3Years

## ACCESSORIES



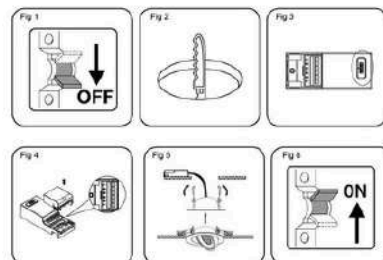
## INSTALLATION



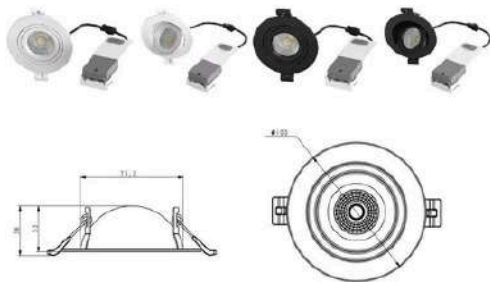
## TECHNICAL DATA

Model	Dimmable	2 CCT-Tuning & Loading Edge
Lamp size	100*33mm	Beam angle 40°
Cutout size	75mm	Fire-proof Level V0
Power	8W	AC Input 220V-240V AC
CCT	2700K/3000K/4000K	Working Tp -20°C ~ +50°C
CRI	>80	IP Level IP65
Lumens Output	750/920/100LM	Certification CE, RoHS
LED	COB	Material Aluminum
SDCM	<6	Warranty 5years

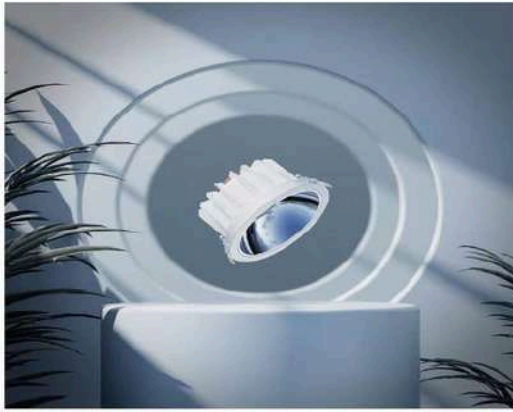
## INSTALLATION



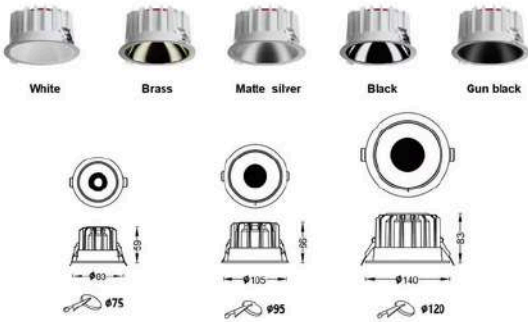
## DETAILS







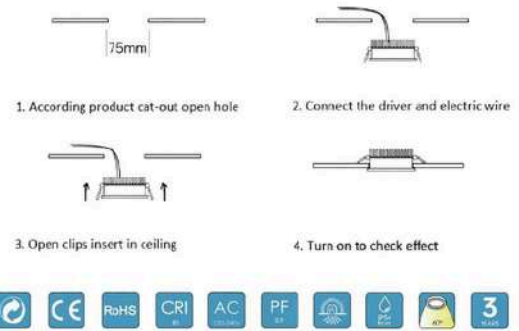
### ACCESSORIES



### TECHNICAL DATA

Model			
Lamp size	83*59mm	105*66mm	140*83mm
Cutout size	75mm	95mm	120mm
Power	7W	12W	18W
Color	White/Black	White/Black	White/Black
CCT	3000K/4000K/6000K	3000K/4000K/6000K	3000K/4000K/6000K
CRI	> 80	> 80	> 80
Lumens Output	500LM	800LM	1200LM
LED	COB	COB	COB
Beam angle	60°	90°	60°
Fire-proof Level	V0	V0	V0
AC Input	200V-240V AC	200V-240V AC	200V-240V AC
Working Tp	-20°C ~ +50°C	-20°C ~ +50°C	-20°C ~ +50°C
IP Level	IP54	IP54	IP54
Certification	CE,ROHS	CE,ROHS	CE,ROHS
Material	Aluminum	Aluminum	Aluminum
Warranty	3Years	3Years	3Years

### INSTALLATION



### DETAILS



### TECHNICAL DATA

Model		Dimmable	3CCT+Trailing& LeadingEdge
Lamp size	86*80*54mm	Beam angle	60°
Cutout size	55-70mm	Fire-proof Level	V0
Power	6W	AC Input	220V-240V AC
CCT	3000K/4000K/6000K	Working Tp	-20°C ~ +50°C
CRI	>=80	IP Level	IP65
Lumens Output	550/600/650LM	Certification	CE,ROHS
LED	SMD	Material	Aluminum
SDCM	<6	Warranty	5Years

### INSTALLATION



# Portable Solar Multifunctional Work Light



## TYPE-C CHARGING

TYPE-C interface multi-mode charging, notebook computer, mobile power supply, charger, car charger



## MAIN LIGHT SEVEN-LEVEL LIGHT ADJUSTMENT



## HOOK DESIGN

Strong clip attaches to backpacks, clothespockets, etc.



## MULTIFUNCTIONAL WORK LIGHT

A good partner for outdoor camping



TYPE-C



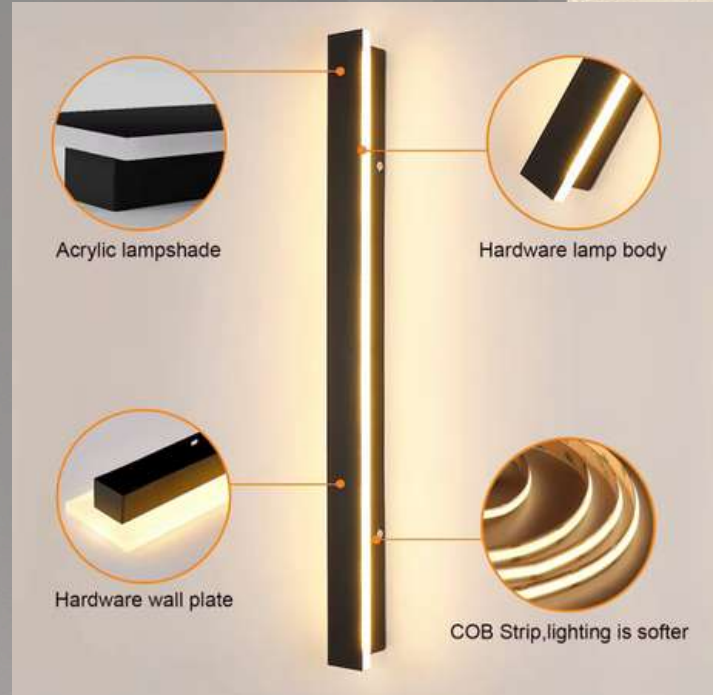
8-50H



800LM



# Linear LED Wall Light Cob



3000k  
Warm Light

4500k  
Neutral light

6000k  
White Light



Outdoor

Indoor

# LED Strip Light



- **Double-Sided strip lights, expanding the current 120° lighting range to 120° x2, so a wide range 240° for up and down light ON.**



- **A strong emergency backup system for power the strip lights for 2h battery time extra, when there is sudden blackout.**



- **AC110V with CEE plug or AC230V with EU plug series, connectable length can be up to 100 meters.**
- **Adding night light effect, fluorescent green built-in the strip, and when the mains are cut, the GREEN light will be AUTO ON, leading the way to exit.**



