

Light bulbs Catalog



PAGE OF CONTENT

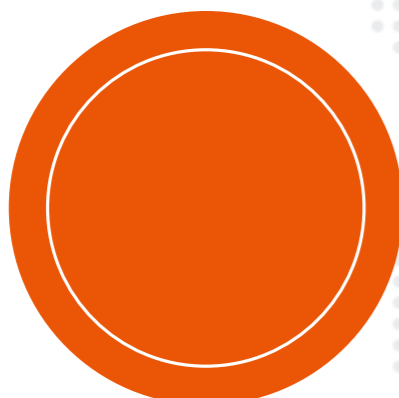
LED INTELLIGENT LAMP SERIES 01-04

LED GENERAL LAMP SERIES 05-12

LED INDOOR LUMINAIRES SERIES 13-24

LED OUTDOOR LUMINAIRES SERIES 25-38

UV LIGHT SERIES 39-40



LED INTELLIGENT LAMP SERIES



LED INTELLIGENT LAMP SERIES



WIFI RGB INTELLIGENT DIMMABLE BULBS

WATTAGE(W)	7 (LINEAR/ON-OFF)	9 (LINEAR/ON-OFF)
LUMINOUS(LM)	600	800
COLOR	RGB+CW	RGB+CW
CONTROL MODE	App/Alexa/GoogleAssistant	App/Alexa/GoogleAssistant
SUITABLE PHONE OS	Android 4.3/IOS7.0	Android 4.3/IOS7.0
CERTIFICATE	NEW CE/ERP	NEW CE/ERP
DRIVER	IC	IC



SMART CANDLE LAMP

WATTAGE(W)	4.9	
OPERATING TEMP	0.5	
DRIVER	IC	
EMC	YES	
BEAM ANGLE	160°	
DRIVER	IC	



SMART RGB GU10

WATTAGE(W)	4.9	
OPERATING TEMP	0.5	
DRIVER	IC	
EMC	YES	
BEAM ANGLE	100°	
DRIVER	IC	

IR REMOTE CONTROL LAMP



CE CB RoHS



7W

9W

$\Phi 60 \times 108 \text{mm}$
 220-240V
 ≥ 80
 E27
 15000 H
 PF ≥ 0.5
 IP 20

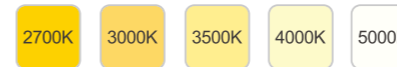
SUITABLE FOR LAMPS



COLOR



CCT



CRI



GPS-01

GPS-02

	GPS-01	GPS-02
Modle	7W	9W
Operating Voltage	220-240V	220-240V
Operating Frequency	50/60	50/60
Input Power $\pm 10\%$	7W	9W
Luminous $\pm 10\%$	600LM	806LM
Operating Temp	-20~40°	-20~40°
Dimensions	$\Phi 60 \times 108 \text{mm}$	$\Phi 60 \times 112 \text{mm}$
Weight	N/A	N/A
Driver	IC	IC
EMC	YES	YES
Dimmable	NO	NO

LED GENERAL LAMP SERIES

LED GENERAL LAMP SERIES

GPS-03

LIGHT CONTROL BULBS-A60

	VOLTAGE(V) 220-240(110-254)		CCT(K) 2700-7000		BASE E27/E26/B22		PF ≥0.5
	MATERIAL PLASTIC		CRI ≥80		IP 20		LIFETIME(H) ≥15000

WATTAGE(W)	7	9
LUMINOUS(LM)	560	720
DIMENSION(MM)	Φ60x107	Φ60x107
INDUCTION MODE	LIGHT CONTROL	LIGHT CONTROL
INDUCED LUMINANCE	15LX/30LX	15LX/30LX
DRIVER	ICLINEAR	ICLINEAR



GPS-04

RADAR SENSOR+ LIGHT CONTROL BULBS-A60

	VOLTAGE(V) 220-240(110-254)		CCT(K) 2700-7000		BASE E27/E26/B22		PF ≥0.5
	MATERIAL PLASTIC		CRI ≥80		IP 20		LIFETIME(H) ≥15000

WATTAGE(W)	7	9
LUMINOUS(LM)	560	720
DIMENSION(MM)	Φ60x107	Φ60x107
DRIVER	ICLINEAR	ICLINEAR



GPS-05

BULB SERIES-A37

	VOLTAGE(V) 90-110		CCT(K) 3000/5000/6500		BASE E17		PF ≥0.5
	MATERIAL PLASTIC		CRI ≥80		IP 20		LIFETIME(H) ≥4000

WATTAGE(W)	2.1	4.1	6.1
LUMINOUS(LM)	280/300	530/560	780/810
DIMENSION(MM)	Φ38x78	Φ38x78	Φ38x78
DRIVER	IC	IC	IC



GPS-06

BULB SERIES-A60

	VOLTAGE(V) 100-265		CCT(K) 3000/4000/6500		BASE E27		PF ≥0.5
	MATERIAL PLASTIC		CRI ≥80		IP 20		LIFETIME(H) ≥4000

WATTAGE(W)	10	13	16
EFFICACY(LM/W)	110/115	110/115	110/115
DIMENSION(MM)	Φ60x110	Φ60x120	Φ70x140
DRIVER	IC	IC	IC



GPS-07

BULB SERIES-A60

	VOLTAGE(V) 90-110		CCT(K) 3000/5000/6500		BASE E26		PF ≥0.5		IP 20
	MATERIAL PLASTIC		CRI ≥80		BEAM ANGLE 260°		LIFETIME(H) ≥4000		

WATTAGE(W)	2.8	4.8	7.8
LUMINOUS(LM)	340/350	560/590	840/880
DIMENSION(MM)	Φ60x110	Φ60x110	Φ60x110
DRIVER	IC	IC	IC



GPS-08

BULB SERIES-A65

	VOLTAGE(V) 90-110		CCT(K) 3000/5000/6500		BASE E26		PF ≥0.5
	MATERIAL PLASTIC		CRI ≥80		IP 20		LIFETIME(H) ≥4000

WATTAGE(W)	12.5
LUMINOUS(LM)	1530/1560
DIMENSION(MM)	Φ65x125
DRIVER	IC



LED GENERAL LAMP SERIES

GPS-09

POWER ADJUSTABLE BULB-A65



- VOLTAGE(V) 230V(100-240VAC)
- CCT(K) 2700-7000
- BASE E27/E26/B22
- MATERIAL PLASTIC
- PF ≥0.5
- CRI ≥80
- IP 20
- LIFETIME(H) ≥15000

WATTAGE(W)	14
LUMINOUS(LM)	1100
DIMENSION(MM)	Φ60x120
DRIVER	IC/LINEAR

GPS-10

LED G45



- VOLTAGE(V) 110-264/170-264
- CCT(K) 2700-7000
- BASE E27
- PF ≥0.5
- CRI ≥80
- BEAM ANGLE 200°
- MATERIAL PLASTIC
- LIFETIME(H) ≥15000

WATTAGE(W)	5
LUMINOUS(LM)	400
DIMENSION(MM)	Φ45x82
DRIVER	DOB/IC/LINEAR

GPS-11

BULB SERIES



- VOLTAGE(V) 110-264/170-264
- CCT(K) 2700-7000
- BASE E27/E26/B22
- PF ≥0.5
- MATERIAL PLASTIC
- CRI ≥80
- BEAM ANGLE 220°
- LIFETIME(H) ≥15000

MODEL	A50	A55	A60	A65	A70	A80	A95
WATTAGE(W)	3/5	5/7	7/9/10/12	12	15	18	20/24
LUMINOUS(LM)	270/450	450/630	630/810 900/1080	1080	1350	1620	1800/2160
DIMENSION(MM)	Φ50x89	Φ55x103	Φ60x110	Φ65x127	Φ70x134	Φ80x154	Φ95x167
DRIVER	DOB/IC/LINEAR	DOB/IC/LINEAR	DOB/IC/LINEAR	DOB/IC/LINEAR	DOB/IC/LINEAR	DOB/IC/LINEAR	DOB/IC/LINEAR

GPS-12

CANDLE C37



- VOLTAGE(V) 110-264/170-264
- CCT(K) 2700-7000
- BASE E14
- PF ≥0.5
- CRI ≥80
- BEAM ANGLE 260° / 220°
- MATERIAL PLASTIC
- LIFETIME(H) ≥15000

WATTAGE(W)	5
LUMINOUS(LM)	400
DIMENSION(MM)	Φ37x105/Φ37x100/Φ37x124
DRIVER	IC/LINEAR

GPS-13

CANDLE C35



- VOLTAGE(V) 110-264/170-264
- CCT(K) 2700-7000
- BASE E14
- PF ≥0.5
- CRI ≥80
- BEAM ANGLE 260°
- MATERIAL PLASTIC
- LIFETIME(H) ≥15000

WATTAGE(W)	5
LUMINOUS(LM)	350
DIMENSION(MM)	Φ35x103/Φ37x123
DRIVER	IC

LED GENERAL LAMP SERIES

GPS-14

LED MR16



- VOLTAGE(V) DC12V
- CCT(K) 3000/6500
- CRI ≥80
- BASE GU5.3
- BEAM ANGLE 36°
- MATERIAL PLASTIC+AL
- LIFETIME(H) ≥15000

WATTAGE(W)	7.5	8
LUMINOUS(LM)	540/600	576/640
DIMENSION(MM)	Φ49.5x53	Φ49.5x53
DRIVER	IC	IC

GPS-15

LED GU10



- VOLTAGE(V) 110-264/170-264
- CCT(K) 2700-7000
- BASE GU10
- PF ≥0.5
- CRI ≥80
- BEAM ANGLE 40°
- MATERIAL PLASTIC
- LIFETIME(H) ≥15000

WATTAGE(W)	5
LUMINOUS(LM)	325
DIMENSION(MM)	Φ50x55
DRIVER	IC

GPS-16

LED MR16



- VOLTAGE(V) 110-264/220-240
- CCT(K) 2700-7000
- CRI ≥80
- BASE GU10/GU5.3
- BEAM ANGLE 36° / 100°
- MATERIAL PLASTIC
- LIFETIME(H) ≥15000

WATTAGE(W)	4.9	7
LUMINOUS(LM)	400	560/595
DIMENSION(MM)	Φ50x54	Φ50x54
DRIVER	IC/LINEAR	IC/LINEAR

LED T LAMP-A

Plastic Aluminum



- VOLTAGE(V) 110-264
- CCT(K) 2700-7000
- BEAM ANGLE 220°
- PF ≥0.5
- CRI ≥80
- LIFETIME(H) ≥15000
- IP 20
- BASE E27/E26/B22
- MATERIAL PLASTIC

MODEL	GPS-17	GPS-18	GPS-19	GPS-20
WATTAGE(W)	20	30	40	50
LUMINOUS(LM)	1800	2700	3600	4500
DIMENSION(MM)	Φ80x149	Φ100x180	Φ118x209	Φ138x245
DRIVER	DOB/LINEAR	DOB/LINEAR	DOB/LINEAR	DOB/LINEAR

LED T LAMP-B

Plastic Aluminum



- VOLTAGE(V) 110-264
- CCT(K) 2700-7000
- CRI ≥80
- BASE E27/E26/B22
- MATERIAL PLASTIC
- IP 20
- LIFETIME(H) ≥15000
- BEAM ANGLE 220°

MODEL	GPS-21	GPS-22	GPS-23	GPS-24
WATTAGE(W)	20	30	40	50
LUMINOUS(LM)	1700	2550	3400	4250
DIMENSION(MM)	Φ80x130	Φ100x150	Φ118x175	Φ138x200
DRIVER	DOB/LINEAR	DOB/LINEAR	DOB/LINEAR	DOB/LINEAR

GPS-19

LED T LAMP-C

Plastic Aluminum



- VOLTAGE(V) 110-264
- CCT(K) 2700-7000
- BASE E27/E26/B22
- PF ≥0.5
- MATERIAL PLASTIC
- CRI ≥80
- IP 20
- LIFETIME(H) ≥15000
- BEAM ANGLE 220°

MODEL	GPS-25	GPS-26	GPS-27	GPS-28	GPS-29
WATTAGE(W)	20	30	40	50	55
LUMINOUS(LM)	1700	2550	3200	3950	4675
DIMENSION(MM)	Φ80x143	Φ100x166	Φ120x202	Φ140x227	Φ160x276
DRIVER	DOB/LINEAR	DOB/LINEAR	DOB/LINEAR	DOB/LINEAR	DOB/LINEAR

LED GENERAL LAMP SERIES



LED T LAMP-D

Plastic Aluminum

- VOLTAGE(V) 110-264
- CCT(K) 2700-7000
- BEAMANGLE 220°
- PF ≥0.5
- CRI ≥80
- LIFETIME(H) ≥15000
- IP 20
- BASE E27/E26/B22
- MATERIAL PLASTIC

MODEL	GPS-30	GPS-31	GPS-32	GPS-33
WATTAGE(W)	20	30	40	50
LUMINOUS(LM)	1700	2550	3200	3950
DIMENSION(MM)	Φ80x143	Φ100x166	Φ120x202	Φ140x227
DRIVER	DOBILINEAR	DOBILINEAR	DOBILINEAR	DOBILINEAR



LED T LAMP-E

Die-Casting Aluminum

- VOLTAGE(V) 170-264
- CCT(K) 3000-6500
- BASE E27/E26
- PF ≥0.5
- MATERIAL AL+PLASTIC
- CRI ≥80
- BEAMANGLE 120°
- LIFETIME(H) ≥15000

MODEL	GPS-34	GPS-35	GPS-36	GPS-37
WATTAGE(W)	18-20	27-30	36-40	45-50
EFFICACY(LM/W)	90lm/w	90lm/w	90lm/w	90lm/w
DIMENSION(MM)	Φ80x112	Φ100x134	Φ118x154	Φ138x173
DRIVER	IC	IC	IC	IC



LED T LAMP-F

Die-Casting Aluminum

- VOLTAGE(V) 110-264
- CCT(K) 2700-7000
- BASE E27/E26
- PF ≥0.5
- MATERIAL AL+PLASTIC
- CRI ≥80
- BEAMANGLE 220°
- LIFETIME(H) ≥15000

MODEL	GPS-38	GPS-39	GPS-40	GPS-41	GPS-42
WATTAGE(W)	20	30	40/50	60/70	80
LUMINOUS(LM)	1800	2700	3600/4500	5400/6300	7200
DIMENSION(MM)	Φ80x149	Φ100x180	Φ118x209	Φ140x229	Φ150x259
DRIVER	IC	IC	IC	IC	IC



GPS-43

LED UFO LAMP-A

- VOLTAGE(V) 170-264
- CCT(K) 3000-7000
- BASE E27/E26
- PF ≥0.5
- MATERIAL PLASTIC
- CRI ≥80
- BEAMANGLE 120°
- LIFETIME(H) ≥15000

WATTAGE(W)	12	15	20	28	38	48
LUMINOUS(LM)	950/1080	1200/1350	1600/1800	2250/2500	3050/3400	3500/4300
DIMENSION(MM)	Φ120x60	Φ150x65	Φ200x65	Φ223x100	Φ290x100	Φ310x108
DRIVER	IC	IC	IC	IC	IC	IC



GPS-44

LED UFO LAMP-B

- VOLTAGE(V) 170-264
- CCT(K) 3000-6500
- BASE E27/E26
- PF ≥0.5
- MATERIAL AL+PLASTIC
- CRI ≥80
- BEAMANGLE 120°
- LIFETIME(H) ≥15000

WATTAGE(W)	30	50
LUMINOUS(LM)	2700	4500
DIMENSION(MM)	Φ130x143	Φ150x162
DRIVER	IC	IC



GPS-45

LED PAR30 LAMP

- VOLTAGE(V) 110-264/220-240
- CCT(K) 3000-6500
- BASE E27/E26
- PF 0.9/0.9
- MATERIAL PLASTIC
- CRI ≥80
- BEAMANGLE 36°/100°
- LIFETIME(H) ≥15000

WATTAGE(W)	15
LUMINOUS(LM)	1200
DIMENSION(MM)	Φ93x88
DRIVER	IC/LINEAR

LED GENERAL LAMP SERIES



LED SLIM T LAMP

- VOLTAGE(V) 170-264
- CCT(K) 2700-7000
- BASE E27
- PF ≥0.5
- MATERIAL PLASTIC
- CRI ≥80
- BEAMANGLE 220°
- LIFETIME(H) ≥15000

MODEL	GPS-46	GPS-47	GPS-48	GPS-49
WATTAGE(W)	5	9	12	14
LUMINOUS(LM)	450/425	810/765	1080/1020	1260/1190
DIMENSION(MM)	Φ30x100	Φ37x122	Φ45x138	Φ50x145
DRIVER	IC	IC	IC	IC



LED U LAMP

- VOLTAGE(V) 170-265
- CCT(K) 3000/6500
- CRI ≥80
- MATERIAL PLASTIC
- OPERATING TEMP -20°C-30°C
- PF >0.9
- IP 20
- LIFETIME(H) ≥25000

MODEL	GPS-54	GPS-55	GPS-56	GPS-57	GPS-58
WATTAGE (W)	35	35	45	45	50
LUMINOUS (LM)	3150/3500	3150/3500	4050/4500	4050/4500	4500/5000
EFFICACY(LM/W)	90/100	90/100	90/100	90/100	90/100
BASE	E26/E27	E39/E40	E39/E40	E26/E27	E39
DIMENSION(MM)	Φ74x238	Φ74x250	Φ74x280	Φ74x268	Φ88x280



LED R LAMP

- VOLTAGE(V) 170-264
- CCT(K) 2700-7000
- BASE E14/E27
- PF ≥0.5
- MATERIAL PLASTIC
- CRI ≥80
- BEAMANGLE 120°
- LIFETIME(H) ≥15000

MODEL	GPS-50	GPS-51	GPS-52	GPS-53
WATTAGE(W)	4	6	9	13
LUMINOUS(LM)	340/320	510/480	765/720	1040/1105
DIMENSION(MM)	Φ39x69	Φ50x86	Φ63x100	Φ80x115
DRIVER	IC	IC	IC	IC



GPS-59

EMERGENCY BULBS-A

- VOLTAGE(V) 230V(110-240VAC)
- CCT(K) 2700-7000
- BASE E27/E26/B22
- PF ≥0.5
- MATERIAL PLASTIC
- CRI ≥80
- IP 20
- LIFETIME(H) ≥15000

WATTAGE(W)	7	9	12	18
LUMINOUS(LM)	600	800	950	1600
DIMENSION(MM)	Φ60x123	Φ68x143	Φ78x153	Φ95x188
DRIVER	IC	IC	IC	IC



GPS-60

EMERGENCY BULBS-B

- VOLTAGE(V) 110-264
- CCT(K) 2700-7000
- CRI ≥80
- MATERIAL PLASTIC
- PF ≥0.5
- LIFETIME(H) ≥15000
- IP 20
- BASE E27/E26/B22
- BATTERY(MAH) 1200/1500

WATTAGE(W)	12	15
LUMINOUS(LM)	918	1080
DIMENSION(MM)	Φ80x167	Φ95x192
DRIVER	IC	IC



GPS-61

PLANT GROWTH LAMP

- VOLTAGE(V) 108-132
- CCT(K) 3000-LDR
- CRI ≥80
- MATERIAL PLASTIC
- PF ≥0.5
- LIFETIME(H) ≥15000
- BASE E26
- OPERATING TEMP -20-40°C

WATTAGE (W)	8.5	
PPF	6UMOL/S, 14UMOL/S	
DIMENSION (MM)	Φ95.5x132	
SPECTRAL INTENSITY RATIO	Seeding	1:0.6
	Vegetative	1:0.6
	Fruiting	1:0.4

LED GX53



7W

9W

13W

$\Phi 73 \times 26 \text{mm}$
 170-264V
 ≥ 80
 Gx53
 15000 H
 $\text{PF} \geq 0.5$
 IP 20

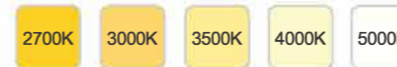
SUITABLE FOR LAMPS



COLOR



CCT



CRI



GPS-62 GPS-63 GPS-64

	GPS-62	GPS-63	GPS-64
Wattage(W)	7W	9W	13W
Luminous $\pm 10\%$	580	700	1020
Material	PLASTI/PLASTIC+AL	PLASTI/PLASTIC+AL	PLASTI/PLASTIC+AL
Dimensions	$\Phi 60 \times 108 \text{mm}$	$\Phi 73 \times 27 \text{mm}$	$\Phi 73 \times 28 \text{mm}$

LED INTELLIGENT LAMP SERIES

LED INDOOR LUMINAIRES SERIES

LED OUTDOOR LUMINAIRES SERIES

LED UV LIGHT SERIES

LED INDOOR LUMINAIRES SERIES

LED INDOOR LUMINAIRES SERIES

GPS-65



LED BATTEN LIGHT-A

VOLTAGE(V)	170-264	CCT(K)	3000-6500	OPERATING TEMP	-10-40°C	CRI	≥80	LIFETIME(H)	≥15000	IP	IP20
WATTAGE(W)	20	30	40								
PF	>0.9	>0.9	>0.9								
EFFICIENCY(LM/W)	80/90	80/90	80/90								
DIMENSION(MM)	600x76x28	900x76x28	1200x76x28								

GPS-66



LED BATTEN LIGHT-B

VOLTAGE(V)	170-264	CCT(K)	3000-6500	PF	≥0.5	CRI	≥80
LIFETIME(H)	≥15000	IP	IP20	OPERATING TEMP	-10-40°C		
WATTAGE (W)				40			
EFFICIENCY(LM/W)				90/100			
DIMENSION (MM)				1200x75x33			

GPS-67



LED BATTEN LIGHT-C

VOLTAGE(V)	220-240	CCT(K)	3000-7000	PF	≥0.5	CRI	≥80	LIFETIME(H)	≥15000	IP	IP20	OPERATING TEMP	-10-40°C
WATTAGE(W)	30	60											
EFFICIENCY(LM/W)	80/90	80/90											
DIMENSION(MM)	600x113x50	1200x113x50											

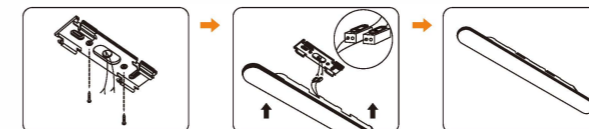
GPS-68



LINEAR LAMP

VOLTAGE(V)	170-265/220-240	CCT(K)	3000-6500	PF	≥0.5	MATERIAL	PLASTIC
CRI	≥80	BEAM ANGLE	120°	LIFETIME(H)	≥15000		
WATTAGE(W)	27	45					
LUMINOUS(LM)	2000/2400	1800/2150	3370/3800	3150/3600			
EFFICIENCY(LM/W)	75/85	70/80	75/85	70/80			
DIMENSION(MM)	600x60x52	800x60x52					

Installation method



Disassembling method



Installation requirements and maintenance

- First check the lamp parts and accessories.
- Power must be switched off before installation.
- Connect the wires from the lamp body to a dedicated drive.
- At the input of the drive, connect the matching power cord.
- Make sure the product is fastened to the surface of the object to be installed and the following operation is performed.

LED INDOOR LUMINAIRES SERIES

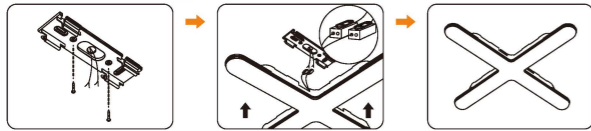
GPS-69

CROSS-LAMP

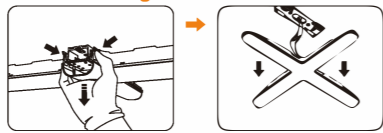
WATTAGE(W) 50W	VOLTAGE(V) 220-240	CCT(K) 3000/6500
LUMINOUS(LM) 4000	MATERIAL PLASTIC	PF ≥0.5
CRI ≥80	BEAM ANGLE 120°	DIMENSION(MM) 600x600x50.5
LIFETIME(H) ≥15000		



Installation method



Disassembling method



Installation requirements and maintenance

- First check the lamp parts and accessories.
- Power must be switched off before installation.
- Connect the wires from the lamp body to a dedicated drive.
- At the input of the drive, connect the matching power cord.
- Make sure the product is fastened to the surface of the object to be installed and the following operation is performed.

GPS-70



LED PLL LIGHT

VOLTAGE(V) 220-240	CCT(K) 6500	PF ≥0.5
CRI ≥80	MATERIAL PLASTIC	LIFETIME(H) ≥15000
WATTAGE(W)	18	24
LUMINOUS(LM)	2050	3200
DIMENSION(MM)	44x24x414	44x24x534

GPS-71



LED T5 LIGHT-A

VOLTAGE(V) 170-265	CCT(K) 3000-6500	PF ≥0.5	MATERIAL PLASTIC	
CRI ≥80	BEAM ANGLE 220°	LIFETIME(H) 25000		
WATTAGE(W)	5	10	15	20
LUMINOUS(LM)	400/450	800/900	1200/1350	1600/1800
DIMENSION(MM)	312x22x35	575x22x35	873x22x35	1174x22x35

LED INDOOR LUMINAIRES SERIES

GPS-72



LED T5 LIGHT-B

VOLTAGE(V) 170-265	CCT(K) 2700-6500	PF ≥0.5	MATERIAL PLASTIC + A16063	
CRI ≥80	BEAM ANGLE 220°	LIFETIME(H) 25000		
WATTAGE(W)	5	10	15	20
LUMINOUS(LM)	400/450	800/900	1200/1350	1600/1800
DIMENSION(MM)	312x22x35	575x22x35	873x22x35	1174x22x35

GPS-73



LED T5 LIGHT-C

VOLTAGE(V) 110-240	CCT(K) 3000/4000/6500	PF 0.9	MATERIAL PLASTIC	
CRI ≥80	BEAM ANGLE 220°	LIFETIME(H) 15000		
WATTAGE(W)	5	10	15	20
LUMINOUS(LM)	550	1100	1650	2200
DIMENSION(MM)	308x23x37	570x23x37	870x23x37	1170x23x37

GPS-74



LED T8 LIGHT

VOLTAGE(V) 110-264	CCT(K) 3000/6500	PF >0.9	MATERIAL PLASTIC	
CRI ≥80	BEAM ANGLE 360°	LIFETIME(H) ≥15000		
WATTAGE(W)	6	9	18	20
LUMINOUS(LM)	600	900	1800	2000
DIMENSION(MM)	∅28x436	∅28x590	∅28x1200	∅28x1200

GPS-75



PARKING LIGHT-A

VOLTAGE(V) 220-240	CCT(K) 3000-6500	PF >0.9	MATERIAL Aluminum + Plastic
CRI ≥80	BEAM ANGLE >120°	LIFETIME(H) ≥25000	
WATTAGE(W)	40	60	
LUMINOUS(LM)	3200/3600	4800/5400	
DIMENSION(MM)	1200x58x48	1200x58x48	

GPS-76



PARKING LIGHT-B

VOLTAGE(V) 170-265	CCT(K) 3000-6500	PF ≥0.9	MATERIAL Aluminum + Plastic		
CRI ≥80	BEAM ANGLE 120°	LIFETIME(H) 25000			
WATTAGE(W)	28	49	20	40	60
LUMINOUS(LM)	3000/4000	3000/7000	1800/2000	3000/4000	3000/6000
EFFICIENCY(LM/W)	130/143	130/143	90/100	90/100	90/100
DIMENSION(MM)	1200x51x48	1200x51x48	600x51x48	1200x51x48	1200x51x48

GPS-77

TRI-PROOF LIGHT-A

VOLTAGE(V) 170-265	CCT(K) 3000/6500	PF >0.9	MATERIAL PLASTIC	
CRI ≥80	IP 65	LIFETIME(H) ≥15000	OPERATING TEMP -20~40°C	
WATTAGE(W)	20	30	40	50
LUMINOUS(LM)	1600/1800	2400/2700	2880/3240	4400/4950
DIMENSION(MM)	600x75x63	900x75x63	1200x75x63	1500x75x63

LED INDOOR LUMINAIRES SERIES

GPS-78



TRI-PROOF LIGHT-B

Suitable for cold storage

VOLTAGE(V) 170-265 CCT(K) 3000/6500 PF >0.9 MATERIAL PLASTIC
 CRI >80 IP 65 LIFETIME(H) >15000 OPERATING TEMP -40~40°C

WATTAGE(W)	18	36	54	60
LUMINOUS(LM)	1440/1620	2880/3240	4320/4860	4800/5400
DIMENSION(MM)	600x75x63	1200x75x63	1200x75x63	1500x75x63

GPS-79



LED NEW MOISTURE PROOF LAMP

VOLTAGE(V) 110-265 CCT(K) 3000-6500 PF >0.5 MATERIAL PLASTIC CRI >80 IP 20 LIFETIME(H) >15000

WATTAGE(W)	15	20	24	30
LUMINOUS(LM)	1080/1200	1440/1600	1728/1920	2160/2400
DIMENSION(MM)	185x64	210x64	210x64	265x64

GPS-80



LED CEILING LAMP-A

VOLTAGE(V) 220-240 WATTAGE(W) 15W CCT(K) 6500/7000 LUMINOUS(LM) 1100 PF >0.5 CRI >80 MATERIAL PLASTIC BEAMANGLE 110° DIMENSION(MM) Φ237x63 LIFETIME(H) >15000

WATTAGE(W)	15
LUMINOUS(LM)	1125
DIMENSION(MM)	Φ237x63

GPS-81



LED CEILING LAMP-B

VOLTAGE(V) 220-240 CCT(K) 3000-6500 PF >0.5 CRI >80 MATERIAL PLASTIC LIFETIME(H) >15000

WATTAGE(W)	15
LUMINOUS(LM)	1100/1250
DIMENSION(MM)	Φ222x43

GPS-82



LED CEILING LAMP-C

VOLTAGE(V) 110-264 CCT(K) 3000-6500 PF >0.5 MATERIAL PLASTIC CRI >80 BEAMANGLE 110° LIFETIME(H) >25000

WATTAGE(W)	18	24	36
LUMINOUS(LM)	1260/1440	1680/1920	2520/2880
DIMENSION(MM)	Φ330x95	Φ380x110	Φ380x110

GPS-83



LED CEILING LAMP-D

VOLTAGE(V) 110-264 CCT(K) 3000-6500 PF >0.5 MATERIAL PLASTIC CRI >80 BEAMANGLE 110° LIFETIME(H) >25000

WATTAGE(W)	18	24
LUMINOUS(LM)	1260/1440	1680/1920
DIMENSION(MM)	Φ330x65	Φ380x65

LED INDOOR LUMINAIRES SERIES

GPS-84



LED CEILING LAMP-E

VOLTAGE(V) 110-264 CCT(K) 2700-7000 PF >0.5 MATERIAL PLASTIC CRI >80 BEAMANGLE 110° LIFETIME(H) >25000

WATTAGE(W)	30	36	50	60
LUMINOUS(LM)	2550	3060	4250	4800
DIMENSION(MM)	Φ400x75	Φ400x75	Φ500x75	Φ500x75

GPS-85



LED CEILING LAMP-F

VOLTAGE(V) 110-264 CCT(K) 3000/4000/6500 PF >0.5 MATERIAL PLASTIC CRI >80 IP 20 LIFETIME(H) 25000

WATTAGE(W)	18	24	36
LUMINOUS(LM)	1440	1920	2880
DIMENSION(MM)	Φ330x70	Φ380x75	Φ380x75

GPS-86



CEILING LAMP WITH MICROWAVE INDUCTION

VOLTAGE(V) 110-264 CCT(K) 3000-6500 PF >0.5 MATERIAL PLASTIC CRI >80 BEAMANGLE 110° LIFETIME(H) >15000

WATTAGE(W)	18
LUMINOUS(LM)	80
DIMENSION(MM)	Φ330x95

GPS-87



CEILING LAMP WITH DIMMABLE, INFRARED INDUCTION

VOLTAGE(V) 110-264 CCT(K) 3000-6500 PF >0.5 MATERIAL PLASTIC CRI >80 BEAMANGLE 110° LIFETIME(H) >25000

WATTAGE(W)	24	36
LUMINOUS(LM)	80	80
DIMENSION(MM)	Φ388x70	Φ485x65



GPS-88



SURFACE-MOUNTED SLIM PANEL

VOLTAGE(V) 170-264 CCT(K) 3000-6500 PF >0.5 BEAMANGLE 120° MATERIAL PLASTIC CRI >80 LIFETIME(H) >15000

WATTAGE(W)	16	21
LUMINOUS(LM)	1150/1300	1470/1700
EFFICIENCY(LM/W)	70/80	70/80
DIMENSION(MM)	Φ180x18	Φ220x18

GPS-89



PANEL LIGHT WITH ADJUSTABLE OPENING DIMENSION

WATTAGE(W)	10	18	24	36
LUMINOUS(LM)	750/800	1350/1440	1800/1920	2700/2880
OPERATING FREQUENCY	50/60	50/60	50/60	50/60
DIMENSION(MM)	Φ100x37	Φ125x37	Φ175x37	Φ230x37
HOLE SIZE	55-85	55-110	55-160	55-220

CEILING LAMP



6W

12W

18W

 $\Phi 120 \times 39 \text{mm}$
 110-264V
  ≥ 80
 15000 H
  PF ≥ 0.5
 IP 20

SUITABLE FOR LAMPS



COLOR



CCT



CRI



	GPS-90	GPS-91	GPS-92
Modle	6W	12W	18W
Operating Voltage	110-264V	110-264V	110-264V
Operating Frequency	50/60	50/60	50/60
Input Power $\pm 10\%$	6W	12W	18W
Efficacy $\pm 10\%$	80/70	80/70	80/70
Operating Temp	-10~40°	-10~40°	-10~40°
Dimensions	$\Phi 120 \times 39 \text{mm}$	$\Phi 160 \times 39 \text{mm}$	$\Phi 220 \times 39 \text{mm}$
Driver	AC	AC	AC
EMC	YES	YES	YES
Dimmable	NO	NO	NO
Lifetime	15000hrs	15000hrs	15000hrs

LED INTELLIGENT LAMP SERIES

LED INDOOR LUMINAIRES SERIES

LED OUTDOOR LUMINAIRES SERIES

LED UV LIGHT SERIES

COB DOWNLIGHT



7W

10W

20W

30W

$\Phi 88 \times 45 \text{mm}$
 220-240V
 ≥ 80
 25000 H
 PF ≥ 0.5
 IP 20

SUITABLE FOR LAMPS



COLOR



CCT



CRI



	GPS-93	GPS-94	GPS-95	GPS-96
Modle	7W	10W	20W	30W
Operating Voltage	220-240V	220-240V	220-240V	220-240V
Operating Frequency	50/60	50/60	50/60	50/60
Input Power $\pm 10\%$	7W	10W	20W	30W
Luminous $\pm 10\%$	560LM	800LM	1800LM	2700LM
Operating Temp	-20~40°	-20~40°	-20~40°	-20~40°
Dimensions	$\Phi 88 \times 45 \text{mm}$	$\Phi 125 \times 45 \text{mm}$	$\Phi 165 \times 45 \text{mm}$	$\Phi 220 \times 45 \text{mm}$
CUT OUT	75 ⁵	95 ⁵	145 ⁵	205 ⁵
Driver	IC	IC	IC	IC
EMC	YES	YES	YES	YES
Dimmable	NO	NO	NO	NO
Lifetime	25000hrs	25000hrs	25000hrs	25000hrs

LED INDOOR LUMINAIRES SERIES

GPS-97

LED PANEL LIGHT-C



- VOLTAGE(V) 170-264
- CCT(K) 3000-6500
- PF >0.9
- MATERIAL AL+PLASTIC
- CRI >80
- BEAM ANGLE 110°
- LIFETIME(H) >25000

WATTAGE(W)	42	48
LUMINOUS(LM)	85/95	85/95
DIMENSION(MM)	595x595x8	595x595x8
CUTOUT(MM)	535	535

GPS-98



LED PANEL LIGHT-D

- VOLTAGE(V) 170-264
- CCT(K) 3000-6500
- PF >0.5
- MATERIAL AL+PLASTIC
- CRI >80
- BEAM ANGLE 110°
- LIFETIME(H) >25000

WATTAGE(W)	20	36	48
LUMINOUS(LM)	1400/1600	2500/2850	3840/4320
DIMENSION(MM)	300x300x30	300x600x30	600x600x30

LED INDOOR LUMINAIRES SERIES

GPS-103

SPOTLIGHT WITH LINEAR SOLUTION



- VOLTAGE(V) 220-240
- CCT(K) 3000/4500/6500
- PF >0.9
- IP 20
- CRI >80
- BEAM ANGLE 40°
- LIFETIME(H) >15000

WATTAGE(W)	5	8
LUMINOUS(LM)	400	640
DIMENSION(MM)	Φ95x95x24	Φ95x95x24
HOLZ SIZE	78-85	78-85

GPS-104

LED DOWNLIGHT



- VOLTAGE(V) 220-240
- CCT(K) 3000-6500
- PF >0.5
- CRI >80
- MATERIAL AL+PLASTIC
- LIFETIME(H) >15000

WATTAGE(W)	8	10	12
LUMINOUS(LM)	500/560	600/620	670/700
DIMENSION(MM)	Φ110x40 ± 2	Φ110x40 ± 2	Φ110x40 ± 2

GPS-99

LED DOWNLIGHT-UGR



- VOLTAGE(V) 220-240
- CCT(K) 3000-6500
- MATERIAL PLASTIC
- PF >0.5
- CRI >80
- DIMENSION(MM) Φ100x30
- LIFETIME(H) >15000

WATTAGE(W)	5	8	12	20	25	30
LUMINOUS(LM)	300/350	520/560	840/900	1350/1500	1750/1950	2100/2300
DIMENSION(MM)	Φ100x30	Φ120x35	Φ150x35	Φ170x35	Φ198x35	Φ224x35

GPS-100

LED DOWNLIGHT-C



- VOLTAGE(V) 220-240/170-240
- CCT(K) 3000-6500
- PF >0.5
- MATERIAL PLASTIC
- CRI >80
- IP 20
- LIFETIME(H) 25000

WATTAGE(W)	8	8	12	18	18	24	30
LUMINOUS(LM)	480	720	960	1200	1800	1820	2400
OPERATING FREQUENCY	50/60	50/60	50/60	50/60	50/60	50/60	50/60
DIMENSION(MM)	Φ101x32	Φ118x32.8	Φ132x32.8	Φ151x32/Φ178x32.5	Φ178x32.8	Φ201x32.8	Φ228x32.8
HOLZ SIZE	70	85	100	129	140	170	195
PRIMER	LINEAR/DOB	LINEAR/DOB	LINEAR/DOB	LINEAR/DOB	LINEAR/DOB	LINEAR/DOB	LINEAR/DOB

LED DOWNLIGHT



- VOLTAGE(V) 220M110-264V
- CCT(K) 2700-7000
- PF 0.5/0.9
- IP 20
- CRI >80
- MATERIAL PLASTIC/PLASTIC+AL
- LIFETIME(H) >15000

MODEL	GPS-105	GPS-106	GPS-107
WATTAGE(W)	3	5	5
LUMINOUS(LM)	240	400	400
DIMENSION(MM)	Φ75x28	Φ90x32	Φ110x38
CUT OUT(MM)	Φ60	Φ75	Φ90

LED MIRROR LIGHT



VOLTAGE(V)	220-240	CCT(K)	2700-7000	OPERATING TEMP	-20~40°C	CCT:	2700K, 3000K, 4000K, 5000K, 6000K, 7000K
CRI	>80	LIFETIME(H)	>25000	PF	>0.5	DIMENSION(MM)	600
MODEL	GPS-108	GPS-109	GPS-110	GPS-111			
WATTAGE (W)	25 ± 10%	25 ± 10%	25 ± 10%	25 ± 10%			
EFFICIENCY(LM/W)	> 80	> 80	> 80	> 80			

GPS-101

COB SPOTLIGHT



- VOLTAGE(V) 110-264
- CCT(K) 2700-6500
- PF >0.5
- MATERIAL PLASTIC
- CRI >80
- BEAM ANGLE 24°/38°
- LIFETIME(H) >25000

WATTAGE(W)	5	7
LUMINOUS(LM)	375/400	525/560
DIMENSION(MM)	Φ92x72	Φ92x72

GPS-102

LED SPOT LIGHT



- VOLTAGE(V) 110-264
- CCT(K) 3000-6500
- PF >0.9
- MATERIAL PLASTIC
- CRI >80
- BEAM ANGLE 45°/55°
- LIFETIME(H) >25000

WATTAGE(W)	5	7	9	12
LUMINOUS(LM)	375/400	525/560	675/720	900/960
DIMENSION(MM)	95x95x48	95x95x48	117x117x52	140x140x55
CUTOUT(MM)	70-75	70-75	90-95	115-120

LED OUTDOOR LUMINAIRES SERIES

LED OUTDOOR LUMINAIRES SERIES



WATTAGE(W)	CCT(K)	CRI	LUMINOUS(LM)	BEAM ANGLE	IP	LIFETIME(H)
10	3000-6500	≥ 70	800	140° x70°	65	25000-50000
20			1600			
30			2400			
40			3200			
50			3600			
60			4800			

SOLAR LED STREET LIGHT SOLUTION-G

Description		Type: GPS-112	Type: GPS-113
Photovoltaic Panel	Voltage	18V/60W-Monocrystalline silicon	18V/80W-Monocrystalline silicon
	Life	20 Years	
Lithium Battery	Battery Capacity (AH)	12V 32AH 3.5KG	12V 42AH 4.0KG
	Life	3-5 Years	
The consecutive lamp working days when the battery fully charged under the condition of rainy days		3 to 5 consecutive rainy days	
LED Parameters	Power	12V 30W	12V 60W
	Luminous flux	3600-3900lm	7200-7800lm
	Life	50000H	
Installation height		7-8M	
Housing		Die Casting Aluminum	
Size and Weight	Lamp Size	384x188x55mm	432x220x70.5mm
	Lamp Weight	1.3kg	1.7kg
	Pv Panel Size	670x530x35mm	760x670x35mm
	Pv Panel Weight	3.7kg	5.5kg



SMART LED STREET LIGHT SYSTEM



50W

100W

150W

200W

250W

 $\Phi 386.5 \times 301 \times 92 \text{mm}$
 100-277V
  ≥ 80
 50000 H
  $\text{PF} \geq 0.95$
 IP 66

COLOR



CCT



CRI



	GPS-114	GPS-115	GPS-116	GPS-117	GPS-118
Model	50W	100W	150W	200W	250W
Operating Voltage	100-277V	100-277V	100-277V	100-277V	100-277V
Operating Frequency	50/60	50/60	50/60	50/60	50/60
Input Power $\pm 10\%$	50W	100W	150W	200W	250W
Luminous $\pm 10\%$	5500LM	11000LM	16500LM	22000LM	27500LM
Efficacy $\pm 10\%$	110lm/w	110lm/w	110lm/w	110lm/w	110lm/w
Operating Temp	-20~40°	-20~40°	-20~40°	-20~40°	-20~40°
Dimensions	$\Phi 386.5 \times 301 \text{mm}$	$\Phi 465.5 \times 301 \text{mm}$	$\Phi 546.5 \times 301 \text{mm}$	$\Phi 626.5 \times 301 \text{mm}$	$\Phi 706.5 \times 301 \text{mm}$
Weight(KG)	4.1	5	5.9	6.8	7.7
Material	AL+PC	AL+PC	AL+PC	AL+PC	AL+PC
Surging(V)	10KV	10KV	10KV	10KV	10KV
Quality assurance	5	5	5	5	5
Lifetime	50000hrs	50000hrs	50000hrs	50000hrs	50000hrs



OUTDOOR LIGHTING



30W



60W

$\Phi 434 \times 224 \times 97 \text{mm}$
 100-277V
 ≥ 80
 50000 H
 PF ≥ 0.95
 IP 66

▶ COLOR

Daylight Warm

▶ CCT

2700K 3000K 3500K 4000K 5000K

▶ CRI

Ra80+ Ra90+ Ra95+

	GPS-119	GPS-120
Modle	30W	60W
Operating Voltage	100-277V	100-277V
Operating Frequency	50/60	50/60
Input Power $\pm 10\%$	30W	60W
Luminous $\pm 10\%$	4500LM	9000LM
Efficacy $\pm 10\%$	150lm/w	150lm/w
Operating Temp	-20~40°	-20~40°
Dimensions	$\Phi 434 \times 224 \times 97 \text{mm}$	$\Phi 524 \times 224 \times 97 \text{mm}$
Material	AL+PC	AL+PC
Surging(V)	10KV	10KV
Quality assurance	5	5
Lifetime	50000hrs	50000hrs

LED OUTDOOR LUMINAIRES SERIES

GPS-121



STREET LIGHT

VOLTAGE(V) 100-277 CCT(K) 3000-6500 MATERIAL AL+PLASTIC PF >0.95 CRI >70 IP 65 LIFETIME(H) 50000

WATTAGE(W)	30	60	80	100
LUMINOUS(LM)	≥3600	≥7200	≥9600	≥12000
DIMENS ION(MM)	367x171x50	433x171x50	532x283x90	532x283x90
DIAMETER	Φ40±5mm	Φ60±5mm	Φ60±5mm	Φ60±5mm

GPS-122



INTEGRATED SOLAR STREET LAMP

VOLTAGE(V) 12 CCT(K) 3000-6500 BEAMANGLE 140°x0° CRI >70 IP 65

WATTAGE(W)	30	50	80	100	150
LUMINOUS(LM)	2400	3600	4800	6000	8400
DIMENS ION(MM)	146x305x135	141x305x135	1218x371x150	1396x371x150	1398x371x150

FLOOD LIGHT



Model	GPS-123	GPS-124	GPS-125	GPS-126
Rated power	3W/3.2V	5W/3.2V	9W/3.2V	2W/3.2V
Lamp bead power	30W (60*0.5/LED)	40W (80*0.5/LED)	70W (140*0.5/LED)	96W (192*0.5/LED)
Luminous flux	360lm	600lm	1080lm	1440lm
Color temperature	3000K 4000K 5000K 5700K 6500K			
Luminous angle	90°			
Color rendering index	80			
Lamp size	L195*W155*H50mm	L235*W195*H55mm	L265*W225*H65mm	L315*W265*H70mm
Battery Specification	3.2V 5.5AH	3.2V 11AH	3.2V 16.5AH	3.2V 22AH
Battery charging time	5-7H			
Working temperature	Charge: 0~60°C Discharge: -10~60°C -20~25 °C (< 1yeas) ,-20~40 °C (< 3 months)			
Storage temperature	10W/6V	12W/6V	18W/6V	25W/6V
Photovoltaic panel power	1.67A	2A	3A	4.16A
Charging current	L350*W235*H17mm	L350*W290*H17mm	L350*W430*H17mm	L350*W530*H17mm
Lighting duration of lamps	Automatic sensitization ≤16h	100% ≤5h	50% ≤11h	15% ≤37h
Remote control mode	Infra-red			
Life	25000H			
Waterproof grade	IP65			

LED OUTDOOR LUMINAIRES SERIES

GPS-127

TUNNEL LIGHT



VOLTAGE(V) 100-277 CCT(K) 3000-6500 MATERIAL AL+PLASTIC PF >0.95 CRI >70 IP 65 LIFETIME(H) ≥50000

WATTAGE(W)	50	100	150	200	250
LUMINOUS(LM)	6000	12000	18000	24000	30000
DIMENSION(MM)	220x301x254	274x301x254	354x301x254	434x301x254	514x301x254

GPS-128

TUNNEL LIGHT



VOLTAGE(V) 100-277 CCT(K) 3000-6500 MATERIAL AL PF >0.95 CRI >70 IP 65 LIFETIME(H) ≥50000

WATTAGE(W)	50	100	150	200	250
LUMINOUS(LM)	5500	11000	16500	22000	30000
DIMENS ION(MM)	105x337x231	1 53x337x231	232x337x231	311x337x231	391x337x231

GPS-129

FLOOD LIGHT



VOLTAGE(V) 220-240 CCT(K) 2700-7000 MATERIAL AL+GLASS PF >0.9 CRI >70 IP 65 LIFETIME(H) ≥25000

WATTAGE(W)	30	50	70
LUMINOUS(LM)	2700	4500	6300
DIMENSION(MM)	1 46x142x31	218x153x31	245x192x31

GPS-130

FLOOD LIGHT



VOLTAGE(V) 220-240 CCT(K) 3000-6500 MATERIAL AL+GLASS PF >0.9 CRI >80 IP 65 LIFETIME(H) ≥25000

WATTAGE(W)	10	20	30	50	100	1 502 00	300
LUMINOUS(LM)	800	1600	2700	4500	9000	13500/18000	27000
DIMENSION(MM)	103x83x24	180x122x26	180x122x26	206x180x33.5	270x210x33.5	350x280x40	445x335x45

GPS-131

FLOOD LIGHT



VOLTAGE(V) 220-240 CCT(K) 3000-6500 MATERIAL AL+GLASS PF >0.95 CRI >80 IP 65 LIFETIME(H) ≥25000

WATTAGE(W)	10	20	30	50	70	100
LUMINOUS(LM)	800	1600	2700	4500	6300	9000
DIMENSION(MM)	102x71X16	146x142X31	218x153X31	245x192X31	245x172X32	305x205X37

GPS-132

FLOOD LIGHT



VOLTAGE(V) 220-240 CCT(K) 3 000-6500 MATERIAL AL+GLASS PF >0.9 CRI >80 IP 65 LIFETIME(H) ≥25000

WATTAGE(W)	10	20	30	50	70	100	150	200
LUMINOUS(LM)	900	1800	1800	4500	6300	9000	13500	18000
DIMENS ION(MM)	85x90x25	95x75x25	125x119x27	170x145x28	210x173x34	250x221x35	280x262x36	300x311x36

HIGHBAY UFO



60W 75W 115W 150W 190W

$\Phi 235 \times 176 \text{mm}$
 170-240V
 $\geq 80^\circ$
 25000 H
 PF ≥ 0.9
 IP 65

COLOR

Daylight **Warm**

CCT

2700K 3000K 3500K 4000K 5000K

CRI

Ra80+ Ra90+ Ra95+



GPS-133 GPS-134 GPS-135 GPS-136 GPS-137

Modle	60W	75W	115W	150W	190W
Operating Voltage	170-240V	170-240V	170-240V	170-240V	170-240V
Operating Frequency	50/60	50/60	50/60	50/60	50/60
Input Power	60W	75W	115W	150W	190W
LM -10%	8000	10000	15000	20000	25000
Operating Temp	-20~40°	-20~40°	-20~40°	-20~40°	-20~40°
Dimensions	$\Phi 235 \times 176 \text{mm}$	$\Phi 235 \times 176 \text{mm}$	$\Phi 235 \times 176 \text{mm}$	$\Phi 283 \times 200 \text{mm}$	$\Phi 353 \times 234 \text{mm}$
Surge	2KV	2KV	2KV	2KV	2KV
EMC	YES	YES	YES	YES	YES
Dimmable	NO	NO	NO	NO	NO
Lifetime	25000hrs	25000hrs	25000hrs	25000hrs	25000hrs



LED OUTDOOR LUMINAIRES SERIES

GPS-138
FLOOD LIGHT



- VOLTAGE(V) 110-265
- CCT(K) 3000-6500
- PF ≥0.5
- MATERIAL AL+GLASS
- CRI ≥80
- IP 65
- LIFETIME(H) ≥25000

WATTAGE(W)	10	20	30	50	70	100	200	300	400
LUMINOUS(LM)	800	1600	2400	4000	5600	8000	16000	27000	36000
DIMENSION(MM)	118x126x40	180x184x36	227x221x50	274x285x50	290x377x70	290x377x70	325x425x75	443x400x80	488x485x90

GPS-139
HIGHBAY UFO



- VOLTAGE(V) 100-277
- CCT(K) 3000-6500
- PF ≥0.95
- MATERIAL AL+PLASTIC
- CRI ≥70
- IP 65
- LIFETIME(H) ≥60000

WATTAGE(W)	60	100	150	200	300
LUMINOUS(LM)	7200	12000	18000	24000	36000
DIMENSION(MM)	Φ235x120	Φ280x185	Φ340x187	Φ400x196	Φ460x260

GPS-140
HIGHBAY



- VOLTAGE(V) 100-265
- CCT(K) 3000-6500
- MATERIAL AL+PLASTIC
- PF ≥0.9
- CRI ≥70
- IP 20
- LIFETIME(H) ≥25000

WATTAGE(W)	50	100	150
LUMINOUS(LM)	5500	11000	16500
DIMENSION(MM)	Φ284x216	Φ397x283	Φ450x351

GPS-141
HIGHBAY



- VOLTAGE(V) 220-240
- CCT(K) 3000-6500
- MATERIAL AL+GLASS
- PF ≥0.9
- CRI ≥80
- IP 66
- LIFETIME(H) ≥25000

WATTAGE(W)	100	150	200
LUMINOUS(LM)	10000	15000	20000
DIMENSION(MM)	Φ235x167	Φ283x167	Φ353x167

GPS-142
WALL WASHLIGHT



- VOLTAGE(V) DC24
- MATERIAL AL+PLASTIC
- OPERATING TEMP -40°C~+40°C
- CRI ≥80
- LIFETIME(H) ≥50000
- IP 66

WATTAGE (W)	BEAM ANGLE	CCT (K)	DIMENSION (MM)
12	15° /25° /45° /10x85°	2200-4000	1000x30x23
18	15° /25° /45° /10x85°	2200-4000	1000x30x23
24	15° /25° /45° /10x85°	2200-4000	1000x30x23



FLOOD LIGHT



30W

50W

70W

100W

 $\Phi 170 \times 303 \text{mm}$
 220-240V
  ≥ 80
 25000 H
  PF ≥ 0.9
 IP 65

COLOR

Daylight
 Warm

CCT

2700K
 3000K
 3500K
 4000K
 5000K

CRI

Ra80+
 Ra90+
 Ra95+



	GPS-143	GPS-144	GPS-145	GPS-146
Modle	30W	50W	70W	100W
Operating Voltage	220-240V	220-240V	220-240V	220-240V
Operating Frequency	60Hz	60Hz	60Hz	60Hz
Input Power	30W	50W	70W	100W
LM -10%	2700	4500	6300	9000
Operating Temp	-20~40°	-20~40°	-20~40°	-20~40°
Dimensions	/	/	/	/
Driver	IC	IC	IC	IC
EMC	YES	YES	YES	YES
Dimmable	NO	NO	NO	NO
Lifetime	25000hrs	25000hrs	25000hrs	25000hrs

LED UV LIGHT SERIES



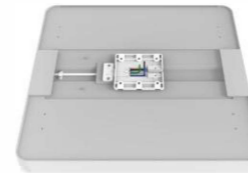
LED UV LIGHT SERIES

GPS-147

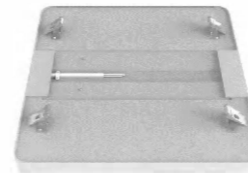
INTELLIGENT INTEGRATED LIGHTING
UV STERILIZING LUMINAIRE



Surface installation



Build-in installation



SPECIFICATION	LED LIGHTING LAMP	UV STERILIZATION LAMP		
Power	24W	48W		
Voltage	220V			
Frequency	50/60Hz			
PF	≥0.5			
Function	Human body infrared induction+Timing control			
UV illumination				2.8W/M ² (@1M)
Sterilized lamp tube material				Quartz UV lamp tube
Size	380x380x42mm			
Life	25000h	8000h		
Standard	IEC60335/GB7000-2015、GB19258-2012			
Areas of application	Kitchen, balcony, toilet, dining room, bedroom, living room	Kitchen, balcony, toilet (area about 10m ²)	Dining room and bedroom (area about 20m ²)	Living room, large bedroom (area about 40m ²)
Recommended sterilization time (uv lamp working mode)		15 minutes	30 minutes	60 minutes

GPS-148

PORTABLE UV STERILIZING LUMINAIRE

SPECIFICATION	UV LAMP		
Power	40W		
Voltage	220V		
Frequency	50/60Hz		
PF	≥0.5		
Function	3 level timing control		
Sterilized lamp tube material	Quartz UV lamp tube		
Bracket material	Metal lamp bracket+high temperature paint treatment		
Size	Φ190x453mm		
Life	8000h		
Standard	IEC60335/GB19258-2012		
Areas of application	Kitchen, balcony, toilet (area about 10m ²)	Dining room and bedroom (area about 20m ²)	Living room, large bedroom (area about 40m ²)
Recommended sterilization time	15 minutes	30 minutes	60 minutes

